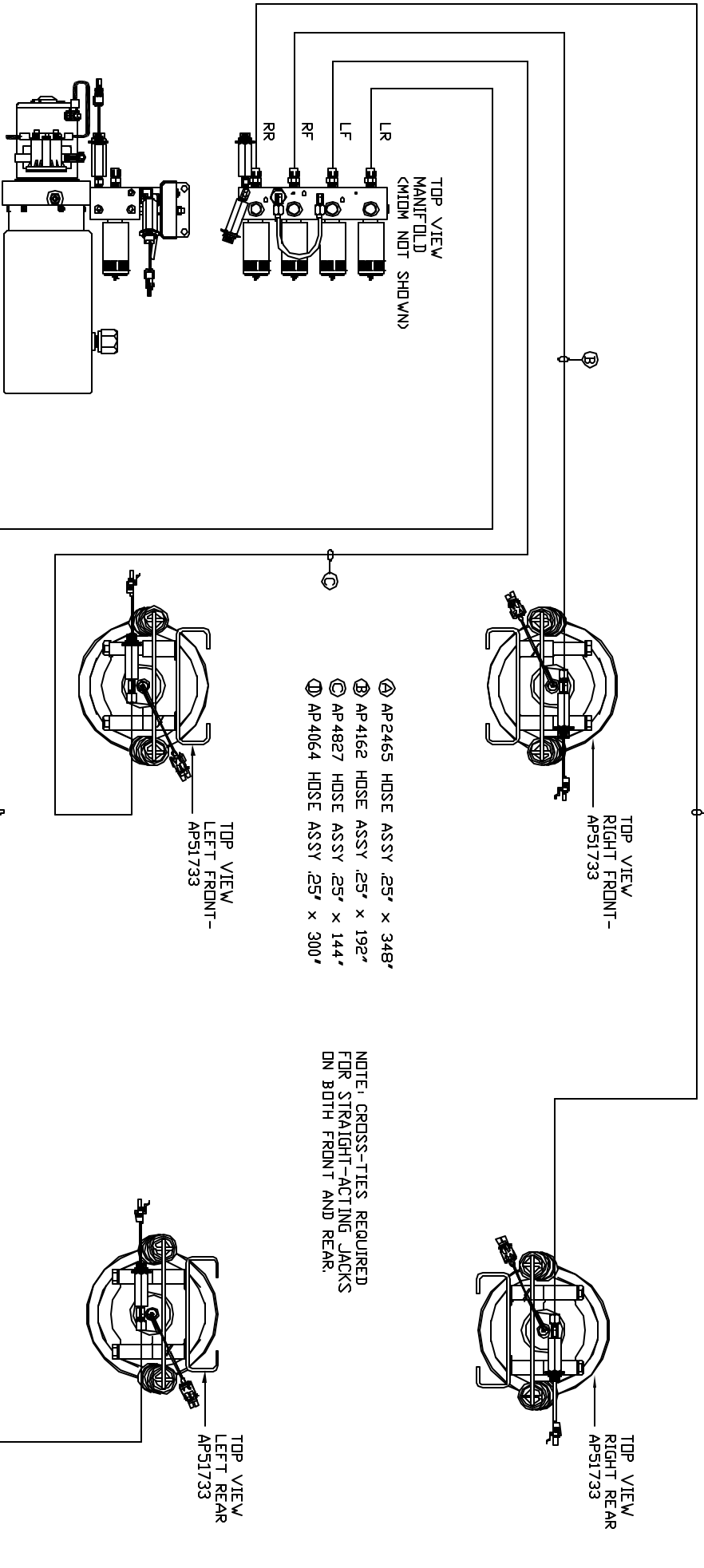


ORIENTATION
FRONT



TOP VIEW
MANIFOLD
(MIDM NOT SHOWN)

SIDE VIEW PUMP/MANIFOLD-AP47451
LOCATION AND ORIENTATION OF
PUMP/MANIFOLD ASSEMBLY WILL
DIFFER DEPENDING UPON OEM.

- Ⓐ AP2465 HOSE ASSY .25" x 348"
- Ⓑ AP 4162 HOSE ASSY .25" x 192"
- Ⓒ AP 4827 HOSE ASSY .25" x 144"
- Ⓓ AP 4064 HOSE ASSY .25" x 300"

NOTE: CROSS-TIES REQUIRED
FOR STRAIGHT-ACTING JACKS
ON BOTH FRONT AND REAR.

NOTE: INSTALLATION MUST CONFORM TO GOOD SHOP PRACTICES, SAE STANDARDS, RYLA STANDARDS, AND OTHER APPLICABLE STANDARDS.

LEVELING SYSTEM: APS1744

NO.	DATE	REVISION

THE INFORMATION DISCLOSED IN THIS DRAWING IS CONFIDENTIAL AND MUST NOT BE DISCLOSED OR USED IN ANY MANNER WHICH WILL BE DETRIMENTAL TO THE IHH CORPORATION

HWH 1-80 EXT 267 SOUTH
RT 1 MOSCOV, IOWA 52760

SCALE 1:6 DATE 09DEC13 DRAWN BY .

HYD CONN DIAGRAM

CONSTRUCCION

DRAWING NUMBER MP70726