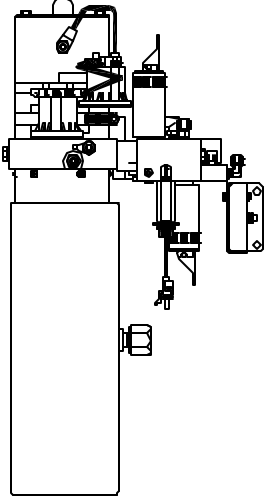
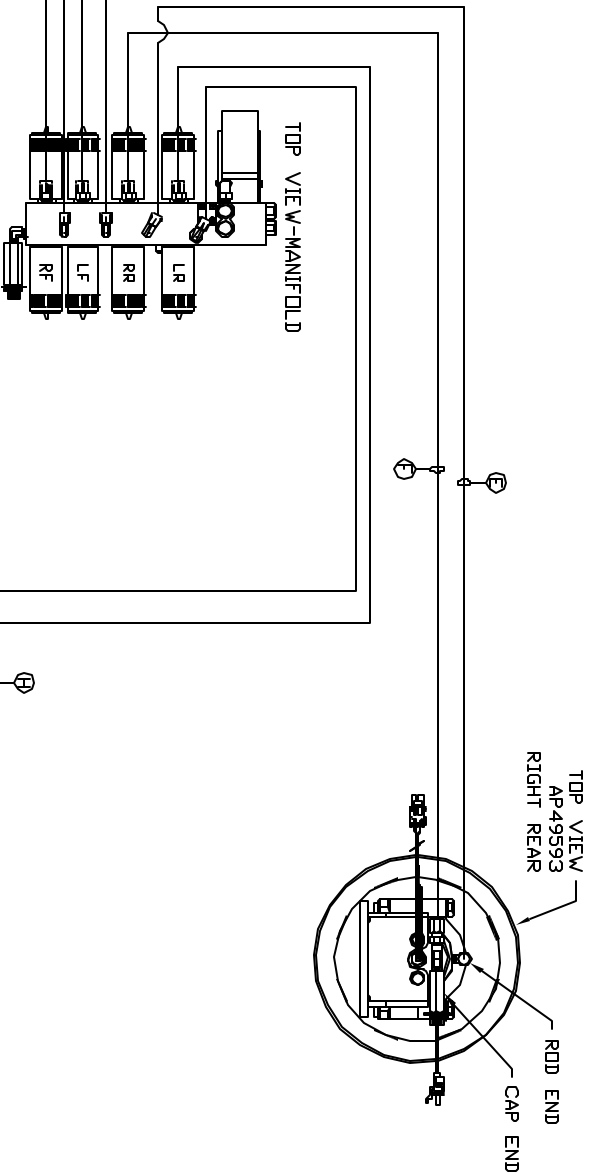
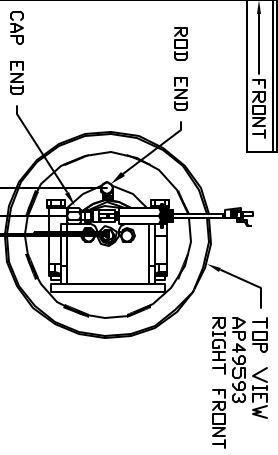
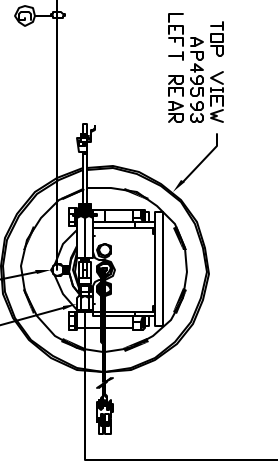
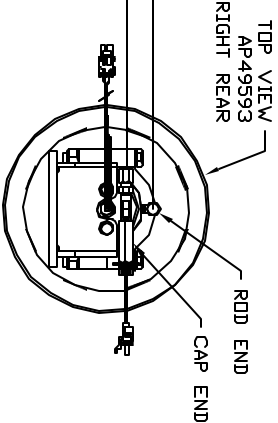


ORIENTATION  
FRONT



SIDE VIEW PUMP/MANIFOLD-APS3207  
LOCATION AND ORIENTATION OF  
PUMP/MANIFOLD ASSEMBLY WILL  
DIFFER DEPENDING UPON DEM.

- Ⓐ AP4061 HOSE ASSY .25" x 216" - RF ROD END
- Ⓑ AP46310 HOSE ASSY .25"/05 x 192" - RF CAP END
- Ⓒ AP4074 HOSE ASSY .25" x 108" - LF ROD END
- Ⓓ AP45250 HOSE ASSY .25/05 x 96" - LF CAP END
- Ⓔ AP4391 HOSE ASSY .25" x 372" - RR ROD END
- Ⓕ AP49598 HOSE ASSY .25/05 x 342" - RR CAP END
- Ⓖ AP7131 HOSE ASSY .25" x 496" - LR ROD END
- Ⓗ AP47474 HOSE ASSY .25/05 x 480" - LR CAP END



NOTE: INSTALLATION MUST CONFORM TO GOOD SHIP PRACTICES, SAE STANDARDS, RVIA STANDARDS, AND OTHER APPLICABLE STANDARDS.

LEVELING SYSTEM: APS3185

NO.	DATE	REVISION

THE INFORMATION DISCLOSED IN THIS DRAWING IS CONFIDENTIAL AND MUST NOT BE DISCLOSED OR USED IN ANY MANNER WHICH WILL BE DETRIMENTAL TO THE IHH CORPORATION

HWH 1-80 EXT 267 SOUTH  
RT 1 MOSCOW, IOWA 52760

SCALE 1:6 DATE 26FEB14 DRAWN BY .

HYD CONN DIAGRAM

SCENIC ROUTE

DRAWING NUMBER MP70754