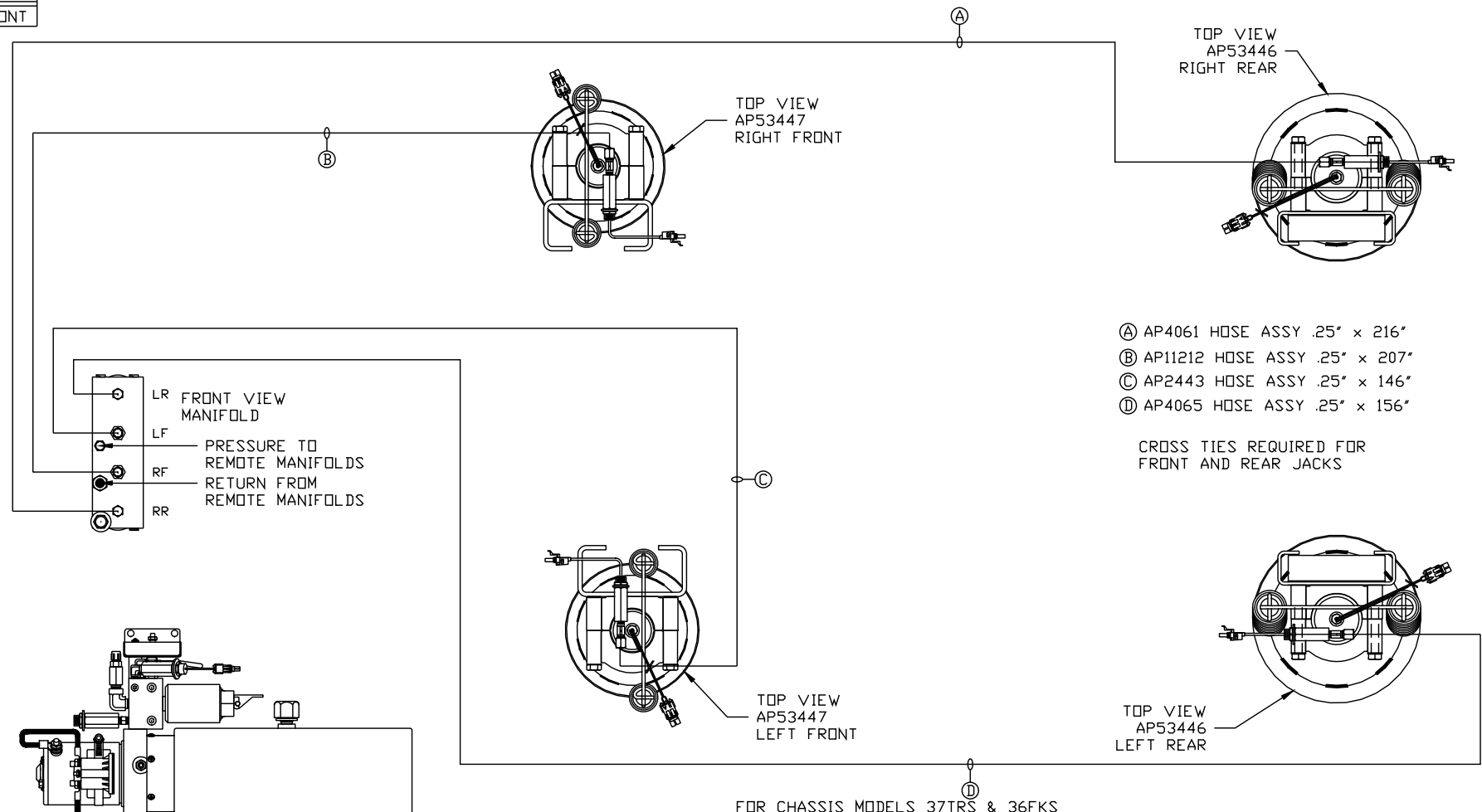


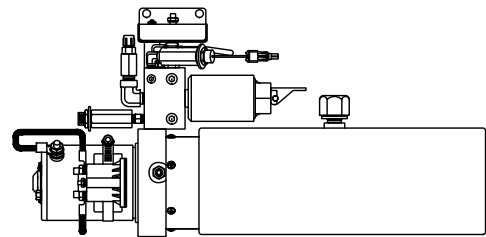
ORIENTATION  
 ← FRONT



- Ⓐ AP4061 HOSE ASSY .25" x 216"
- Ⓑ AP11212 HOSE ASSY .25" x 207"
- Ⓒ AP2443 HOSE ASSY .25" x 146"
- Ⓓ AP4065 HOSE ASSY .25" x 156"

CROSS TIES REQUIRED FOR FRONT AND REAR JACKS

LR FRONT VIEW MANIFOLD  
 LF PRESSURE TO REMOTE MANIFOLDS  
 RF RETURN FROM REMOTE MANIFOLDS  
 RR



SIDE VIEW PUMP/MANIFOLD-AP53497

LOCATION AND ORIENTATION OF PUMP/MANIFOLD ASSEMBLY WILL DIFFER DEPENDING UPON O.E.M.

FOR CHASSIS MODELS 37TRS & 36FKS

NOTE: INSTALLATION MUST CONFORM TO GOOD SHOP PRACTICES, SAE STANDARDS, RVIA STANDARDS, AND OTHER APPLICABLE STANDARDS.

LEVELING SYSTEM: AP53712

△	22FEB16	UPDATED HOSES
△	18JUN14	CHG'D HOSE CONN, FITTING
NO.	DATE	REVISION

THE INFORMATION DISCLOSED ON THIS DRAWING IS CONFIDENTIAL AND MUST NOT BE DISCLOSED OR USED IN ANY MANNER WHICH WILL BE DETRIMENTAL TO THE HWH CORPORATION

<b>HWH</b>		I-80 EXIT 267 SOUTH RT 1 MOSCOW, IOWA 52760	
SCALE 1:6	DATE 07MAY14	DRAWN BY .	
<b>HYD CONN DIAGRAM</b>			
<b>DYNAMAX</b>		DRAWING NUMBER MP70779 A/C	

ORIENTATION

← FRONT

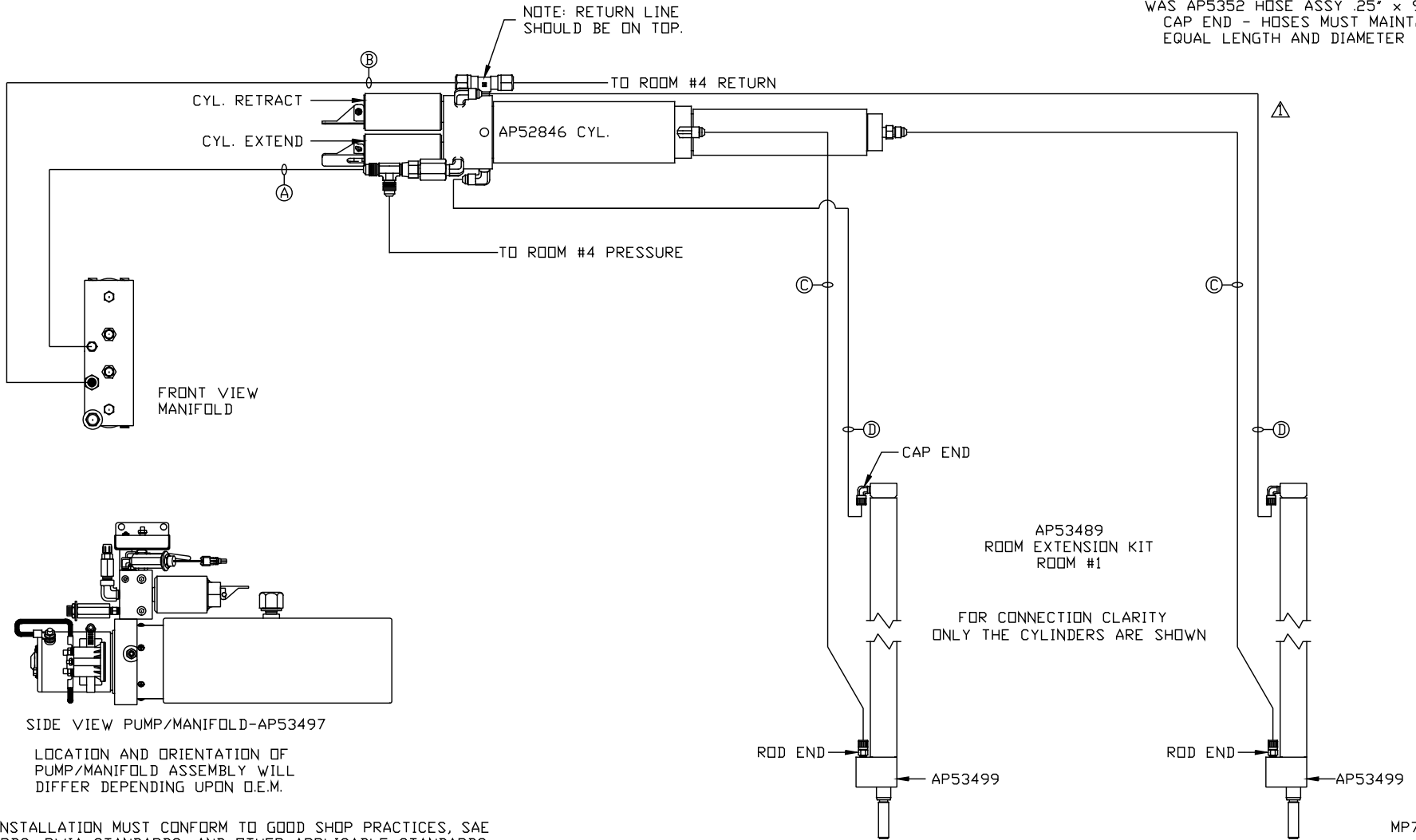
Ⓐ AP50766 HOSE ASSY 03F x 96" PRESSURE

Ⓑ P5254 TUBING .375" x .96" RETURN

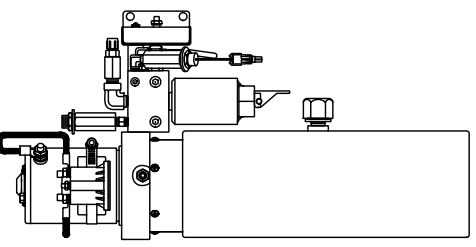
Ⓒ AP50766 HOSE ASSY 03F x 96" ROD END - ALWAYS PRESSURIZED HOSES MUST MAINTAIN EQUAL LENGTH AND DIAMETER

Ⓓ AP4062 HOSE ASSY .25" x 132" WAS AP5352 HOSE ASSY .25" x 96" CAP END - HOSES MUST MAINTAIN EQUAL LENGTH AND DIAMETER

NOTE: RETURN LINE SHOULD BE ON TOP.



FRONT VIEW MANIFOLD



SIDE VIEW PUMP/MANIFOLD-AP53497

LOCATION AND ORIENTATION OF PUMP/MANIFOLD ASSEMBLY WILL DIFFER DEPENDING UPON O.E.M.

NOTE: INSTALLATION MUST CONFORM TO GOOD SHOP PRACTICES, SAE STANDARDS, RVIA STANDARDS, AND OTHER APPLICABLE STANDARDS.

MP70779 B/C  
22FEB16

ORIENTATION

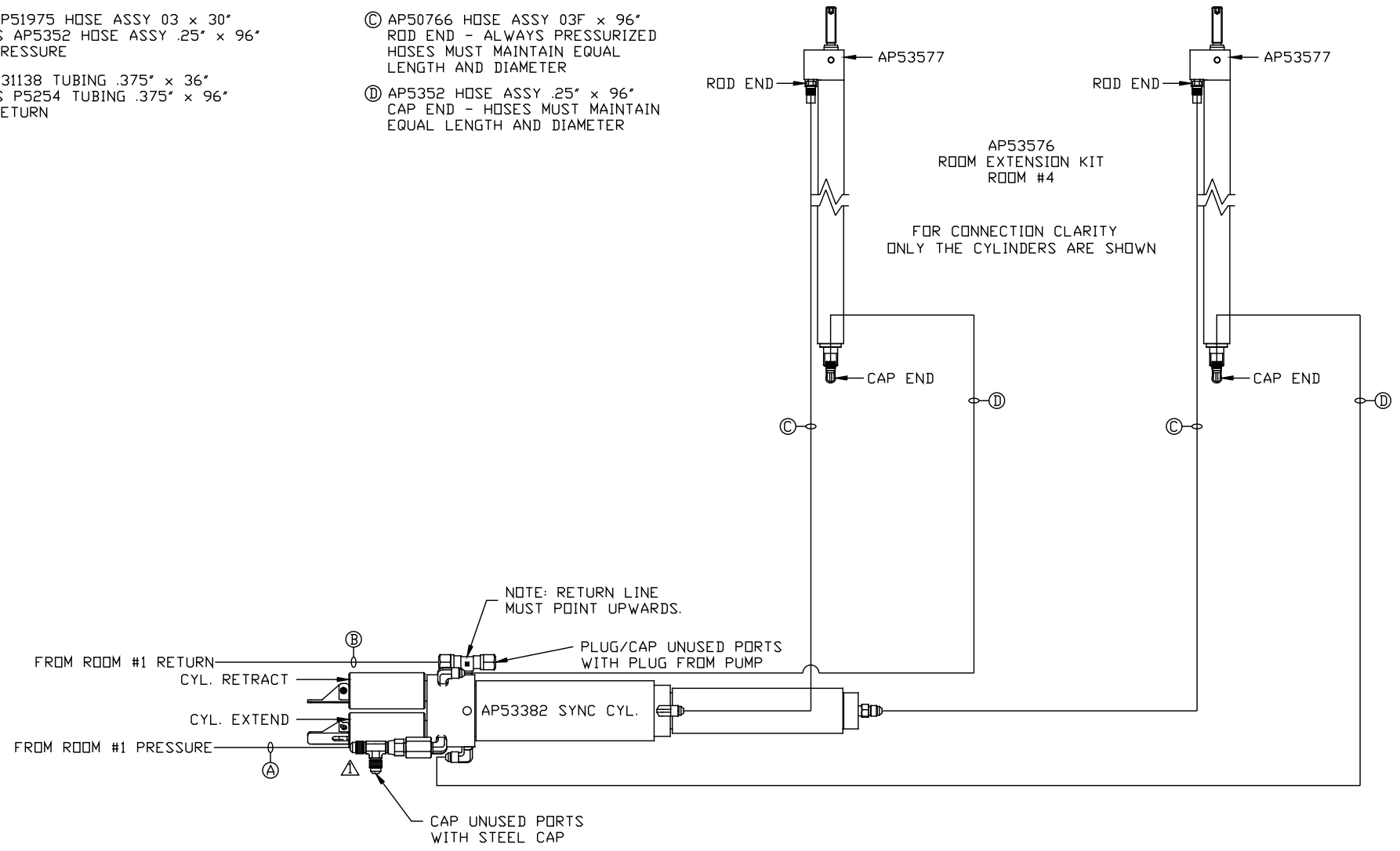
← FRONT

⚠ (A) AP51975 HOSE ASSY 03" x 30"  
WAS AP5352 HOSE ASSY .25" x 96"  
PRESSURE

⚠ (B) P31138 TUBING .375" x 36"  
WAS P5254 TUBING .375" x 96"  
RETURN

Ⓢ (C) AP50766 HOSE ASSY 03F" x 96"  
ROD END - ALWAYS PRESSURIZED  
HOSES MUST MAINTAIN EQUAL  
LENGTH AND DIAMETER

Ⓢ (D) AP5352 HOSE ASSY .25" x 96"  
CAP END - HOSES MUST MAINTAIN  
EQUAL LENGTH AND DIAMETER



NOTE: INSTALLATION MUST CONFORM TO GOOD SHOP PRACTICES, SAE STANDARDS, RVIA STANDARDS, AND OTHER APPLICABLE STANDARDS.

MP70779 C/C  
22FEB16