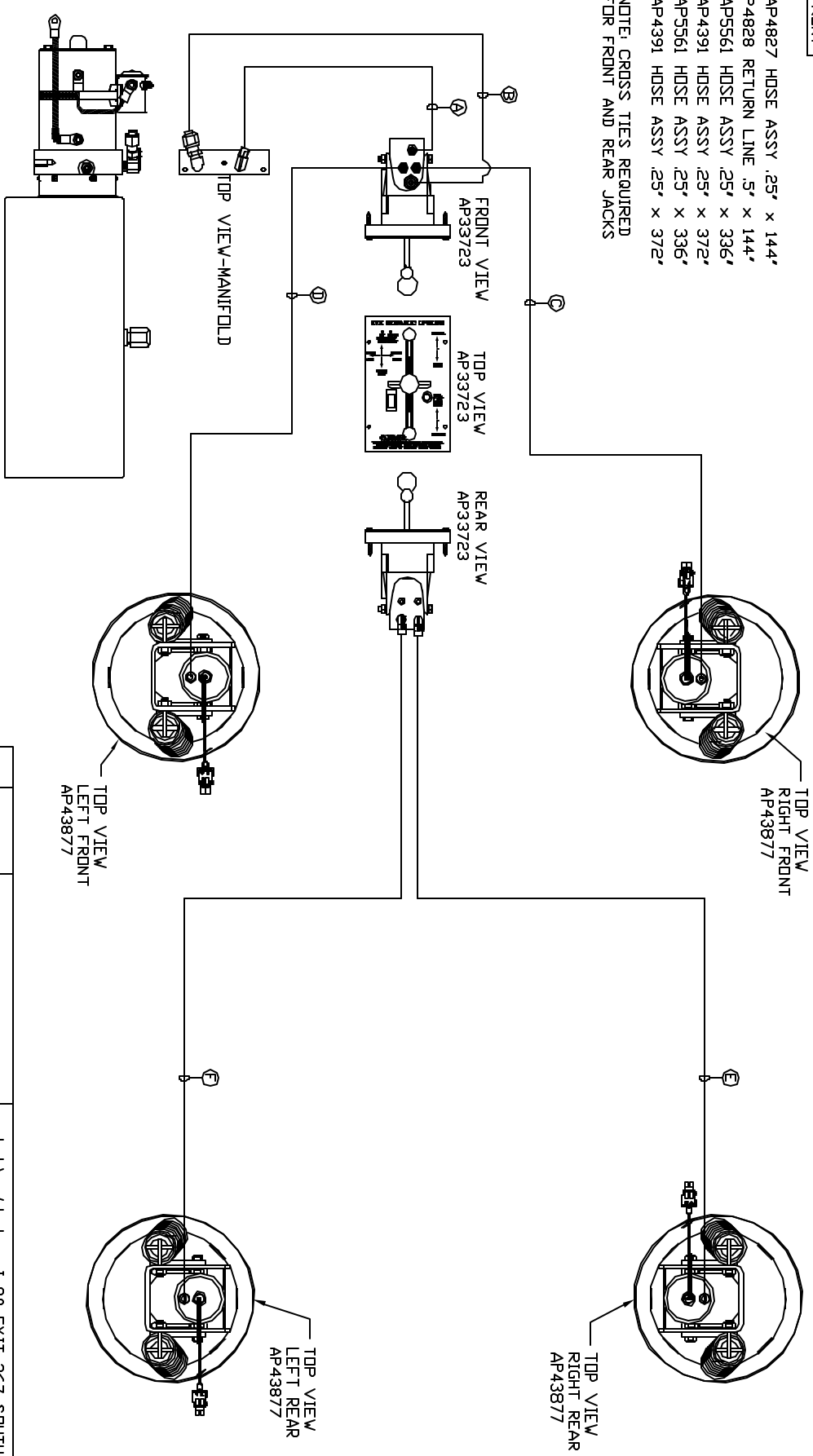


ORIENTATION

FRONT

- Ⓐ AP4827 HOSE ASSY .25' x 144'
- Ⓑ P4828 RETURN LINE .5' x 144'
- Ⓒ AP5561 HOSE ASSY .25' x 336'
- Ⓓ AP4391 HOSE ASSY .25' x 372'
- Ⓔ AP5561 HOSE ASSY .25' x 336'
- Ⓕ AP4391 HOSE ASSY .25' x 372'

NOTE: CROSS TIES REQUIRED FOR FRONT AND REAR JACKS



LOCATION AND ORIENTATION OF PUMP/MANIFOLD ASSEMBLY WILL DIFFER DEPENDING UPON OEM.

NOTE: INSTALLATION MUST CONFORM TO GOOD SHOP PRACTICES, SAE STANDARDS, RYLA STANDARDS, AND OTHER APPLICABLE STANDARDS.

LEVELING SYSTEM: AP93415

NO.	DATE	REVISION

HWH 1-80 EXT 267 SOUTH
 RT 1 MOSCOV, IOWA 52760
 DRAWN BY:

SCALE 1:6 DATE 19MAY14
HYD CONN DIAGRAM

LDS SYSTEMS DRAWING NUMBER MP70781

THE INFORMATION DISCLOSED IN THIS DRAWING IS CONFIDENTIAL AND MUST NOT BE DISCLOSED OR USED IN ANY MANNER WHICH WILL BE DETRIMENTAL TO THE INH CORPORATION