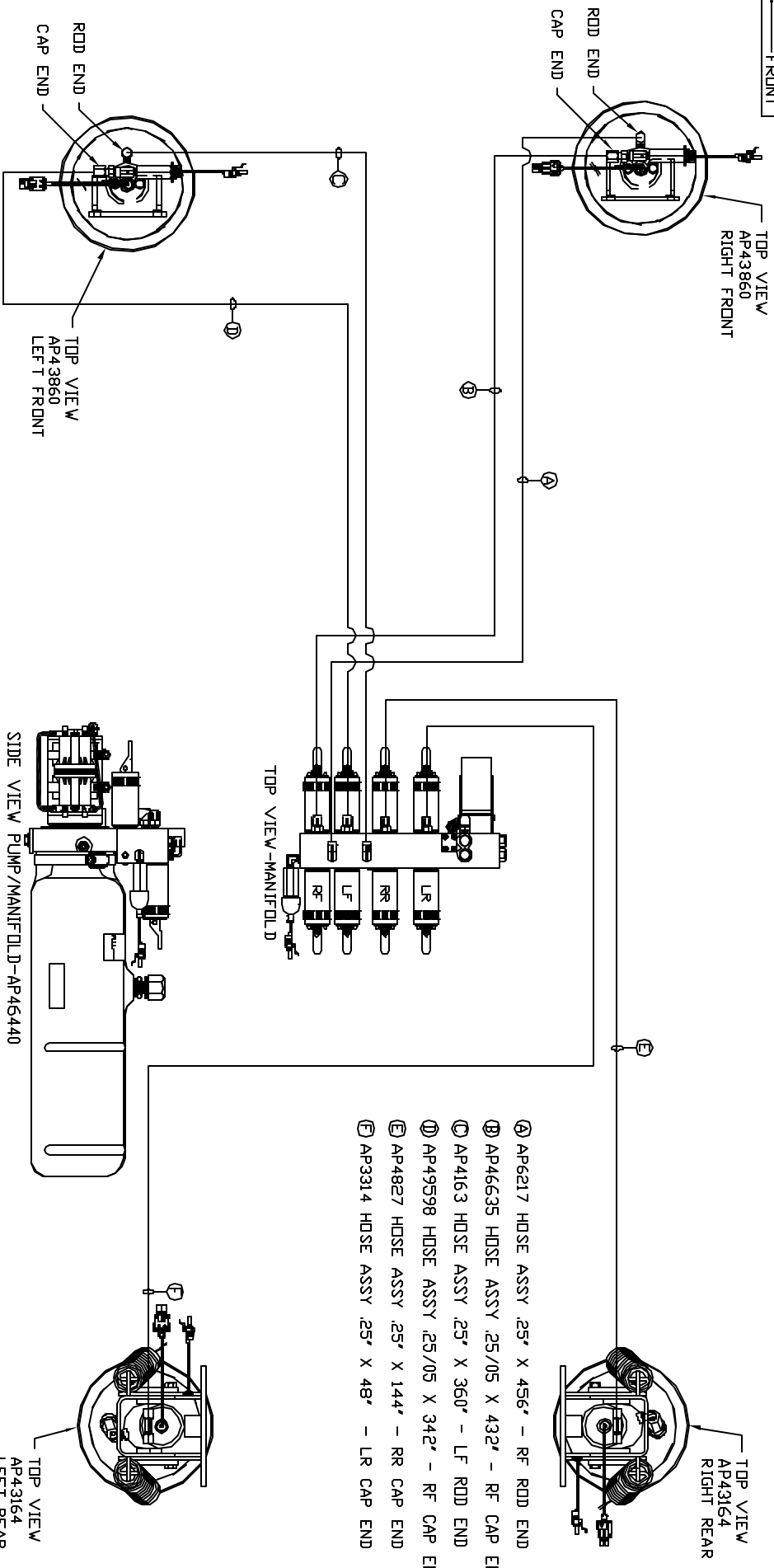


ORIENTATION
FRONT



- Ⓐ AP6217 HOSE ASSY .25" X 456" - RF ROD END
- Ⓑ AP4635 HOSE ASSY .25/05 X 432" - RF CAP END
- Ⓒ AP4163 HOSE ASSY .25" X 360" - LF ROD END
- Ⓓ AP49598 HOSE ASSY .25/05 X 342" - RF CAP END
- Ⓔ AP4827 HOSE ASSY .25" X 144" - RR CAP END
- Ⓕ AP3314 HOSE ASSY .25" X 48" - LR CAP END

NOTE: CROSS TIES REQUIRED FOR FRONT AND REAR JACKS

NOTE: INSTALLATION MUST CONFORM TO GOOD SHOP PRACTICES, SAE STANDARDS, RVIA STANDARDS, AND OTHER APPLICABLE STANDARDS.

LEVELING SYSTEM: APS4023

NO.	DATE	REVISION

THE INFORMATION DISCLOSED IN THIS DRAWING IS CONFIDENTIAL AND MUST NOT BE DISCLOSED OR USED IN ANY MANNER WHICH WILL BE DETRIMENTAL TO THE INH CORPORATION

HWH 1-80 EXIT 267 SOUTH
RT 1 MOSCOW, INDIANA 52760

SCALE 1:6 DATE 18 JUL 14 DRAWN BY .

HYD CONN DIAGRAM

ROLLING STAR DRAWING NUMBER MP70814