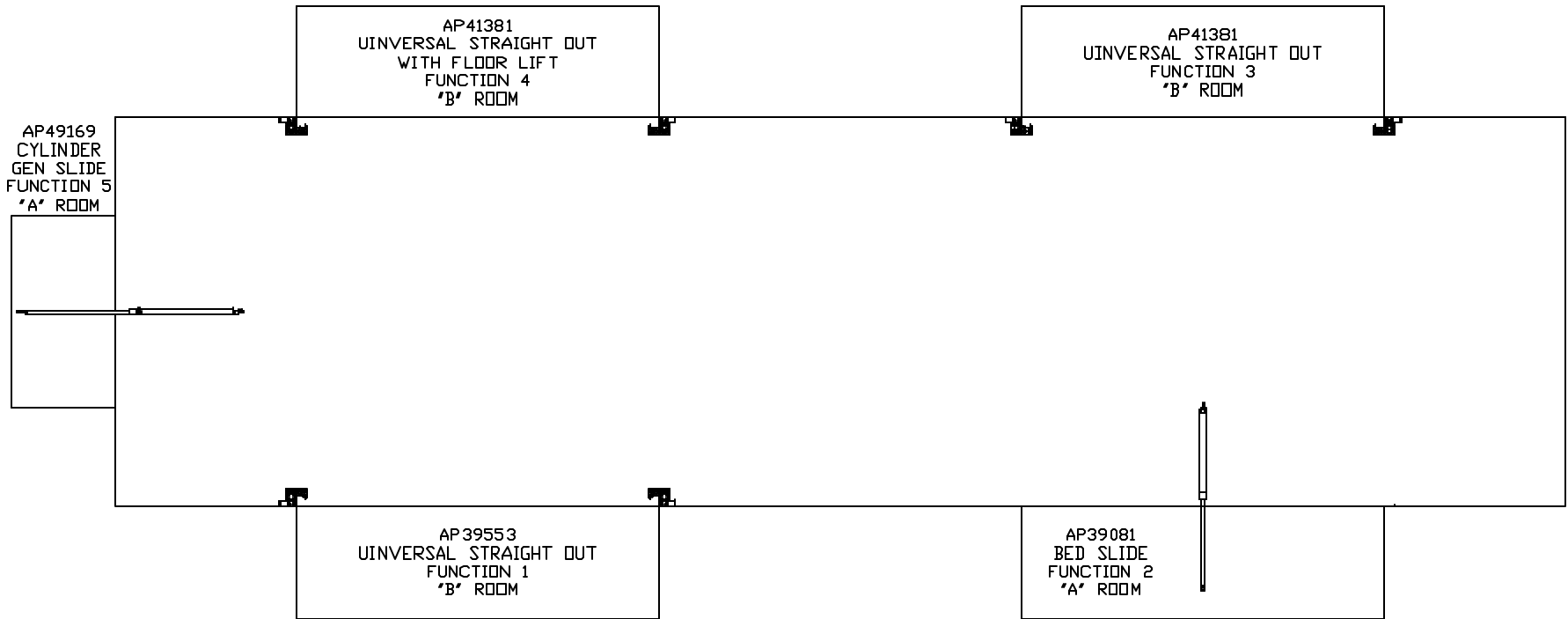


ORIENTATION
 ← FRONT



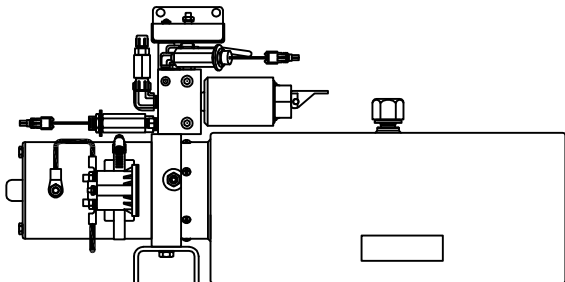
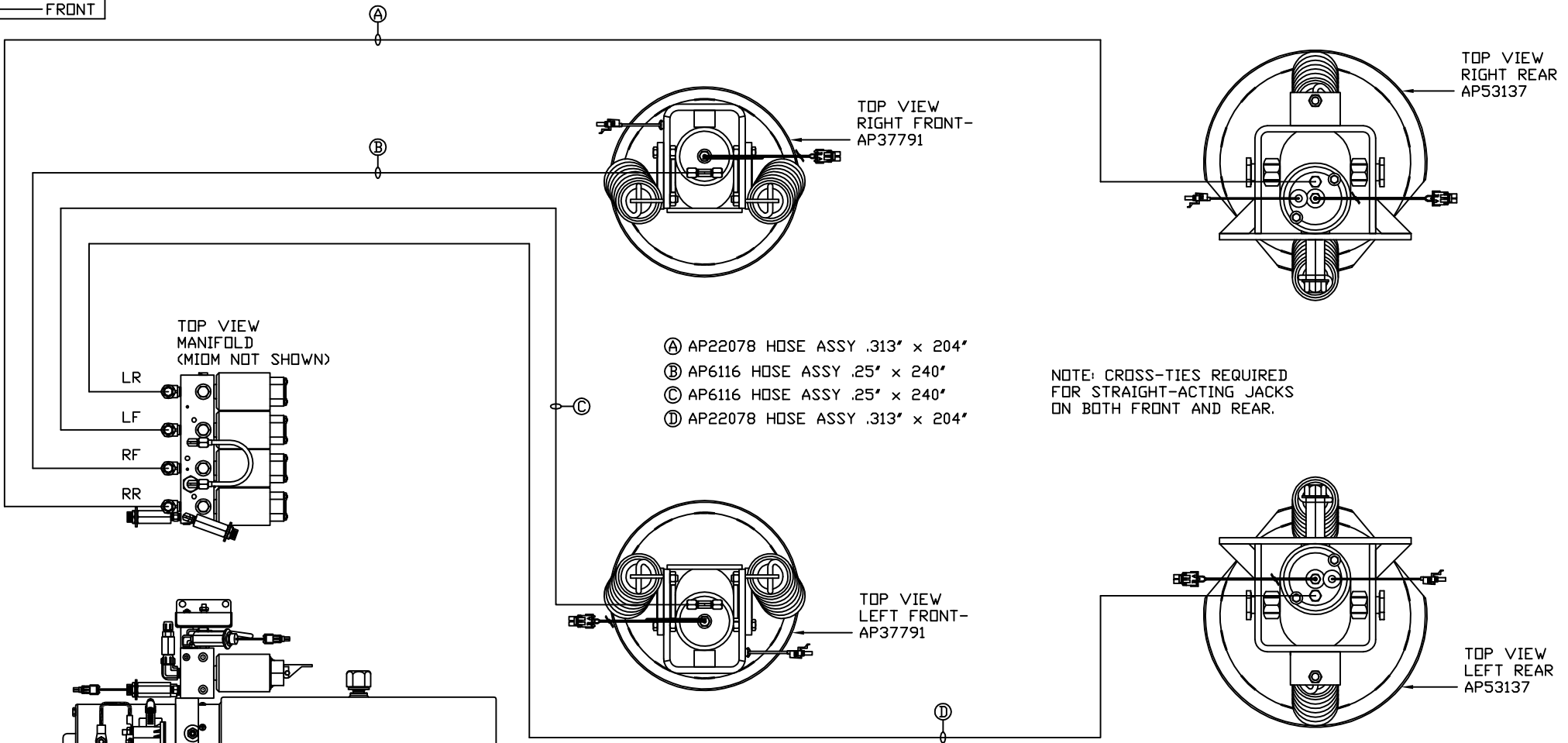
NOTE: INSTALLATION MUST CONFORM TO GOOD SHOP PRACTICES, SAE STANDARDS, RVIA STANDARDS, AND OTHER APPLICABLE STANDARDS.

LEVELING SYSTEM: AP54143

| | | | | | |
|--|---------|-------------------------|--------------|--|--|
| | | HWH | | I-80 EXIT 267 SOUTH RT 1 MOSCOW, IOWA 52760 | |
| | | SCALE 1:6 | DATE 22AUG14 | DRAWN BY . | |
| △ | 22FEB16 | UPDATED HOSE | | | |
| △ | 14MAY15 | CORRECTED CAP/ROD, TYPO | | | |
| NO. | DATE | REVISION | | | |
| THE INFORMATION DISCLOSED ON THIS DRAWING IS CONFIDENTIAL AND MUST NOT BE DISCLOSED OR USED IN ANY MANNER WHICH WILL BE DETRIMENTAL TO THE HWH CORPORATION | | | | | |
| FORETRAVEL | | | | DRAWING NUMBER MP70822 A/F | |

HYD CONN DIAGRAM

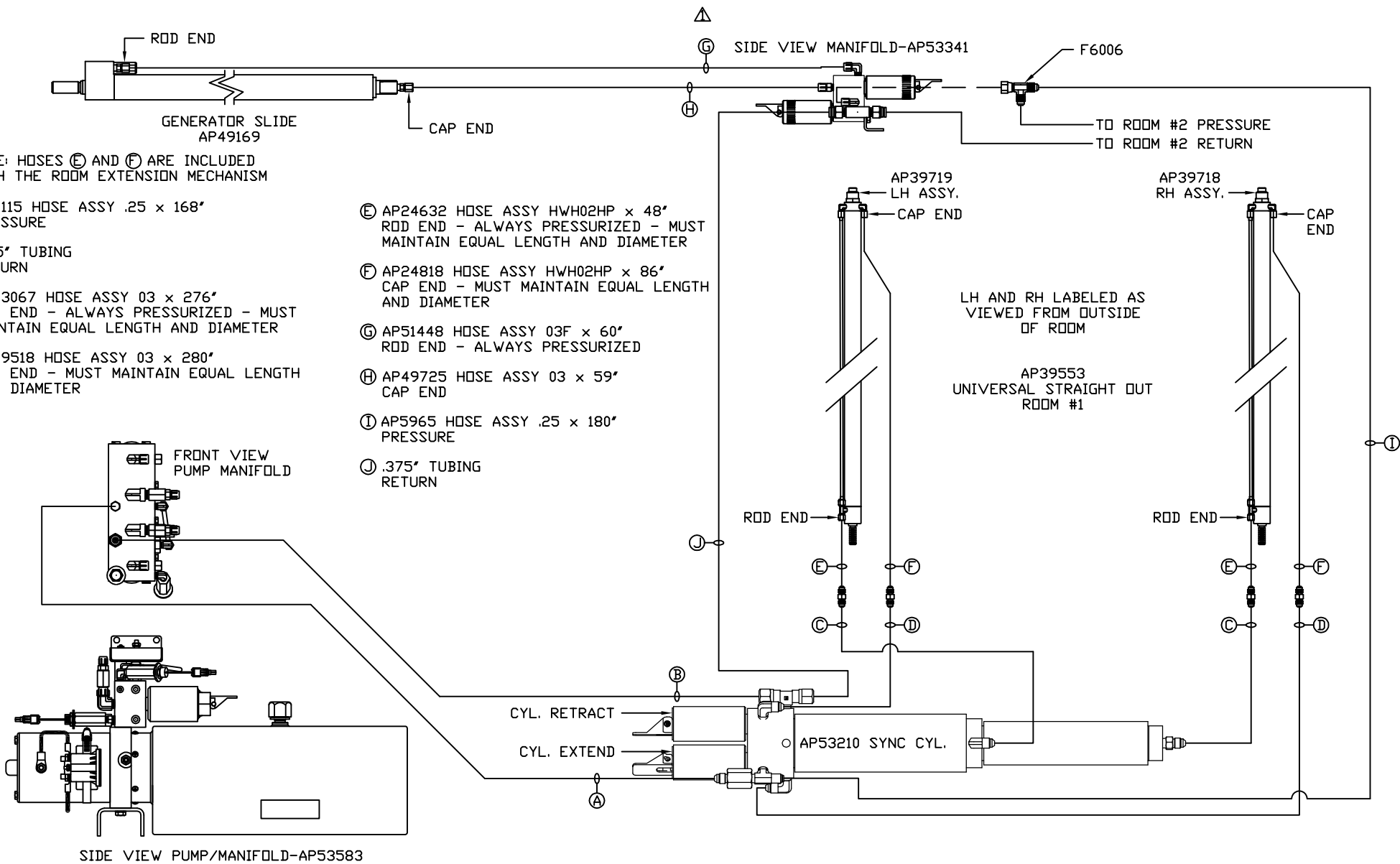
ORIENTATION
 ← FRONT



SIDE VIEW PUMP/MANIFOLD-AP53583

NOTE: INSTALLATION MUST CONFORM TO GOOD SHOP PRACTICES, SAE STANDARDS, RVIA STANDARDS, AND OTHER APPLICABLE STANDARDS.

MP70822 B/F
 22AUG14

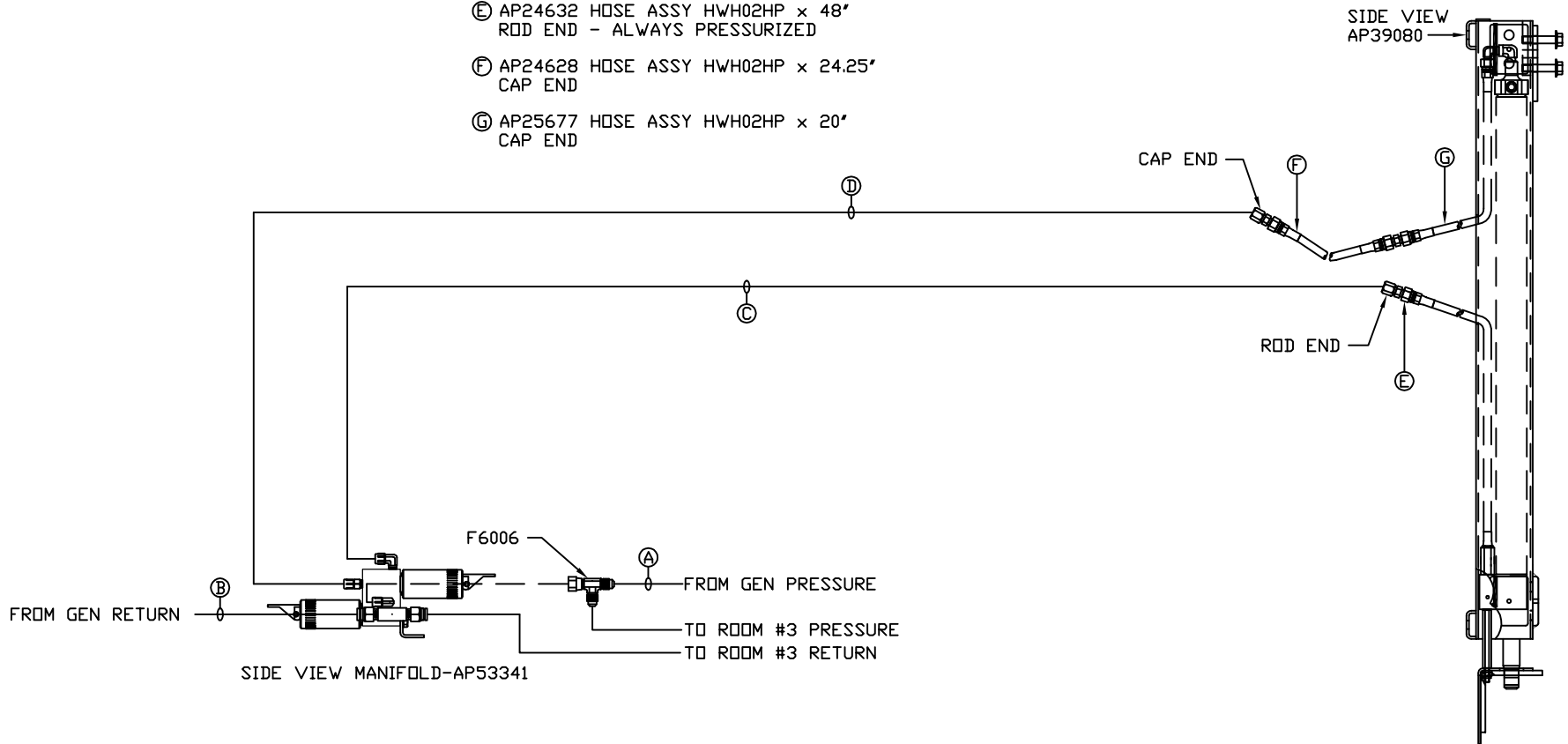


NOTE: INSTALLATION MUST CONFORM TO GOOD SHOP PRACTICES, SAE STANDARDS, RVIA STANDARDS, AND OTHER APPLICABLE STANDARDS.

MP70822 C/F
14MAY15

NOTE: HOSES (E), (F) AND (G) ARE INCLUDED WITH THE ROOM EXTENSION MECHANISM

- (A) HOSE ASSY .25 PRESSURE
- (B) .375" TUBING RETURN
- (C) AP50907 HOSE ASSY 03F x 48" ROD END - ALWAYS PRESSURIZED
- (D) AP49724 HOSE ASSY 03 x 51" CAP END
- (E) AP24632 HOSE ASSY HWH02HP x 48" ROD END - ALWAYS PRESSURIZED
- (F) AP24628 HOSE ASSY HWH02HP x 24.25" CAP END
- (G) AP25677 HOSE ASSY HWH02HP x 20" CAP END



NOTE: INSTALLATION MUST CONFORM TO GOOD SHOP PRACTICES, SAE STANDARDS, RVIA STANDARDS, AND OTHER APPLICABLE STANDARDS.

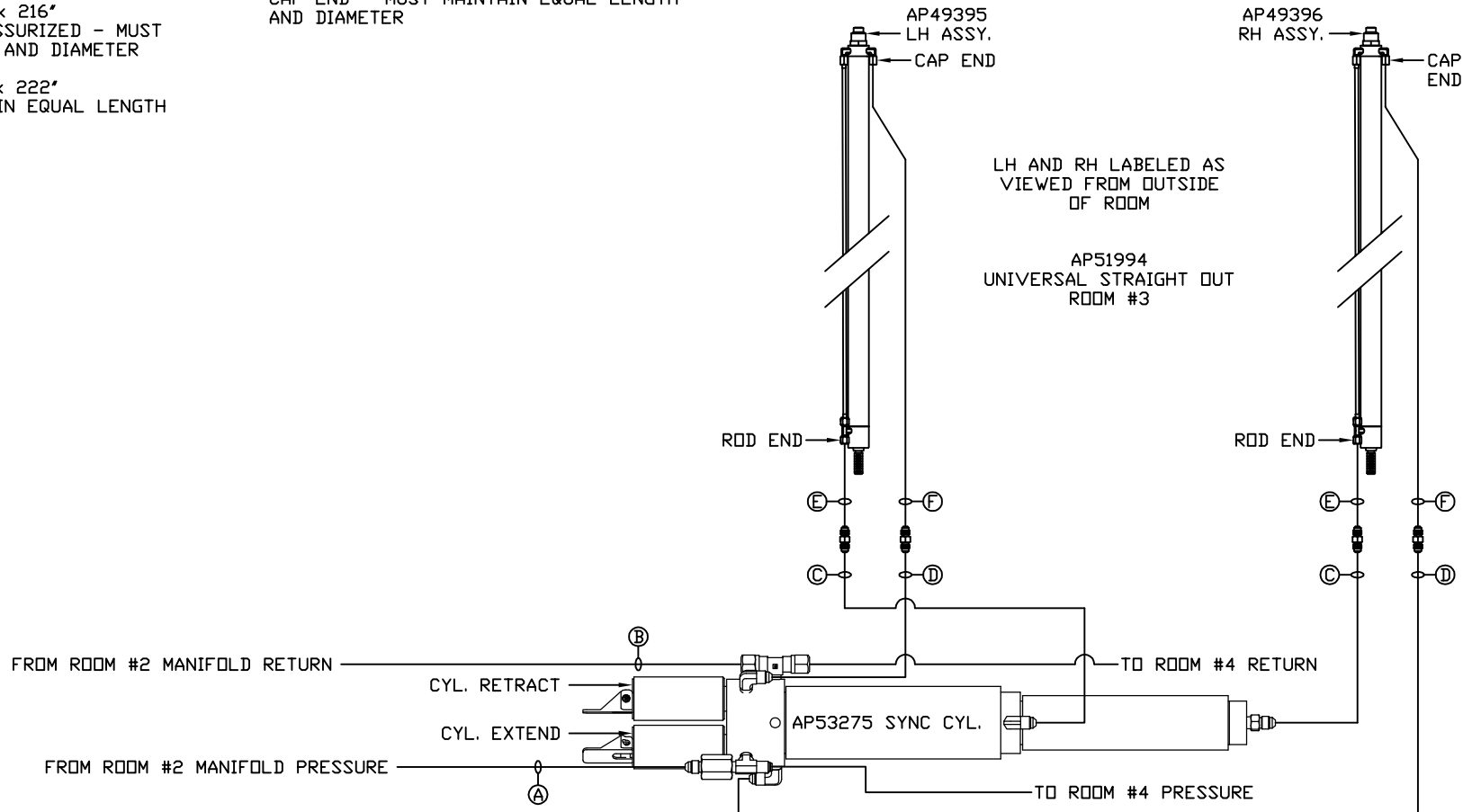
ROOM #2
AP39081
BED SLIDE KIT

MP70822 D/F
22FEB16

NOTE: HOSES (E) AND (F) ARE INCLUDED WITH THE ROOM EXTENSION MECHANISM

- (A) AP4161 HOSE ASSY .25 x 120" PRESSURE
- (B) .375" TUBING RETURN
- (C) AP51635 HOSE ASSY 03 x 216" ROD END - ALWAYS PRESSURIZED - MUST MAINTAIN EQUAL LENGTH AND DIAMETER
- (D) AP51405 HOSE ASSY 03 x 222" CAP END - MUST MAINTAIN EQUAL LENGTH AND DIAMETER

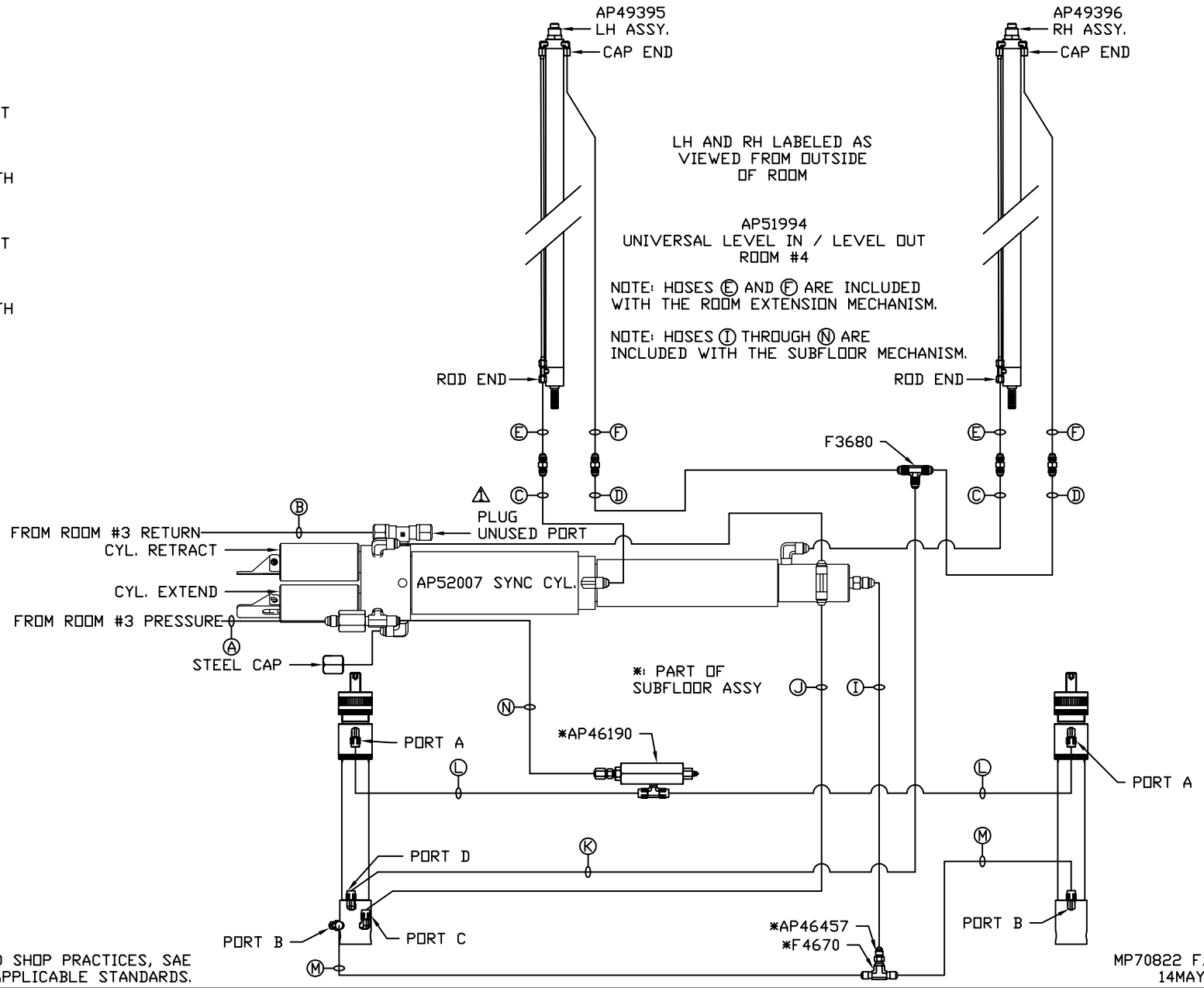
- (E) AP24632 HOSE ASSY HWH02HP x 48" ROD END - ALWAYS PRESSURIZED - MUST MAINTAIN EQUAL LENGTH AND DIAMETER
- (F) AP24818 HOSE ASSY HWH02HP x 86" CAP END - MUST MAINTAIN EQUAL LENGTH AND DIAMETER



NOTE: INSTALLATION MUST CONFORM TO GOOD SHOP PRACTICES, SAE STANDARDS, RVIA STANDARDS, AND OTHER APPLICABLE STANDARDS.

MP70822 E/F
22AUG14

- Ⓐ AP5965 HOSE ASSY .25" x 180"
PRESSURE
- Ⓑ .375" OD NYLON TUBING
RETURN
- Ⓒ AP50261 HOSE ASSY 03" x 168"
ROD END - ALWAYS PRESSURIZED - MUST
MAINTAIN EQUAL LENGTH AND DIAMETER
- Ⓓ AP14173 HOSE ASSY 03" x 174"
CAP END - MUST MAINTAIN EQUAL LENGTH
AND DIAMETER
- Ⓔ AP24632 HOSE ASSY HWH02HP x 48"
ROD END - ALWAYS PRESSURIZED - MUST
MAINTAIN EQUAL LENGTH AND DIAMETER
- Ⓕ AP24818 HOSE ASSY HWH02HP x 86"
CAP END - MUST MAINTAIN EQUAL LENGTH
AND DIAMETER
- Ⓖ AP4218 HOSE ASSY .25" x 40"
CAP END (LIFT)
- Ⓙ AP4062 HOSE ASSY .25" x 132"
CAP END (LIFT)
- Ⓚ AP5350 HOSE ASSY .25" x 57"
CAP END (ROOM)
- Ⓛ AP4073 HOSE ASSY .25" x 90"
ROD END (LIFT) - ALWAYS
PRESSURIZED
- Ⓜ AP7177 HOSE ASSY .25" x 70"
CAP END (LIFT)
- Ⓝ AP4075 HOSE ASSY .25" x 42"
ROD END - ALWAYS PRESSURIZED (LIFT)



NOTE: INSTALLATION MUST CONFORM TO GOOD SHOP PRACTICES, SAE STANDARDS, RVIA STANDARDS, AND OTHER APPLICABLE STANDARDS.