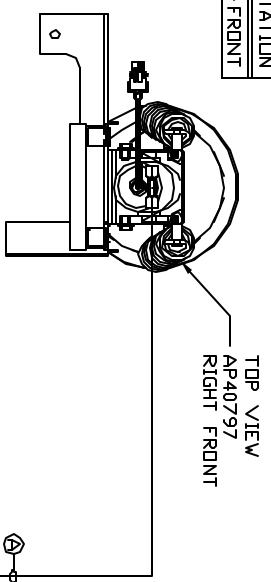
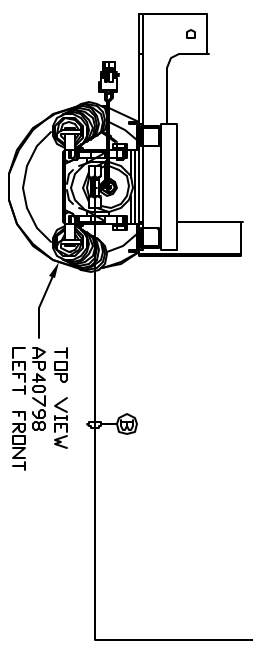


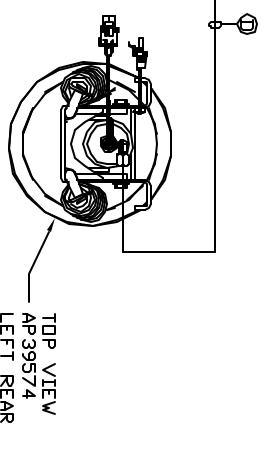
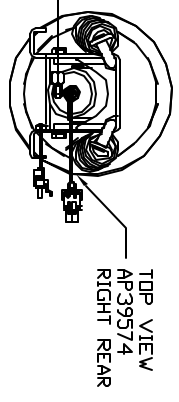
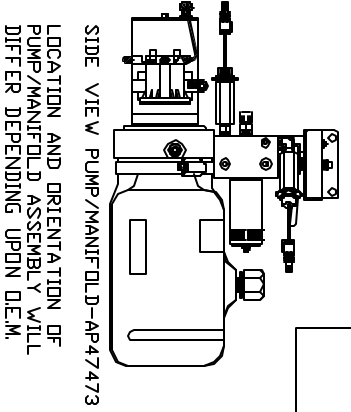
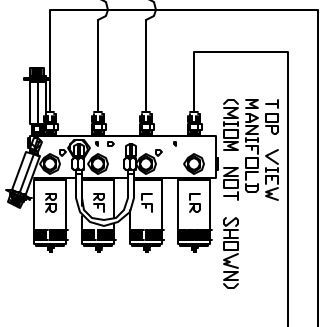
ORIENTATION
FRONT



CROSS TIE REQUIRED
FOR FRONT AND REAR JACKS.



- Ⓐ AP6115 HOSE ASSY .25" x 168"
- Ⓑ AP7832 HOSE ASSY .25" x 100"
- Ⓒ AP4061 HOSE ASSY .25" x 216"
- Ⓓ AP6115 HOSE ASSY .25" x 168"



NOTE: INSTALLATION MUST CONFORM TO GOOD SHOP PRACTICES, SAE STANDARDS, RVIA STANDARDS, AND OTHER APPLICABLE STANDARDS.

LEVELING SYSTEM: AFS4268

NO.	DATE	REVISION

HWH 1-80 EXIT 267 SOUTH
 RT 1 MOSCOW, IOWA 52760
 SCALE 1:6 DATE 14JAN15 DRAWN BY .
HYD CONN DIAGRAM
 QUALITY VANS DRAWING NUMBER MP70834

THE INFORMATION DISCLOSED IN THIS DRAWING IS CONFIDENTIAL AND MUST NOT BE DISCLOSED OR USED IN ANY MANNER WHICH WILL BE DETRIMENTAL TO THE RVH CORPORATION