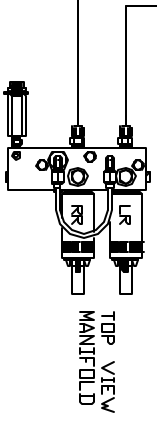
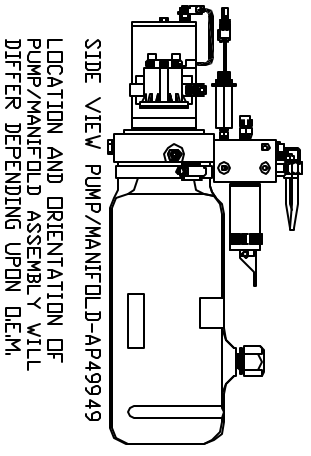
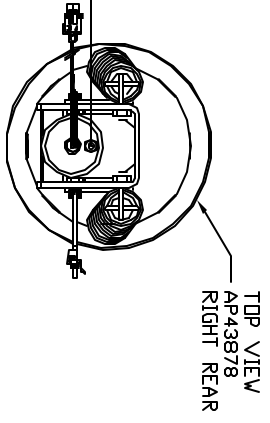
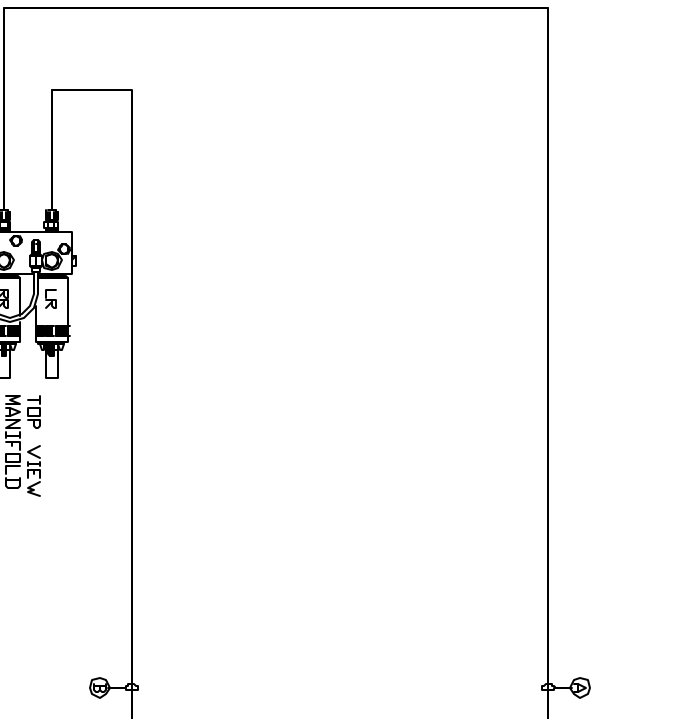


ORIENTATION
FRONT

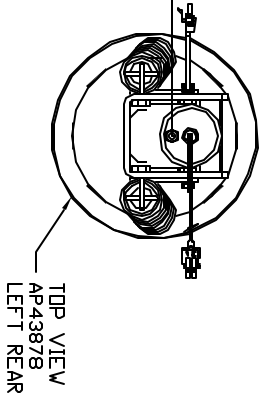
NOTE: INSTALLATION MUST CONFORM TO GOOD SHOP PRACTICES, SAE STANDARDS, RYLA STANDARDS, AND OTHER APPLICABLE STANDARDS. LEVELING SYSTEM: AP54502



- Ⓐ AP4161 HOSE ASSY 04 x 120'
- Ⓑ AP4827 HOSE ASSY 04 x 144'



CROSS-TIES REQUIRED FOR REAR JACKS.



NO.	DATE	REVISION

<p>THE INFORMATION DISCLOSED IN THIS DRAWING IS CONFIDENTIAL AND MUST NOT BE DISCLOSED OR USED IN ANY MANNER WHICH WILL BE DETRIMENTAL TO THE IHH CORPORATION</p>	
<p>HW H</p> <p>1-80 EXIT 267 SOUTH RT 1 MOSCOV, IOWA 52760</p>	<p>SCALE 1:6</p> <p>DATE 15JAN15</p> <p>DRAWN BY .</p>
<p>HYD CONN DIAGRAM</p>	<p>ITB</p>
<p>DRAWING NUMBER</p> <p>MP70840</p>	