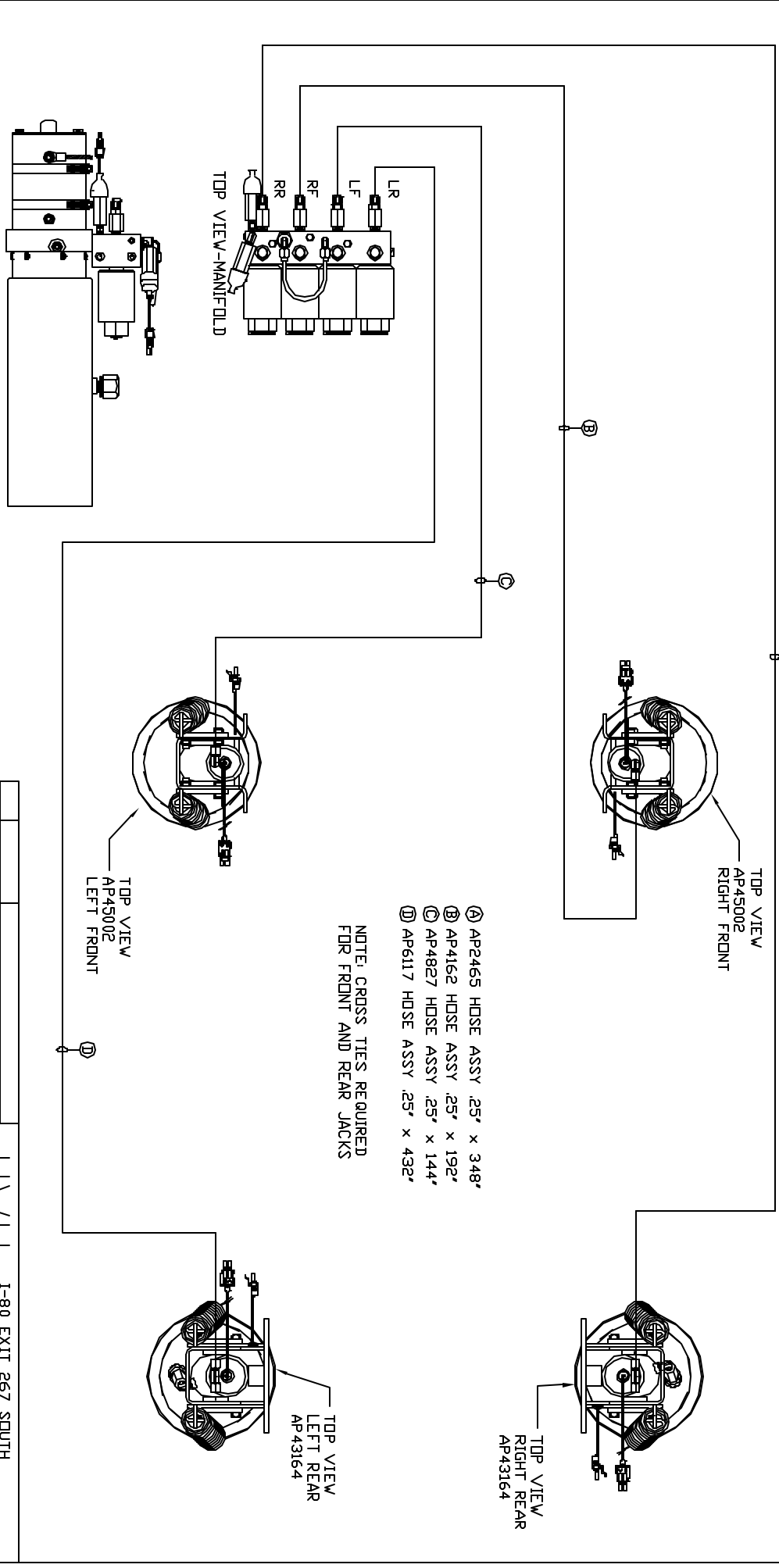


ORIENTATION
FRONT



- Ⓐ AP2465 HOSE ASSY .25" x 348"
- Ⓑ AP4162 HOSE ASSY .25" x 192"
- Ⓒ AP4827 HOSE ASSY .25" x 144"
- Ⓓ AP6117 HOSE ASSY .25" x 432"

NOTE: CROSS TIES REQUIRED FOR FRONT AND REAR JACKS

SIDE VIEW PUMP/MANIFOLD-AP36394
LOCATION AND ORIENTATION OF PUMP/MANIFOLD ASSEMBLY WILL DIFFER DEPENDING UPON O.E.M.

NOTE: INSTALLATION MUST CONFORM TO GOOD SHOP PRACTICES, SAE STANDARDS, RVIA STANDARDS, AND OTHER APPLICABLE STANDARDS.

LEVELING SYSTEM AP54879

NO.	DATE	REVISION

<p>THE INFORMATION DISCLOSED IN THIS DRAWING IS CONFIDENTIAL AND MUST NOT BE DISCLOSED OR USED IN ANY MANNER WHICH WILL BE DETRIMENTAL TO THE RVH CORPORATION</p>	<p>HWH 1-80 EXIT 267 SOUTH RT 1 MOSCOV, IDVA 52760</p>	<p>PLANET COMM.</p>	<p>DRAWING NUMBER MP70852</p>
---	--	---------------------	-----------------------------------

SCALE 1:6 DATE 26 JAN 14 DRAWN BY .
HYD CONN DIAGRAM