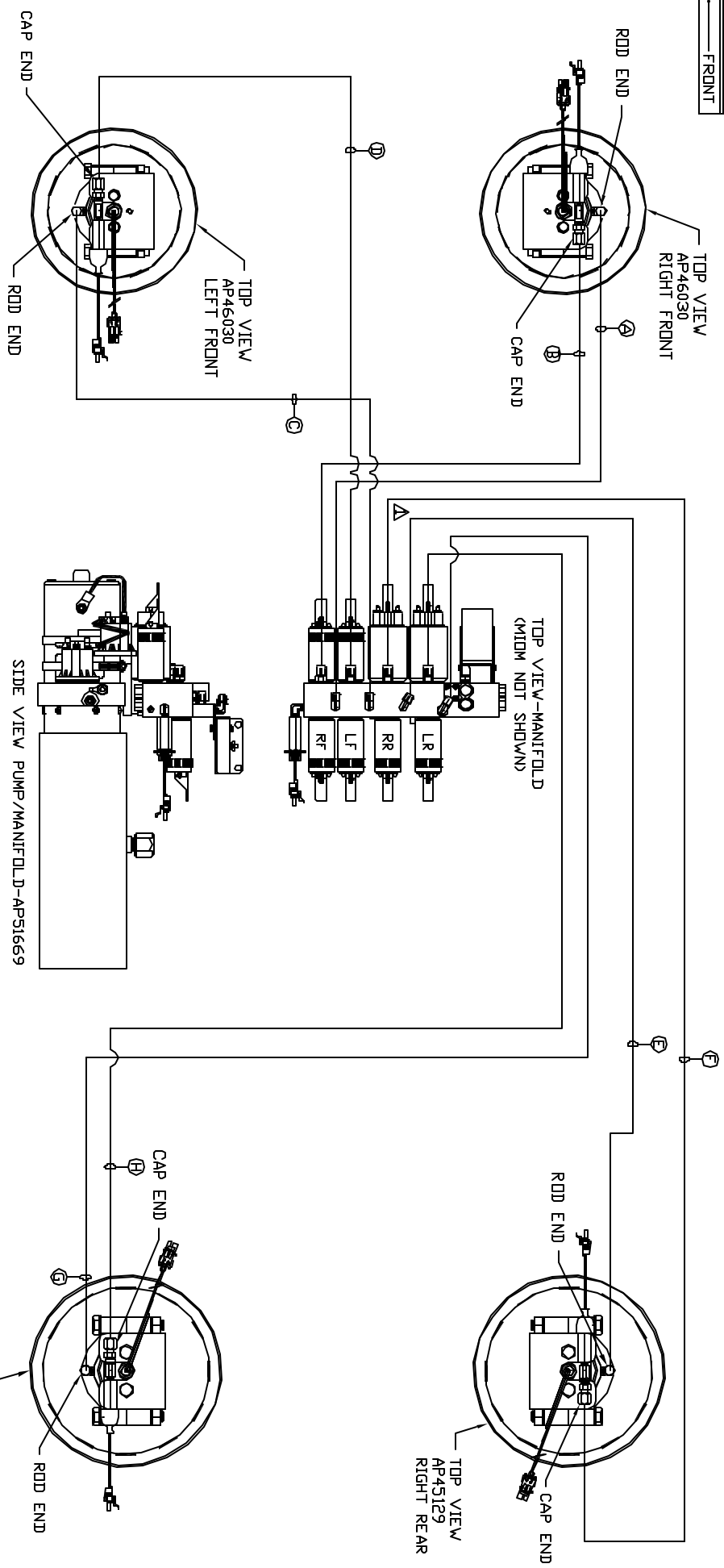


ORIENTATION  
FRONT



- Ⓐ AP6116 HOSE ASSY 04 x 240' - RF ROD END
- Ⓑ AP54011 HOSE ASSY 05 x 216' - RF CAP END
- Ⓒ AP4310 HOSE ASSY 04 x 204' - LF ROD END
- Ⓓ AP19013 HOSE ASSY 05 x 180' - LF CAP END
- Ⓔ AP6116 HOSE ASSY 04 x 240' - RR ROD END
- Ⓕ AP54011 HOSE ASSY 05 x 216' - RR CAP END
- Ⓖ AP4310 HOSE ASSY 04 x 204' - LR ROD END
- Ⓗ AP19013 HOSE ASSY 05 x 180' - LR CAP END

NOTE: INSTALLATION MUST CONFORM TO GOOD SHOP PRACTICES, SAE STANDARDS, RYLA STANDARDS, AND OTHER APPLICABLE STANDARDS.

LEVELING SYSTEM AP54728

NO.	DATE	REVISION
Δ	16FEB16	CORRECTED ROD/CAP

THE INFORMATION DISCLOSED IN THIS DRAWING IS CONFIDENTIAL AND MUST NOT BE DISCLOSED OR USED IN ANY MANNER WHICH WILL BE DETRIMENTAL TO THE INH CORPORATION

SCALE 1:6 DATE 03FEB15 DRAWN BY .

HYD CONN DIAGRAM

1-80 EXT 267 SOUTH  
RT 1 MOSCOW, IOWA 52760

KENTUCKY TRAILER

DRAWING NUMBER  
MP70856