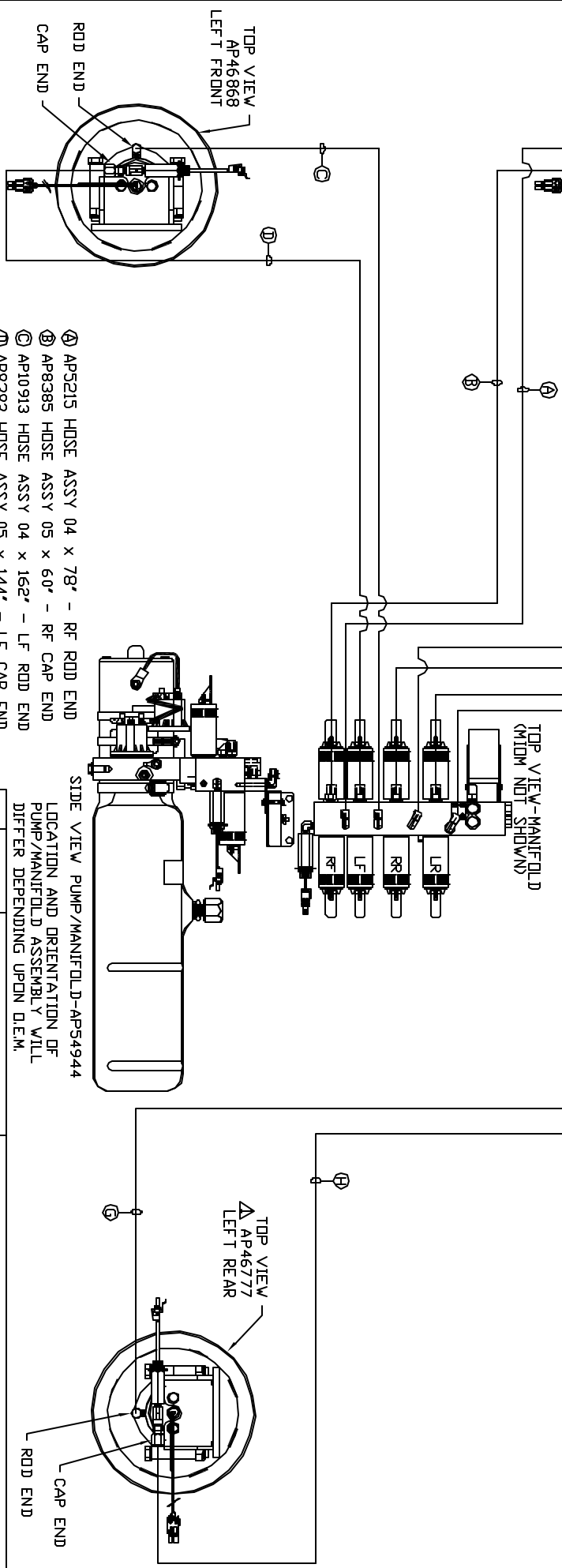
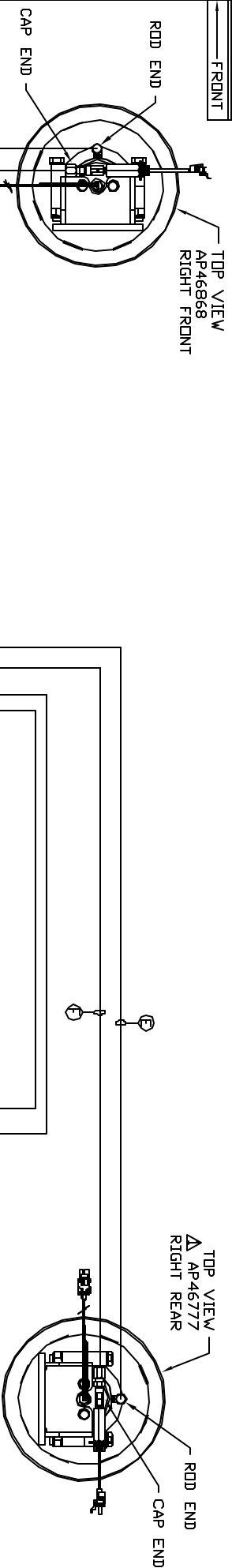


ORIENTATION  
FRONT



- Ⓐ AP5215 HOSE ASSY 04 X 78' - RF RD END
- Ⓑ AP8385 HOSE ASSY 05 X 60' - RF CAP END
- Ⓒ AP10913 HOSE ASSY 04 X 162' - LF RD END
- Ⓓ AP8382 HOSE ASSY 05 X 144' - LF CAP END
- Ⓔ AP6117 HOSE ASSY 04 X 432' - RR RD END
- Ⓕ AP15835 HOSE ASSY 05 X 408' - RR CAP END
- Ⓖ AP7178 HOSE ASSY 04 X 504' - LR RD END
- Ⓗ AP7816 HOSE ASSY 05 X 480' - LR CAP END

NOTE: INSTALLATION MUST CONFORM TO GOOD SHIP PRACTICES, SAE STANDARDS, RVIA STANDARDS, AND OTHER APPLICABLE STANDARDS.

LEVELING SYSTEM: AP54929

LOCATION AND ORIENTATION OF PUMP/MANIFOLD ASSEMBLY WILL DIFFER DEPENDING UPON DEM.

Δ	22FE816	WAS AP46868
NO.	DATE	REVISION

THE INFORMATION DISCLOSED IN THIS DRAWING IS CONFIDENTIAL AND MUST NOT BE DISCLOSED OR USED IN ANY MANNER WHICH WILL BE DETRIMENTAL TO THE IRI CORPORATION

HWH 1-80 EXT 267 SOUTH  
RT 1 MOSCOW, IOWA 52760

SCALE 1:6 DATE 13MAR15 DRAWN BY .

HYD CONN DIAGRAM

PLAYMOR TRAILER DRAWING NUMBER MP70857