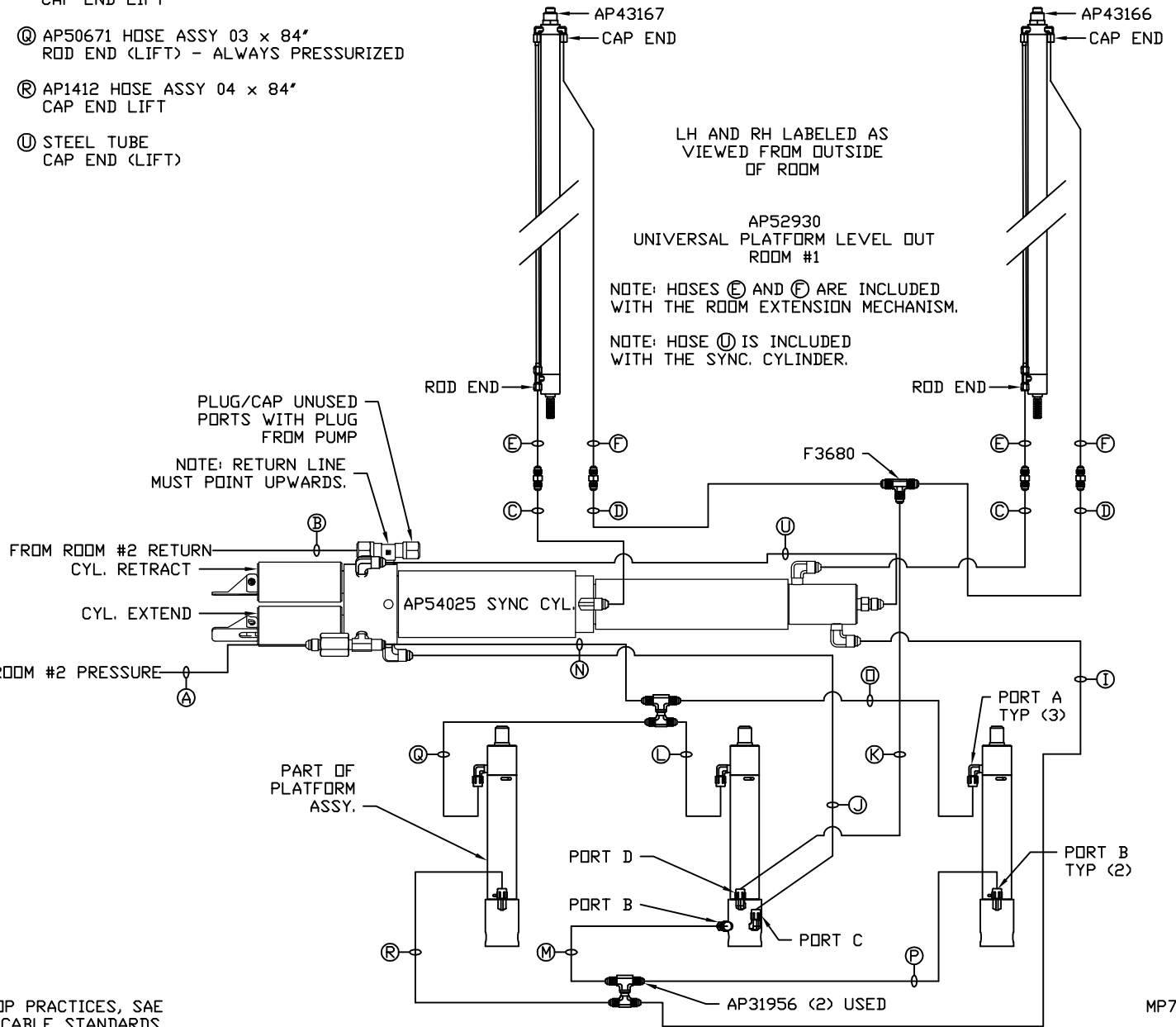


- Ⓐ AP4059 HOSE ASSY 04 x 36" PRESSURE
- Ⓑ P31138 .375" OD NYLON TUBING x 36" RETURN
- Ⓒ AP49245 HOSE ASSY 03 x 120" ROD END - ALWAYS PRESSURIZED - MUST BE HIGH PRESSURE HOSES OF EQUAL LENGTH AND DIAMETER
- Ⓓ AP2445 HOSE ASSY 04 x 90" CAP END - MUST MAINTAIN EQUAL LENGTH AND DIAMETER
- Ⓔ AP24632 HOSE ASSY HWH02HP x 48" ROD END - ALWAYS PRESSURIZED - MUST BE HIGH PRESSURE HOSES OF EQUAL LENGTH AND DIAMETER
- Ⓕ AP24818 HOSE ASSY HWH02HP x 86" CAP END - MUST MAINTAIN EQUAL LENGTH AND DIAMETER
- Ⓖ AP4073 HOSE ASSY 04 x 60" CAP END (LIFT)
- Ⓙ AP50910 HOSE ASSY 03 x 90" CAP END (ROOM)
- Ⓚ AP16434 HOSE ASSY 03 x 24" CAP END (ROOM)
- Ⓛ AP16434 HOSE ASSY 03 x 24" ROD END (LIFT) - ALWAYS PRESSURIZED
- Ⓜ AP4060 HOSE ASSY 04 x 24" CAP END (LIFT)
- Ⓝ AP2445 HOSE ASSY 04 x 90" ROD END - ALWAYS PRESSURIZED (LIFT)
- Ⓟ AP50671 HOSE ASSY 03 x 84" ROD END (LIFT) - ALWAYS PRESSURIZED

- Ⓠ AP1412 HOSE ASSY 04 x 84" CAP END LIFT
- Ⓡ AP50671 HOSE ASSY 03 x 84" ROD END (LIFT) - ALWAYS PRESSURIZED
- Ⓢ AP1412 HOSE ASSY 04 x 84" CAP END LIFT
- Ⓣ STEEL TUBE CAP END (LIFT)

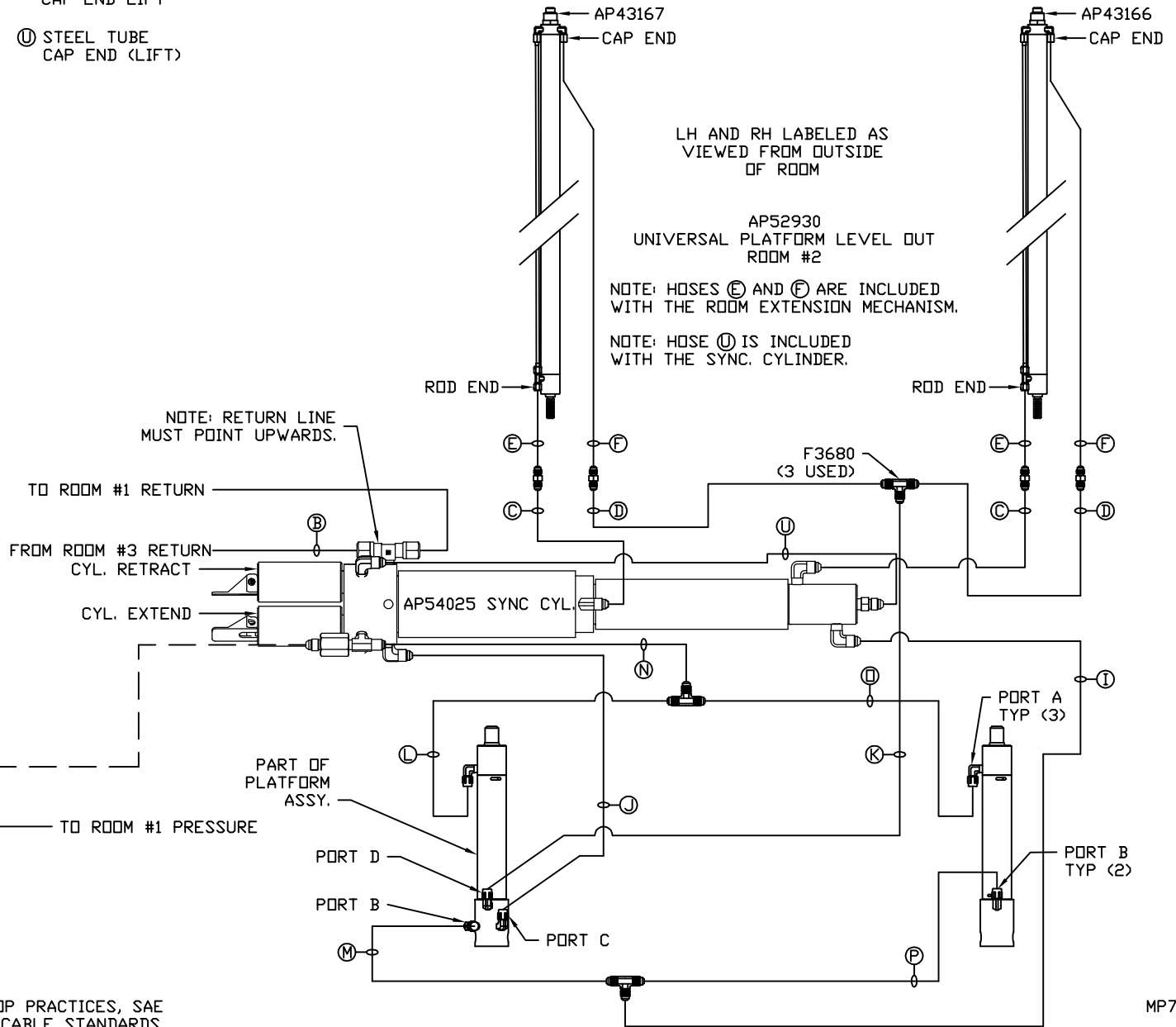


NOTE: INSTALLATION MUST CONFORM TO GOOD SHOP PRACTICES, SAE STANDARDS, RVIA STANDARDS, AND OTHER APPLICABLE STANDARDS.

MP70868 B/D
02APR15

- (A) AP4064 HOSE ASSY 04 x 300' PRESSURE
- (B) P4479 .375" OD NYLON TUBING x 360' RETURN
- (C) AP49245 HOSE ASSY 03 x 120' ROD END - ALWAYS PRESSURIZED - MUST BE HIGH PRESSURE HOSES OF EQUAL LENGTH AND DIAMETER
- (D) AP4159 HOSE ASSY 04 x 72' CAP END - MUST MAINTAIN EQUAL LENGTH AND DIAMETER
- (E) AP24632 HOSE ASSY HWH02HP x 48' ROD END - ALWAYS PRESSURIZED - MUST BE HIGH PRESSURE HOSES OF EQUAL LENGTH AND DIAMETER
- (F) AP24818 HOSE ASSY HWH02HP x 86' CAP END - MUST MAINTAIN EQUAL LENGTH AND DIAMETER
- (I) AP4159 HOSE ASSY 04 x 72' CAP END (LIFT)
- (J) AP50766 HOSE ASSY 03 x 96' CAP END (ROOM)
- (K) AP50909 HOSE ASSY 03 x 72' CAP END (ROOM)
- (L) AP49243 HOSE ASSY 03 x 60' ROD END (LIFT) - ALWAYS PRESSURIZED
- (M) AP50671 HOSE ASSY 03 x 84' CAP END (LIFT)
- (N) AP4159 HOSE ASSY 04 x 72' ROD END - ALWAYS PRESSURIZED (LIFT)
- (O) AP49243 HOSE ASSY 03 x 60' ROD END (LIFT) - ALWAYS PRESSURIZED

- (P) AP50671 HOSE ASSY 03 x 84' CAP END LIFT
- (U) STEEL TUBE CAP END (LIFT)



NOTE: INSTALLATION MUST CONFORM TO GOOD SHOP PRACTICES, SAE STANDARDS, RVIA STANDARDS, AND OTHER APPLICABLE STANDARDS.

MP70868 C/D
02APR15

Ⓐ AP4059 HOSE ASSY 04 x 36'
PRESSURE

Ⓐ Ⓜ AP49244 HOSE ASSY 03 x 108'
WAS AP4073 HOSE ASSY 04 x 60'
CAP END LIFT

ⓑ P31138 .375" OD NYLON TUBING x 36'
RETURN

Ⓧ STEEL TUBE
CAP END (LIFT)

Ⓒ AP50556 HOSE ASSY 03 x 114'
ROD END - ALWAYS PRESSURIZED - MUST
BE HIGH PRESSURE HOSES OF EQUAL
LENGTH AND DIAMETER

Ⓓ AP4073 HOSE ASSY 04 x 60'
CAP END - MUST MAINTAIN EQUAL LENGTH
AND DIAMETER

Ⓔ AP24632 HOSE ASSY HWH02HP x 48'
ROD END - ALWAYS PRESSURIZED - MUST
BE HIGH PRESSURE HOSES OF EQUAL
LENGTH AND DIAMETER

Ⓕ AP24818 HOSE ASSY HWH02HP x 86'
CAP END - MUST MAINTAIN EQUAL LENGTH
AND DIAMETER

Ⓝ AP4073 HOSE ASSY 04 x 60'
CAP END (LIFT)

Ⓞ AP50766 HOSE ASSY 03 x 96'
CAP END (ROOM)

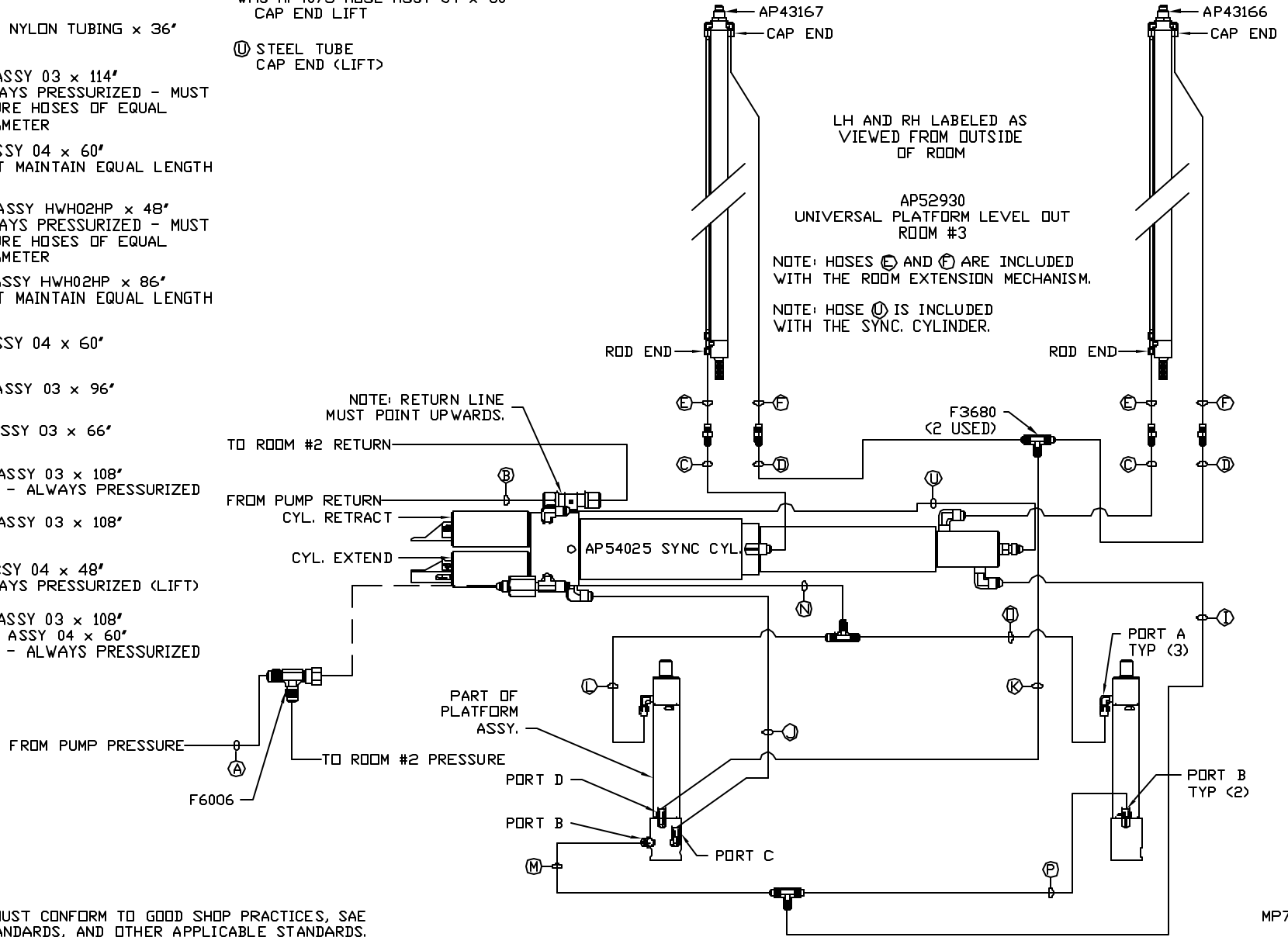
Ⓟ AP51480 HOSE ASSY 03 x 66'
CAP END (ROOM)

Ⓛ AP49244 HOSE ASSY 03 x 108'
ROD END (LIFT) - ALWAYS PRESSURIZED

Ⓜ AP49244 HOSE ASSY 03 x 108'
CAP END (LIFT)

Ⓝ AP3314 HOSE ASSY 04 x 48'
ROD END - ALWAYS PRESSURIZED (LIFT)

Ⓐ Ⓧ AP49244 HOSE ASSY 03 x 108'
WAS AP4073 HOSE ASSY 04 x 60'
ROD END (LIFT) - ALWAYS PRESSURIZED



NOTE: INSTALLATION MUST CONFORM TO GOOD SHOP PRACTICES, SAE
STANDARDS, RVIA STANDARDS, AND OTHER APPLICABLE STANDARDS.

MP70868 D/D
22FEB16