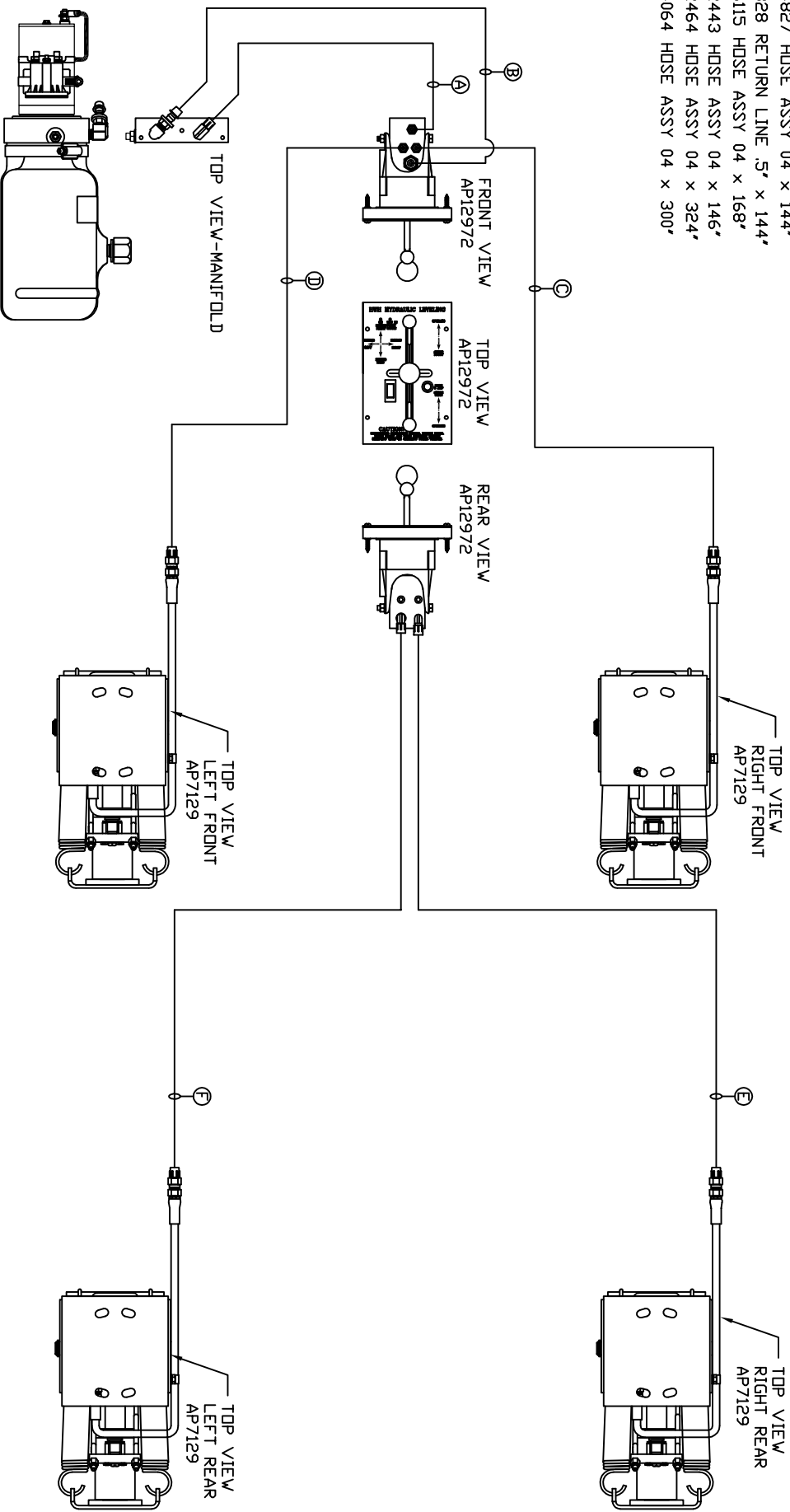


ORIENTATION  
FRONT

- Ⓐ AP4827 HOSE ASSY 04 x 144"
- Ⓑ P4828 RETURN LINE .5" x 144"
- Ⓒ AP6115 HOSE ASSY 04 x 168"
- Ⓓ AP2443 HOSE ASSY 04 x 146"
- Ⓔ AP2464 HOSE ASSY 04 x 324"
- Ⓕ AP4064 HOSE ASSY 04 x 300"



LOCATION AND ORIENTATION OF PUMP/MANIFOLD ASSEMBLY WILL DIFFER DEPENDING UPON DEM.

NOTE: INSTALLATION MUST CONFORM TO GOOD SHOP PRACTICES, SAE STANDARDS, RVIA STANDARDS, AND OTHER APPLICABLE STANDARDS.

LEVELING SYSTEM: AP55285

THE INFORMATION DISCLOSED ON THIS DRAWING IS CONFIDENTIAL AND MUST NOT BE DISCLOSED OR USED IN ANY MANNER WHICH WILL BE DETRIMENTAL TO THE HWH CORPORATION

HWH		1-80 EXIT 267 SOUTH	
RT 1 MOSCOW, IDWA 52760		DRAWN BY	
SCALE 1:6	DATE 08JUN15	HYD CONN DIAGRAM	
NO.	DATE	REVISION	DRAWING NUMBER
			MP70883
CEREM			