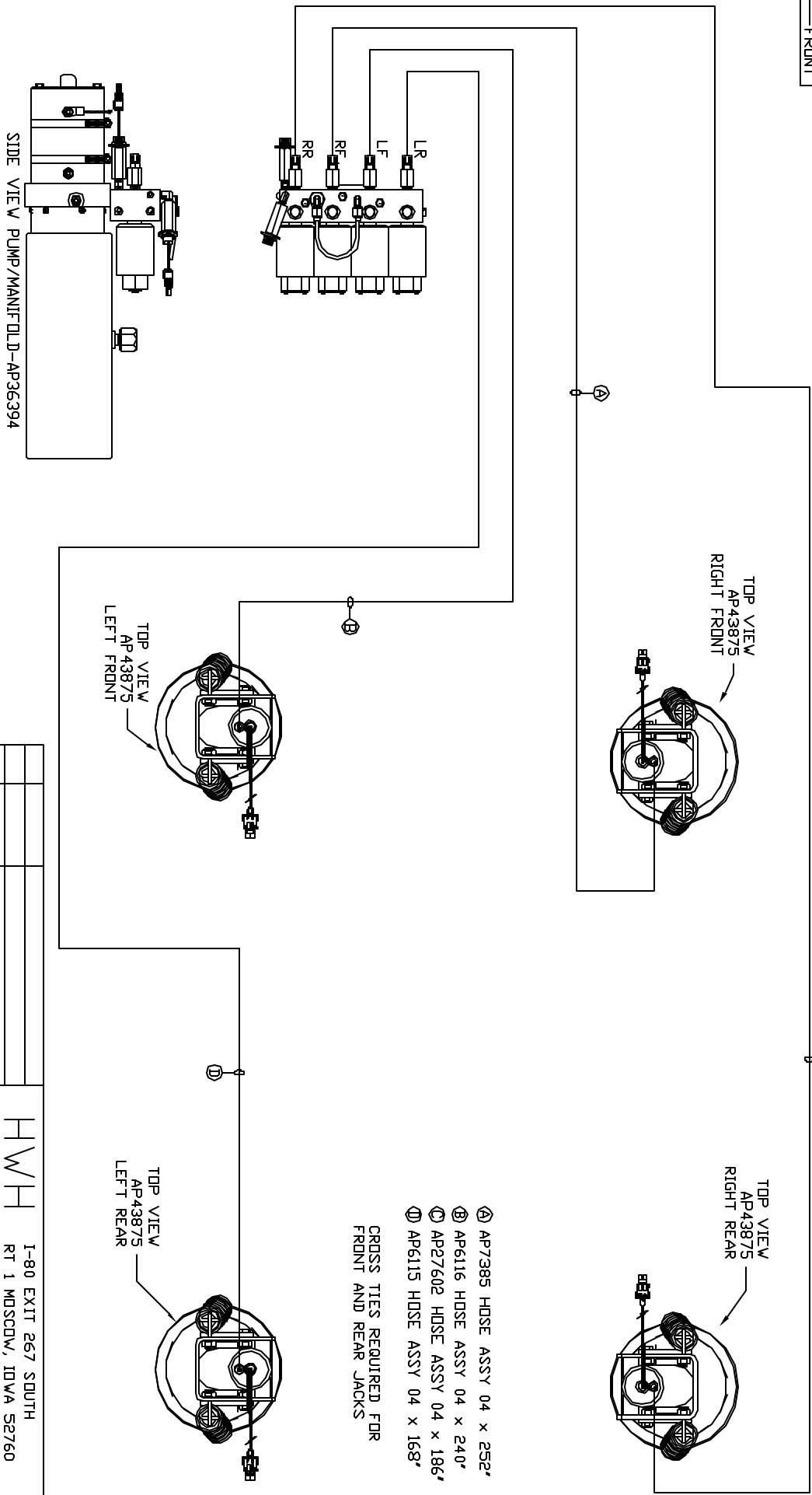


ORIENTATION
FRONT



LOCATION AND ORIENTATION OF PUMP/MANIFOLD ASSEMBLY WILL DIFFER DEPENDING UPON DEM.

SIDE VIEW PUMP/MANIFOLD-AP36394

NOTE: INSTALLATION MUST CONFORM TO GOOD SHOP PRACTICES, SAE STANDARDS, RYLA STANDARDS, AND OTHER APPLICABLE STANDARDS.

LEVELING SYSTEM: AP55780

NO.	DATE	REVISION

HW H	1-80 EXIT 267 SOUTH
HYD CONN DIAGRAM	RT 1 MOSCOV, IDVA 52760
ALT INTER CORP	DRAWING NUMBER
	MP70957

- Ⓐ AP7385 HOSE ASSY 04 x 252'
 - Ⓑ AP6116 HOSE ASSY 04 x 240'
 - Ⓒ AP27602 HOSE ASSY 04 x 186'
 - Ⓓ AP6115 HOSE ASSY 04 x 168'
- CROSS TIES REQUIRED FOR FRONT AND REAR JACKS

THE INFORMATION DISCLOSED IN THIS DRAWING IS CONFIDENTIAL AND MUST NOT BE DISCLOSED OR USED IN ANY MANNER WHICH WILL BE DETRIMENTAL TO THE IAH CORPORATION