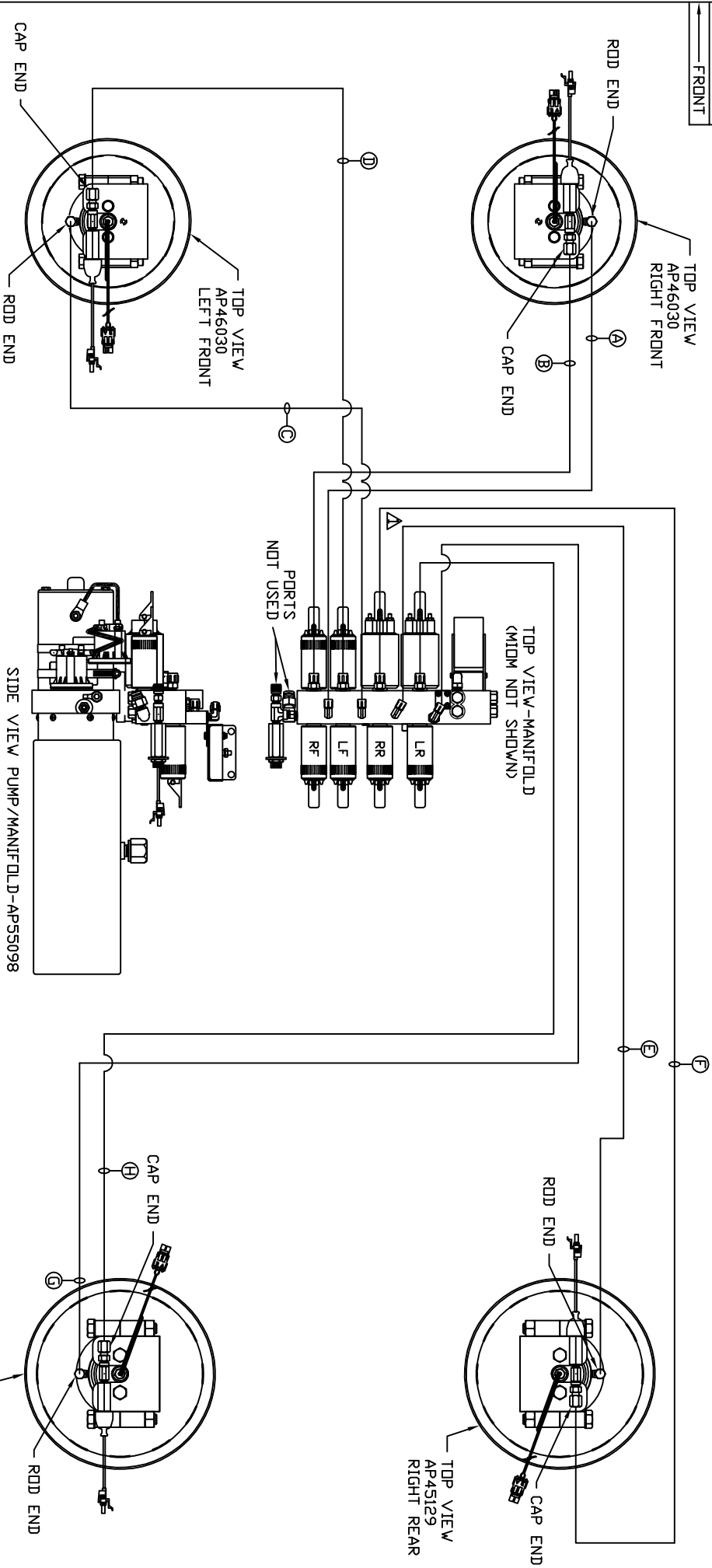


ORIENTATION
FRONT



LOCATION AND ORIENTATION OF PUMP/MANIFOLD ASSEMBLY WILL DIFFER DEPENDING UPON O.E.M.

- Ⓐ AP4064 HOSE ASSY 04 x 300' - RF ROD END
- Ⓑ AP54013 HOSE ASSY 05 x 288' - RF CAP END
- Ⓒ AP4063 HOSE ASSY 04 x 288' - LF ROD END
- Ⓓ AP42093 HOSE ASSY 05 x 276' - LF CAP END
- Ⓔ AP4074 HOSE ASSY 04 x 108' - RR ROD END
- Ⓕ AP42053 HOSE ASSY 05 x 102' - RR CAP END
- Ⓖ AP10566 HOSE ASSY 04 x 102' - LR ROD END
- Ⓗ AP8383 HOSE ASSY 05 x 96' - LR CAP END

NOTE: INSTALLATION MUST CONFORM TO GOOD SHOP PRACTICES, SAE STANDARDS, VIA STANDARDS, AND OTHER APPLICABLE STANDARDS.

NO.	DATE	REVISION
1	16FEB16	CORRECTED ROD/CAP

HWH 1-80 EXIT 267 SOUTH
 RT 1 MOSCOW, IOWA 52760
 SCALE 1:6 DATE 17DEC15 DRAWN BY
 HYD CONN DIAGRAM
 ITB DRAWING NUMBER MP70969