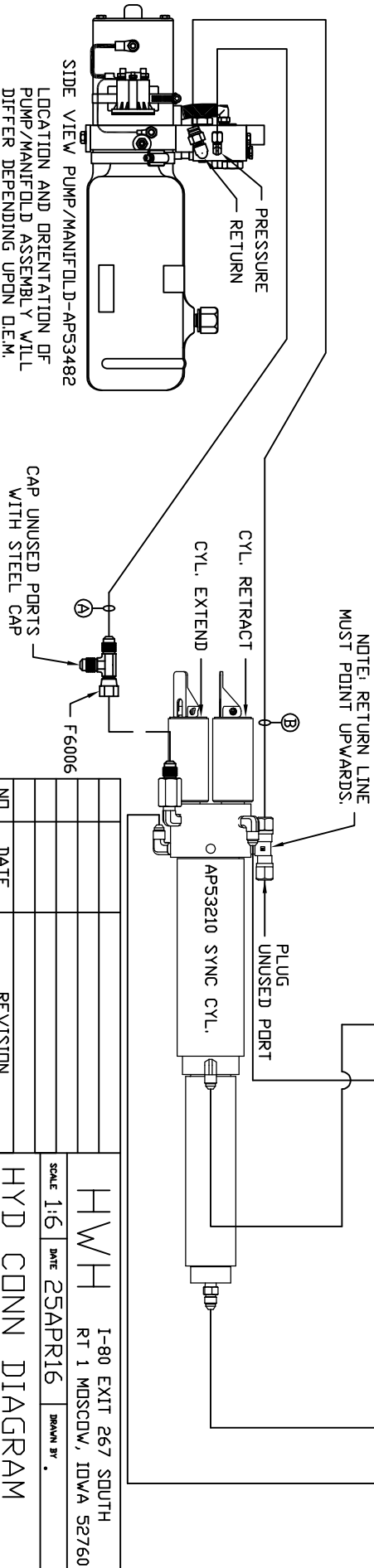


AP56417 HOSE KIT 1 ROOM

- Ⓐ AP5965 HOSE ASSY 04 x 180" PRESSURE
- Ⓑ P5145 RETURN LINE 3/8 x 180" RETURN
- Ⓒ AP49517 HOSE ASSY 03 x 180" ROD END - ALWAYS PRESSURIZED - MUST MAINTAIN EQUAL LENGTH AND DIAMETER
- Ⓓ AP5965 HOSE ASSY 04 x 180" CAP END - MUST MAINTAIN EQUAL LENGTH AND DIAMETER

NOTE: HOSES Ⓒ AND Ⓓ ARE INCLUDED WITH THE ROOM EXTENSION MECHANISM.

- Ⓔ AP24636 HOSE ASSY HW402HP x 84" CAP END - MUST MAINTAIN EQUAL LENGTH AND DIAMETER
- Ⓕ AP24632 HOSE ASSY HW402HP x 48" ROD END - ALWAYS PRESSURIZED - MUST MAINTAIN EQUAL LENGTH AND DIAMETER



NOTE: INSTALLATION MUST CONFORM TO GOOD SHOP PRACTICES, SAE STANDARDS, RVIA STANDARDS, AND OTHER APPLICABLE STANDARDS.

		HWH		1-80 EXIT 267 SOUTH	
				RT 1 MOSCOW, IDWA 52760	
		SCALE 1:6	DATE 25APR16	DRAWN BY .	
		HYD CONN DIAGRAM			
NO.	DATE	REVISION			
THE INFORMATION DISCLOSED ON THIS DRAWING IS CONFIDENTIAL AND MUST NOT BE DISCLOSED OR USED IN ANY MANNER WHICH WILL BE DETRIMENTAL TO THE HWH CORPORATION					
FACTORY TRANSPORTS				DRAWING NUMBER MP70990	