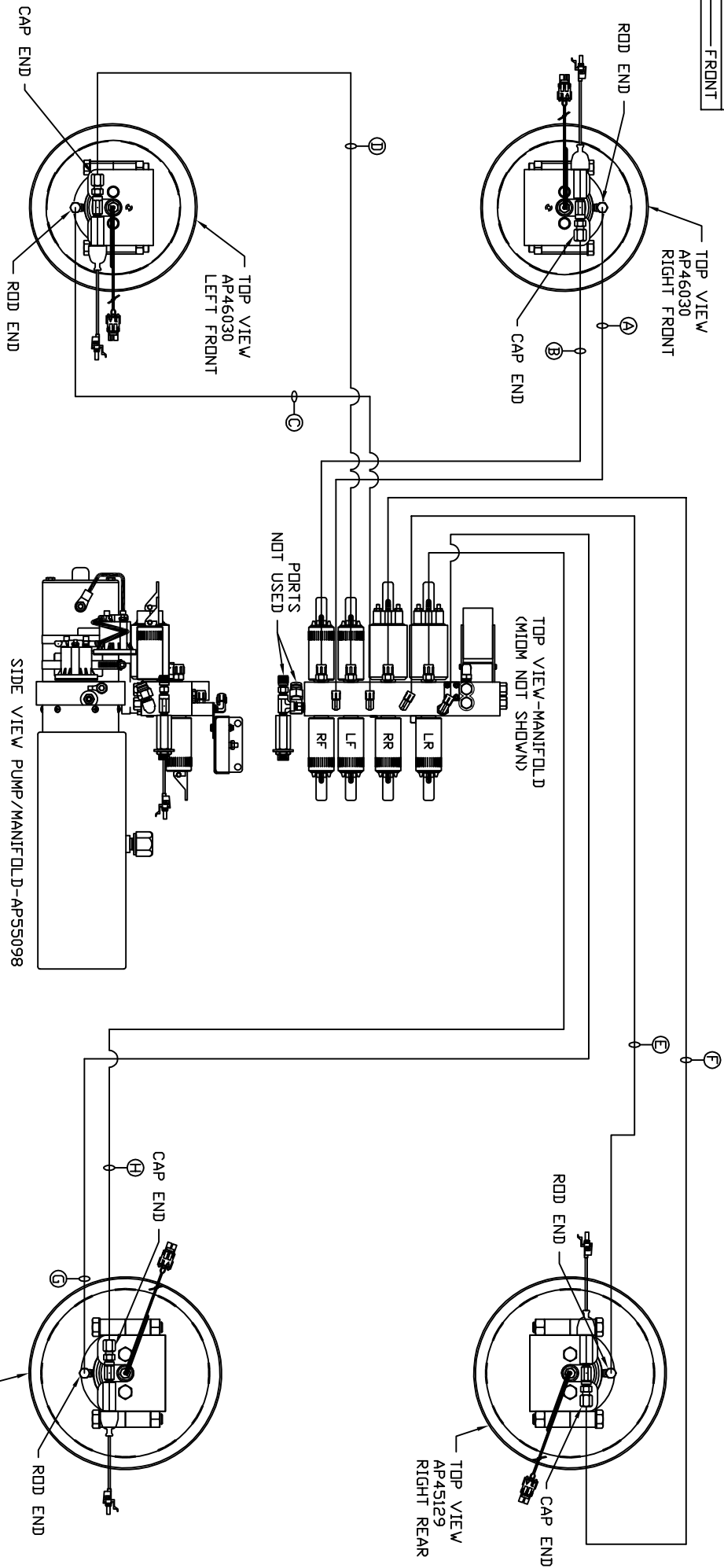


ORIENTATION  
FRONT



- Ⓐ AP7385 HOSE ASSY 04 x 252' - RF ROD END
- Ⓑ AP54012 HOSE ASSY 05 x 252' - RF CAP END
- Ⓒ AP6115 HOSE ASSY 04 x 168' - LF ROD END
- Ⓓ AP23233 HOSE ASSY 05 x 168' - LF CAP END
- Ⓔ AP6216 HOSE ASSY 04 x 264' - RR ROD END
- Ⓕ AP24985 HOSE ASSY 05 x 264' - RR CAP END
- Ⓖ AP6115 HOSE ASSY 04 x 168' - LR ROD END
- Ⓗ AP23233 HOSE ASSY 05 x 168' - LR CAP END

NOTE: INSTALLATION MUST CONFORM TO GOOD SHOP PRACTICES, SAE STANDARDS, RVIA STANDARDS, AND OTHER APPLICABLE STANDARDS.

LEVELING SYSTEM: AP56726

NO.	DATE	REVISION

THE INFORMATION DISCLOSED ON THIS DRAWING IS CONFIDENTIAL AND MUST NOT BE DISCLOSED OR USED IN ANY MANNER WHICH WILL BE DETRIMENTAL TO THE HWH CORPORATION

SCALE 1:6 DATE 07JUN16 DRAWN BY .

HWH 1-80 EXIT 267 SOUTH  
RT 1 MOSCOW, IOWA 52760

HYD CONN DIAGRAM

FARBER DRAWING NUMBER  
MP71005