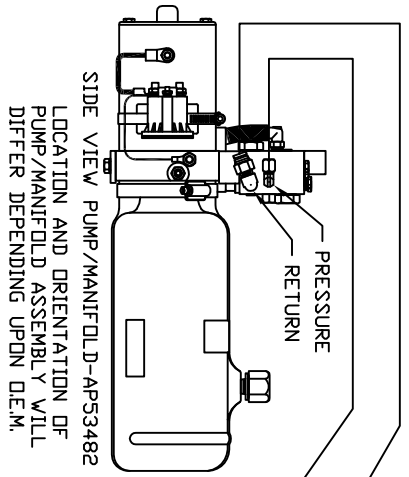
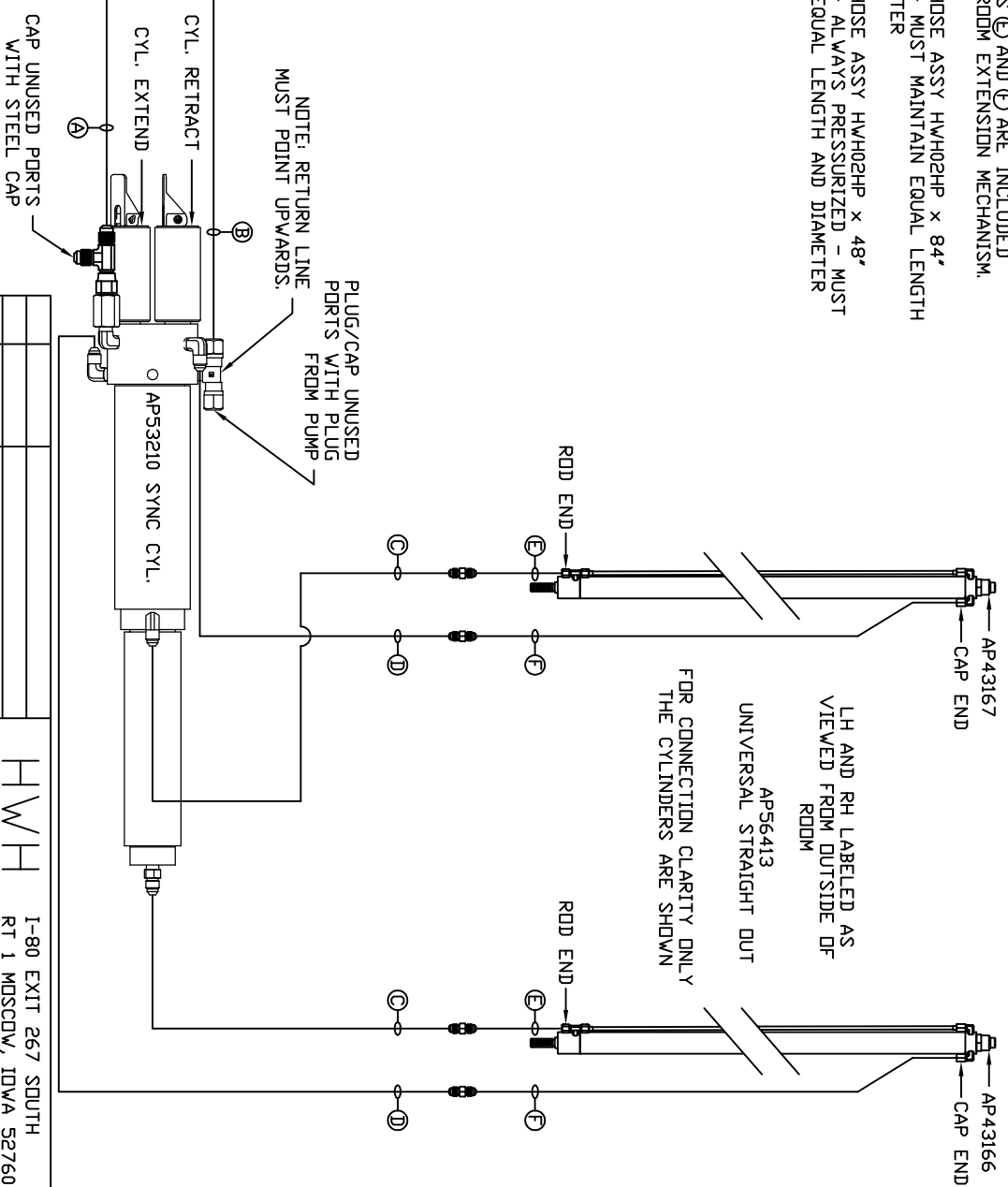


- AP56940 HOSE KIT 1RM MILNER
- Ⓐ AP4064 HOSE ASSY 04 x 300' PRESSURE
- Ⓑ P4479 TUBING NYLON 3/8" x 360' RETURN
- Ⓒ AP49517 HOSE ASSY 03 x 180' RDD END - ALWAYS PRESSURIZED - MUST MAINTAIN EQUAL LENGTH AND DIAMETER
- Ⓓ AP5965 HOSE ASSY 04 x 180' CAP END - MUST MAINTAIN EQUAL LENGTH AND DIAMETER

- NOTE: HOSES Ⓒ AND Ⓓ ARE INCLUDED WITH THE RDD EXTENSION MECHANISM.
- Ⓔ AP24636 HOSE ASSY HWH02HP x 84' CAP END - MUST MAINTAIN EQUAL LENGTH AND DIAMETER
 - Ⓕ AP24632 HOSE ASSY HWH02HP x 48' RDD END - ALWAYS PRESSURIZED - MUST MAINTAIN EQUAL LENGTH AND DIAMETER



SIDE VIEW PUMP/MANIFOLD-AP53482
LOCATION AND ORIENTATION OF PUMP/MANIFOLD ASSEMBLY WILL DIFFER DEPENDING UPON OEM.



NOTE: INSTALLATION MUST CONFORM TO GOOD SHOP PRACTICES, SAE STANDARDS, RVIA STANDARDS, AND OTHER APPLICABLE STANDARDS.

NO.	DATE	REVISION

HWH 1-80 EXIT 267 SOUTH
 RT 1 MOSCOW, IOWA 52760
 SCALE 1:6 DATE 15AUG16 DRAWN BY .
 HYD CONN DIAGRAM
 ZANETTI TRAILERS DRAWING NUMBER
 MP71021