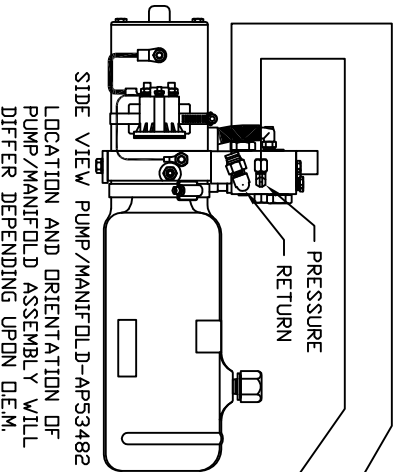


AP56942 HOSE KIT 1RM DUPLICOR

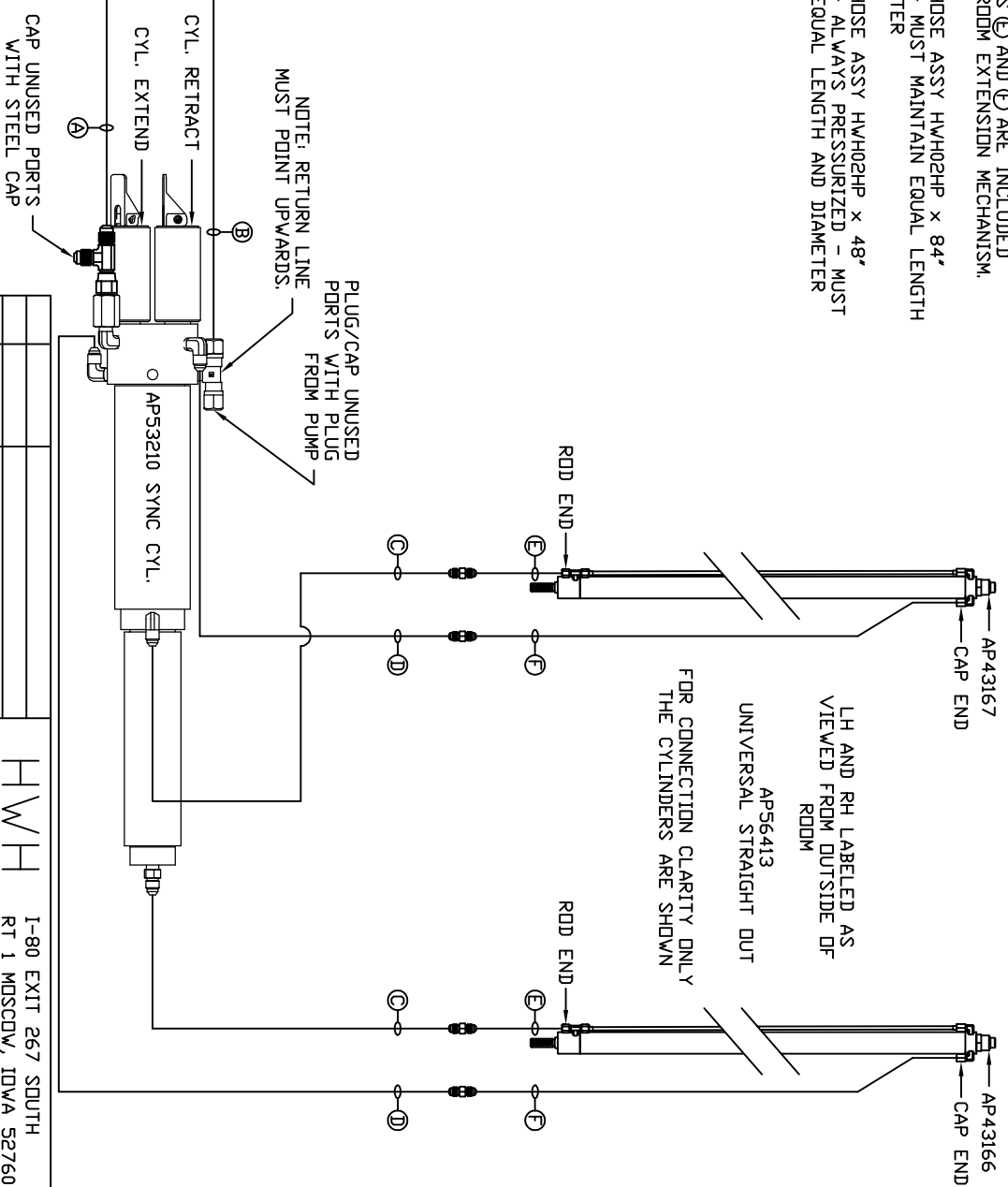
- Ⓐ AP6218 HOSE ASSY 04 x 480" PRESSURE
- Ⓑ P29287 TUBING NYLON 3/8" x 480" RETURN
- Ⓒ AP51638 HOSE ASSY 03 x 300" RDD END - ALWAYS PRESSURIZED - MUST MAINTAIN EQUAL LENGTH AND DIAMETER
- Ⓓ AP4064 HOSE ASSY 04 x 300" CAP END - MUST MAINTAIN EQUAL LENGTH AND DIAMETER

NOTE: HOSES Ⓒ AND Ⓓ ARE INCLUDED WITH THE RDDM EXTENSION MECHANISM.

- Ⓔ AP24636 HOSE ASSY HWH02HP x 84" CAP END - MUST MAINTAIN EQUAL LENGTH AND DIAMETER
- Ⓕ AP24632 HOSE ASSY HWH02HP x 48" RDD END - ALWAYS PRESSURIZED - MUST MAINTAIN EQUAL LENGTH AND DIAMETER



SIDE VIEW PUMP/MANIFOLD-AP53482
LOCATION AND ORIENTATION OF PUMP/MANIFOLD ASSEMBLY WILL DIFFER DEPENDING UPON OEM.



NOTE: INSTALLATION MUST CONFORM TO GOOD SHOP PRACTICES, SAE STANDARDS, RVIA STANDARDS, AND OTHER APPLICABLE STANDARDS.

NO.	DATE	REVISION

HWH 1-80 EXIT 267 SOUTH
 RT 1 MOSCOW, IDWA 52760
 SCALE 1:6 DATE 15AUG16 DRAWN BY .
 HYD CONN DIAGRAM
 ZANETTI TRAILERS DRAWING NUMBER
 MP71022

THE INFORMATION DISCLOSED ON THIS DRAWING IS CONFIDENTIAL AND MUST NOT BE DISCLOSED OR USED IN ANY MANNER WHICH WILL BE DETRIMENTAL TO THE HWH CORPORATION