

SIDE VIEW PUMP/MANIFOLD-AP53482

LOCATION AND ORIENTATION OF
PUMP/MANIFOLD ASSEMBLY WILL
DIFFER DEPENDING UPON O.E.M.

NOTE: INSTALLATION MUST CONFORM TO GOOD SHOP PRACTICES, SAE STANDARDS, RVIA STANDARDS, AND OTHER APPLICABLE STANDARDS.

			HWH I-80 EXIT 267 SOUTH RT 1 MOSCOW, IOWA 52760	
			SCALE 1:6	DATE 31AUG16
			DRAWN BY .	
			HYD CONN DIAGRAM	
NO.	DATE	REVISION		
THE INFORMATION DISCLOSED ON THIS DRAWING IS CONFIDENTIAL AND MUST NOT BE DISCLOSED OR USED IN ANY MANNER WHICH WILL BE DETRIMENTAL TO THE HWH CORPORATION			TURN KEY IND.	DRAWING NUMBER MP71023 A/C

- Ⓐ AP5215 HOSE ASSY 04 × 78" PRESSURE
- Ⓑ P55310 3/8" OD × 72" NYLON TUBING RETURN
- Ⓒ AP50847 HOSE ASSY 03 × 204" ROD END - ALWAYS PRESSURIZED - MUST MAINTAIN EQUAL LENGTH AND DIAMETER
- Ⓓ AP4065 HOSE ASSY 04 × 156" CAP END - MUST MAINTAIN EQUAL LENGTH AND DIAMETER
- Ⓔ AP24632 HOSE ASSY HWH02HP × 48" ROD END - ALWAYS PRESSURIZED - MUST MAINTAIN EQUAL LENGTH AND DIAMETER
- Ⓕ AP24818 HOSE ASSY HWH02HP × 86" CAP END - MUST MAINTAIN EQUAL LENGTH AND DIAMETER
- Ⓖ AP1412 HOSE ASSY 04 × 84" CAP END (LIFT)
- Ⓙ AP5352 HOSE ASSY 04 × 96" CAP END (ROOM)
- Ⓚ AP48866 HOSE ASSY 03 × 36" CAP END (ROOM)

- Ⓛ AP48866 HOSE ASSY 03 × 36" ROD END (LIFT) ALWAYS PRESSURIZED
- Ⓜ AP4059 HOSE ASSY 04 × 36" CAP END (LIFT)
- Ⓝ AP50671 HOSE ASSY 03 × 84" ROD END - ALWAYS PRESSURIZED (LIFT)
- Ⓟ AP49246 HOSE ASSY 03 × 156" ROD END (LIFT) ALWAYS PRESSURIZED
- Ⓠ AP4159 HOSE ASSY 04 × 72" CAP END LIFT
- Ⓡ AP49246 HOSE ASSY 03 × 156" ROD END (LIFT) ALWAYS PRESSURIZED
- Ⓢ AP4159 HOSE ASSY 04 × 72" CAP END LIFT

AP57030 HOSE KIT 2 ROOM

AP43167
CAP END

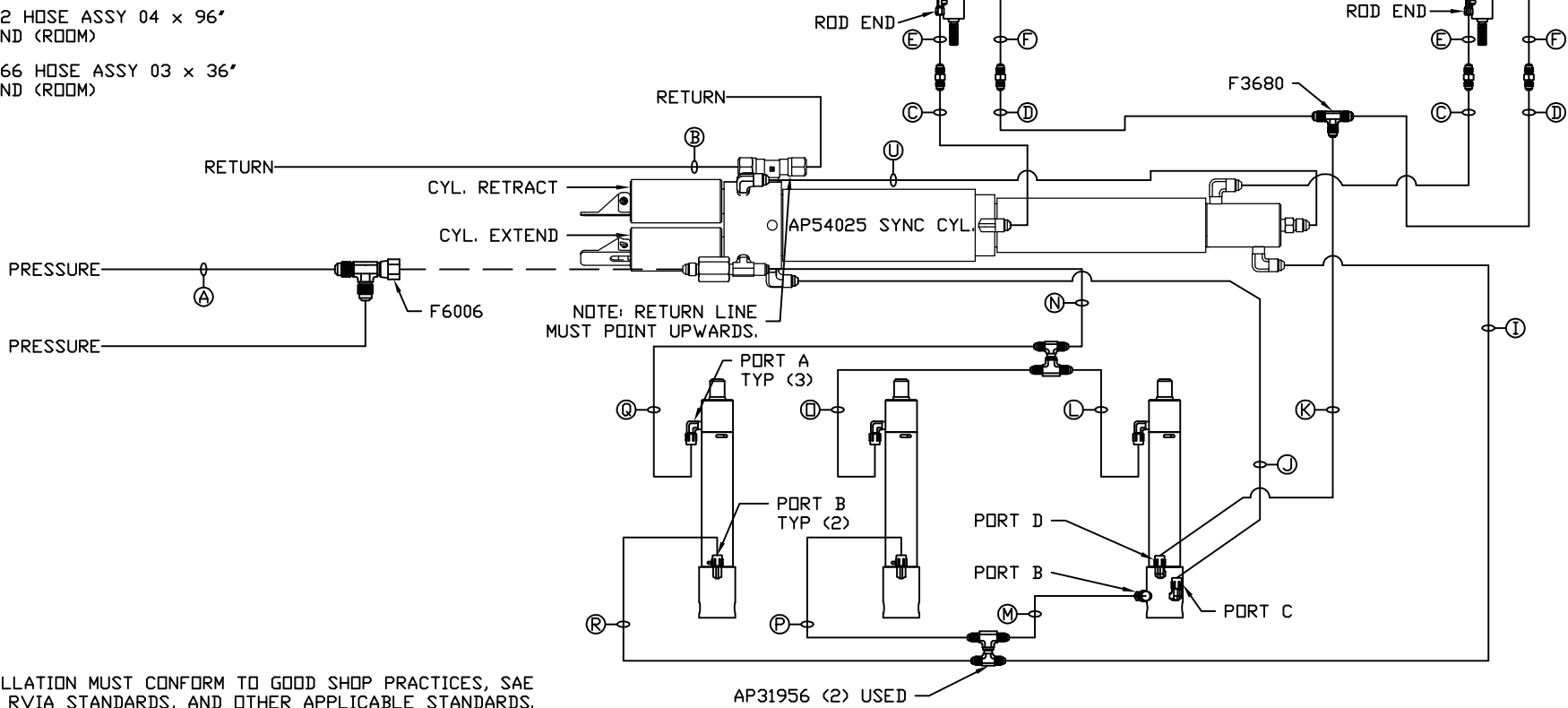
AP43166
CAP END

LH AND RH LABELED AS VIEWED FROM OUTSIDE OF ROOM

AP54740
UNIVERSAL PLATFORM LEVEL OUT ROOM #1

NOTE: HOSES Ⓔ AND Ⓕ ARE INCLUDED WITH THE ROOM EXTENSION MECHANISM.

NOTE: HOSE Ⓛ IS INCLUDED WITH THE SYNC. CYLINDER.

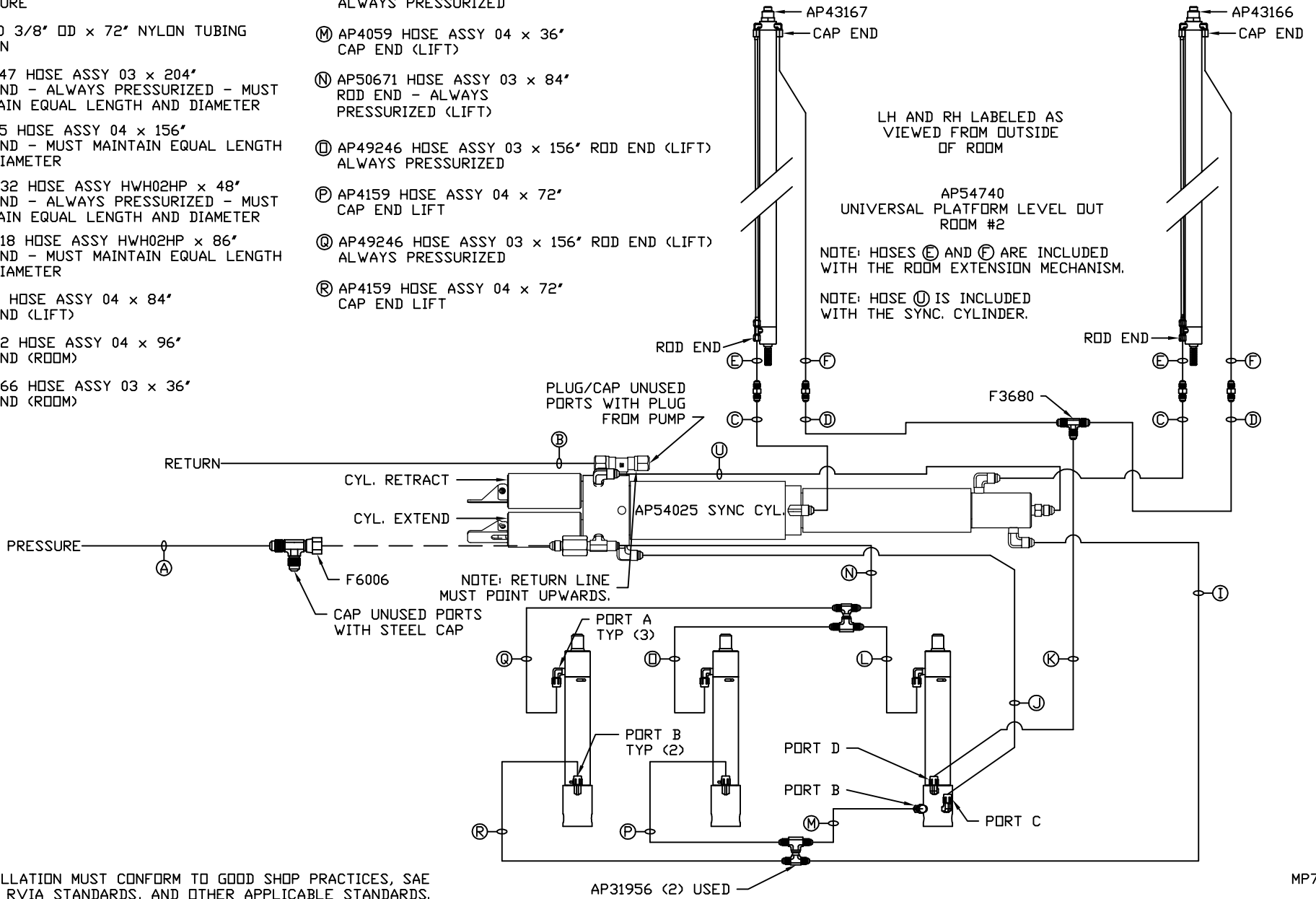


NOTE: INSTALLATION MUST CONFORM TO GOOD SHOP PRACTICES, SAE STANDARDS, RVIA STANDARDS, AND OTHER APPLICABLE STANDARDS.

MP71023 B/C
31AUG16

- (A) AP5215 HOSE ASSY 04 x 78" PRESSURE
- (B) P55310 3/8" OD x 72" NYLON TUBING RETURN
- (C) AP50847 HOSE ASSY 03 x 204" ROD END - ALWAYS PRESSURIZED - MUST MAINTAIN EQUAL LENGTH AND DIAMETER
- (D) AP4065 HOSE ASSY 04 x 156" CAP END - MUST MAINTAIN EQUAL LENGTH AND DIAMETER
- (E) AP24632 HOSE ASSY HWH02HP x 48" ROD END - ALWAYS PRESSURIZED - MUST MAINTAIN EQUAL LENGTH AND DIAMETER
- (F) AP24818 HOSE ASSY HWH02HP x 86" CAP END - MUST MAINTAIN EQUAL LENGTH AND DIAMETER
- (I) AP1412 HOSE ASSY 04 x 84" CAP END (LIFT)
- (J) AP5352 HOSE ASSY 04 x 96" CAP END (ROOM)
- (K) AP48866 HOSE ASSY 03 x 36" CAP END (ROOM)

- (L) AP48866 HOSE ASSY 03 x 36" ROD END (LIFT) ALWAYS PRESSURIZED
- (M) AP4059 HOSE ASSY 04 x 36" CAP END (LIFT)
- (N) AP50671 HOSE ASSY 03 x 84" ROD END - ALWAYS PRESSURIZED (LIFT)
- (O) AP49246 HOSE ASSY 03 x 156" ROD END (LIFT) ALWAYS PRESSURIZED
- (P) AP4159 HOSE ASSY 04 x 72" CAP END LIFT
- (Q) AP49246 HOSE ASSY 03 x 156" ROD END (LIFT) ALWAYS PRESSURIZED
- (R) AP4159 HOSE ASSY 04 x 72" CAP END LIFT



NOTE: INSTALLATION MUST CONFORM TO GOOD SHOP PRACTICES, SAE STANDARDS, RVIA STANDARDS, AND OTHER APPLICABLE STANDARDS.

MP71023 C/C
31AUG16