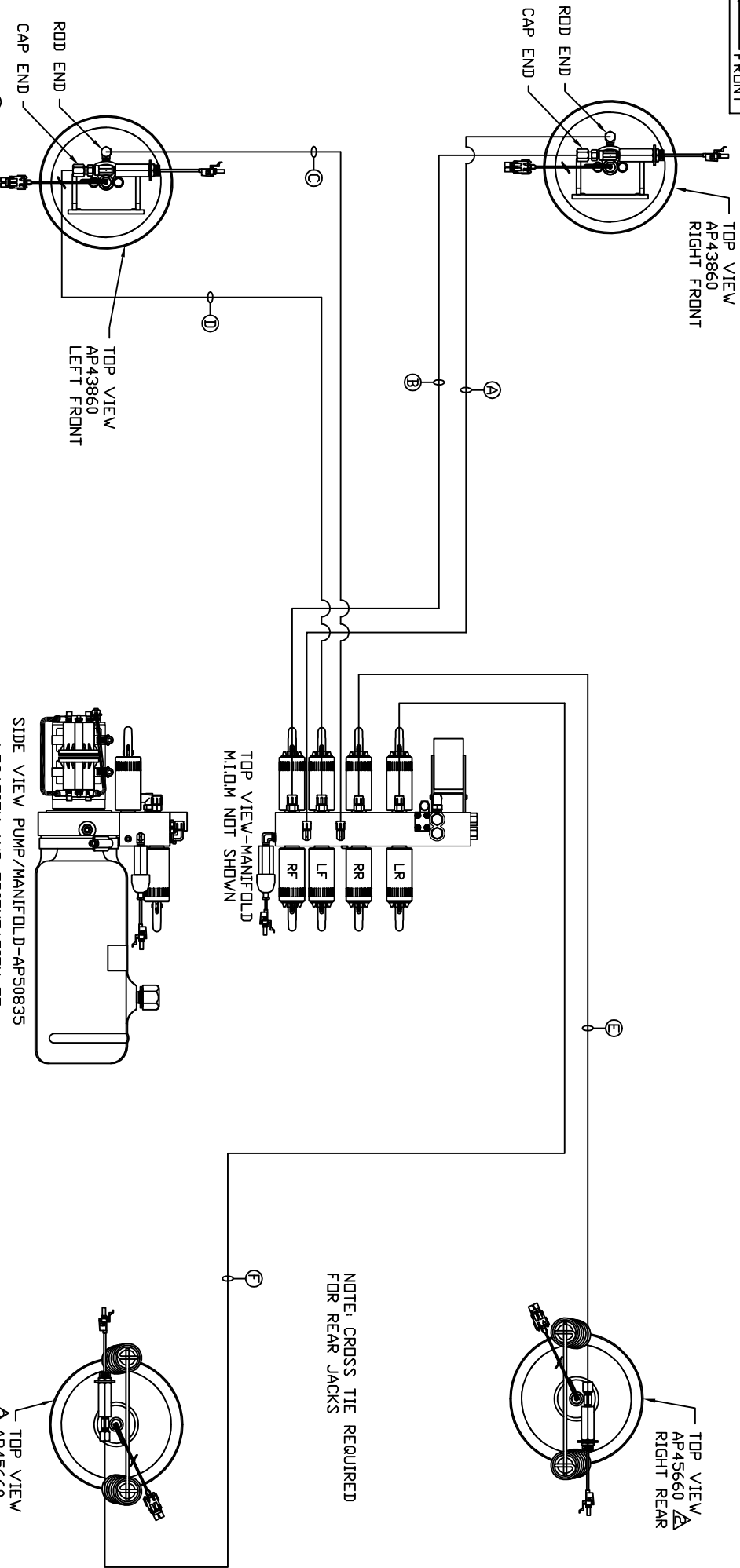


ORIENTATION
FRONT



- A AP4062 HOSE ASSY 04 x 132' - RF RDD END WAS AP1412 HOSE ASSY 04 x 84'
- B AP42054 HOSE ASSY 05 x 108' - RF CAP END WAS AP42057 HOSE ASSY 05 x 72'
- C AP1412 HOSE ASSY 04 x 84' - LF RDD END WAS AP5215 HOSE ASSY 04 x 78'
- D AP42019 HOSE ASSY 05 x 66' - LF CAP END WAS AP42019 HOSE ASSY 05 x 66'
- E AP6218 HOSE ASSY 04 x 480' - RR CAP END WAS AP4164 HOSE ASSY 04 x 384'
- F AP4313 HOSE ASSY 04 x 396' - LR CAP END WAS AP5216 HOSE ASSY 04 x 312'

NOTE: INSTALLATION MUST CONFORM TO GOOD SHOP PRACTICES, SAE STANDARDS, RVIA STANDARDS, AND OTHER APPLICABLE STANDARDS.

LEVELING SYSTEM: AP57126

NO.	DATE	REVISION
1	14SEP17	UPDATED HOSES
2		
3		
4		
5		
6		

THE INFORMATION DISCLOSED ON THIS DRAWING IS CONFIDENTIAL AND MUST NOT BE DISCLOSED OR USED IN ANY MANNER WHICH WILL BE DETRIMENTAL TO THE HWH CORPORATION

SCALE 1:6 DATE 17NOV16 DRAWN BY .

HWH 1-80 EXIT 267 SOUTH RT 1 MOSCOW, IOWA 52760

HYD CONN DIAGRAM

GENESIS SUPREME DRAWING NUMBER MP71034