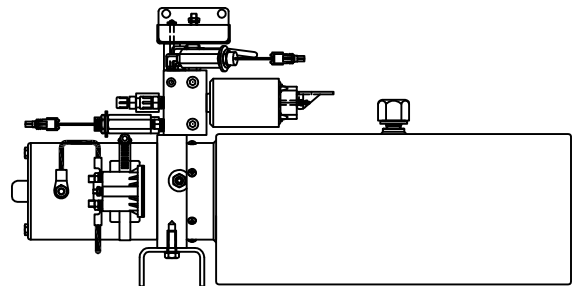
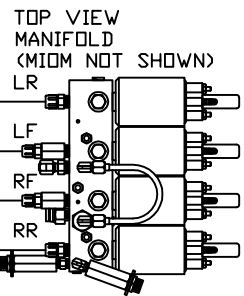
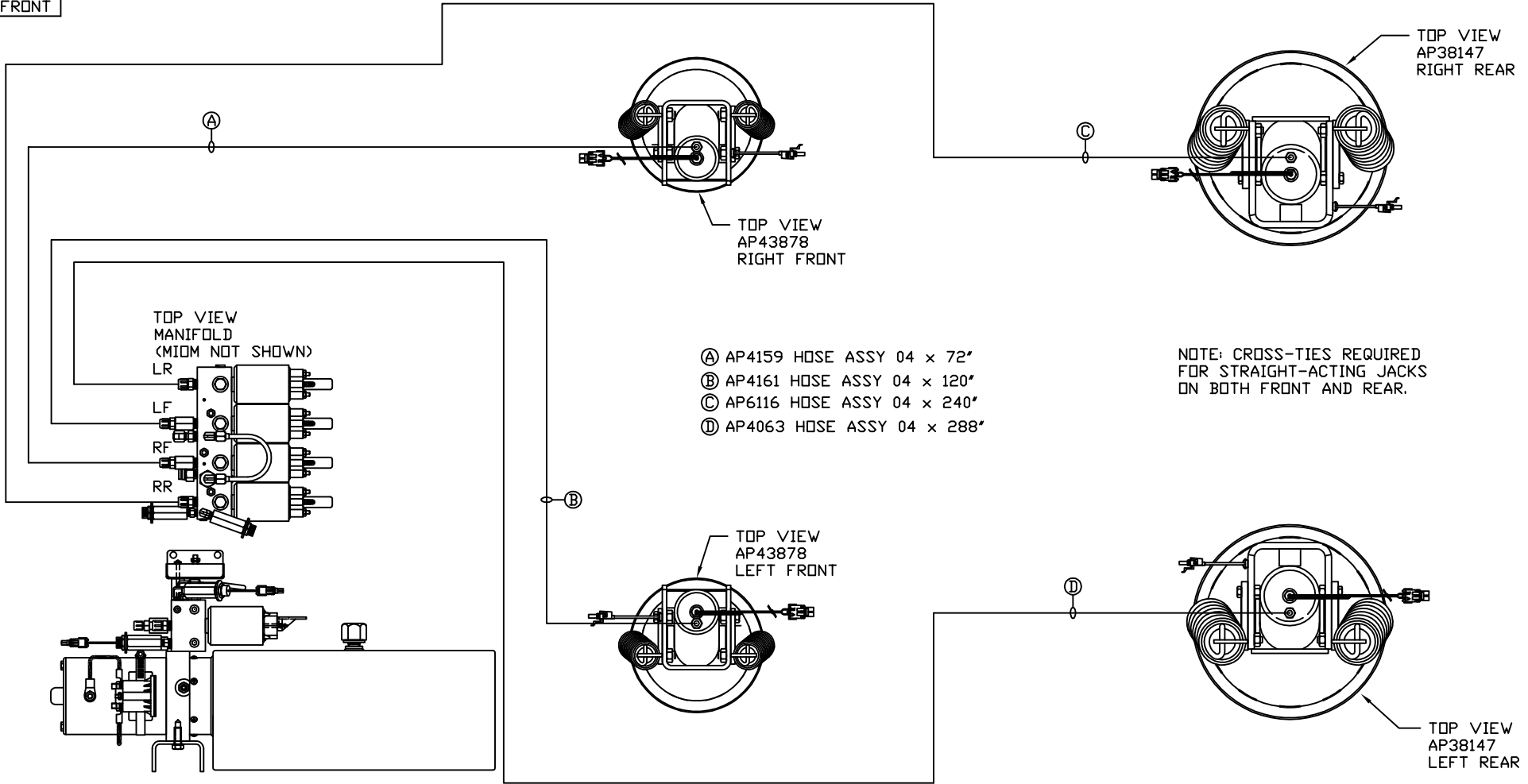


ORIENTATION
← FRONT



SIDE VIEW PUMP/MANIFOLD-AP53196
LOCATION AND ORIENTATION OF
PUMP/MANIFOLD ASSEMBLY WILL
DIFFER DEPENDING UPON O.E.M.

- Ⓐ AP4159 HOSE ASSY 04 x 72"
- Ⓑ AP4161 HOSE ASSY 04 x 120"
- Ⓒ AP6116 HOSE ASSY 04 x 240"
- Ⓓ AP4063 HOSE ASSY 04 x 288"

NOTE: CROSS-TIES REQUIRED
FOR STRAIGHT-ACTING JACKS
ON BOTH FRONT AND REAR.

NOTE: INSTALLATION MUST CONFORM TO GOOD SHOP PRACTICES, SAE STANDARDS, RVIA STANDARDS, AND OTHER APPLICABLE STANDARDS.

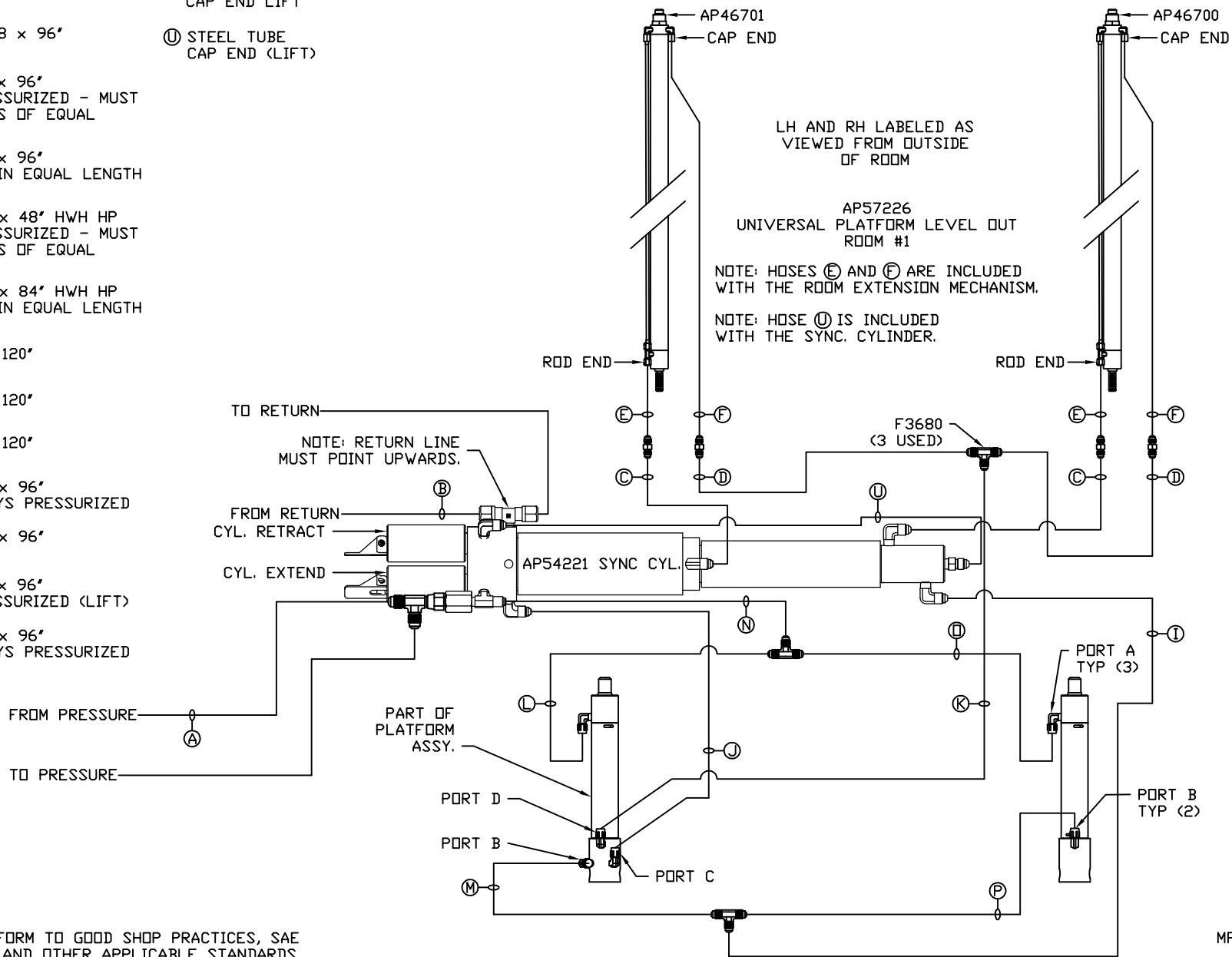
LEVELING SYSTEM: AP57203

		HWH I-80 EXIT 267 SOUTH RT 1 MOSCOW, IOWA 52760	
		SCALE 1:6	DATE 18NOV16
		DRAWN BY .	
		HYD CONN DIAGRAM	
NO.	DATE	REVISION	
		THE INFORMATION DISCLOSED ON THIS DRAWING IS CONFIDENTIAL AND MUST NOT BE DISCLOSED OR USED IN ANY MANNER WHICH WILL BE DETRIMENTAL TO THE HWH CORPORATION	
		MATTHEWS	DRAWING NUMBER MP71035 A/B

- Ⓐ AP50766 HOSE ASSY 03 x 96" PRESSURE
- Ⓑ P5254 TUBING NYLON 3/8 x 96" RETURN
- Ⓒ AP50766 HOSE ASSY 03 x 96" ROD END - ALWAYS PRESSURIZED - MUST BE HIGH PRESSURE HOSES OF EQUAL LENGTH AND DIAMETER
- Ⓓ AP50766 HOSE ASSY 03 x 96" CAP END - MUST MAINTAIN EQUAL LENGTH AND DIAMETER
- Ⓔ AP24632 HOSE ASSY 02 x 48" HWH HP ROD END - ALWAYS PRESSURIZED - MUST BE HIGH PRESSURE HOSES OF EQUAL LENGTH AND DIAMETER
- Ⓕ AP24636 HOSE ASSY 02 x 84" HWH HP CAP END - MUST MAINTAIN EQUAL LENGTH AND DIAMETER
- Ⓖ AP4161 HOSE ASSY 04 x 120" CAP END (LIFT)
- Ⓙ AP4161 HOSE ASSY 04 x 120" CAP END (ROOM)
- Ⓚ AP4161 HOSE ASSY 04 x 120" CAP END (ROOM)
- Ⓛ AP50766 HOSE ASSY 03 x 96" ROD END (LIFT) - ALWAYS PRESSURIZED
- Ⓜ AP50766 HOSE ASSY 03 x 96" CAP END (LIFT)
- Ⓝ AP50766 HOSE ASSY 03 x 96" ROD END - ALWAYS PRESSURIZED (LIFT)
- Ⓟ AP50766 HOSE ASSY 03 x 96" ROD END (LIFT) - ALWAYS PRESSURIZED

- Ⓟ AP4161 HOSE ASSY 04 x 120" CAP END LIFT
- Ⓡ STEEL TUBE CAP END (LIFT)

AP57206 HOSE KIT ROOM 1 / UPLD



NOTE: INSTALLATION MUST CONFORM TO GOOD SHOP PRACTICES, SAE STANDARDS, RVIA STANDARDS, AND OTHER APPLICABLE STANDARDS.

MP71035 B/B
18NOV16