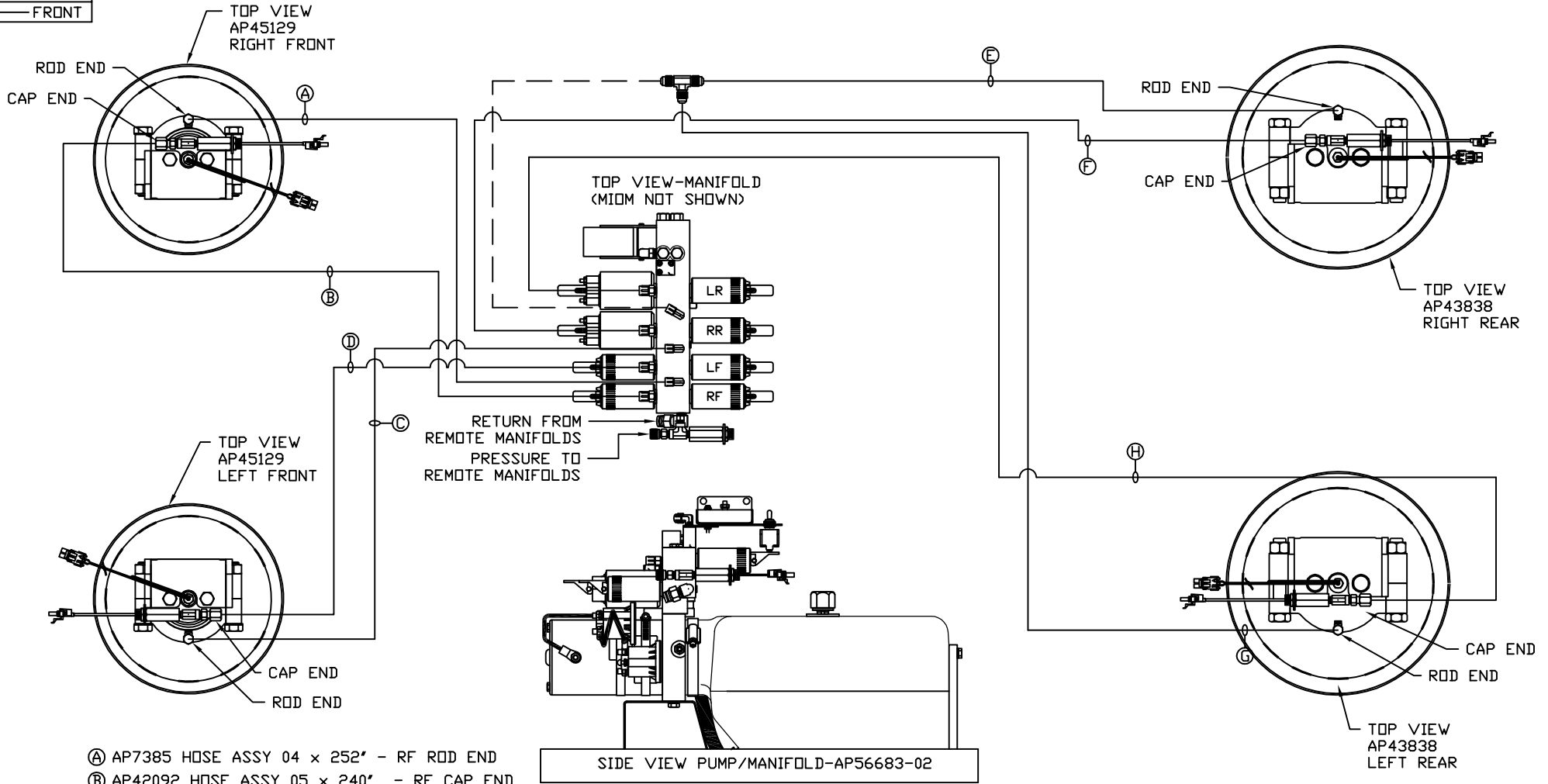


ORIENTATION
← FRONT



- Ⓐ AP7385 HOSE ASSY 04 x 252' - RF ROD END
- Ⓑ AP42092 HOSE ASSY 05 x 240' - RF CAP END
- Ⓒ AP2465 HOSE ASSY 04 x 348' - LF ROD END
- Ⓓ AP54015 HOSE ASSY 05 x 336' - LF CAP END
- Ⓔ AP4162 HOSE ASSY 04 x 192' - RR ROD END
- Ⓕ AP19013 HOSE ASSY 05 x 180' - RR CAP END
- Ⓖ AP4063 HOSE ASSY 04 x 288' - LR ROD END
- Ⓗ AP42093 HOSE ASSY 05 x 276' - LR CAP END

NOTE: INSTALLATION MUST CONFORM TO GOOD SHOP PRACTICES, SAE STANDARDS, RVIA STANDARDS, AND OTHER APPLICABLE STANDARDS.

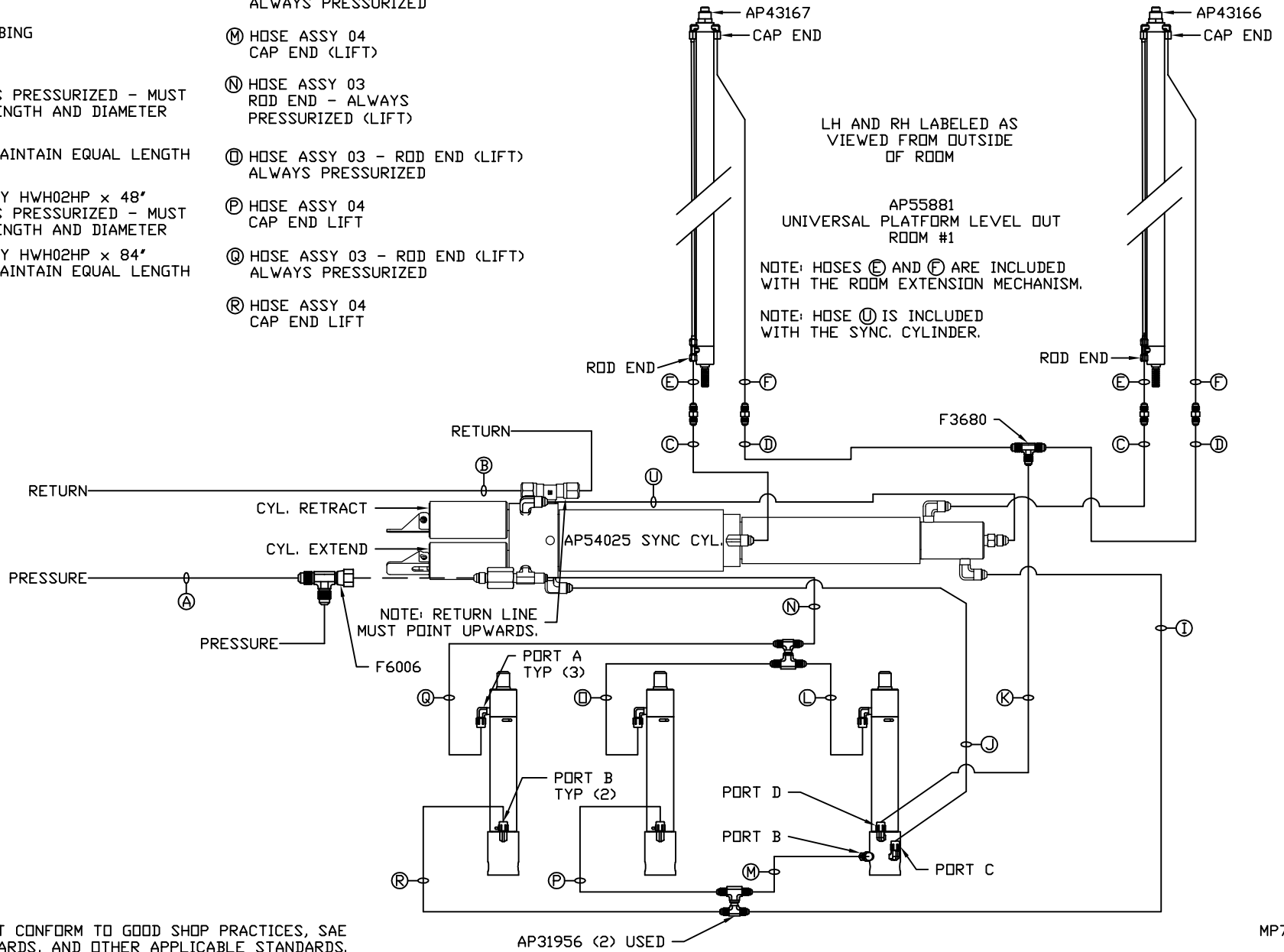
SIDE VIEW PUMP/MANIFOLD-AP56683-02

LEVELING SYSTEM: AP57052

		HWH I-80 EXIT 267 SOUTH RT 1 MOSCOW, IOWA 52760	
		SCALE 1:6	DATE 01DEC17
		DRAWN BY .	
HYD CONN DIAGRAM			
NO. DATE REVISION		DRAWING NUMBER	
THE INFORMATION DISCLOSED ON THIS DRAWING IS CONFIDENTIAL AND MUST NOT BE DISCLOSED OR USED IN ANY MANNER WHICH WILL BE DETRIMENTAL TO THE HWH CORPORATION		ITB MP71036 A/D	

- (A) HOSE ASSY 04
PRESSURE
- (B) 3/8" OD NYLON TUBING
RETURN
- (C) HOSE ASSY 03
ROD END - ALWAYS PRESSURIZED - MUST
MAINTAIN EQUAL LENGTH AND DIAMETER
- (D) HOSE ASSY 04
CAP END - MUST MAINTAIN EQUAL LENGTH
AND DIAMETER
- (E) AP24632 HOSE ASSY HWH02HP x 48"
ROD END - ALWAYS PRESSURIZED - MUST
MAINTAIN EQUAL LENGTH AND DIAMETER
- (F) AP24636 HOSE ASSY HWH02HP x 84"
CAP END - MUST MAINTAIN EQUAL LENGTH
AND DIAMETER
- (I) HOSE ASSY 04
CAP END (LIFT)
- (J) HOSE ASSY 04
CAP END (ROOM)
- (K) HOSE ASSY 03
CAP END (ROOM)

- (L) HOSE ASSY 03 - ROD END (LIFT)
ALWAYS PRESSURIZED
- (M) HOSE ASSY 04
CAP END (LIFT)
- (N) HOSE ASSY 03
ROD END - ALWAYS
PRESSURIZED (LIFT)
- (O) HOSE ASSY 03 - ROD END (LIFT)
ALWAYS PRESSURIZED
- (P) HOSE ASSY 04
CAP END LIFT
- (Q) HOSE ASSY 03 - ROD END (LIFT)
ALWAYS PRESSURIZED
- (R) HOSE ASSY 04
CAP END LIFT

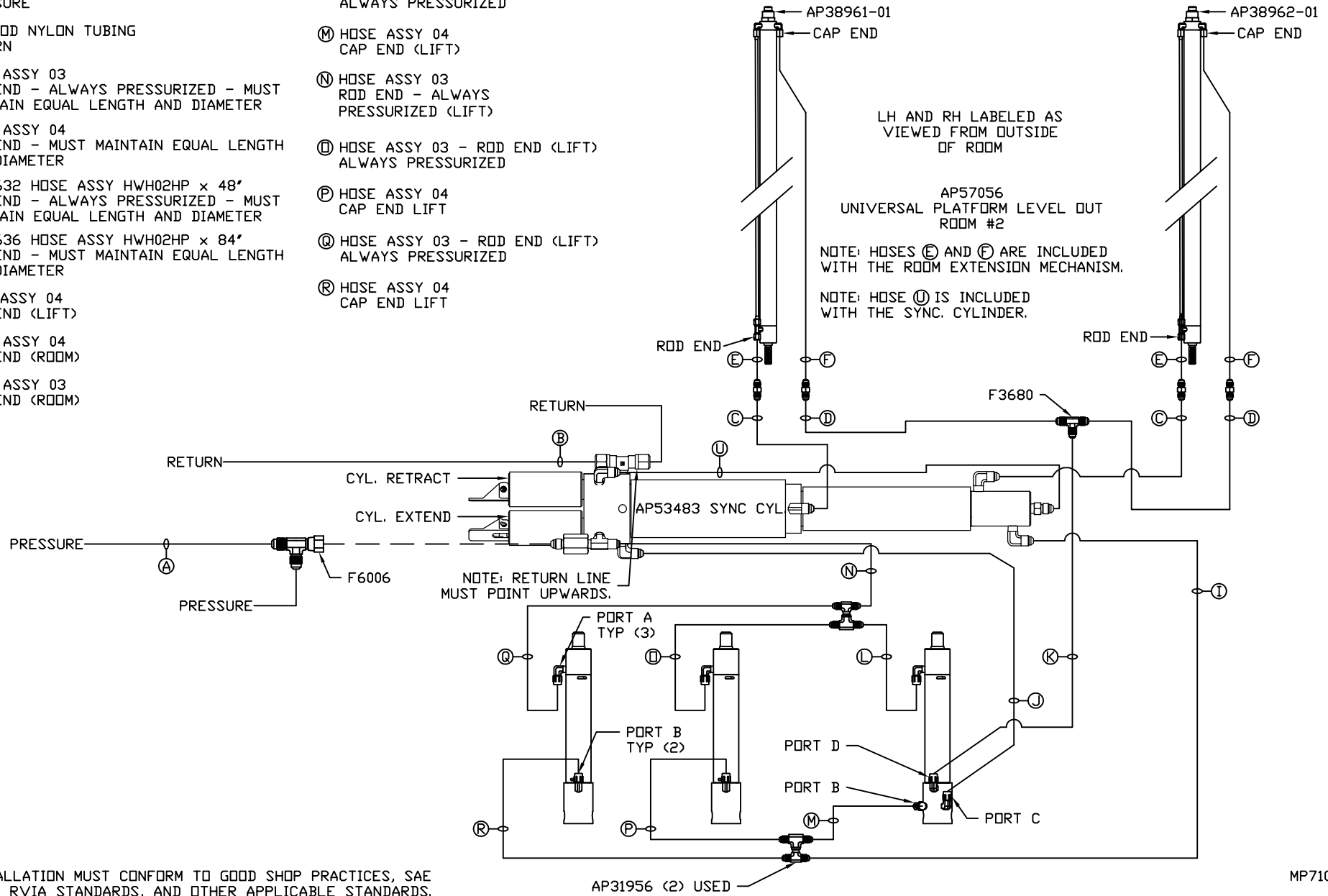


NOTE: INSTALLATION MUST CONFORM TO GOOD SHOP PRACTICES, SAE STANDARDS, RVIA STANDARDS, AND OTHER APPLICABLE STANDARDS.

MP71036 B/D
01DEC17

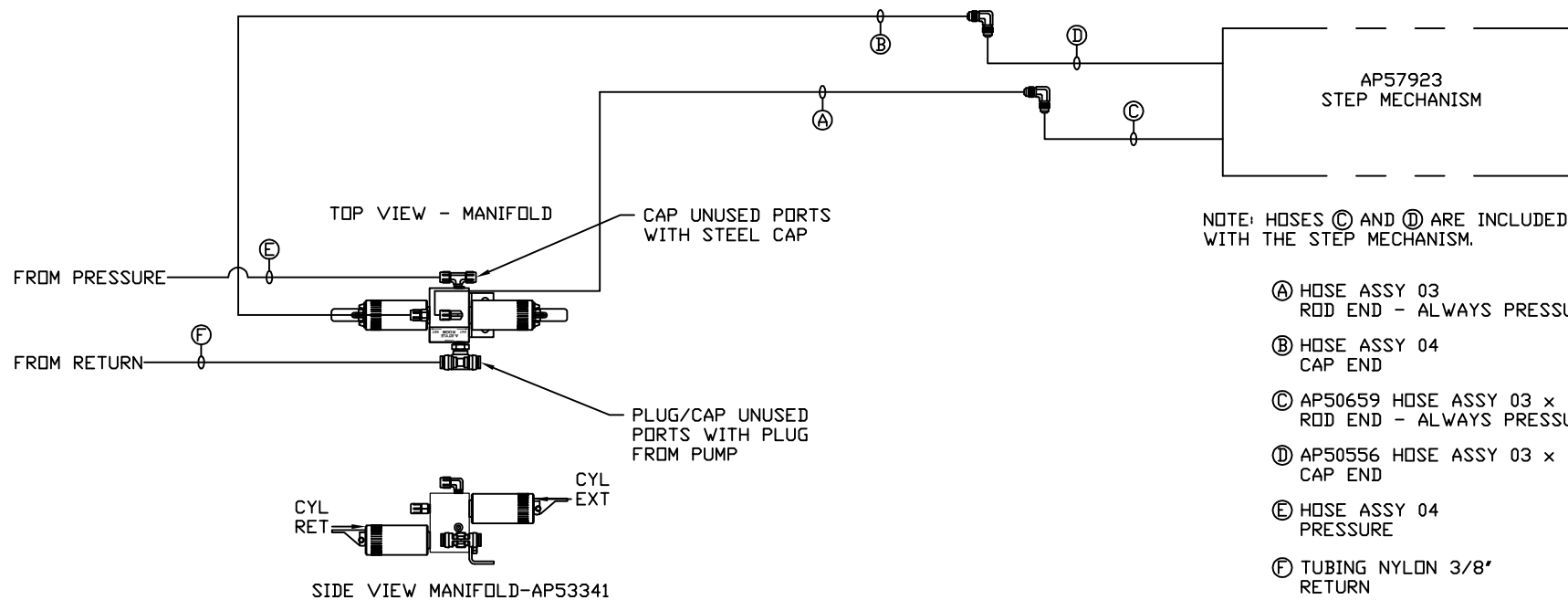
- (A) HOSE ASSY 04
PRESSURE
- (B) 3/8" OD NYLON TUBING
RETURN
- (C) HOSE ASSY 03
ROD END - ALWAYS PRESSURIZED - MUST
MAINTAIN EQUAL LENGTH AND DIAMETER
- (D) HOSE ASSY 04
CAP END - MUST MAINTAIN EQUAL LENGTH
AND DIAMETER
- (E) AP24632 HOSE ASSY HWH02HP x 48"
ROD END - ALWAYS PRESSURIZED - MUST
MAINTAIN EQUAL LENGTH AND DIAMETER
- (F) AP24636 HOSE ASSY HWH02HP x 84"
CAP END - MUST MAINTAIN EQUAL LENGTH
AND DIAMETER
- (I) HOSE ASSY 04
CAP END (LIFT)
- (J) HOSE ASSY 04
CAP END (ROOM)
- (K) HOSE ASSY 03
CAP END (ROOM)

- (L) HOSE ASSY 03 - ROD END (LIFT)
ALWAYS PRESSURIZED
- (M) HOSE ASSY 04
CAP END (LIFT)
- (N) HOSE ASSY 03
ROD END - ALWAYS
PRESSURIZED (LIFT)
- (O) HOSE ASSY 03 - ROD END (LIFT)
ALWAYS PRESSURIZED
- (P) HOSE ASSY 04
CAP END LIFT
- (Q) HOSE ASSY 03 - ROD END (LIFT)
ALWAYS PRESSURIZED
- (R) HOSE ASSY 04
CAP END LIFT



NOTE: INSTALLATION MUST CONFORM TO GOOD SHOP PRACTICES, SAE STANDARDS, RVIA STANDARDS, AND OTHER APPLICABLE STANDARDS.

MP71036 C/D
01DEC17



NOTE: INSTALLATION MUST CONFORM TO GOOD SHOP PRACTICES, SAE STANDARDS, RVIA STANDARDS, AND OTHER APPLICABLE STANDARDS.

MP71036 D/D
01DEC17