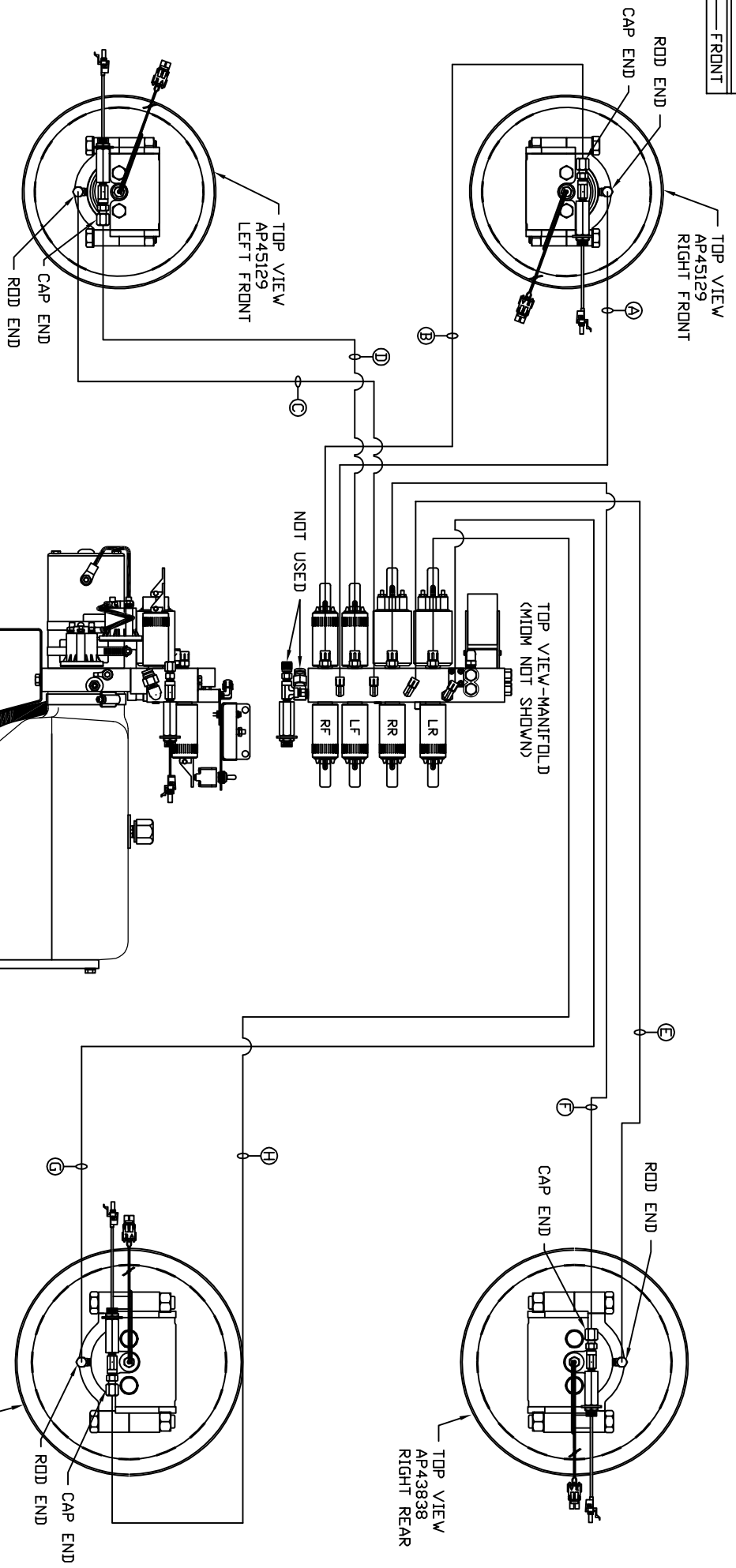


ORIENTATION
FRONT



- Ⓐ AP4063 HOSE ASSY 04 x 288" - RF ROD END
- Ⓑ AP54013 HOSE ASSY 05 x 288" - RF CAP END
- Ⓒ AP4061 HOSE ASSY 04 x 216" - LF ROD END
- Ⓓ AP54011 HOSE ASSY 05 x 216" - LF CAP END
- Ⓔ AP29767 HOSE ASSY 04 x 600" - RR ROD END
- Ⓕ AP54020 HOSE ASSY 05 x 600" - RR CAP END
- Ⓖ AP7175 HOSE ASSY 04 x 540" - LR ROD END
- Ⓗ AP7817 HOSE ASSY 05 x 540" - LR CAP END

NOTE: INSTALLATION MUST CONFORM TO GOOD SHOP PRACTICES, SAE STANDARDS, RVIA STANDARDS, AND OTHER APPLICABLE STANDARDS.

LEVELING SYSTEM: AP57428

NO.	DATE	REVISION

HWH 1-80 EXIT 267 SOUTH
 RT 1 MOSCOW, IOWA 52760
 SCALE 1:6 DATE 06FEB17 DRAWN BY
HYD CONN DIAGRAM
TRUCKVAN DRAWING NUMBER
MP71063

THE INFORMATION DISCLOSED ON THIS DRAWING IS CONFIDENTIAL AND MUST NOT BE DISCLOSED OR USED IN ANY MANNER WHICH WILL BE DETRIMENTAL TO THE HWH CORPORATION