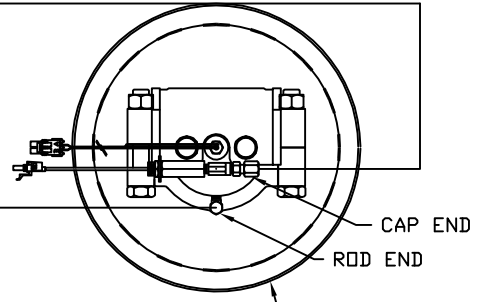
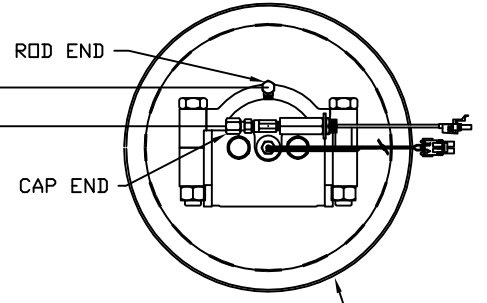
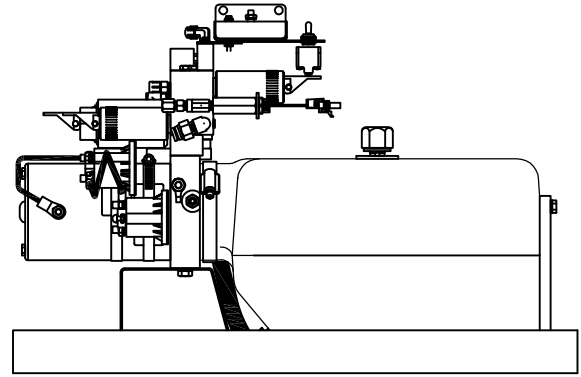
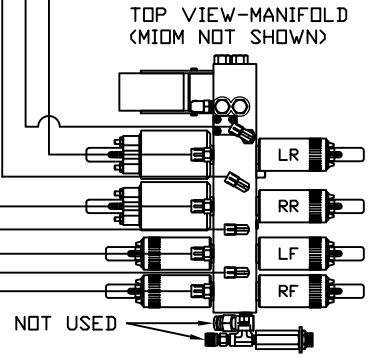
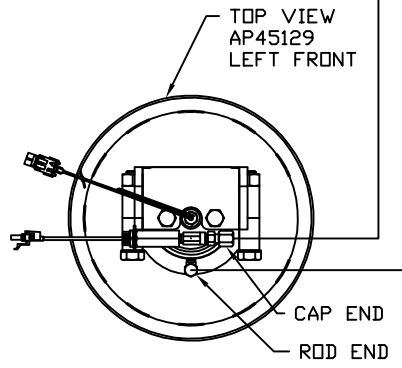
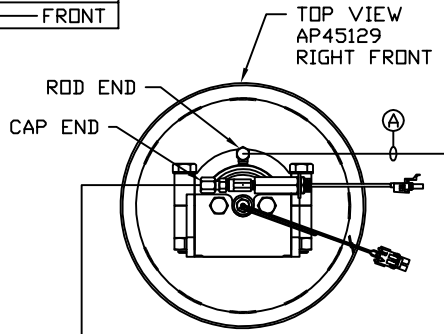


ORIENTATION  
← FRONT



- Ⓐ HOSE ASSY 04 - RF ROD END
- Ⓑ HOSE ASSY 05 - RF CAP END
- Ⓒ HOSE ASSY 04 - LF ROD END
- Ⓓ HOSE ASSY 05 - LF CAP END
- Ⓔ HOSE ASSY 04 - RR ROD END
- Ⓕ HOSE ASSY 05 - RR CAP END
- Ⓖ HOSE ASSY 04 - LR ROD END
- Ⓗ HOSE ASSY 05 - LR CAP END

NOTE: INSTALLATION MUST CONFORM TO GOOD SHOP PRACTICES, SAE STANDARDS, RVIA STANDARDS, AND OTHER APPLICABLE STANDARDS.

LEVELING SYSTEM: AP56863

⚠	08MAR19	ADDED AP59086-01
NO.	DATE	REVISION

HWH I-80 EXIT 267 SOUTH  
RT 1 MOSCOW, IOWA 52760

SCALE 1:6 DATE 07FEB17 DRAWN BY .

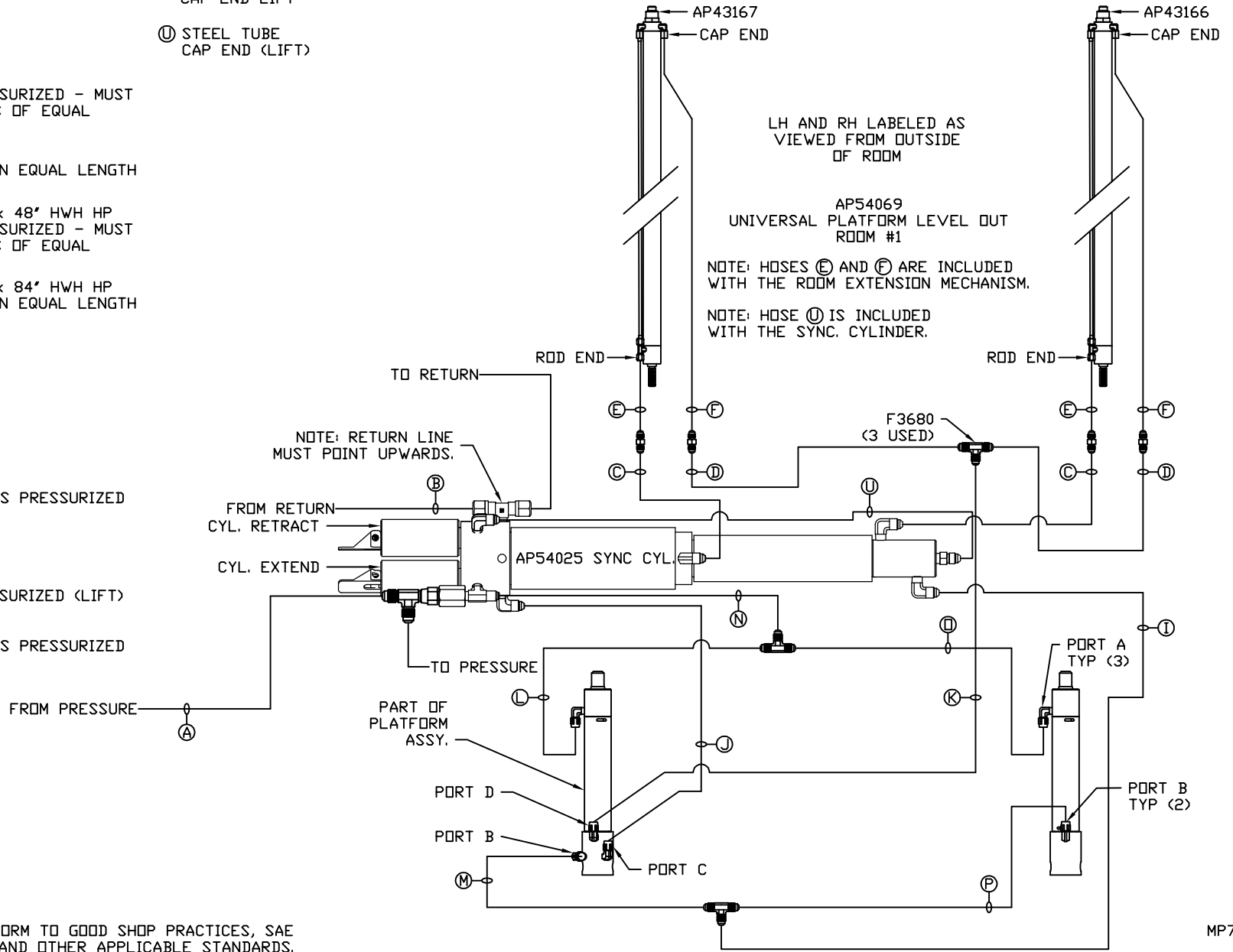
HYD CONN DIAGRAM

ROSENBAUER DRAWING NUMBER MP71064 A/C

THE INFORMATION DISCLOSED ON THIS DRAWING IS CONFIDENTIAL AND MUST NOT BE DISCLOSED OR USED IN ANY MANNER WHICH WILL BE DETRIMENTAL TO THE HWH CORPORATION

- Ⓐ HOSE ASSY 04  
PRESSURE
- Ⓑ .375" OD NYLON TUBING  
RETURN
- Ⓒ HOSE ASSY 03  
ROD END - ALWAYS PRESSURIZED - MUST  
BE HIGH PRESSURE HOSES OF EQUAL  
LENGTH AND DIAMETER
- Ⓓ HOSE ASSY 04  
CAP END - MUST MAINTAIN EQUAL LENGTH  
AND DIAMETER
- Ⓔ AP24632 HOSE ASSY 02 x 48" HWH HP  
ROD END - ALWAYS PRESSURIZED - MUST  
BE HIGH PRESSURE HOSES OF EQUAL  
LENGTH AND DIAMETER
- Ⓕ AP24636 HOSE ASSY 02 x 84" HWH HP  
CAP END - MUST MAINTAIN EQUAL LENGTH  
AND DIAMETER
- Ⓖ HOSE ASSY 04  
CAP END (LIFT)
- Ⓙ HOSE ASSY 03  
CAP END (ROOM)
- Ⓚ HOSE ASSY 03  
CAP END (ROOM)
- Ⓛ HOSE ASSY 03  
ROD END (LIFT) - ALWAYS PRESSURIZED
- Ⓜ HOSE ASSY 03  
CAP END (LIFT)
- Ⓝ HOSE ASSY 04  
ROD END - ALWAYS PRESSURIZED (LIFT)
- Ⓟ HOSE ASSY 03  
ROD END (LIFT) - ALWAYS PRESSURIZED

- Ⓟ HOSE ASSY 03  
CAP END LIFT
- Ⓠ STEEL TUBE  
CAP END (LIFT)

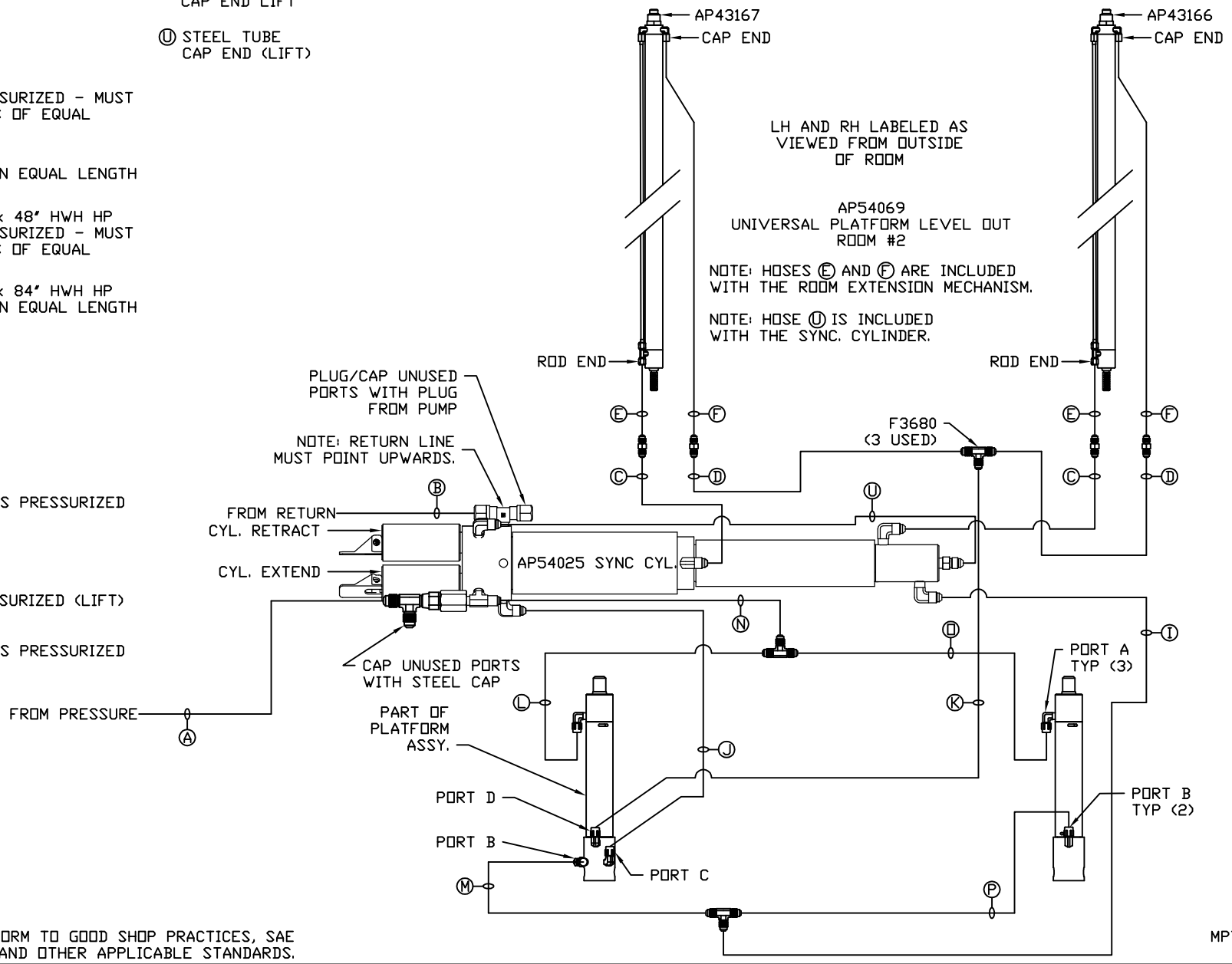


NOTE: INSTALLATION MUST CONFORM TO GOOD SHOP PRACTICES, SAE STANDARDS, RVIA STANDARDS, AND OTHER APPLICABLE STANDARDS.

MP71064 B/C  
07FEB17

- Ⓐ HOSE ASSY 04  
PRESSURE
- Ⓑ .375" OD NYLON TUBING  
RETURN
- Ⓒ HOSE ASSY 03  
ROD END - ALWAYS PRESSURIZED - MUST  
BE HIGH PRESSURE HOSES OF EQUAL  
LENGTH AND DIAMETER
- Ⓓ HOSE ASSY 04  
CAP END - MUST MAINTAIN EQUAL LENGTH  
AND DIAMETER
- Ⓔ AP24632 HOSE ASSY 02 x 48" HWH HP  
ROD END - ALWAYS PRESSURIZED - MUST  
BE HIGH PRESSURE HOSES OF EQUAL  
LENGTH AND DIAMETER
- Ⓕ AP24636 HOSE ASSY 02 x 84" HWH HP  
CAP END - MUST MAINTAIN EQUAL LENGTH  
AND DIAMETER
- Ⓖ HOSE ASSY 04  
CAP END (LIFT)
- Ⓙ HOSE ASSY 03  
CAP END (ROOM)
- Ⓚ HOSE ASSY 03  
CAP END (ROOM)
- Ⓛ HOSE ASSY 03  
ROD END (LIFT) - ALWAYS PRESSURIZED
- Ⓜ HOSE ASSY 03  
CAP END (LIFT)
- Ⓝ HOSE ASSY 04  
ROD END - ALWAYS PRESSURIZED (LIFT)
- Ⓟ HOSE ASSY 03  
ROD END (LIFT) - ALWAYS PRESSURIZED

- Ⓟ HOSE ASSY 03  
CAP END LIFT
- Ⓠ STEEL TUBE  
CAP END (LIFT)



NOTE: INSTALLATION MUST CONFORM TO GOOD SHOP PRACTICES, SAE STANDARDS, RVIA STANDARDS, AND OTHER APPLICABLE STANDARDS.

MP71064 C/C  
07FEB17