

NOTE: CROSS TIES REQUIRED FOR FRONT AND REAR JACKS

NOTE: INSTALLATION MUST CONFORM TO GOOD SHOP PRACTICES, SAE STANDARDS, RVIA STANDARDS, AND OTHER APPLICABLE STANDARDS.

LEVELING SYSTEM: AP40440

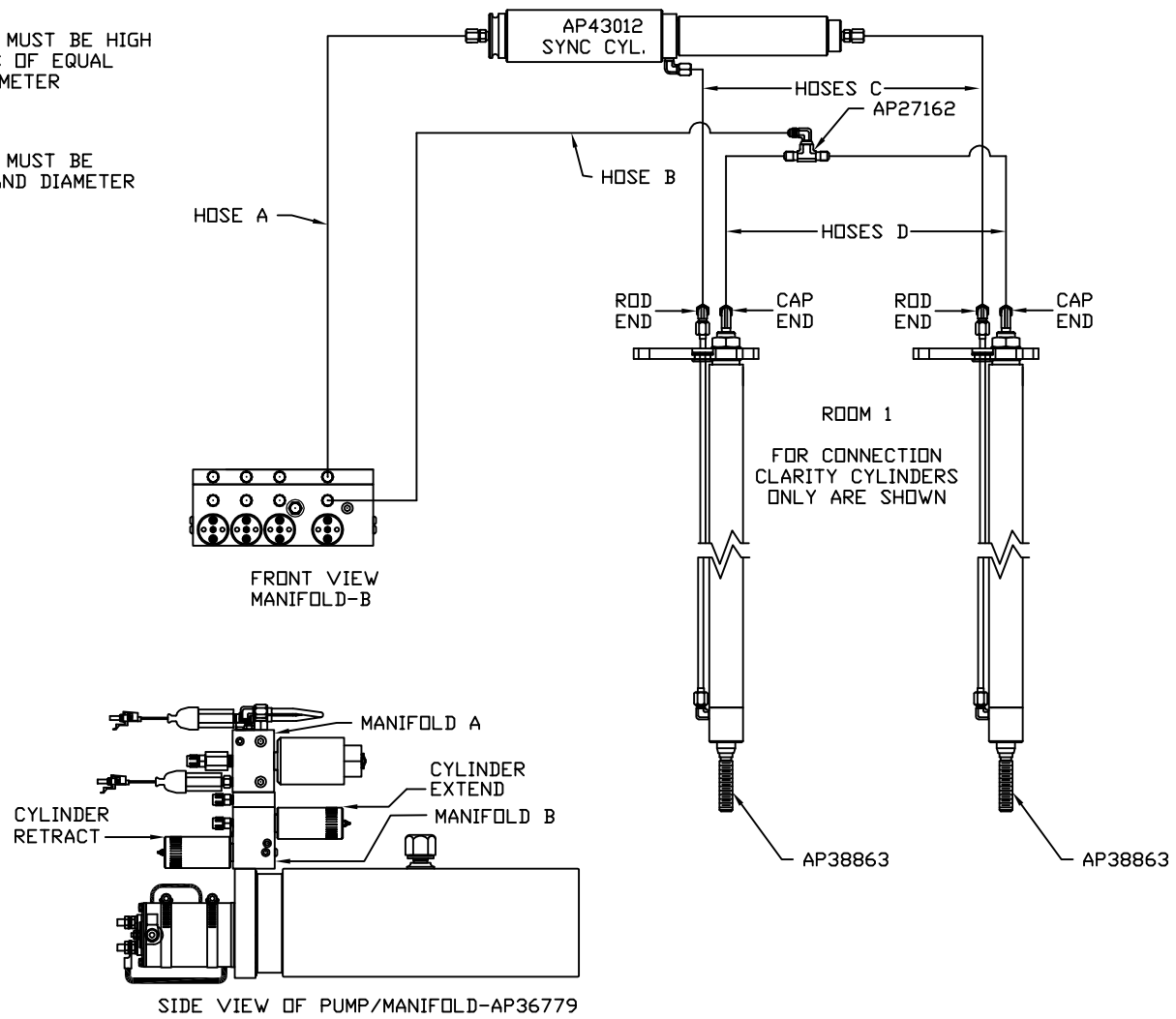
		HWH		I-80 EXIT 267 SOUTH RT 1 MOSCOW, IOWA 52760	
		SCALE 1:6	DATE 15FEB17	DRAWN BY .	
		HYD CONN DIAGRAM			
NO.	DATE	REVISION			
		WINNEBAGO		DRAWING NUMBER MP71084 A/E	
<p>THE INFORMATION DISCLOSED ON THIS DRAWING IS CONFIDENTIAL AND MUST NOT BE DISCLOSED OR USED IN ANY MANNER WHICH WILL BE DETRIMENTAL TO THE HWH CORPORATION</p>					

ORIENTATION  
 ← FRONT

MODEL	HOSE A	HOSE B	HOSES C	HOSES D
R40FD	NO INFORMATION			
S40FD	NO INFORMATION			

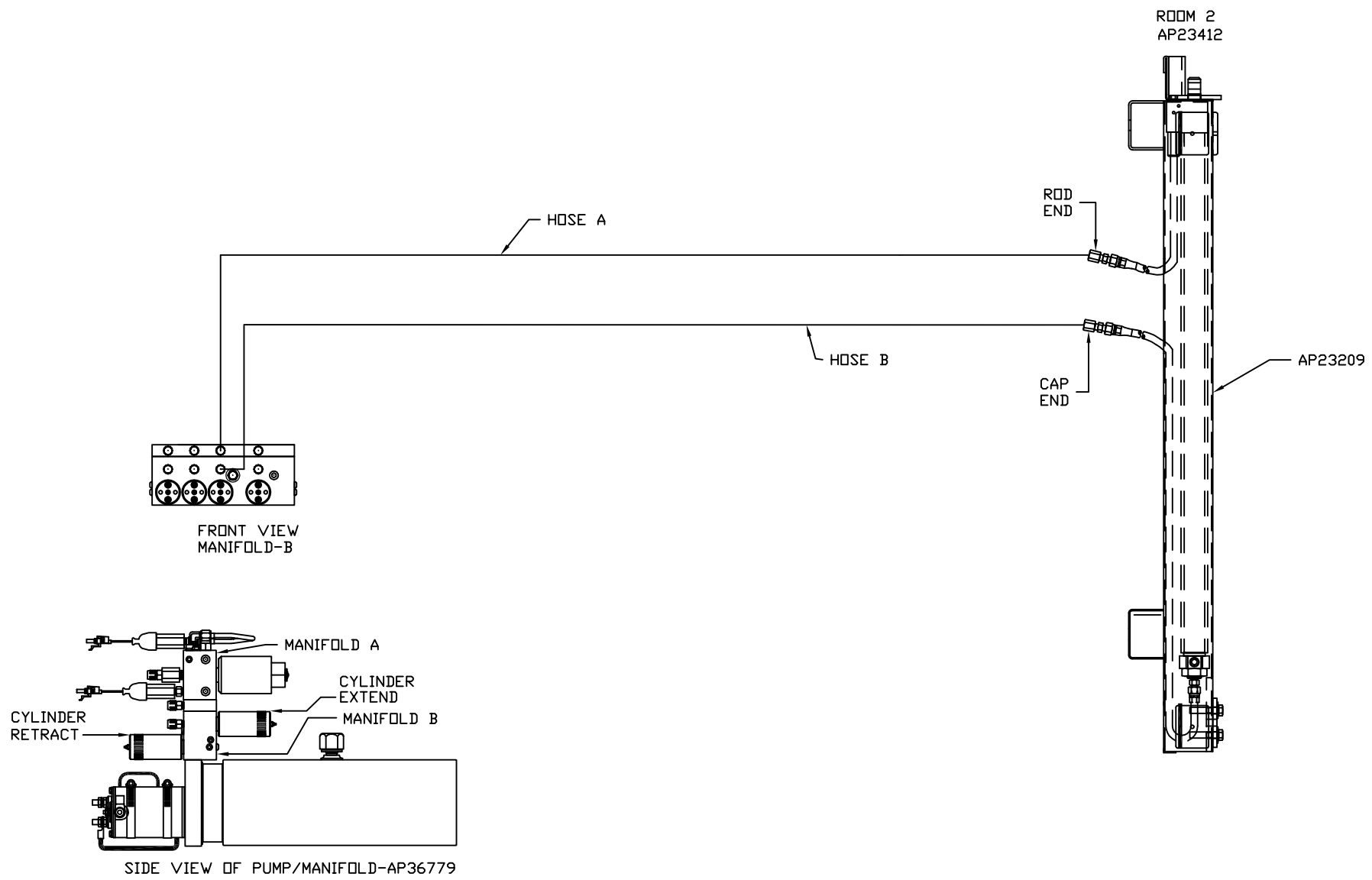
NOTE: HOSES C MUST BE HIGH PRESSURE HOSES OF EQUAL LENGTH AND DIAMETER

NOTE: HOSES D MUST BE EQUAL LENGTH AND DIAMETER

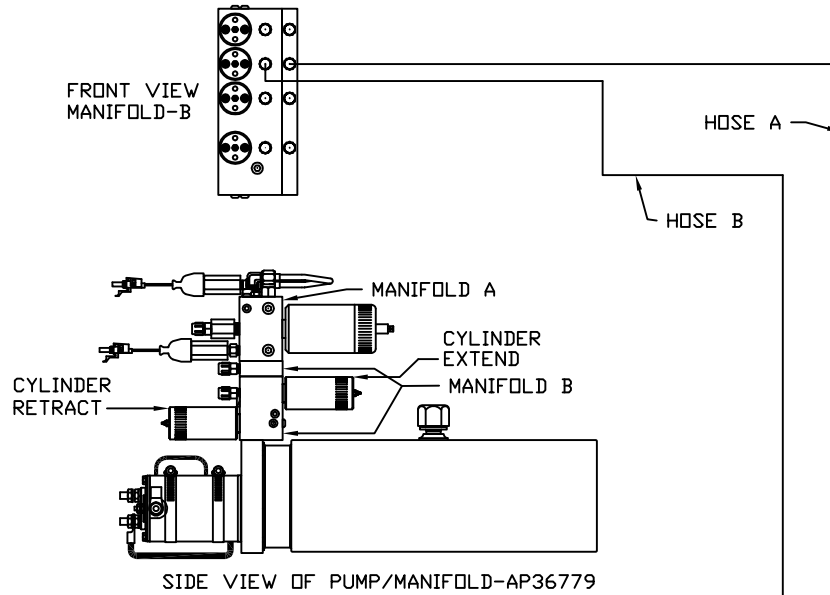


ORIENTATION  
 ← FRONT

MODEL	HOSE A	HOSE B
R40FD	AP8985	AP2464
S40FD	AP8985	AP2464



ORIENTATION  
← FRONT

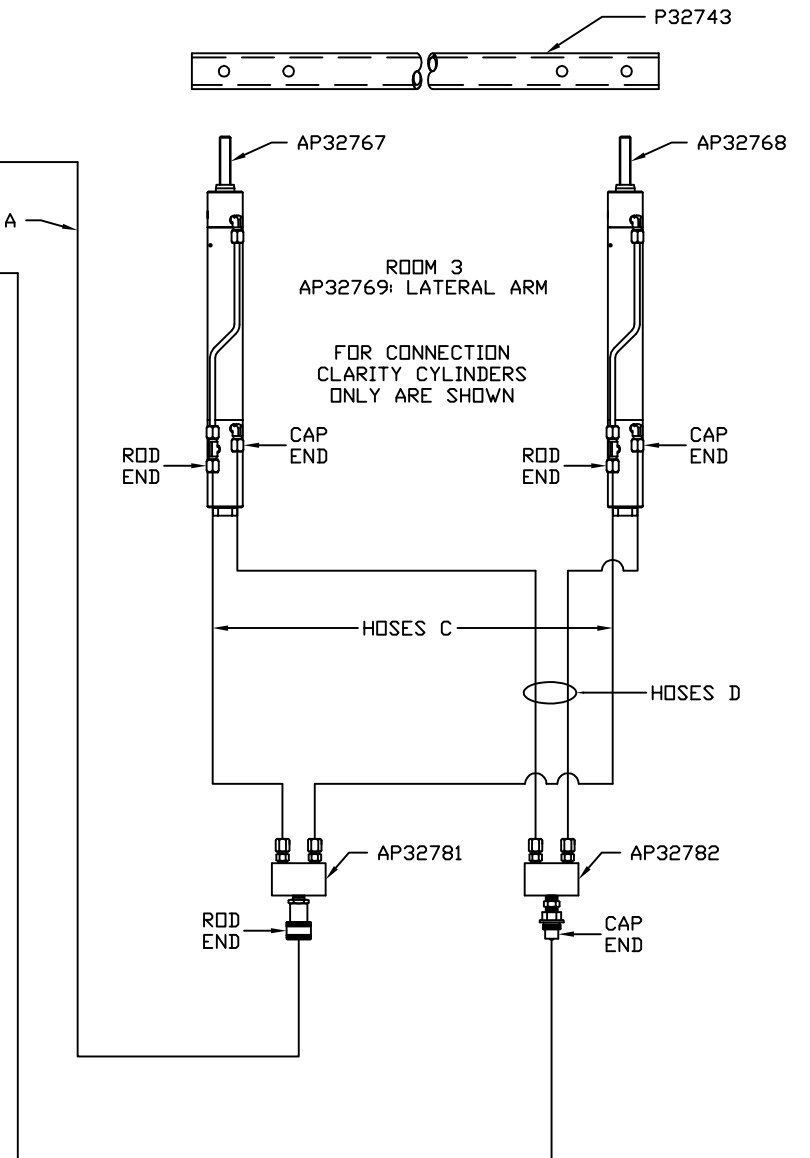


NOTE: HOSES C MUST BE HIGH PRESSURE HOSES OF EQUAL LENGTH AND DIAMETER

NOTE: HOSES D MUST BE EQUAL LENGTH AND DIAMETER

MODEL	HOSE A	HOSE B	HOSES C	HOSES D
R40FD	AP34161	AP32685	AP24635	AP25086
S40FD	AP34161	AP32685	AP24635	AP25086

NOTE: AP32781, AP32782, AND HOSES C AND D ARE PART OF THE ROOM EXTENSION MECHANISM. P32743 IS SOLD SEPARATELY



ORIENTATION  
← FRONT

MODEL	HOSE A	HOSE B	HOSES C	HOSES D
R40FD	NO INFORMATION			
S40FD	NO INFORMATION			

NOTE: HOSES C MUST BE HIGH PRESSURE HOSES OF EQUAL LENGTH AND DIAMETER

NOTE: HOSES D MUST BE EQUAL LENGTH AND DIAMETER

