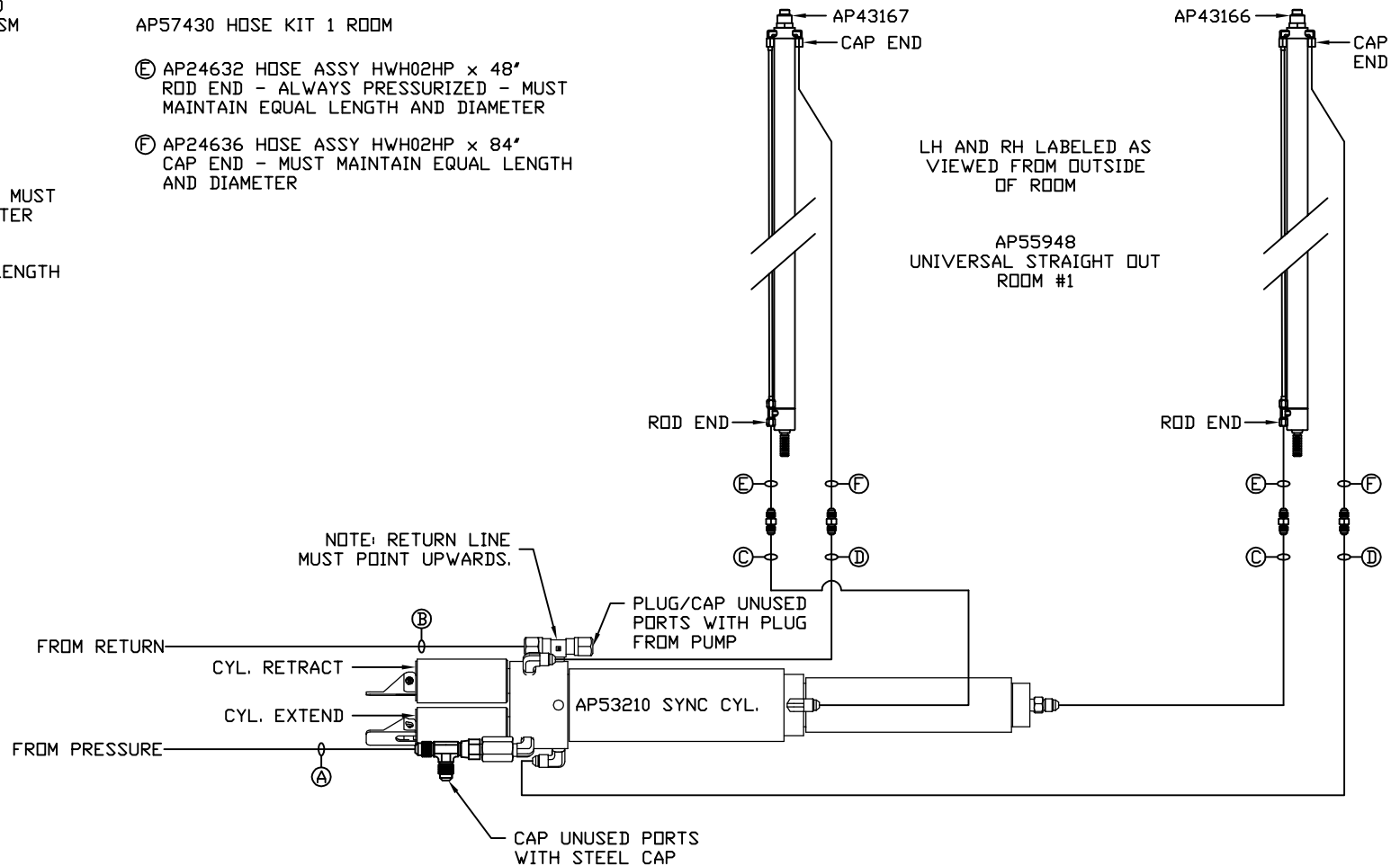


NOTE: HOSES ⑤ AND ⑥ ARE INCLUDED WITH THE ROOM EXTENSION MECHANISM

- ① AP5216 HOSE ASSY 04 X 312" PRESSURE
- ② P4479 TUBING NYLON 3/8 X 360" RETURN
- ③ AP49245 HOSE ASSY 03 X 120" ROD END - ALWAYS PRESSURIZED - MUST MAINTAIN EQUAL LENGTH AND DIAMETER
- ④ AP4161 HOSE ASSY 04 X 120" CAP END - MUST MAINTAIN EQUAL LENGTH AND DIAMETER

AP57430 HOSE KIT 1 ROOM

- ⑤ AP24632 HOSE ASSY HWH02HP x 48" ROD END - ALWAYS PRESSURIZED - MUST MAINTAIN EQUAL LENGTH AND DIAMETER
- ⑥ AP24636 HOSE ASSY HWH02HP x 84" CAP END - MUST MAINTAIN EQUAL LENGTH AND DIAMETER



NOTE: INSTALLATION MUST CONFORM TO GOOD SHOP PRACTICES, SAE STANDARDS, RVIA STANDARDS, AND OTHER APPLICABLE STANDARDS.

MP71090 B/B
04APR17