

- Ⓐ AP4063 HOSE ASSY 04 x 288" - RF ROD END
- Ⓑ AP54013 HOSE ASSY 05 x 288" - RF CAP END
- Ⓒ AP4063 HOSE ASSY 04 x 288" - LF ROD END
- Ⓓ AP54013 HOSE ASSY 05 x 288" - LF CAP END
- Ⓔ AP4073 HOSE ASSY 04 x 60" - RR ROD END
- Ⓕ AP8385 HOSE ASSY 05 x 60" - RR CAP END
- Ⓖ AP4073 HOSE ASSY 04 x 60" - LR ROD END
- Ⓗ AP8385 HOSE ASSY 05 x 60" - LR CAP END

NOTE: INSTALLATION MUST CONFORM TO GOOD SHOP PRACTICES, SAE STANDARDS, RVIA STANDARDS, AND OTHER APPLICABLE STANDARDS.

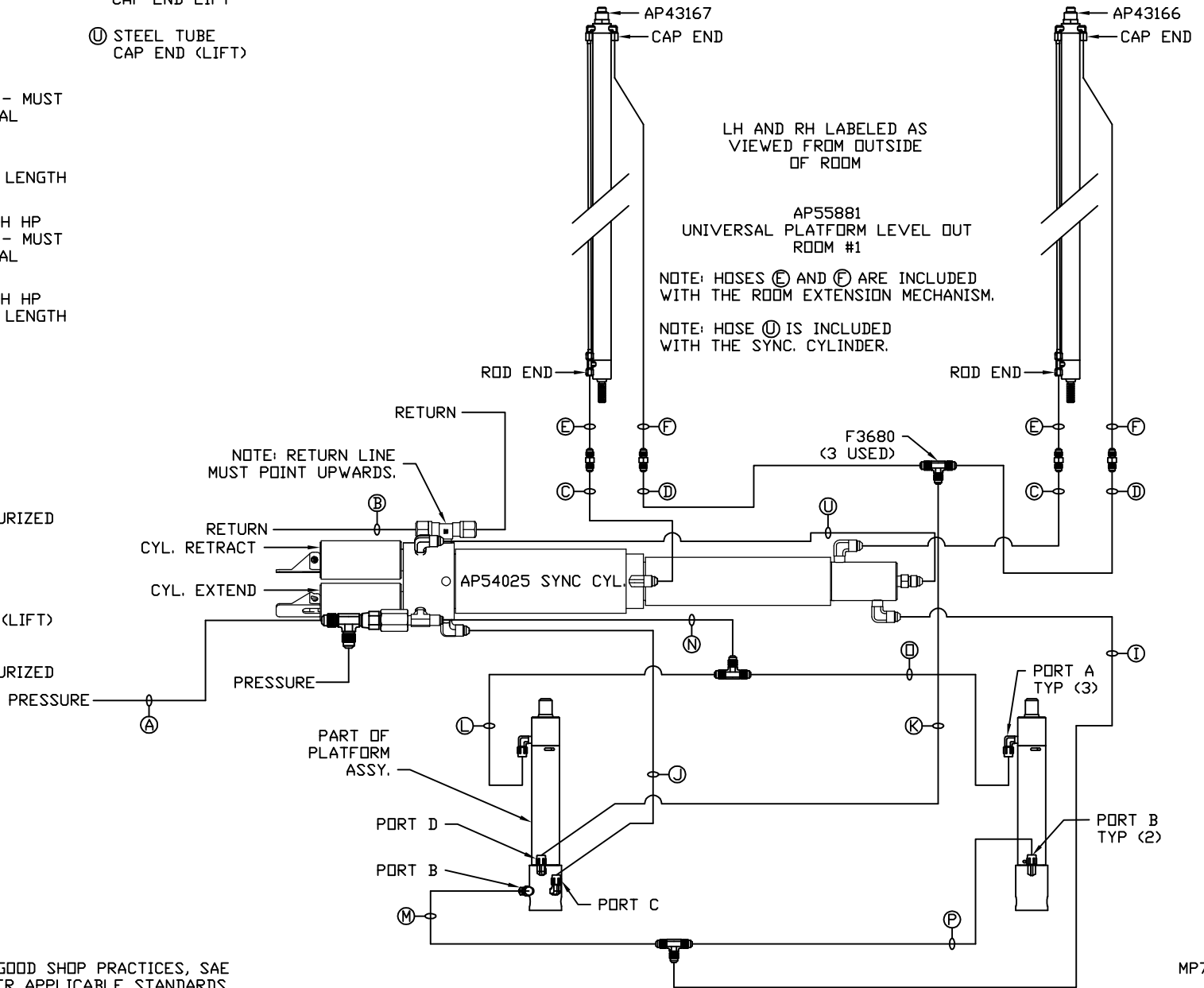
LEVELING SYSTEM: AP57666

		HWH I-80 EXIT 267 SOUTH RT 1 MOSCOW, IOWA 52760	
		SCALE 1:6	DATE 11MAY17
		DRAWN BY .	
		HYD CONN DIAGRAM	
NO.	DATE	REVISION	
THE INFORMATION DISCLOSED ON THIS DRAWING IS CONFIDENTIAL AND MUST NOT BE DISCLOSED OR USED IN ANY MANNER WHICH WILL BE DETRIMENTAL TO THE HWH CORPORATION			
		BRAUN NW	DRAWING NUMBER MP71097 A/C

- (A) AP10913 HOSE ASSY 04 x 162" PRESSURE
- (B) P5145 TUBING NYLON 3/8 x 180" RETURN
- (C) AP51480 HOSE ASSY 03 x 66" ROD END - ALWAYS PRESSURIZED - MUST BE HIGH PRESSURE HOSES OF EQUAL LENGTH AND DIAMETER
- (D) AP4158 HOSE ASSY 04 x 12" CAP END - MUST MAINTAIN EQUAL LENGTH AND DIAMETER
- (E) AP24632 HOSE ASSY 02 x 48" HWH HP ROD END - ALWAYS PRESSURIZED - MUST BE HIGH PRESSURE HOSES OF EQUAL LENGTH AND DIAMETER
- (F) AP24636 HOSE ASSY 02 x 84" HWH HP CAP END - MUST MAINTAIN EQUAL LENGTH AND DIAMETER
- (I) AP5352 HOSE ASSY 04 x 96" CAP END (LIFT)
- (J) AP10566 HOSE ASSY 04 x 102" CAP END (ROOM)
- (K) AP4060 HOSE ASSY 04 x 24" CAP END (ROOM)
- (L) AP50861 HOSE ASSY 03 x 102" ROD END (LIFT) - ALWAYS PRESSURIZED
- (M) AP49244 HOSE ASSY 03 x 108" CAP END (LIFT)
- (N) HOSE ASSY 04 ROD END - ALWAYS PRESSURIZED (LIFT)
- (O) AP50907 HOSE ASSY 03 x 48" ROD END (LIFT) - ALWAYS PRESSURIZED

- (P) AP4217 HOSE ASSY 04 x 30" CAP END LIFT
- (U) STEEL TUBE CAP END (LIFT)

AP57669 HOSE KIT 2 ROOM

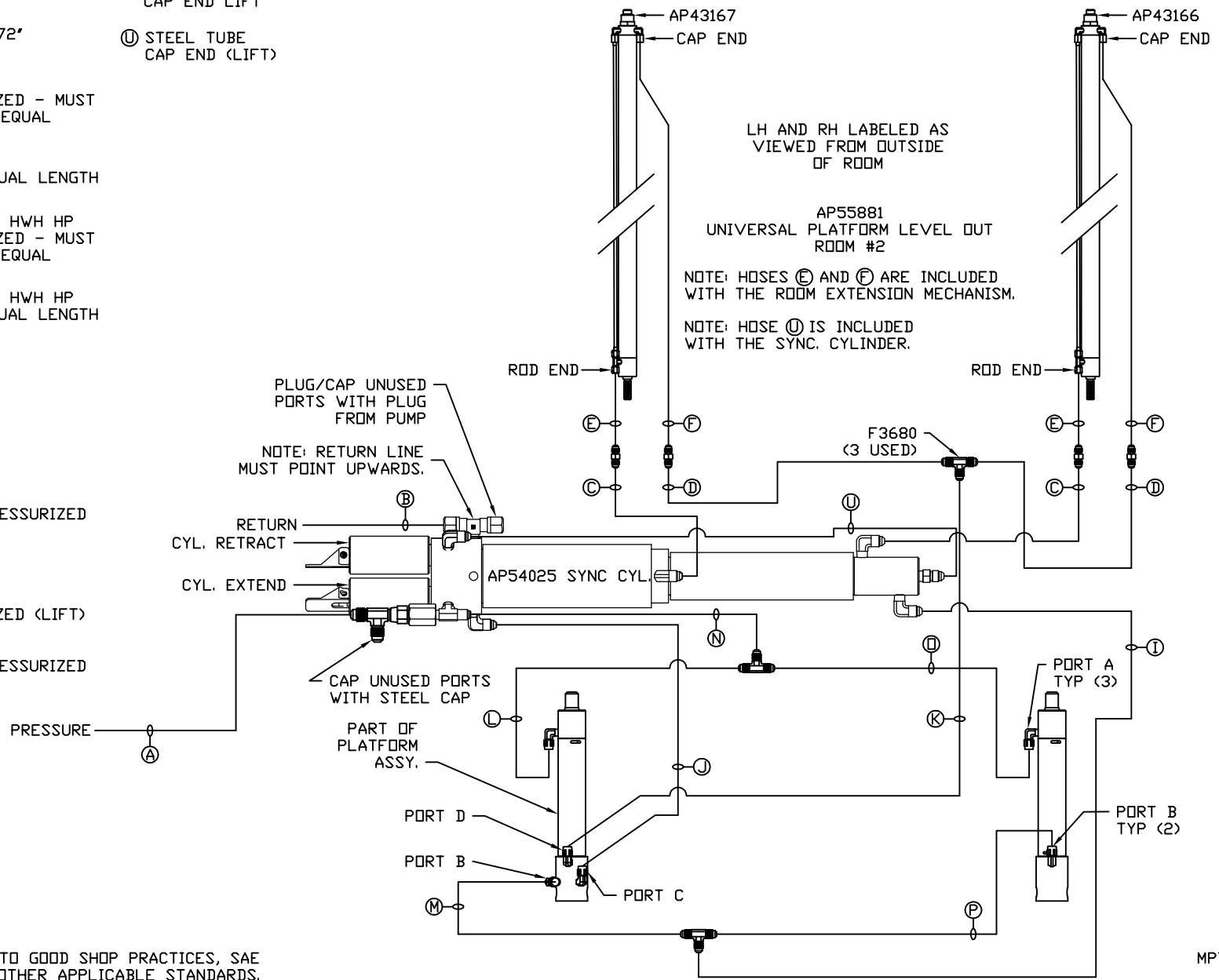


NOTE: INSTALLATION MUST CONFORM TO GOOD SHOP PRACTICES, SAE STANDARDS, RVIA STANDARDS, AND OTHER APPLICABLE STANDARDS.

MP71097 B/C
11MAY17

- (A) AP5351 HOSE ASSY 04 x 66" PRESSURE
- (B) P55310 TUBING NYLON 3/8 x 72" RETURN
- (C) AP50910 HOSE ASSY 03 x 90" ROD END - ALWAYS PRESSURIZED - MUST BE HIGH PRESSURE HOSES OF EQUAL LENGTH AND DIAMETER
- (D) AP5351 HOSE ASSY 04 x 66" CAP END - MUST MAINTAIN EQUAL LENGTH AND DIAMETER
- (E) AP24632 HOSE ASSY 02 x 48" HWH HP ROD END - ALWAYS PRESSURIZED - MUST BE HIGH PRESSURE HOSES OF EQUAL LENGTH AND DIAMETER
- (F) AP24636 HOSE ASSY 02 x 84" HWH HP CAP END - MUST MAINTAIN EQUAL LENGTH AND DIAMETER
- (I) AP4059 HOSE ASSY 04 x 36" CAP END (LIFT)
- (J) AP5215 HOSE ASSY 04 x 78" CAP END (ROOM)
- (K) AP4217 HOSE ASSY 04 x 30" CAP END (ROOM)
- (L) AP51975 HOSE ASSY 03 x 30" ROD END (LIFT) - ALWAYS PRESSURIZED
- (M) AP51975 HOSE ASSY 03 x 30" CAP END (LIFT)
- (N) HOSE ASSY 04 ROD END - ALWAYS PRESSURIZED (LIFT)
- (O) AP50909 HOSE ASSY 03 x 72" ROD END (LIFT) - ALWAYS PRESSURIZED

- (P) AP4159 HOSE ASSY 04 x 72" CAP END LIFT
- (U) STEEL TUBE CAP END (LIFT)



NOTE: INSTALLATION MUST CONFORM TO GOOD SHOP PRACTICES, SAE STANDARDS, RVIA STANDARDS, AND OTHER APPLICABLE STANDARDS.