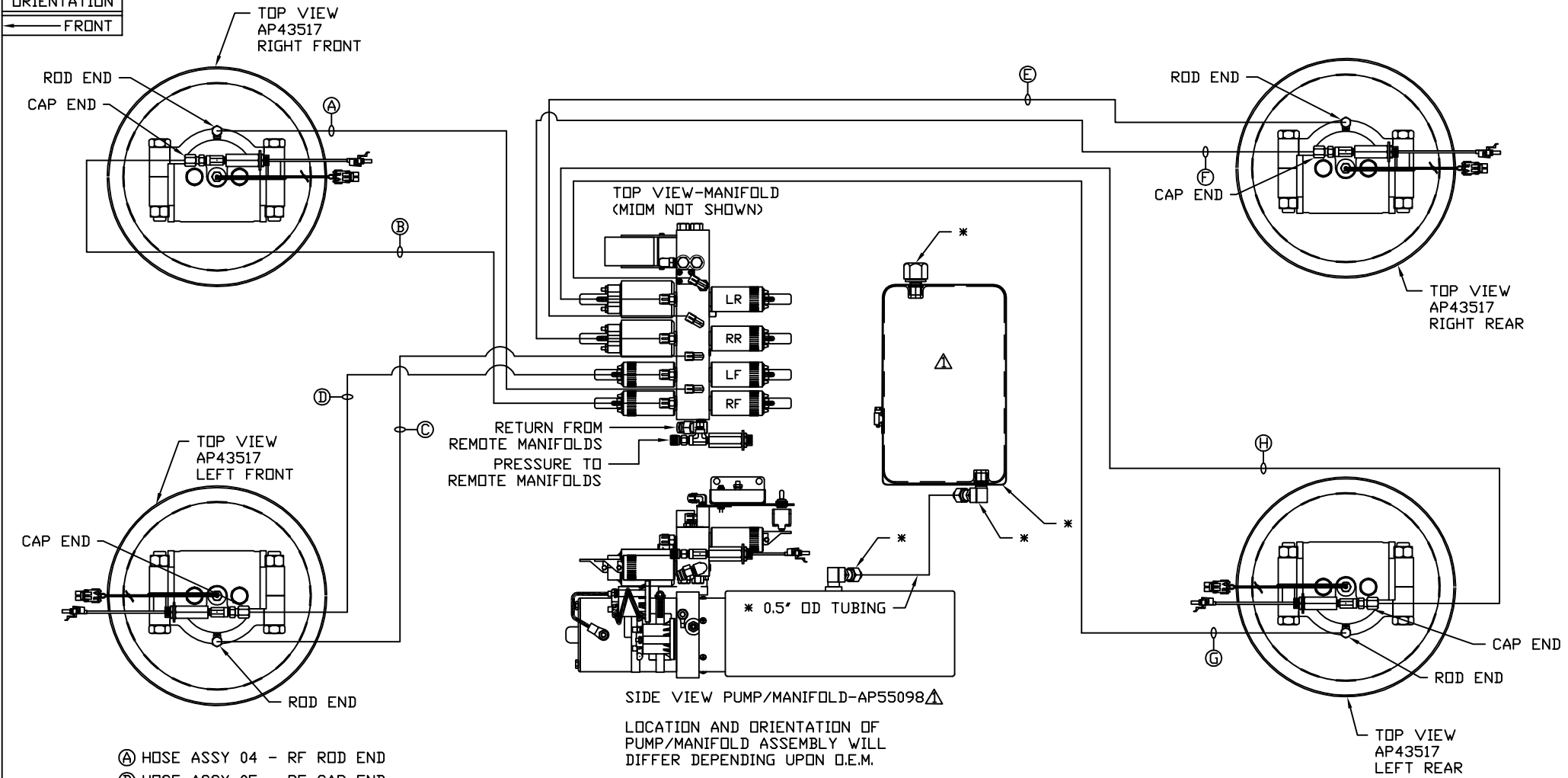


ORIENTATION
← FRONT



- Ⓐ HOSE ASSY 04 - RF ROD END
- Ⓑ HOSE ASSY 05 - RF CAP END
- Ⓒ HOSE ASSY 04 - LF ROD END
- Ⓓ HOSE ASSY 05 - LF CAP END
- Ⓔ HOSE ASSY 04 - RR ROD END
- Ⓕ HOSE ASSY 05 - RR CAP END
- Ⓖ HOSE ASSY 04 - LR ROD END
- Ⓗ HOSE ASSY 05 - LR CAP END

⚠ *AP45236 TANK KIT

NOTE: INSTALLATION MUST CONFORM TO GOOD SHOP PRACTICES, SAE STANDARDS, RVIA STANDARDS, AND OTHER APPLICABLE STANDARDS.

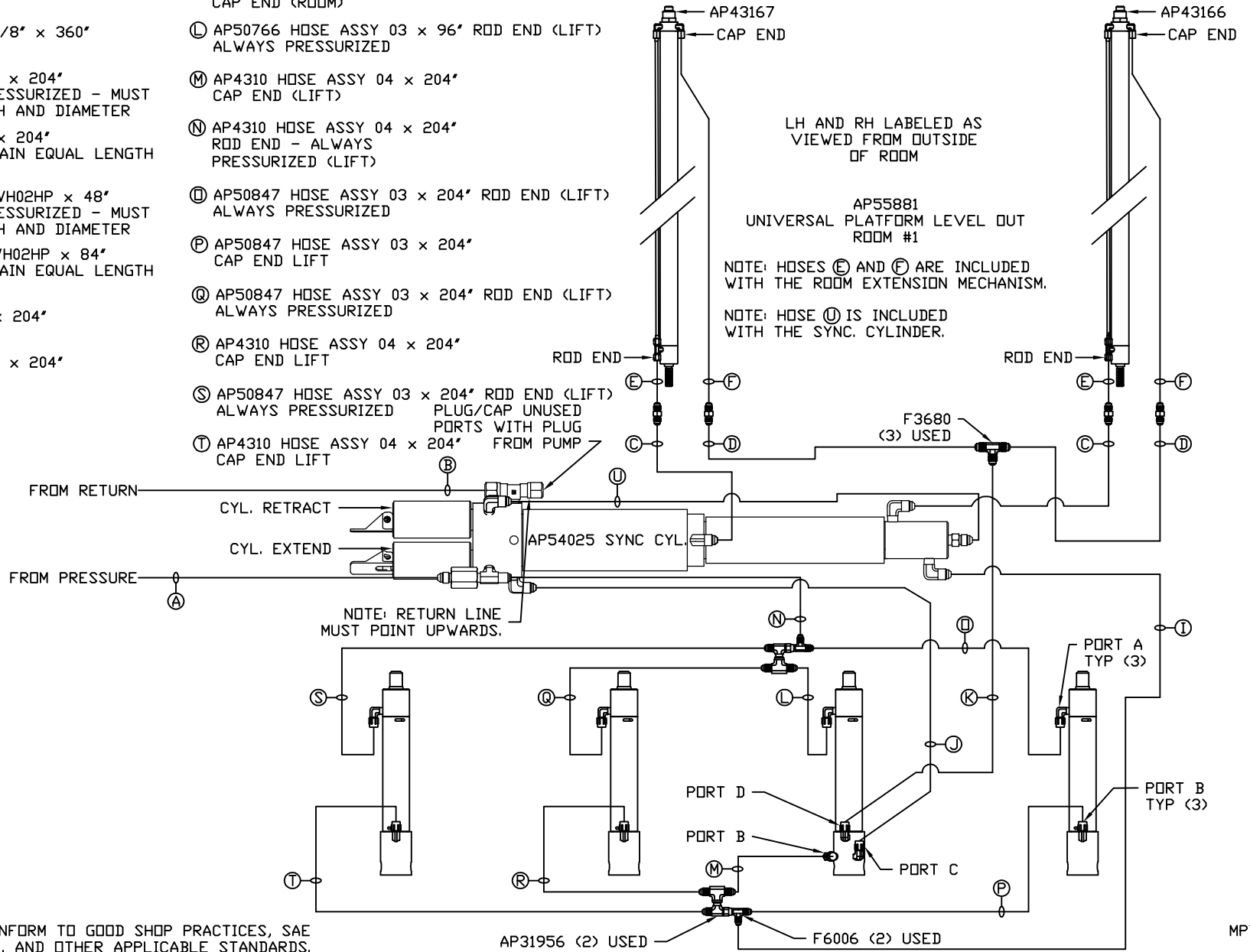
LEVELING SYSTEM: AP57672

		HWH I-80 EXIT 267 SOUTH RT 1 MOSCOW, IOWA 52760	
		SCALE 1:6	DATE 13JUN17
		DRAWN BY .	
⚠	03JAN18	WAS AP56683-01,AD'D TANK	
NO.	DATE	REVISION	
THE INFORMATION DISCLOSED ON THIS DRAWING IS CONFIDENTIAL AND MUST NOT BE DISCLOSED OR USED IN ANY MANNER WHICH WILL BE DETRIMENTAL TO THE HWH CORPORATION			
TURNKEY-EVO		DRAWING NUMBER MP71100 A/C	

- (A) AP5216 HOSE ASSY 04 x 312' PRESSURE
- (B) P4479 NYLON TUBING 3/8" x 360' RETURN
- (C) AP50847 HOSE ASSY 03 x 204' ROD END - ALWAYS PRESSURIZED - MUST MAINTAIN EQUAL LENGTH AND DIAMETER
- (D) AP4310 HOSE ASSY 04 x 204' CAP END - MUST MAINTAIN EQUAL LENGTH AND DIAMETER
- (E) AP24632 HOSE ASSY HWH02HP x 48' ROD END - ALWAYS PRESSURIZED - MUST MAINTAIN EQUAL LENGTH AND DIAMETER
- (F) AP24818 HOSE ASSY HWH02HP x 84' CAP END - MUST MAINTAIN EQUAL LENGTH AND DIAMETER
- (I) AP4310 HOSE ASSY 04 x 204' CAP END (LIFT)
- (J) AP50847 HOSE ASSY 03 x 204' CAP END (ROOM)

- (K) AP4310 HOSE ASSY 04 x 204' CAP END (ROOM)
- (L) AP50766 HOSE ASSY 03 x 96' ROD END (LIFT) ALWAYS PRESSURIZED
- (M) AP4310 HOSE ASSY 04 x 204' CAP END (LIFT)
- (N) AP4310 HOSE ASSY 04 x 204' ROD END - ALWAYS PRESSURIZED (LIFT)
- (O) AP50847 HOSE ASSY 03 x 204' ROD END (LIFT) ALWAYS PRESSURIZED
- (P) AP50847 HOSE ASSY 03 x 204' CAP END LIFT
- (Q) AP50847 HOSE ASSY 03 x 204' ROD END (LIFT) ALWAYS PRESSURIZED
- (R) AP4310 HOSE ASSY 04 x 204' CAP END LIFT
- (S) AP50847 HOSE ASSY 03 x 204' ROD END (LIFT) ALWAYS PRESSURIZED
- (T) AP4310 HOSE ASSY 04 x 204' CAP END LIFT

AP57675 HOSE KIT 2 ROOM

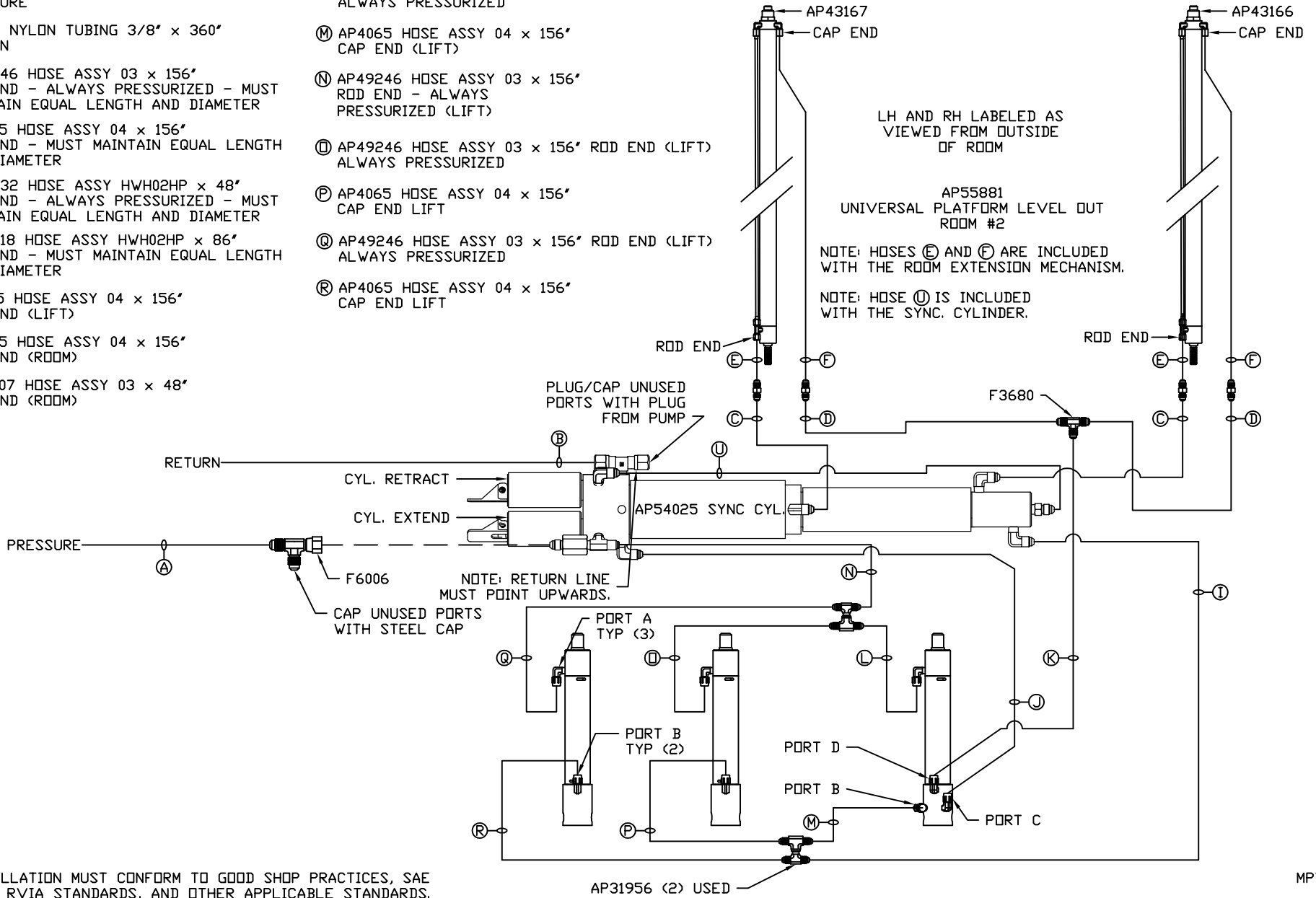


NOTE: INSTALLATION MUST CONFORM TO GOOD SHOP PRACTICES, SAE STANDARDS, RVIA STANDARDS, AND OTHER APPLICABLE STANDARDS.

MP71100 B/C
13JUN17

- Ⓐ AP5216 HOSE ASSY 04 x 312' PRESSURE
- Ⓑ P4479 NYLON TUBING 3/8" x 360' RETURN
- Ⓒ AP49246 HOSE ASSY 03 x 156' ROD END - ALWAYS PRESSURIZED - MUST MAINTAIN EQUAL LENGTH AND DIAMETER
- Ⓓ AP4065 HOSE ASSY 04 x 156' CAP END - MUST MAINTAIN EQUAL LENGTH AND DIAMETER
- Ⓔ AP24632 HOSE ASSY HWH02HP x 48' ROD END - ALWAYS PRESSURIZED - MUST MAINTAIN EQUAL LENGTH AND DIAMETER
- Ⓕ AP24818 HOSE ASSY HWH02HP x 86' CAP END - MUST MAINTAIN EQUAL LENGTH AND DIAMETER
- Ⓖ AP4065 HOSE ASSY 04 x 156' CAP END (LIFT)
- Ⓙ AP4065 HOSE ASSY 04 x 156' CAP END (ROOM)
- Ⓚ AP50907 HOSE ASSY 03 x 48' CAP END (ROOM)

- Ⓛ AP49246 HOSE ASSY 03 x 156' ROD END (LIFT) ALWAYS PRESSURIZED
- Ⓜ AP4065 HOSE ASSY 04 x 156' CAP END (LIFT)
- Ⓝ AP49246 HOSE ASSY 03 x 156' ROD END - ALWAYS PRESSURIZED (LIFT)
- Ⓟ AP49246 HOSE ASSY 03 x 156' ROD END (LIFT) ALWAYS PRESSURIZED
- Ⓠ AP4065 HOSE ASSY 04 x 156' CAP END LIFT
- Ⓡ AP49246 HOSE ASSY 03 x 156' ROD END (LIFT) ALWAYS PRESSURIZED
- Ⓢ AP4065 HOSE ASSY 04 x 156' CAP END LIFT



NOTE: INSTALLATION MUST CONFORM TO GOOD SHOP PRACTICES, SAE STANDARDS, RVIA STANDARDS, AND OTHER APPLICABLE STANDARDS.

MP71100 C/C
13JUN17