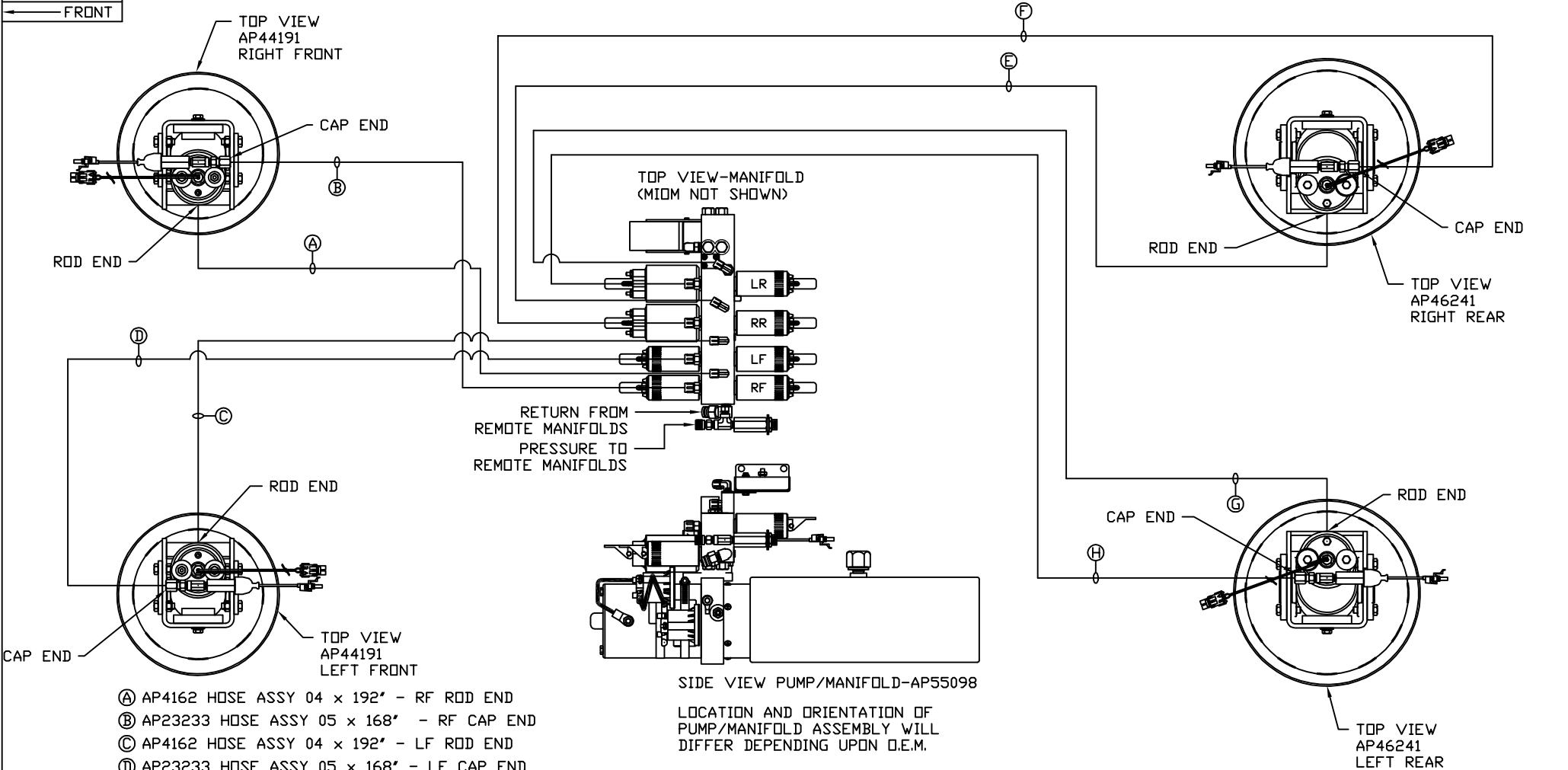


ORIENTATION
← FRONT



- Ⓐ AP4162 HOSE ASSY 04 x 192' - RF ROD END
- Ⓑ AP23233 HOSE ASSY 05 x 168' - RF CAP END
- Ⓒ AP4162 HOSE ASSY 04 x 192' - LF ROD END
- Ⓓ AP23233 HOSE ASSY 05 x 168' - LF CAP END
- Ⓔ AP7178 HOSE ASSY 04 x 504' - RR ROD END
- Ⓕ AP25654 HOSE ASSY 05 x 504' - RR CAP END
- Ⓖ AP6388 HOSE ASSY 04 x 468' - LR ROD END
- Ⓗ AP54018 HOSE ASSY 05 x 444' - LR CAP END

NO.	DATE	REVISION

HWH I-80 EXIT 267 SOUTH
RT 1 MOSCOW, IOWA 52760

SCALE 1:6 DATE 09JUN17 DRAWN BY .

HYD CONN DIAGRAM

NOTE: INSTALLATION MUST CONFORM TO GOOD SHOP PRACTICES, SAE STANDARDS, RVIA STANDARDS, AND OTHER APPLICABLE STANDARDS.

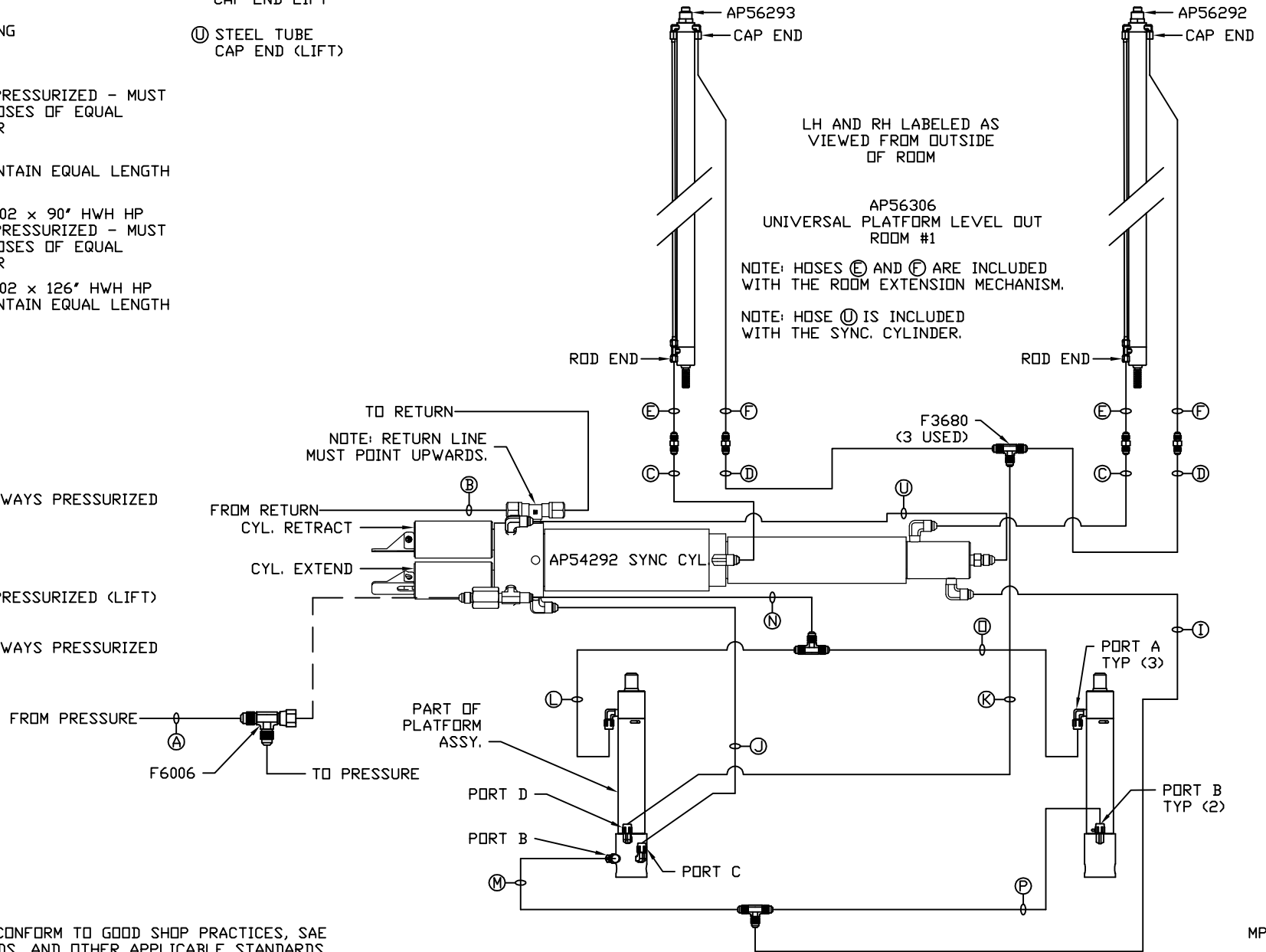
LEVELING SYSTEM: AP56048

THE INFORMATION DISCLOSED ON THIS DRAWING IS CONFIDENTIAL AND MUST NOT BE DISCLOSED OR USED IN ANY MANNER WHICH WILL BE DETRIMENTAL TO THE HWH CORPORATION

FARBER DRAWING NUMBER MP71101 A/D

- Ⓐ HOSE ASSY 04
PRESSURE
- Ⓑ .375" OD NYLON TUBING
RETURN
- Ⓒ HOSE ASSY 03
ROD END - ALWAYS PRESSURIZED - MUST
BE HIGH PRESSURE HOSES OF EQUAL
LENGTH AND DIAMETER
- Ⓓ HOSE ASSY 04
CAP END - MUST MAINTAIN EQUAL LENGTH
AND DIAMETER
- Ⓔ AP24638 HOSE ASSY 02 x 90' HWH HP
ROD END - ALWAYS PRESSURIZED - MUST
BE HIGH PRESSURE HOSES OF EQUAL
LENGTH AND DIAMETER
- Ⓕ AP24643 HOSE ASSY 02 x 126' HWH HP
CAP END - MUST MAINTAIN EQUAL LENGTH
AND DIAMETER
- Ⓖ HOSE ASSY 04
CAP END (LIFT)
- Ⓗ HOSE ASSY 03
CAP END (ROOM)
- Ⓙ HOSE ASSY 03
CAP END (ROOM)
- Ⓚ HOSE ASSY 03
ROD END (LIFT) - ALWAYS PRESSURIZED
- Ⓛ HOSE ASSY 03
CAP END (LIFT)
- Ⓜ HOSE ASSY 03
ROD END (LIFT) - ALWAYS PRESSURIZED
- Ⓝ HOSE ASSY 04
CAP END (LIFT)
- Ⓟ HOSE ASSY 03
CAP END (LIFT)
- Ⓠ HOSE ASSY 03
ROD END (LIFT) - ALWAYS PRESSURIZED

- Ⓟ HOSE ASSY 03
CAP END LIFT
- Ⓡ STEEL TUBE
CAP END (LIFT)



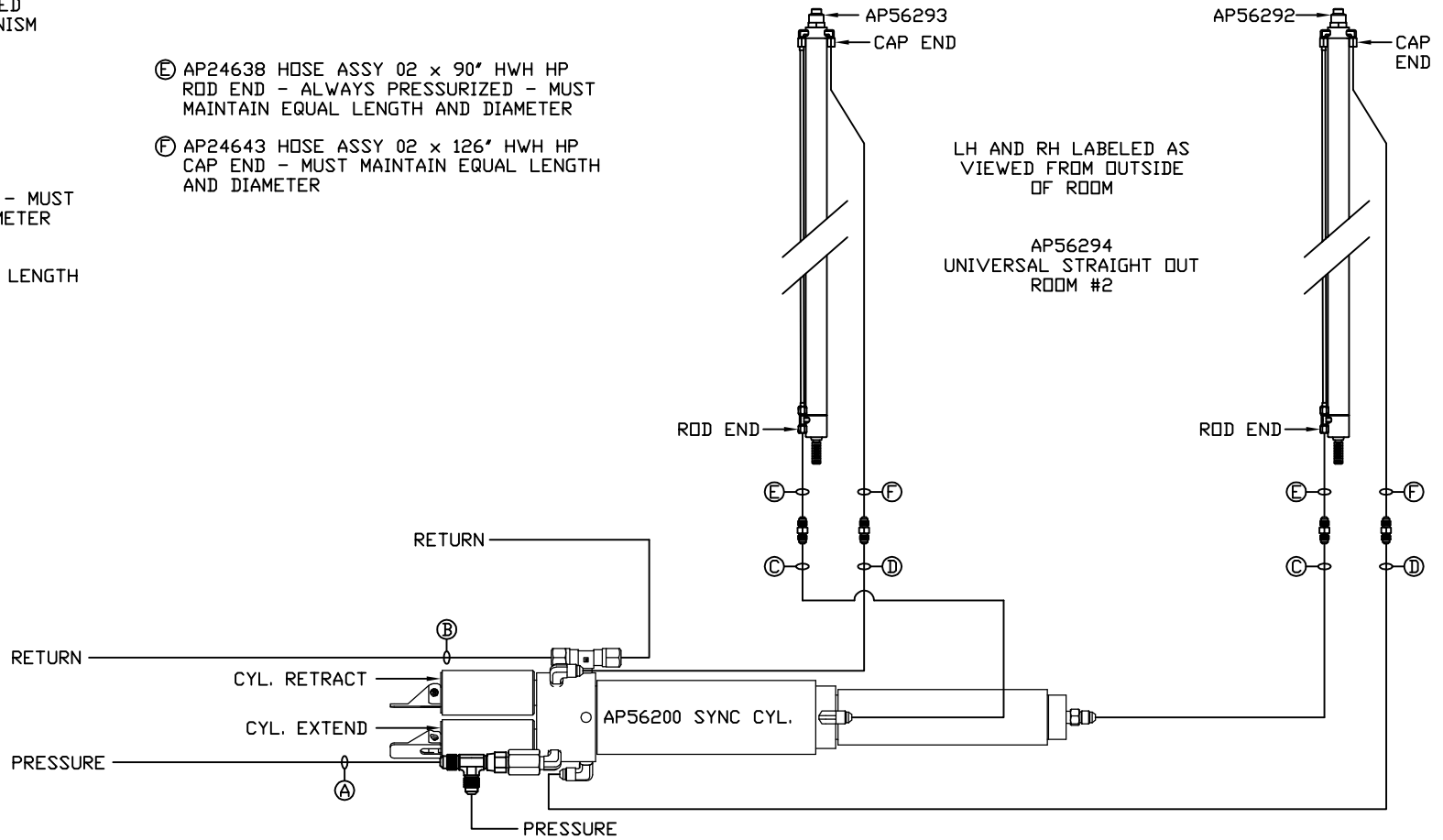
NOTE: INSTALLATION MUST CONFORM TO GOOD SHOP PRACTICES, SAE STANDARDS, RVIA STANDARDS, AND OTHER APPLICABLE STANDARDS.

MP71101 B/D
09JUN17

NOTE: HOSES (E) AND (F) ARE INCLUDED WITH THE ROOM EXTENSION MECHANISM

- (A) HOSE ASSY 04
PRESSURE
- (B) .375" TUBING
RETURN
- (C) HOSE ASSY 03
ROD END - ALWAYS PRESSURIZED - MUST MAINTAIN EQUAL LENGTH AND DIAMETER
- (D) HOSE ASSY 04
CAP END - MUST MAINTAIN EQUAL LENGTH AND DIAMETER

- (E) AP24638 HOSE ASSY 02 x 90" HWH HP
ROD END - ALWAYS PRESSURIZED - MUST MAINTAIN EQUAL LENGTH AND DIAMETER
- (F) AP24643 HOSE ASSY 02 x 126" HWH HP
CAP END - MUST MAINTAIN EQUAL LENGTH AND DIAMETER

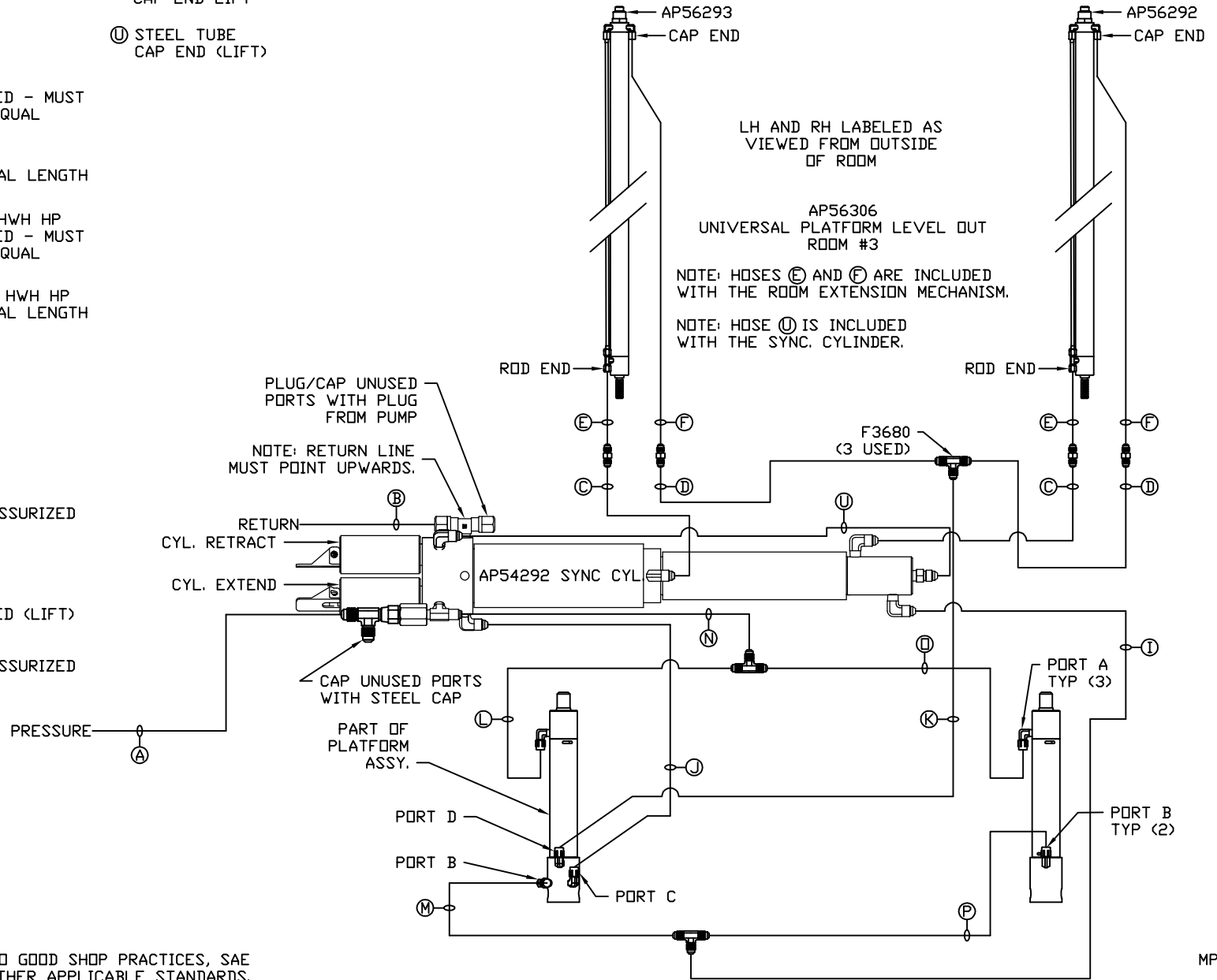


NOTE: INSTALLATION MUST CONFORM TO GOOD SHOP PRACTICES, SAE STANDARDS, RVIA STANDARDS, AND OTHER APPLICABLE STANDARDS.

MP71101 C/D
09JUN17

- Ⓐ HOSE ASSY 04
PRESSURE
- Ⓑ .375" OD NYLON TUBING
RETURN
- Ⓒ HOSE ASSY 03
ROD END - ALWAYS PRESSURIZED - MUST
BE HIGH PRESSURE HOSES OF EQUAL
LENGTH AND DIAMETER
- Ⓓ HOSE ASSY 04
CAP END - MUST MAINTAIN EQUAL LENGTH
AND DIAMETER
- Ⓔ AP24638 HOSE ASSY 02 x 90' HWH HP
ROD END - ALWAYS PRESSURIZED - MUST
BE HIGH PRESSURE HOSES OF EQUAL
LENGTH AND DIAMETER
- Ⓕ AP24643 HOSE ASSY 02 x 126' HWH HP
CAP END - MUST MAINTAIN EQUAL LENGTH
AND DIAMETER
- Ⓖ HOSE ASSY 04
CAP END (LIFT)
- Ⓙ HOSE ASSY 03
CAP END (ROOM)
- Ⓚ HOSE ASSY 03
CAP END (ROOM)
- Ⓛ HOSE ASSY 03
ROD END (LIFT) - ALWAYS PRESSURIZED
- Ⓜ HOSE ASSY 03
CAP END (LIFT)
- Ⓝ HOSE ASSY 04
ROD END - ALWAYS PRESSURIZED (LIFT)
- Ⓟ HOSE ASSY 03
ROD END (LIFT) - ALWAYS PRESSURIZED

- Ⓟ HOSE ASSY 03
CAP END LIFT
- Ⓠ STEEL TUBE
CAP END (LIFT)



NOTE: INSTALLATION MUST CONFORM TO GOOD SHOP PRACTICES, SAE
STANDARDS, RVIA STANDARDS, AND OTHER APPLICABLE STANDARDS.

MP71101 D/D
09JUN17