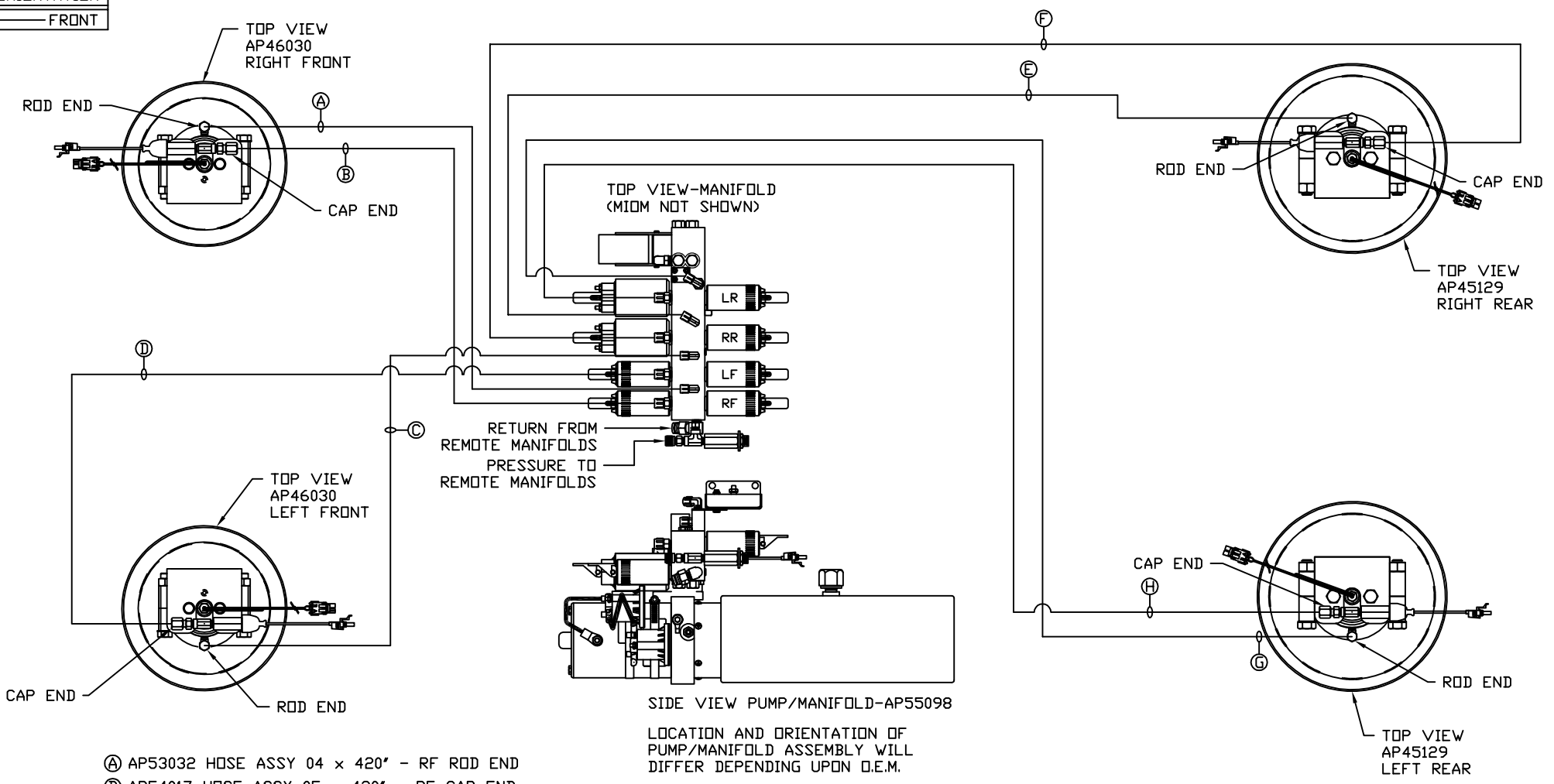


ORIENTATION
← FRONT



- Ⓐ AP53032 HOSE ASSY 04 x 420' - RF ROD END
- Ⓑ AP54017 HOSE ASSY 05 x 420' - RF CAP END
- Ⓒ AP6116 HOSE ASSY 04 x 240' - LF ROD END
- Ⓓ AP42092 HOSE ASSY 05 x 240' - LF CAP END
- Ⓔ AP57678 HOSE ASSY 04 x 780' - RR ROD END
- Ⓕ AP57679 HOSE ASSY 05 x 780' - RR CAP END
- Ⓖ AP29767 HOSE ASSY 04 x 600' - LR ROD END
- Ⓗ AP54020 HOSE ASSY 05 x 600' - LR CAP END

NOTE: INSTALLATION MUST CONFORM TO GOOD SHOP PRACTICES, SAE STANDARDS, RVIA STANDARDS, AND OTHER APPLICABLE STANDARDS.

LEVELING SYSTEM: AP57658

		HWH I-80 EXIT 267 SOUTH RT 1 MOSCOW, IOWA 52760	
		SCALE 1:6	DATE 12JUN17
		DRAWN BY .	
HYD CONN DIAGRAM			
NO.	DATE	REVISION	
THE INFORMATION DISCLOSED ON THIS DRAWING IS CONFIDENTIAL AND MUST NOT BE DISCLOSED OR USED IN ANY MANNER WHICH WILL BE DETRIMENTAL TO THE HWH CORPORATION			
ITB		DRAWING NUMBER MP71102 A/B	

