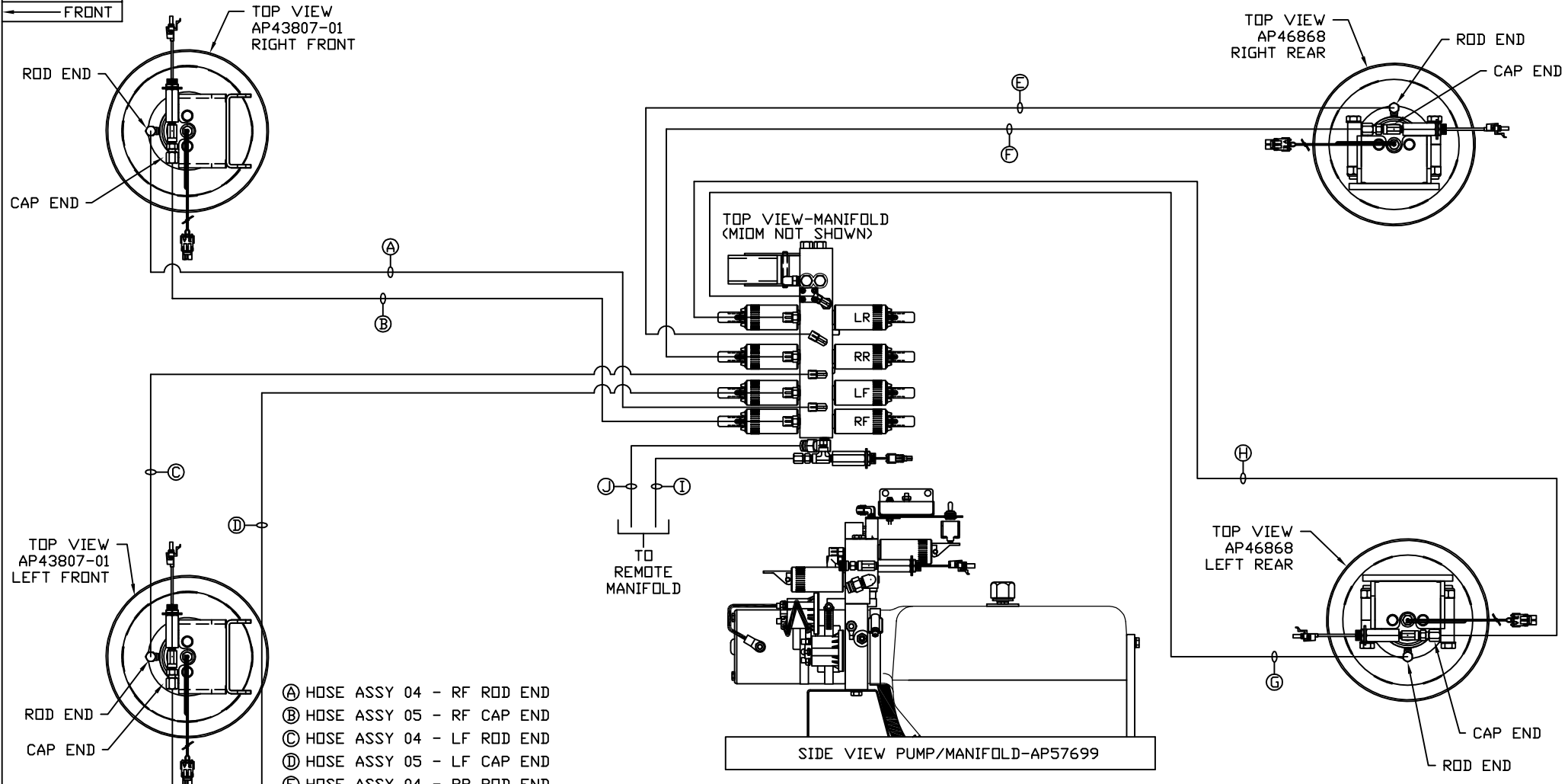


ORIENTATION
← FRONT



- Ⓐ HOSE ASSY 04 - RF ROD END
- Ⓑ HOSE ASSY 05 - RF CAP END
- Ⓒ HOSE ASSY 04 - LF ROD END
- Ⓓ HOSE ASSY 05 - LF CAP END
- Ⓔ HOSE ASSY 04 - RR ROD END
- Ⓕ HOSE ASSY 05 - RR CAP END
- Ⓖ HOSE ASSY 04 - LR ROD END
- Ⓗ HOSE ASSY 05 - LR CAP END
- Ⓢ HOSE ASSY 04 - PRESSURE TO REMOTE
- Ⓣ NYLON TUBING 3/8" - RETURN FROM REMOTE

NOTE: INSTALLATION MUST CONFORM TO GOOD SHOP PRACTICES, SAE STANDARDS, RVIA STANDARDS, AND OTHER APPLICABLE STANDARDS.

LEVELING SYSTEM: AP57685

NO.	DATE	REVISION

THE INFORMATION DISCLOSED ON THIS DRAWING IS CONFIDENTIAL AND MUST NOT BE DISCLOSED OR USED IN ANY MANNER WHICH WILL BE DETRIMENTAL TO THE HWH CORPORATION

HWH I-80 EXIT 267 SOUTH
RT 1 MOSCOW, IDWA 52760

SCALE 1:6 DATE 14JUN17 DRAWN BY .

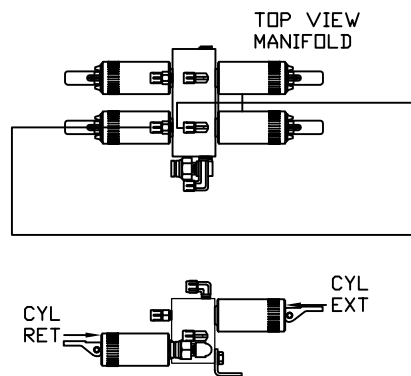
HYD CONN DIAGRAM

4-STAR TRAILER DRAWING NUMBER MP71107 A/C

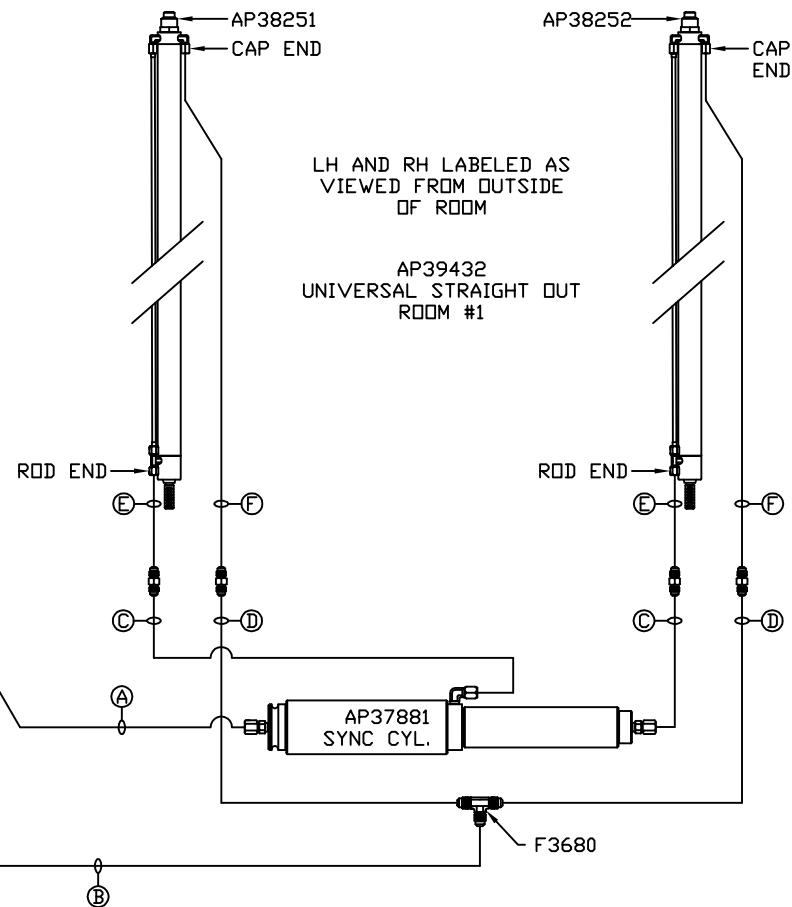
NOTE: HOSES (E) AND (F) ARE INCLUDED WITH THE ROOM EXTENSION MECHANISM

- (A) HOSE ASSY 04
ROD END - ALWAYS PRESSURIZED
- (B) HOSE ASSY 04
CAP END
- (C) HOSE ASSY 03
ROD END - ALWAYS PRESSURIZED - MUST MAINTAIN EQUAL LENGTH AND DIAMETER

- (D) HOSE ASSY 04
CAP END - MUST MAINTAIN EQUAL LENGTH AND DIAMETER
- (E) AP24632 HOSE ASSY 02 x 48" HWH HP
ROD END - ALWAYS PRESSURIZED - MUST BE HIGH PRESSURE HOSES OF EQUAL LENGTH AND DIAMETER
- (F) AP24636 HOSE ASSY 02 x 84" HWH HP
CAP END - MUST MAINTAIN EQUAL LENGTH AND DIAMETER



SIDE VIEW MANIFOLD-AP50289-02
LOCATION AND ORIENTATION OF
MANIFOLD ASSEMBLY WILL
DIFFER DEPENDING UPON O.E.M.



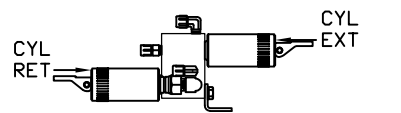
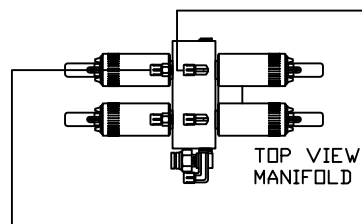
NOTE: INSTALLATION MUST CONFORM TO GOOD SHOP PRACTICES, SAE STANDARDS, RVIA STANDARDS, AND OTHER APPLICABLE STANDARDS.

MP71107 B/C
14JUN17

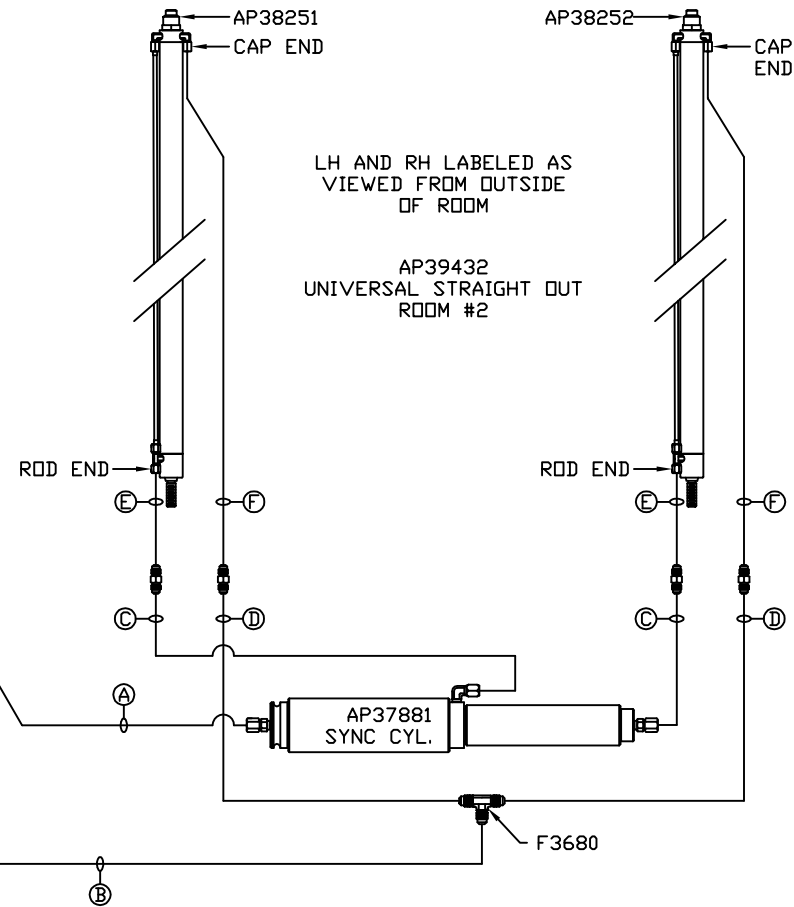
NOTE: HOSES (E) AND (F) ARE INCLUDED WITH THE ROOM EXTENSION MECHANISM

- (A) HOSE ASSY 04
ROD END - ALWAYS PRESSURIZED
- (B) HOSE ASSY 04
CAP END
- (C) HOSE ASSY 03
ROD END - ALWAYS PRESSURIZED - MUST MAINTAIN EQUAL LENGTH AND DIAMETER

- (D) HOSE ASSY 04
CAP END - MUST MAINTAIN EQUAL LENGTH AND DIAMETER
- (E) AP24632 HOSE ASSY 02 x 48" HWH HP
ROD END - ALWAYS PRESSURIZED - MUST BE HIGH PRESSURE HOSES OF EQUAL LENGTH AND DIAMETER
- (F) AP24636 HOSE ASSY 02 x 84" HWH HP
CAP END - MUST MAINTAIN EQUAL LENGTH AND DIAMETER



LOCATION AND ORIENTATION OF MANIFOLD ASSEMBLY WILL DIFFER DEPENDING UPON O.E.M.



NOTE: INSTALLATION MUST CONFORM TO GOOD SHOP PRACTICES, SAE STANDARDS, RVIA STANDARDS, AND OTHER APPLICABLE STANDARDS.

MP71107 C/C
14JUN17