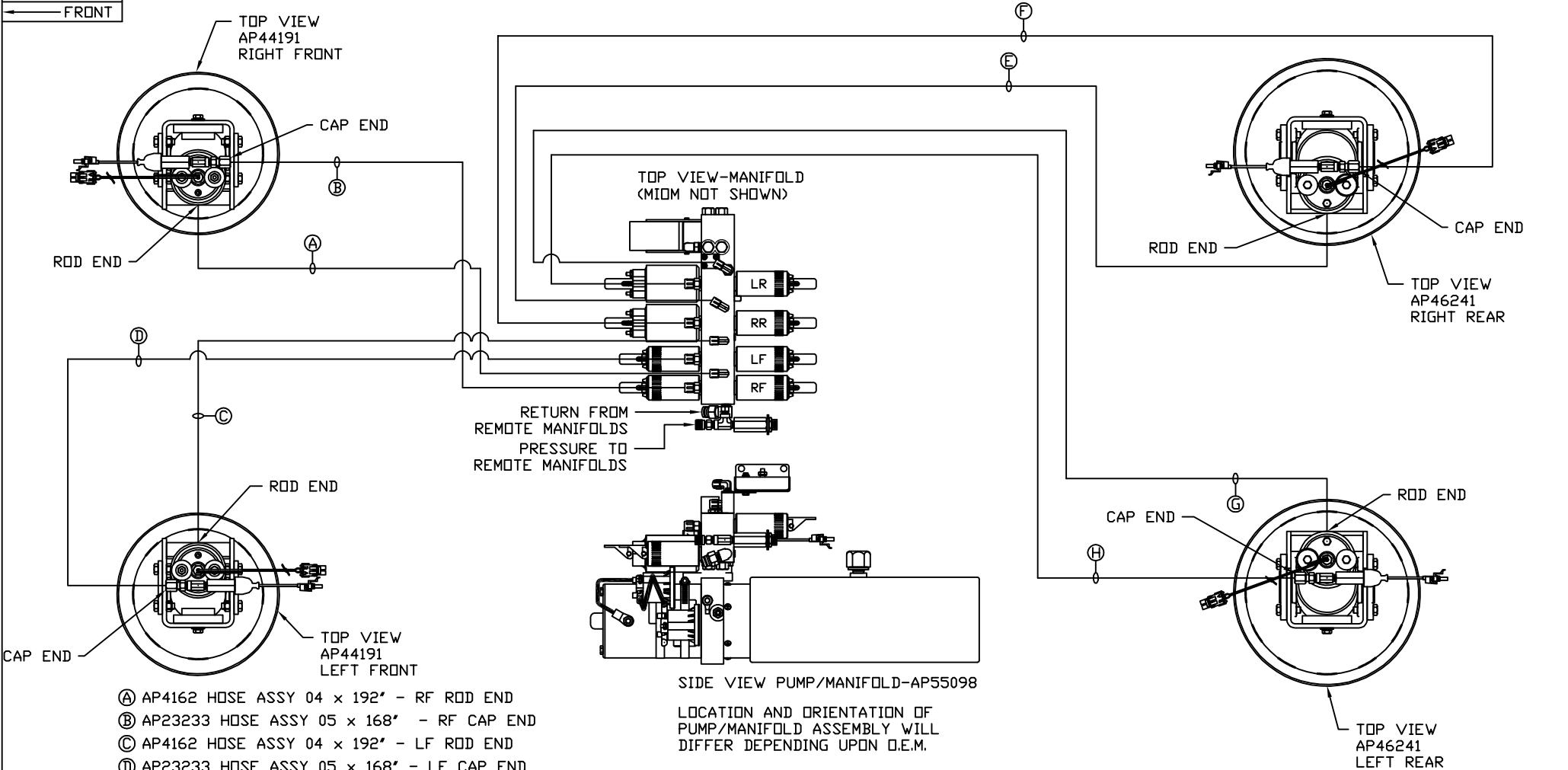


ORIENTATION  
← FRONT



- Ⓐ AP4162 HOSE ASSY 04 x 192' - RF ROD END
- Ⓑ AP23233 HOSE ASSY 05 x 168' - RF CAP END
- Ⓒ AP4162 HOSE ASSY 04 x 192' - LF ROD END
- Ⓓ AP23233 HOSE ASSY 05 x 168' - LF CAP END
- Ⓔ AP7178 HOSE ASSY 04 x 504' - RR ROD END
- Ⓕ AP25654 HOSE ASSY 05 x 504' - RR CAP END
- Ⓖ AP6388 HOSE ASSY 04 x 468' - LR ROD END
- Ⓗ AP54018 HOSE ASSY 05 x 444' - LR CAP END

NOTE: INSTALLATION MUST CONFORM TO GOOD SHOP PRACTICES, SAE STANDARDS, RVIA STANDARDS, AND OTHER APPLICABLE STANDARDS.

LEVELING SYSTEM: AP56048

		HWH I-80 EXIT 267 SOUTH RT 1 MOSCOW, IOWA 52760	
		SCALE 1:6	DATE 12SEP17
		DRAWN BY .	
HYD CONN DIAGRAM			
NO.	DATE	REVISION	
THE INFORMATION DISCLOSED ON THIS DRAWING IS CONFIDENTIAL AND MUST NOT BE DISCLOSED OR USED IN ANY MANNER WHICH WILL BE DETRIMENTAL TO THE HWH CORPORATION			
FARBER			DRAWING NUMBER MP71112 A/E

NOTE: HOSES (E) AND (F) ARE INCLUDED WITH THE ROOM EXTENSION MECHANISM

(A) HOSE ASSY 04  
PRESSURE

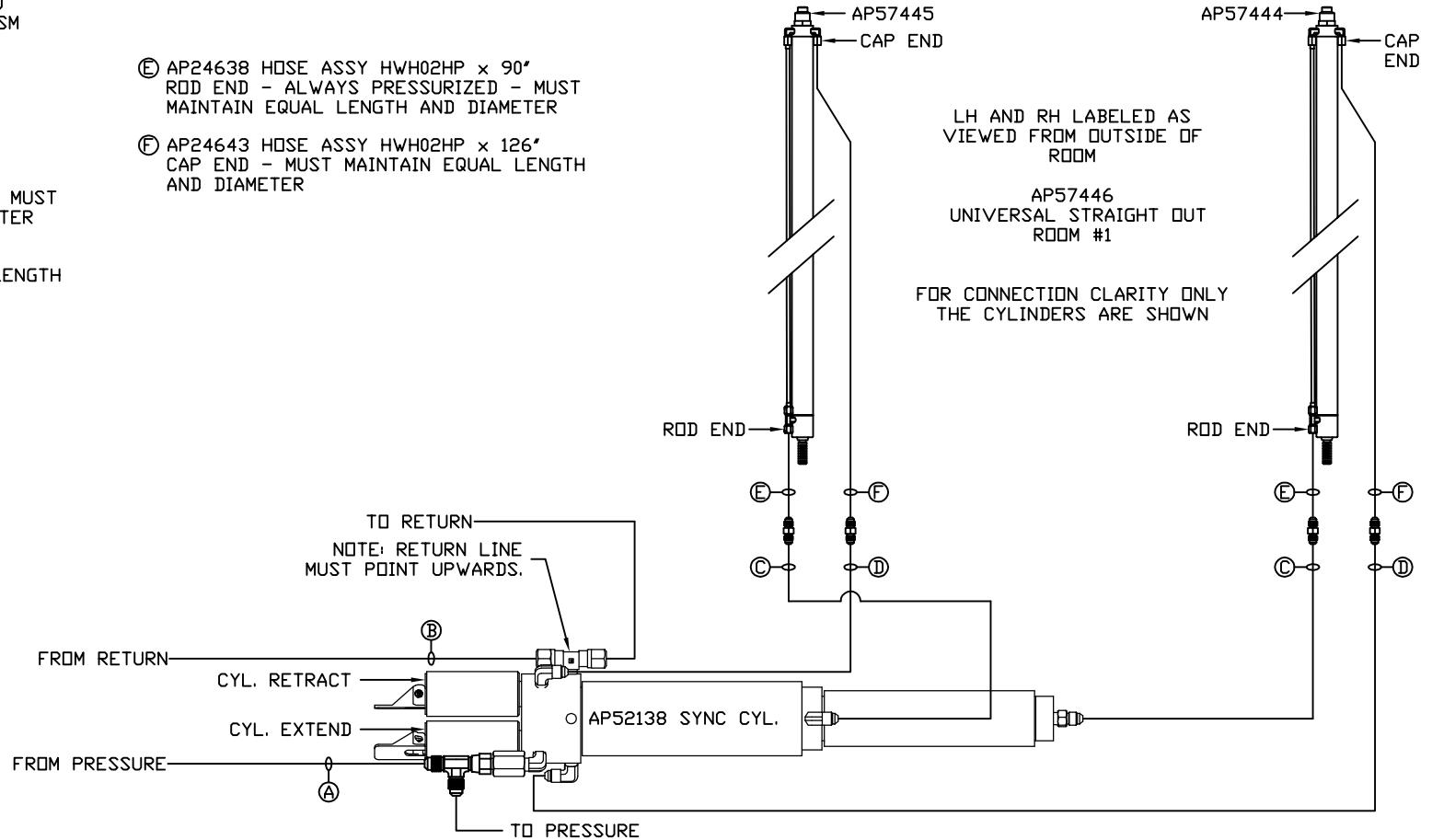
(B) .375" TUBING  
RETURN

(C) HOSE ASSY 03  
ROD END - ALWAYS PRESSURIZED - MUST MAINTAIN EQUAL LENGTH AND DIAMETER

(D) HOSE ASSY 04  
CAP END - MUST MAINTAIN EQUAL LENGTH AND DIAMETER

(E) AP24638 HOSE ASSY HWH02HP x 90"  
ROD END - ALWAYS PRESSURIZED - MUST MAINTAIN EQUAL LENGTH AND DIAMETER

(F) AP24643 HOSE ASSY HWH02HP x 126"  
CAP END - MUST MAINTAIN EQUAL LENGTH AND DIAMETER



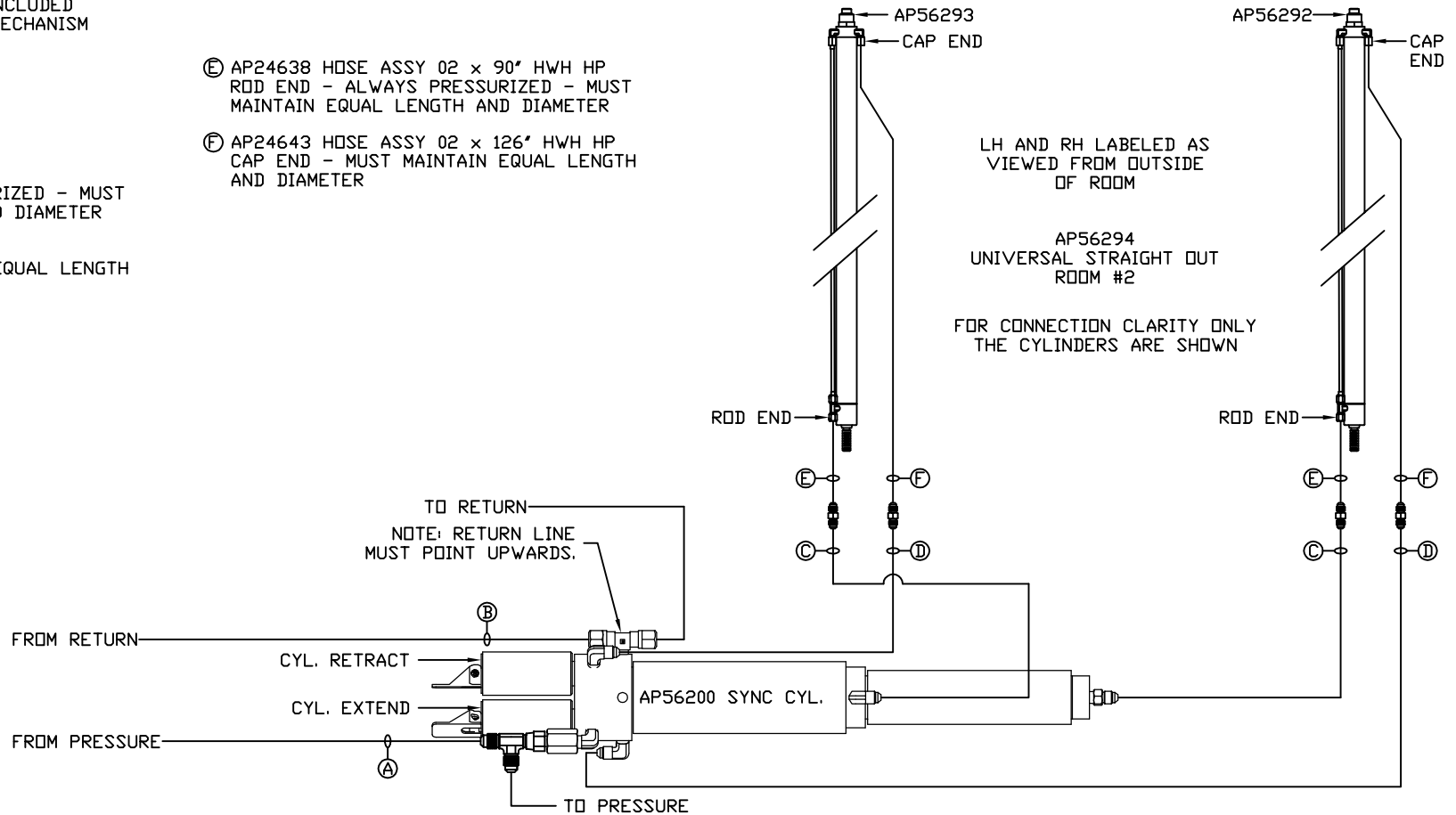
NOTE: INSTALLATION MUST CONFORM TO GOOD SHOP PRACTICES, SAE STANDARDS, RVIA STANDARDS, AND OTHER APPLICABLE STANDARDS.

MP71112 B/E  
12SEP17

NOTE: HOSES (E) AND (F) ARE INCLUDED WITH THE ROOM EXTENSION MECHANISM

- (A) HOSE ASSY 04 PRESSURE
- (B) .375" TUBING RETURN
- (C) HOSE ASSY 03 ROD END - ALWAYS PRESSURIZED - MUST MAINTAIN EQUAL LENGTH AND DIAMETER
- (D) HOSE ASSY 04 CAP END - MUST MAINTAIN EQUAL LENGTH AND DIAMETER

- (E) AP24638 HOSE ASSY 02 x 90" HWH HP ROD END - ALWAYS PRESSURIZED - MUST MAINTAIN EQUAL LENGTH AND DIAMETER
- (F) AP24643 HOSE ASSY 02 x 126" HWH HP CAP END - MUST MAINTAIN EQUAL LENGTH AND DIAMETER



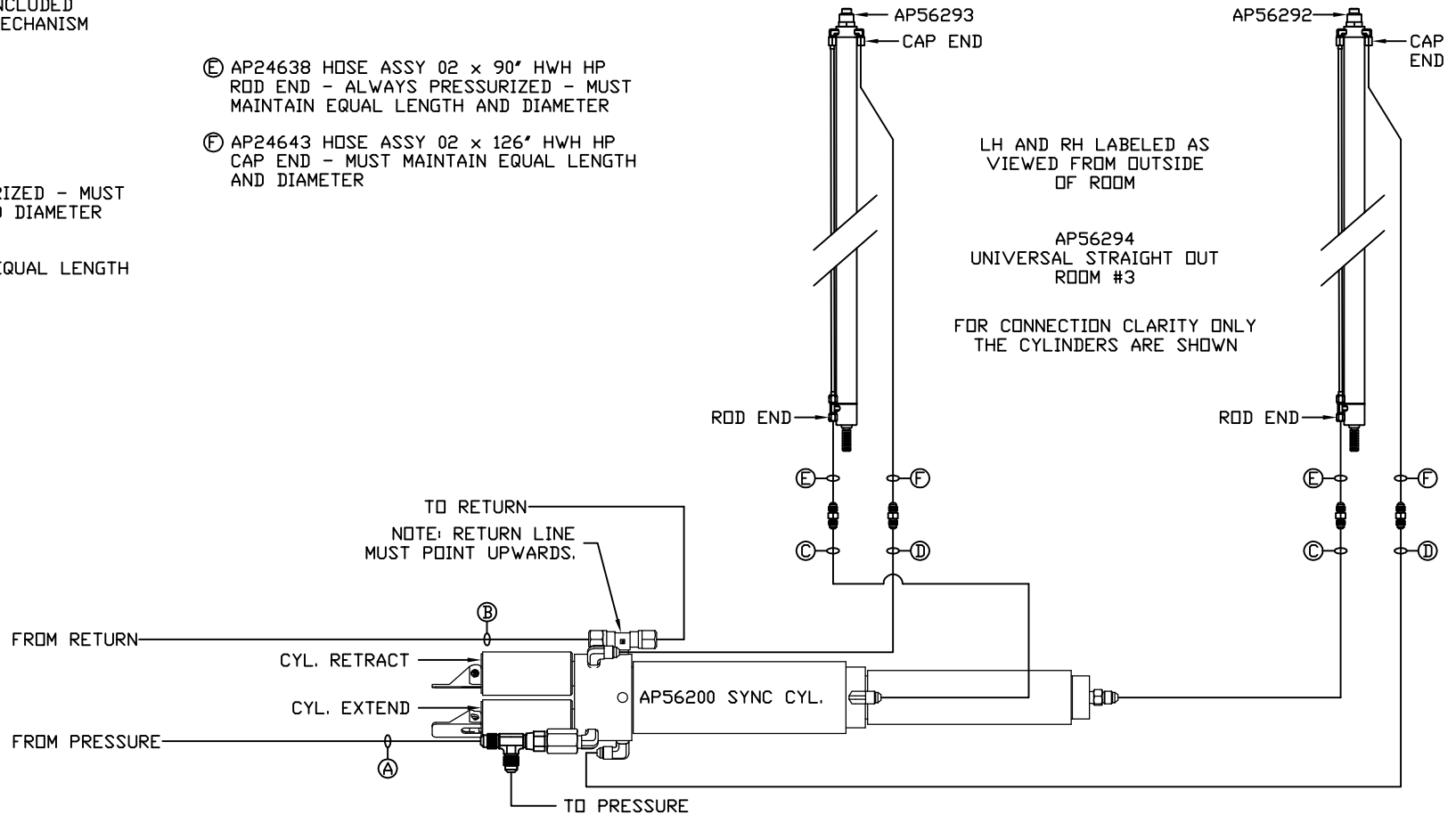
NOTE: INSTALLATION MUST CONFORM TO GOOD SHOP PRACTICES, SAE STANDARDS, RVIA STANDARDS, AND OTHER APPLICABLE STANDARDS.

MP71112 C/E  
12SEP17

NOTE: HOSES (E) AND (F) ARE INCLUDED WITH THE ROOM EXTENSION MECHANISM

- (A) HOSE ASSY 04 PRESSURE
- (B) .375" TUBING RETURN
- (C) HOSE ASSY 03 ROD END - ALWAYS PRESSURIZED - MUST MAINTAIN EQUAL LENGTH AND DIAMETER
- (D) HOSE ASSY 04 CAP END - MUST MAINTAIN EQUAL LENGTH AND DIAMETER

- (E) AP24638 HOSE ASSY 02 x 90" HWH HP ROD END - ALWAYS PRESSURIZED - MUST MAINTAIN EQUAL LENGTH AND DIAMETER
- (F) AP24643 HOSE ASSY 02 x 126" HWH HP CAP END - MUST MAINTAIN EQUAL LENGTH AND DIAMETER



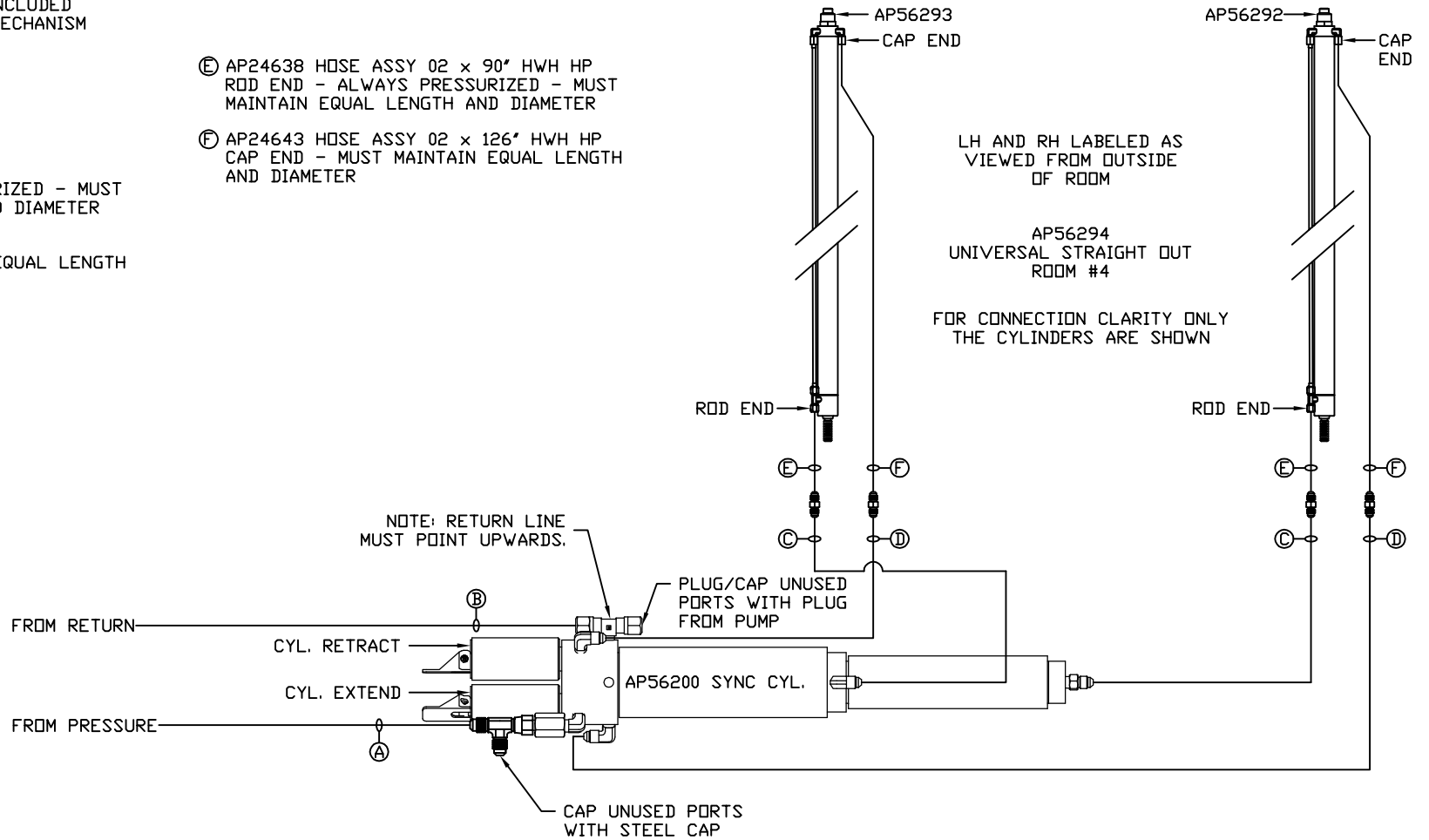
NOTE: INSTALLATION MUST CONFORM TO GOOD SHOP PRACTICES, SAE STANDARDS, RVIA STANDARDS, AND OTHER APPLICABLE STANDARDS.

MP71112 D/E  
12SEP17

NOTE: HOSES ⑤ AND ⑥ ARE INCLUDED WITH THE ROOM EXTENSION MECHANISM

- ① HOSE ASSY 04 PRESSURE
- ② .375" TUBING RETURN
- ③ HOSE ASSY 03 ROD END - ALWAYS PRESSURIZED - MUST MAINTAIN EQUAL LENGTH AND DIAMETER
- ④ HOSE ASSY 04 CAP END - MUST MAINTAIN EQUAL LENGTH AND DIAMETER

- ⑤ AP24638 HOSE ASSY 02 x 90" HWH HP ROD END - ALWAYS PRESSURIZED - MUST MAINTAIN EQUAL LENGTH AND DIAMETER
- ⑥ AP24643 HOSE ASSY 02 x 126" HWH HP CAP END - MUST MAINTAIN EQUAL LENGTH AND DIAMETER



NOTE: INSTALLATION MUST CONFORM TO GOOD SHOP PRACTICES, SAE STANDARDS, RVIA STANDARDS, AND OTHER APPLICABLE STANDARDS.

MP71112 E/E  
12SEP17