

NOTE: HOSES ③ AND ④ ARE INCLUDED
WITH THE ROOM EXTENSION MECHANISM.

① HOSE ASSY 04
PRESSURE

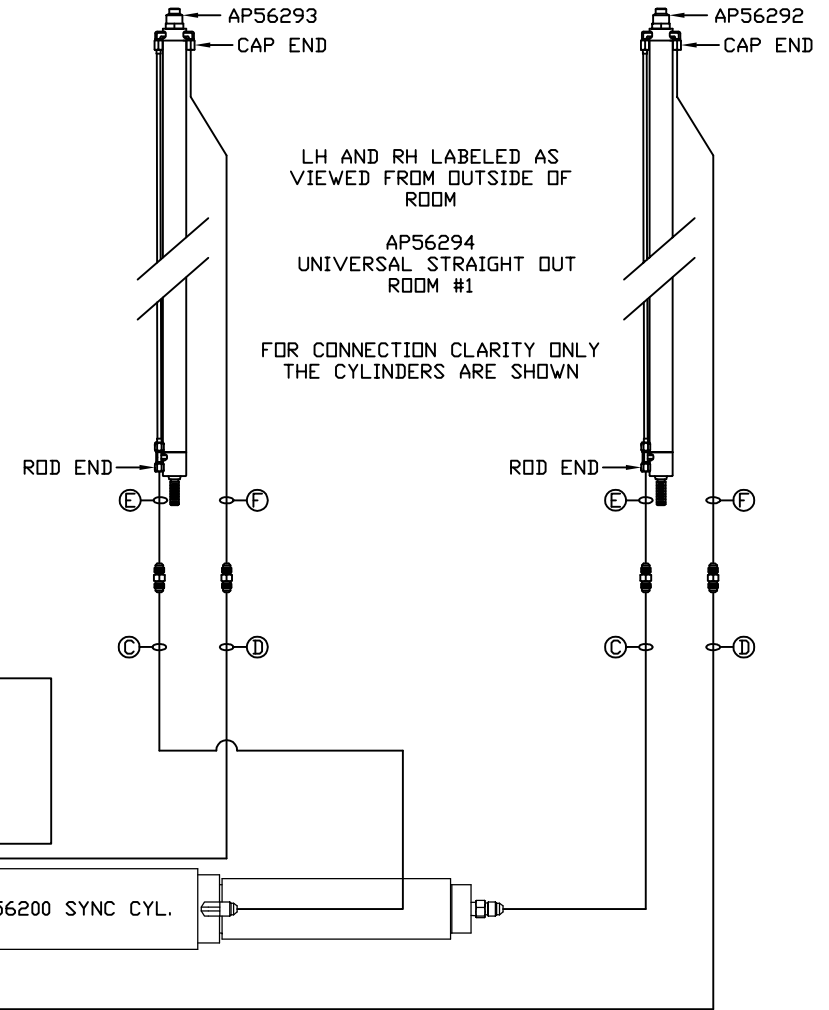
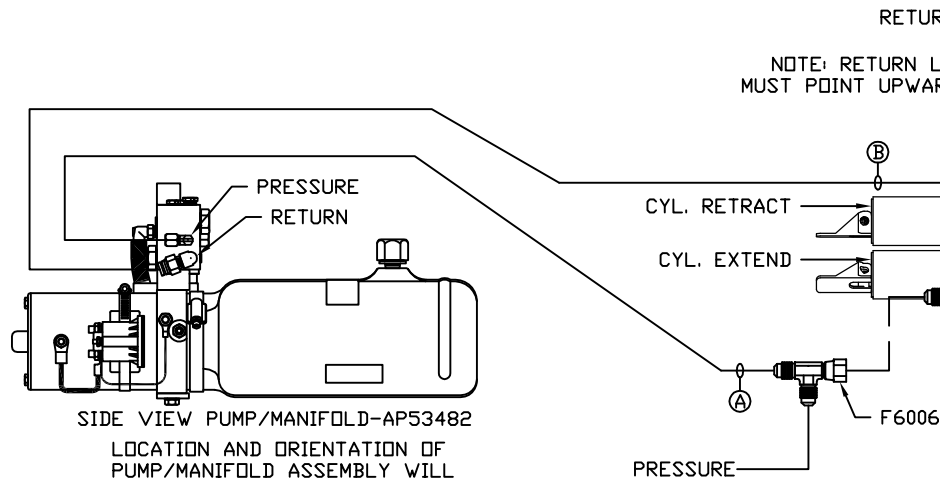
② RETURN LINE 3/8
RETURN

③ HOSE ASSY 03
ROD END - ALWAYS PRESSURIZED - MUST
MAINTAIN EQUAL LENGTH AND DIAMETER

④ HOSE ASSY 04
CAP END - MUST MAINTAIN EQUAL LENGTH
AND DIAMETER

⑤ AP24638 HOSE ASSY HWH02HP x 90'
CAP END - MUST MAINTAIN EQUAL LENGTH
AND DIAMETER

⑥ AP24643 HOSE ASSY HWH02HP x 126'
ROD END - ALWAYS PRESSURIZED - MUST
MAINTAIN EQUAL LENGTH AND DIAMETER



| | | | | | | | |
|--|------|----------|------------------|--------|--------------|--|--|
| | | | HWH | | | I-80 EXIT 267 SOUTH RT 1 MOSCOW, IOWA 52760 | |
| | | | SCALE 1:6 | | DATE 12SEP17 | DRAWN BY . | |
| | | | HYD CONN DIAGRAM | | | | |
| NO. | DATE | REVISION | | | | | |
| THE INFORMATION DISCLOSED ON THIS DRAWING IS CONFIDENTIAL AND MUST NOT BE DISCLOSED OR USED IN ANY MANNER WHICH WILL BE DETRIMENTAL TO THE HWH CORPORATION | | | | FARBER | | DRAWING NUMBER MP71115 A/D | |

NOTE: INSTALLATION MUST CONFORM TO GOOD SHOP PRACTICES, SAE
STANDARDS, RVIA STANDARDS, AND OTHER APPLICABLE STANDARDS.

NOTE: HOSES ⑤ AND ⑥ ARE INCLUDED
WITH THE ROOM EXTENSION MECHANISM.

④ HOSE ASSY 04
PRESSURE

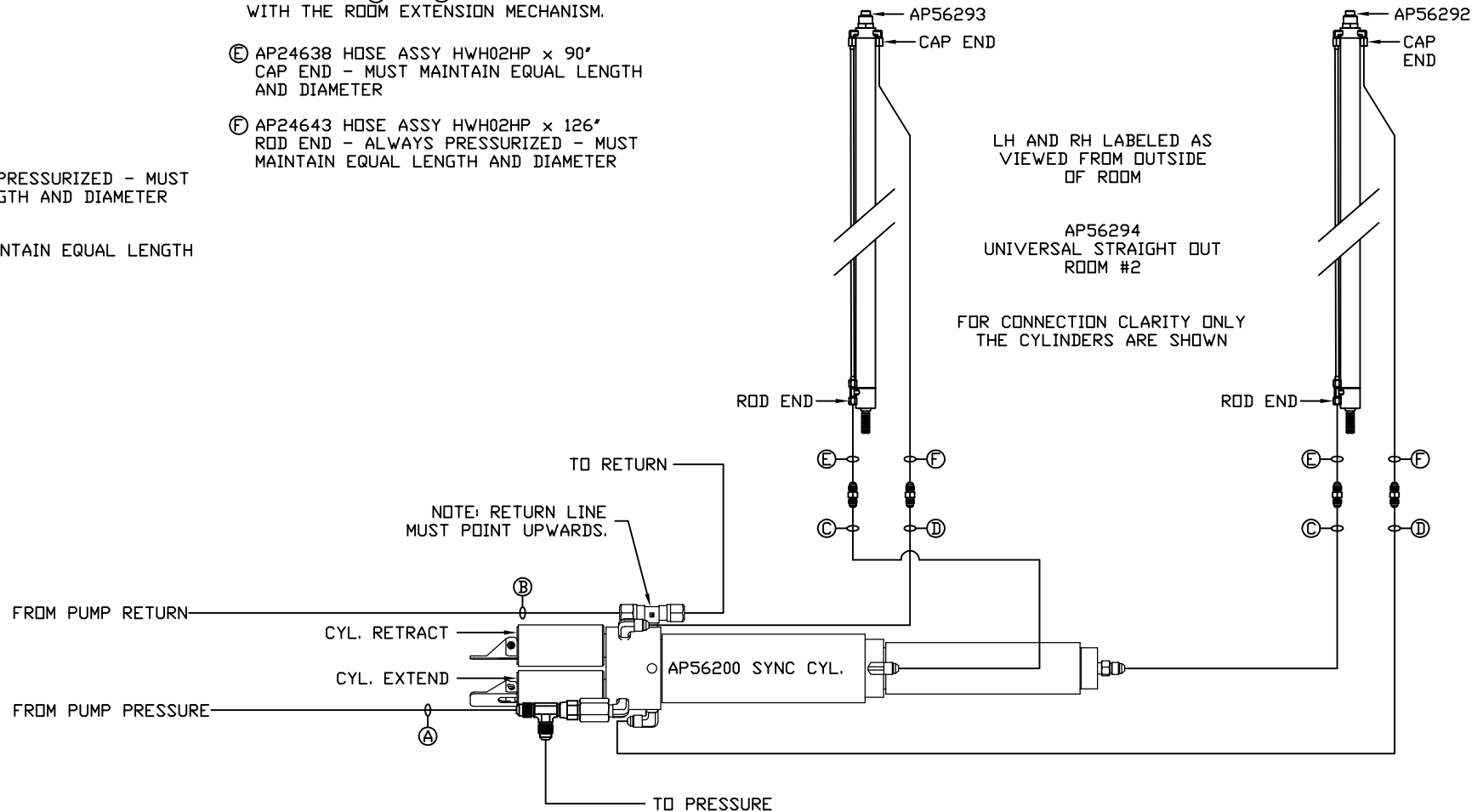
③ RETURN LINE 3/8
RETURN

② HOSE ASSY 03
ROD END - ALWAYS PRESSURIZED - MUST
MAINTAIN EQUAL LENGTH AND DIAMETER

① HOSE ASSY 04
CAP END - MUST MAINTAIN EQUAL LENGTH
AND DIAMETER

⑤ AP24638 HOSE ASSY HWH02HP x 90'
CAP END - MUST MAINTAIN EQUAL LENGTH
AND DIAMETER

⑥ AP24643 HOSE ASSY HWH02HP x 126'
ROD END - ALWAYS PRESSURIZED - MUST
MAINTAIN EQUAL LENGTH AND DIAMETER



NOTE: INSTALLATION MUST CONFORM TO GOOD SHOP PRACTICES, SAE
STANDARDS, RVIA STANDARDS, AND OTHER APPLICABLE STANDARDS.

MP71115 B/D
12SEP17

NOTE: HOSES ⑤ AND ⑥ ARE INCLUDED
WITH THE ROOM EXTENSION MECHANISM.

④ HOSE ASSY 04
PRESSURE

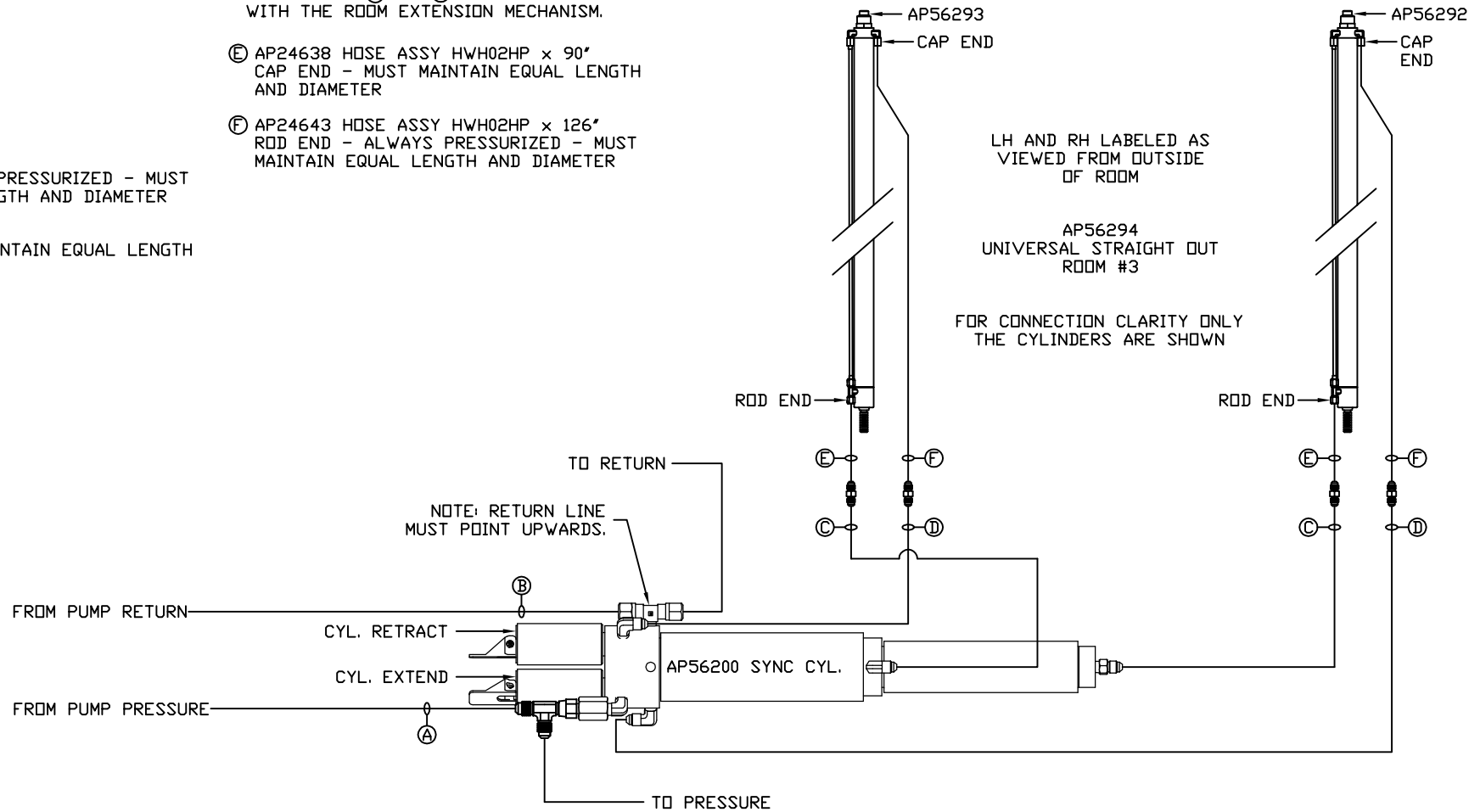
③ RETURN LINE 3/8
RETURN

② HOSE ASSY 03
ROD END - ALWAYS PRESSURIZED - MUST
MAINTAIN EQUAL LENGTH AND DIAMETER

① HOSE ASSY 04
CAP END - MUST MAINTAIN EQUAL LENGTH
AND DIAMETER

⑤ AP24638 HOSE ASSY HWH02HP x 90'
CAP END - MUST MAINTAIN EQUAL LENGTH
AND DIAMETER

⑥ AP24643 HOSE ASSY HWH02HP x 126'
ROD END - ALWAYS PRESSURIZED - MUST
MAINTAIN EQUAL LENGTH AND DIAMETER



NOTE: INSTALLATION MUST CONFORM TO GOOD SHOP PRACTICES, SAE
STANDARDS, RVIA STANDARDS, AND OTHER APPLICABLE STANDARDS.

MP71115 C/D
12SEP17

NOTE: HOSES ⑤ AND ⑥ ARE INCLUDED
WITH THE ROOM EXTENSION MECHANISM.

④ HOSE ASSY 04
PRESSURE

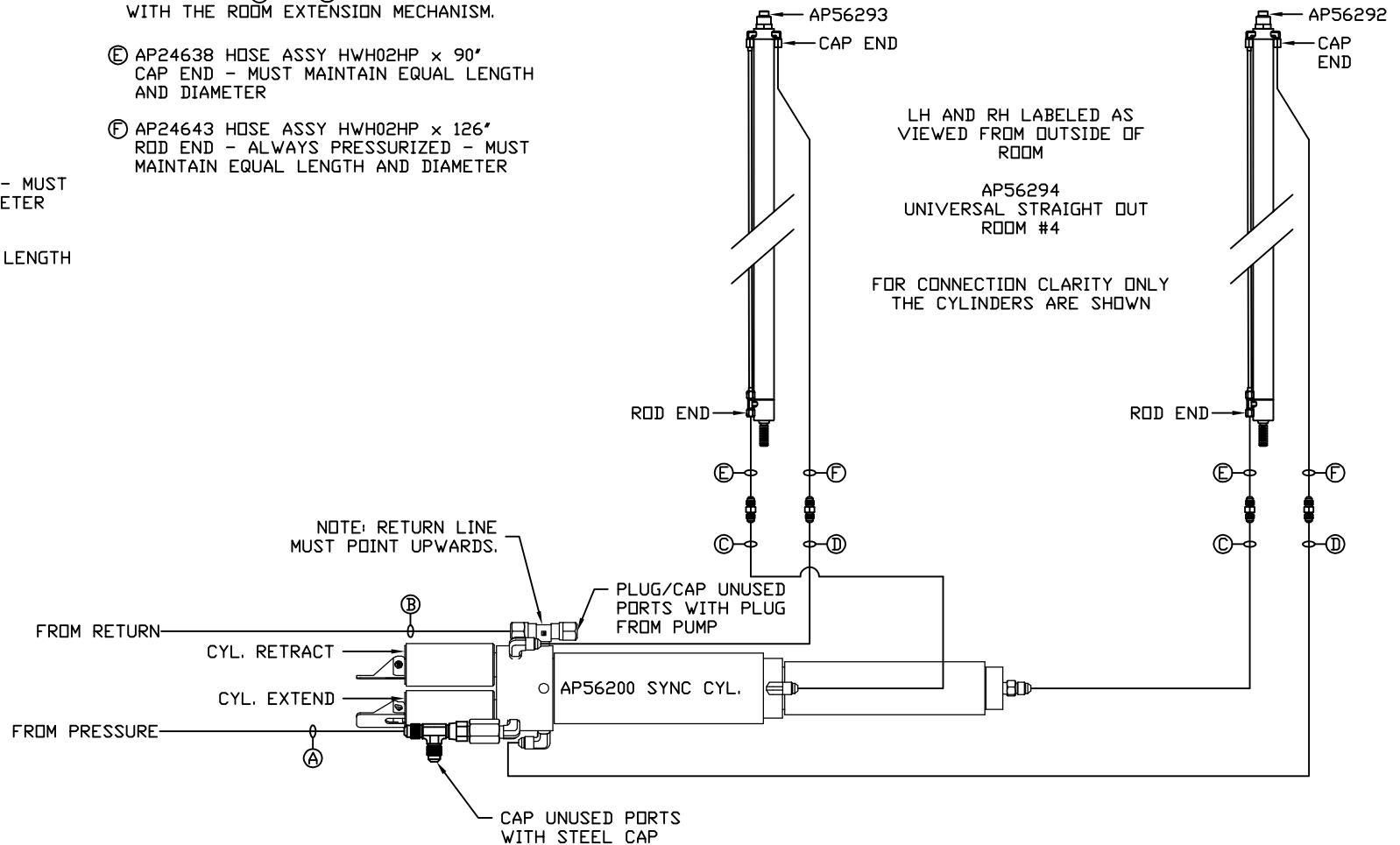
③ RETURN LINE 3/8
RETURN

② HOSE ASSY 03
ROD END - ALWAYS PRESSURIZED - MUST
MAINTAIN EQUAL LENGTH AND DIAMETER

① HOSE ASSY 04
CAP END - MUST MAINTAIN EQUAL LENGTH
AND DIAMETER

⑤ AP24638 HOSE ASSY HWH02HP x 90'
CAP END - MUST MAINTAIN EQUAL LENGTH
AND DIAMETER

⑥ AP24643 HOSE ASSY HWH02HP x 126'
ROD END - ALWAYS PRESSURIZED - MUST
MAINTAIN EQUAL LENGTH AND DIAMETER



NOTE: INSTALLATION MUST CONFORM TO GOOD SHOP PRACTICES, SAE
STANDARDS, RVIA STANDARDS, AND OTHER APPLICABLE STANDARDS.

MP71115 D/D
12SEP17