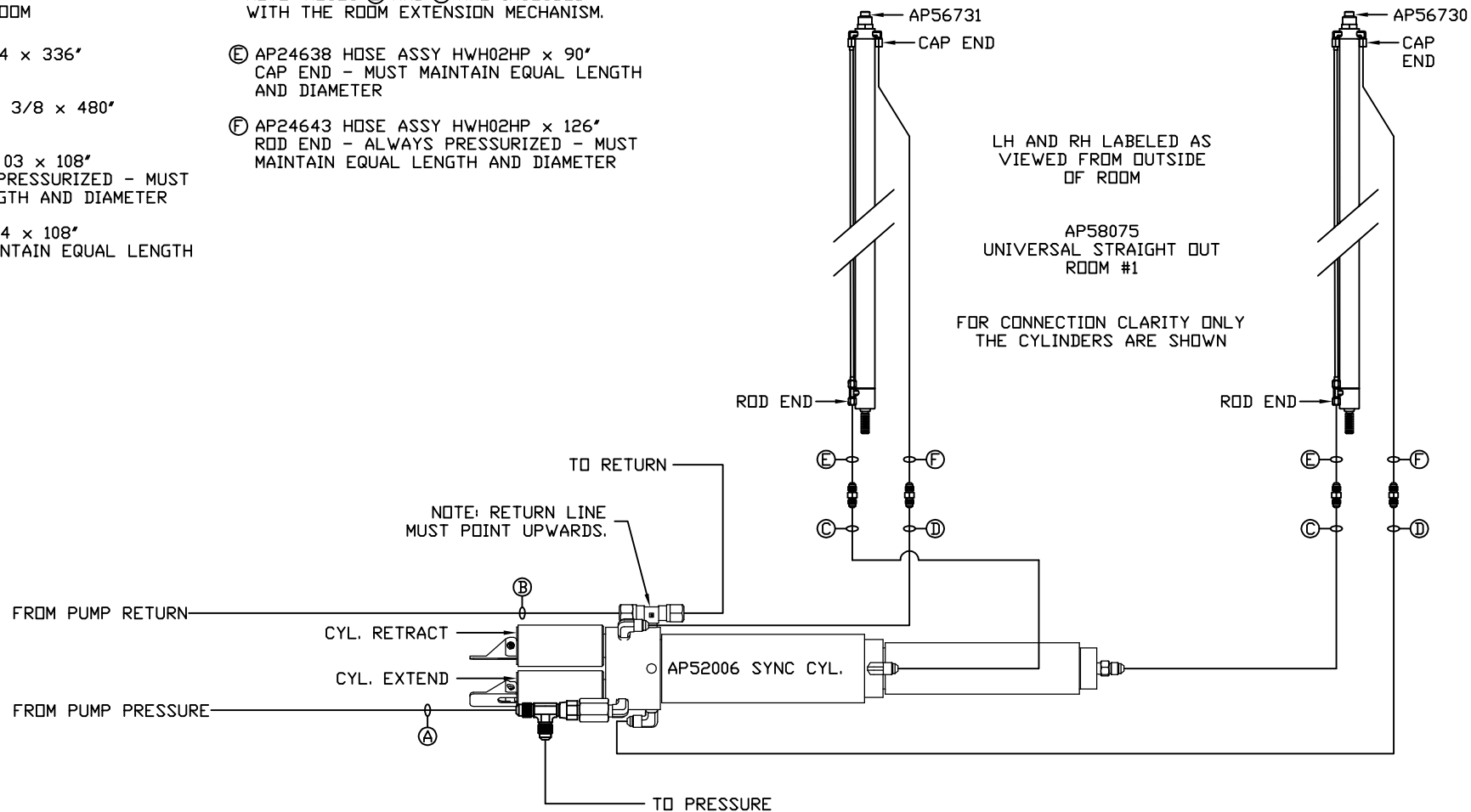


AP58074 HOSE KIT 2 ROOM

- Ⓐ AP5561 HOSE ASSY 04 x 336' PRESSURE
- Ⓑ P29287 RETURN LINE 3/8 x 480' RETURN
- Ⓒ AP49244 HOSE ASSY 03 x 108' ROD END - ALWAYS PRESSURIZED - MUST MAINTAIN EQUAL LENGTH AND DIAMETER
- Ⓓ AP4074 HOSE ASSY 04 x 108' CAP END - MUST MAINTAIN EQUAL LENGTH AND DIAMETER

NOTE: HOSES Ⓒ AND Ⓓ ARE INCLUDED WITH THE ROOM EXTENSION MECHANISM.

- Ⓔ AP24638 HOSE ASSY HWH02HP x 90' CAP END - MUST MAINTAIN EQUAL LENGTH AND DIAMETER
- Ⓕ AP24643 HOSE ASSY HWH02HP x 126' ROD END - ALWAYS PRESSURIZED - MUST MAINTAIN EQUAL LENGTH AND DIAMETER



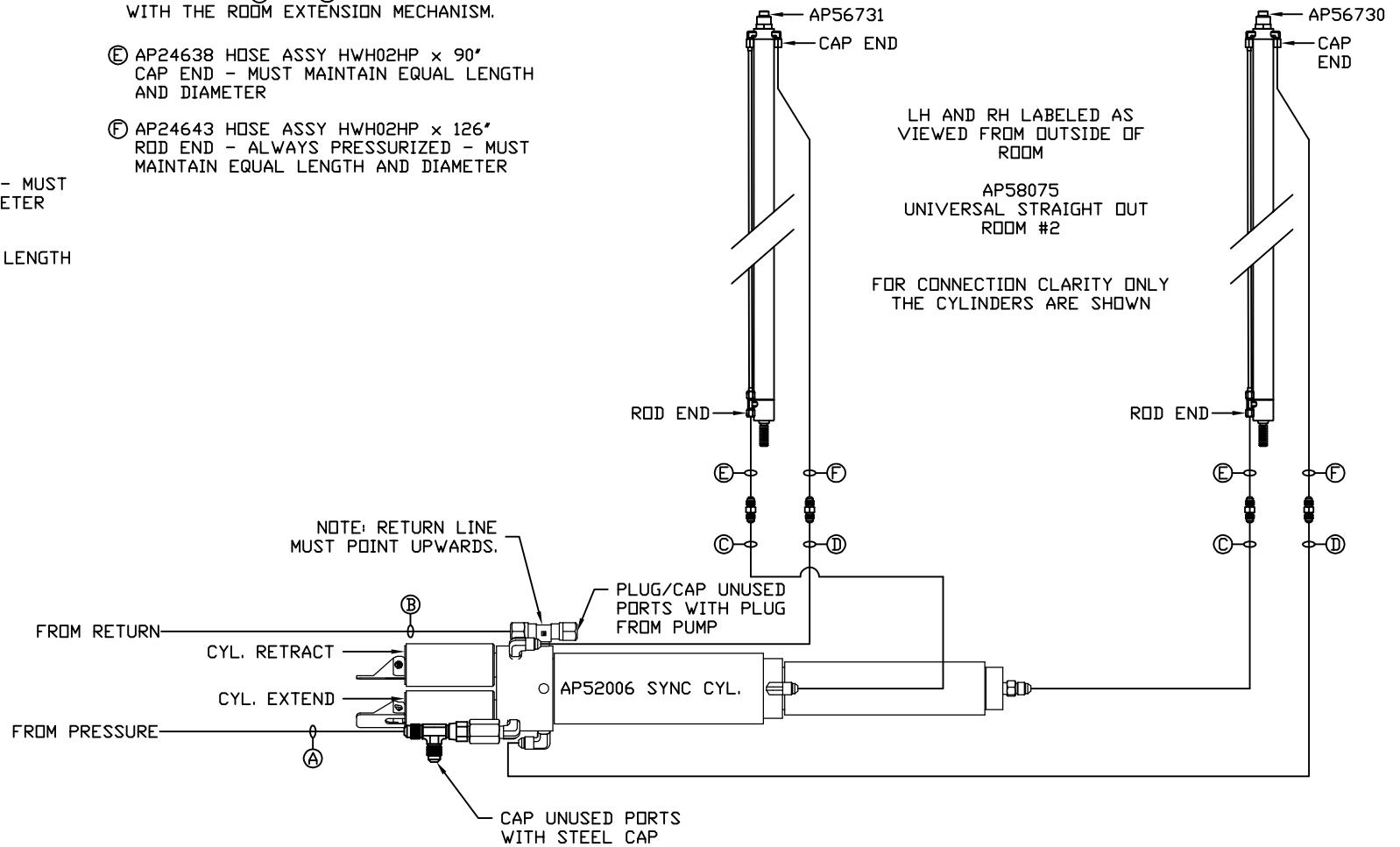
NOTE: INSTALLATION MUST CONFORM TO GOOD SHOP PRACTICES, SAE STANDARDS, RVIA STANDARDS, AND OTHER APPLICABLE STANDARDS.

MP71116 B/C
29SEP17

NOTE: HOSES ③ AND ④ ARE INCLUDED
WITH THE ROOM EXTENSION MECHANISM.

- ① AP5352 HOSE ASSY 04 x 96'
PRESSURE
- ② P29287 RETURN LINE 3/8 x 480'
RETURN
- ③ AP49244 HOSE ASSY 03 x 108'
ROD END - ALWAYS PRESSURIZED - MUST
MAINTAIN EQUAL LENGTH AND DIAMETER
- ④ AP4074 HOSE ASSY 04 x 108'
CAP END - MUST MAINTAIN EQUAL LENGTH
AND DIAMETER

- ⑤ AP24638 HOSE ASSY HWH02HP x 90'
CAP END - MUST MAINTAIN EQUAL LENGTH
AND DIAMETER
- ⑥ AP24643 HOSE ASSY HWH02HP x 126'
ROD END - ALWAYS PRESSURIZED - MUST
MAINTAIN EQUAL LENGTH AND DIAMETER



NOTE: INSTALLATION MUST CONFORM TO GOOD SHOP PRACTICES, SAE
STANDARDS, RVIA STANDARDS, AND OTHER APPLICABLE STANDARDS.

MP71116 C/C
29SEP17