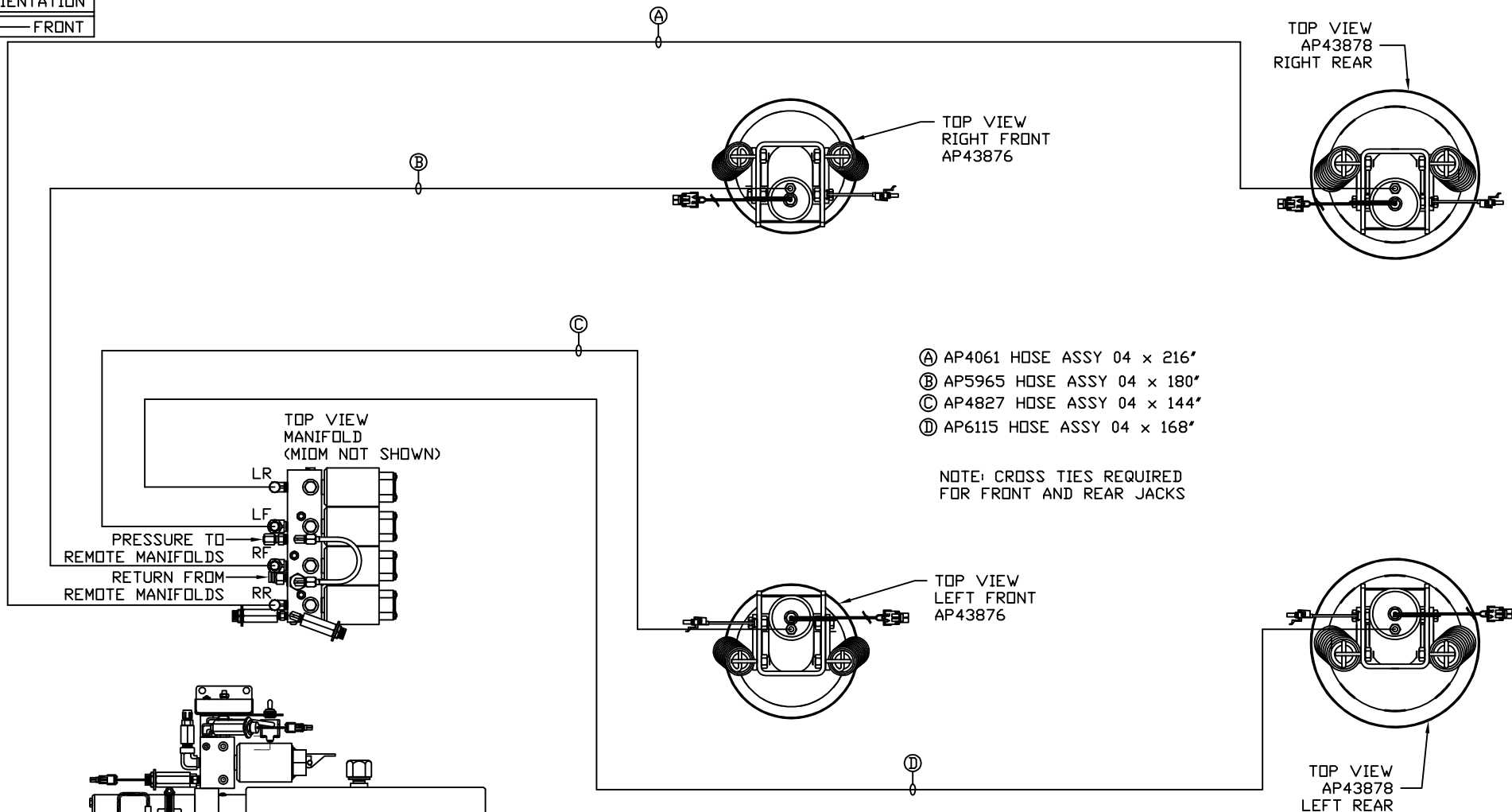


ORIENTATION
← FRONT



- Ⓐ AP4061 HOSE ASSY 04 x 216"
- Ⓑ AP5965 HOSE ASSY 04 x 180"
- Ⓒ AP4827 HOSE ASSY 04 x 144"
- Ⓓ AP6115 HOSE ASSY 04 x 168"

NOTE: CROSS TIES REQUIRED FOR FRONT AND REAR JACKS

SIDE VIEW PUMP/MANIFOLD-AP55132

LOCATION AND ORIENTATION OF PUMP/MANIFOLD ASSEMBLY WILL DIFFER DEPENDING UPON O.E.M.

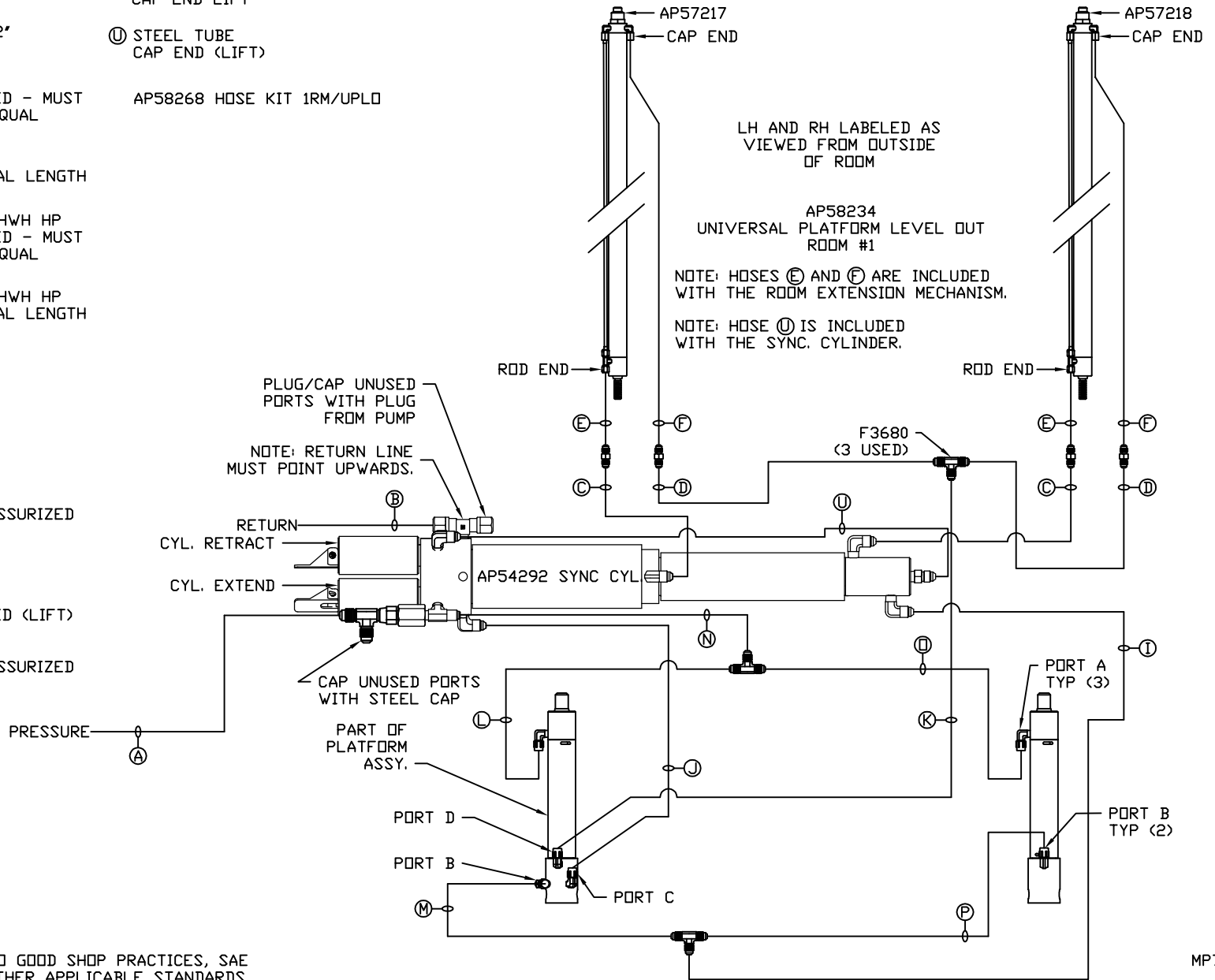
NOTE: INSTALLATION MUST CONFORM TO GOOD SHOP PRACTICES, SAE STANDARDS, RVIA STANDARDS, AND OTHER APPLICABLE STANDARDS.

LEVELING SYSTEM: AP58265

		HWH		I-80 EXIT 267 SOUTH RT 1 MOSCOW, IOWA 52760	
		SCALE 1:6	DATE 05JAN18	DRAWN BY .	
		HYD CONN DIAGRAM			
NO.	DATE	REVISION			
		PL CUSTOM		DRAWING NUMBER MP71132 A/B	
THE INFORMATION DISCLOSED ON THIS DRAWING IS CONFIDENTIAL AND MUST NOT BE DISCLOSED OR USED IN ANY MANNER WHICH WILL BE DETRIMENTAL TO THE HWH CORPORATION					

- Ⓐ AP4073 HOSE ASSY 04 × 60' PRESSURE
- Ⓑ P55310 TUBING NYLON 3/8 × 72' RETURN
- Ⓒ AP49245 HOSE ASSY 03 × 120' ROD END - ALWAYS PRESSURIZED - MUST BE HIGH PRESSURE HOSES OF EQUAL LENGTH AND DIAMETER
- Ⓓ AP4074 HOSE ASSY 04 × 108' CAP END - MUST MAINTAIN EQUAL LENGTH AND DIAMETER
- Ⓔ AP24632 HOSE ASSY 02 × 48' HWH HP ROD END - ALWAYS PRESSURIZED - MUST BE HIGH PRESSURE HOSES OF EQUAL LENGTH AND DIAMETER
- Ⓕ AP24636 HOSE ASSY 02 × 84' HWH HP CAP END - MUST MAINTAIN EQUAL LENGTH AND DIAMETER
- Ⓖ AP4060 HOSE ASSY 04 × 24' CAP END (LIFT)
- Ⓙ AP50766 HOSE ASSY 03 × 96' CAP END (ROOM)
- Ⓚ AP50909 HOSE ASSY 03 × 72' CAP END (ROOM)
- Ⓛ AP50909 HOSE ASSY 03 × 72' ROD END (LIFT) - ALWAYS PRESSURIZED
- Ⓜ AP50909 HOSE ASSY 03 × 72' CAP END (LIFT)
- Ⓝ AP3314 HOSE ASSY 04 × 48' ROD END - ALWAYS PRESSURIZED (LIFT)
- Ⓟ AP50909 HOSE ASSY 03 × 72' ROD END (LIFT) - ALWAYS PRESSURIZED

- Ⓠ AP50671 HOSE ASSY 03 × 84' CAP END LIFT
- Ⓡ STEEL TUBE CAP END (LIFT)
- AP58268 HOSE KIT 1RM/UPLD



NOTE: INSTALLATION MUST CONFORM TO GOOD SHOP PRACTICES, SAE STANDARDS, RVIA STANDARDS, AND OTHER APPLICABLE STANDARDS.

MP71132 B/B
05JAN18