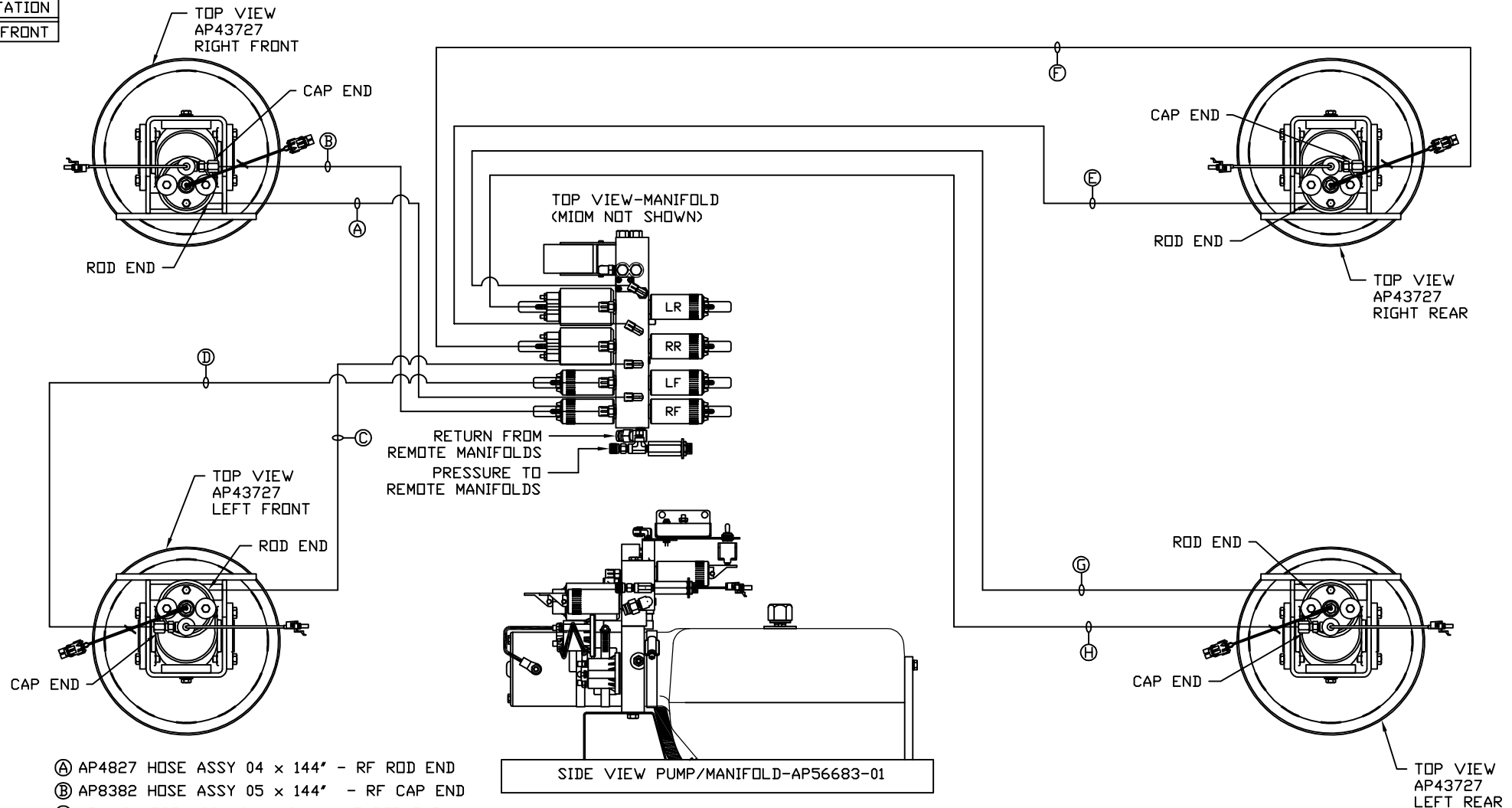


ORIENTATION
← FRONT



- Ⓐ AP4827 HOSE ASSY 04 x 144' - RF ROD END
- Ⓑ AP8382 HOSE ASSY 05 x 144' - RF CAP END
- Ⓒ AP1412 HOSE ASSY 04 x 84' - LF ROD END
- Ⓓ AP42051 HOSE ASSY 05 x 84' - LF CAP END
- Ⓔ AP5561 HOSE ASSY 04 x 336' - RR ROD END
- Ⓕ AP54015 HOSE ASSY 05 x 336' - RR CAP END
- Ⓖ AP2464 HOSE ASSY 04 x 324' - LR ROD END
- Ⓗ AP17476 HOSE ASSY 05 x 324' - LR CAP END

NOTE: INSTALLATION MUST CONFORM TO GOOD SHOP PRACTICES, SAE STANDARDS, RVIA STANDARDS, AND OTHER APPLICABLE STANDARDS.

SIDE VIEW PUMP/MANIFOLD-AP56683-01

LEVELING SYSTEM: AP58385

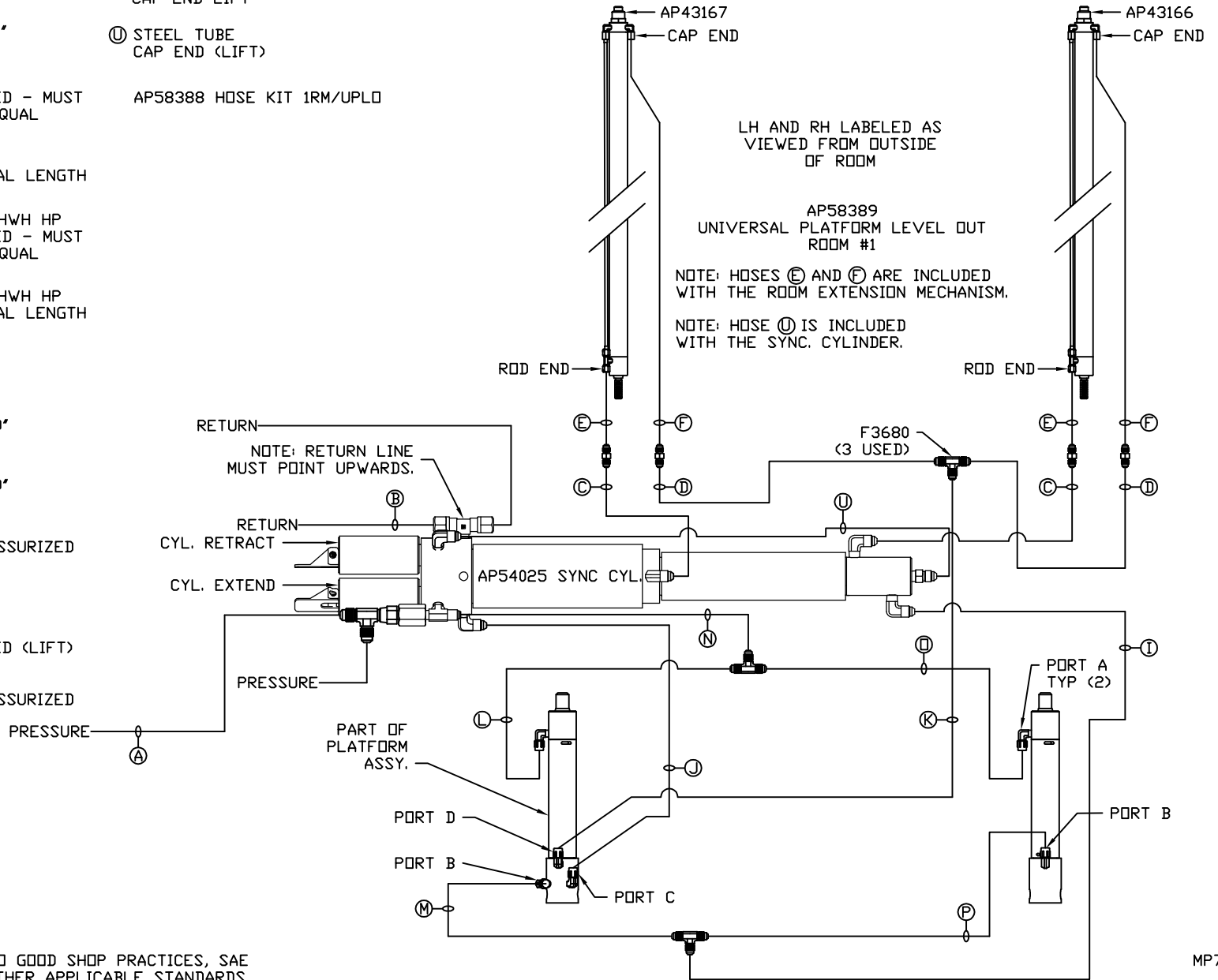
⚠	22FEB18	UPDATED HOSES
NO.	DATE	REVISION

THE INFORMATION DISCLOSED ON THIS DRAWING IS CONFIDENTIAL AND MUST NOT BE DISCLOSED OR USED IN ANY MANNER WHICH WILL BE DETRIMENTAL TO THE HWH CORPORATION

HWH			I-80 EXIT 267 SOUTH RT 1 MOSCOW, IOWA 52760		
SCALE 1:6	DATE 10JAN18	DRAWN BY .			
HYD CONN DIAGRAM					
FEATHERLITE				DRAWING NUMBER MP71134 A/C	

- Ⓐ AP5215 HOSE ASSY 04 x 78" PRESSURE
- Ⓑ P5145 TUBING NYLON 3/8 x 180" RETURN
- Ⓒ AP49244 HOSE ASSY 03 x 108" ROD END - ALWAYS PRESSURIZED - MUST BE HIGH PRESSURE HOSES OF EQUAL LENGTH AND DIAMETER
- Ⓓ AP4162 HOSE ASSY 04 x 192" CAP END - MUST MAINTAIN EQUAL LENGTH AND DIAMETER
- Ⓔ AP24632 HOSE ASSY 02 x 48" HWH HP ROD END - ALWAYS PRESSURIZED - MUST BE HIGH PRESSURE HOSES OF EQUAL LENGTH AND DIAMETER
- Ⓕ AP24636 HOSE ASSY 02 x 84" HWH HP CAP END - MUST MAINTAIN EQUAL LENGTH AND DIAMETER
- Ⓖ AP4075 HOSE ASSY 04 x 42" CAP END (LIFT)
- Ⓙ AP50909 HOSE ASSY 03 x 72" WAS AP49243 HOSE ASSY 03 x 60" CAP END (ROOM)
- Ⓚ AP50909 HOSE ASSY 03 x 72" WAS AP49243 HOSE ASSY 03 x 60" CAP END (ROOM)
- Ⓛ AP49243 HOSE ASSY 03 x 60" ROD END (LIFT) - ALWAYS PRESSURIZED
- Ⓜ AP52043 HOSE ASSY 03 x 18" CAP END (LIFT)
- Ⓝ AP2446 HOSE ASSY 04 x 18" ROD END - ALWAYS PRESSURIZED (LIFT)
- Ⓟ AP52163 HOSE ASSY 03 x 42" ROD END (LIFT) - ALWAYS PRESSURIZED

- Ⓟ AP50861 HOSE ASSY 03 x 102" CAP END LIFT
- Ⓢ STEEL TUBE CAP END (LIFT)
- AP58388 HOSE KIT 1RM/UPLD

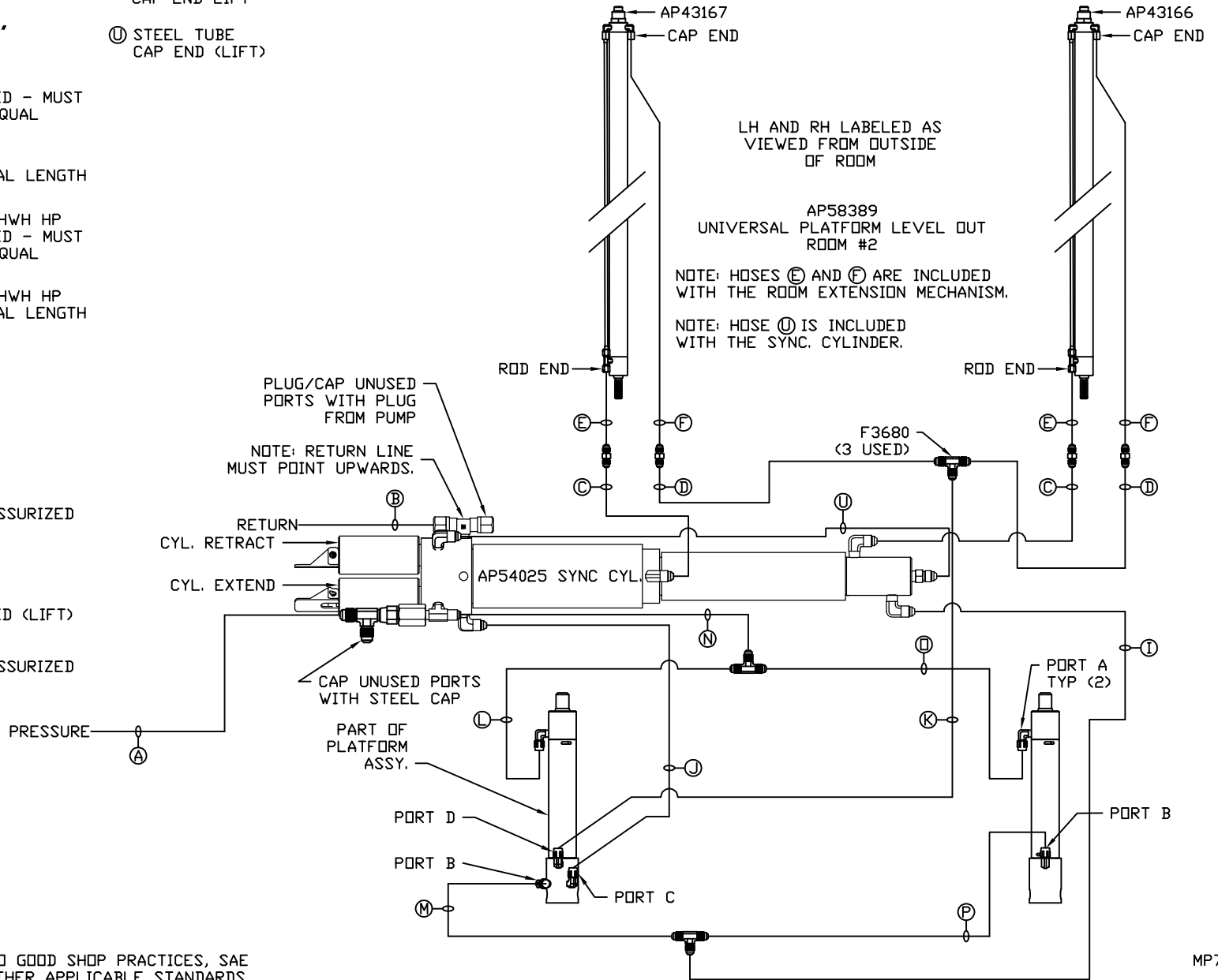


NOTE: INSTALLATION MUST CONFORM TO GOOD SHOP PRACTICES, SAE STANDARDS, RVIA STANDARDS, AND OTHER APPLICABLE STANDARDS.

MP71134 B/C
22FEB18

- (A) AP1412 HOSE ASSY 04 x 84" PRESSURE
- (B) P5145 TUBING NYLON 3/8 x 180" RETURN
- (C) AP50556 HOSE ASSY 03 x 114" ROD END - ALWAYS PRESSURIZED - MUST BE HIGH PRESSURE HOSES OF EQUAL LENGTH AND DIAMETER
- (D) AP53966 HOSE ASSY 04 x 174" CAP END - MUST MAINTAIN EQUAL LENGTH AND DIAMETER
- (E) AP24632 HOSE ASSY 02 x 48" HWH HP ROD END - ALWAYS PRESSURIZED - MUST BE HIGH PRESSURE HOSES OF EQUAL LENGTH AND DIAMETER
- (F) AP24636 HOSE ASSY 02 x 84" HWH HP CAP END - MUST MAINTAIN EQUAL LENGTH AND DIAMETER
- (I) AP4059 HOSE ASSY 04 x 36" CAP END (LIFT)
- (J) AP49243 HOSE ASSY 03 x 60" CAP END (ROOM)
- (K) AP49243 HOSE ASSY 03 x 60" CAP END (ROOM)
- (L) AP50908 HOSE ASSY 03 x 54" ROD END (LIFT) - ALWAYS PRESSURIZED
- (M) AP16434 HOSE ASSY 03 x 24" CAP END (LIFT)
- (N) AP2446 HOSE ASSY 04 x 18" ROD END - ALWAYS PRESSURIZED (LIFT)
- (O) AP50908 HOSE ASSY 03 x 54" ROD END (LIFT) - ALWAYS PRESSURIZED

- (P) AP50556 HOSE ASSY 03 x 114" CAP END LIFT
- (U) STEEL TUBE CAP END (LIFT)



NOTE: INSTALLATION MUST CONFORM TO GOOD SHOP PRACTICES, SAE STANDARDS, RVIA STANDARDS, AND OTHER APPLICABLE STANDARDS.

MP71134 C/C
10JAN18