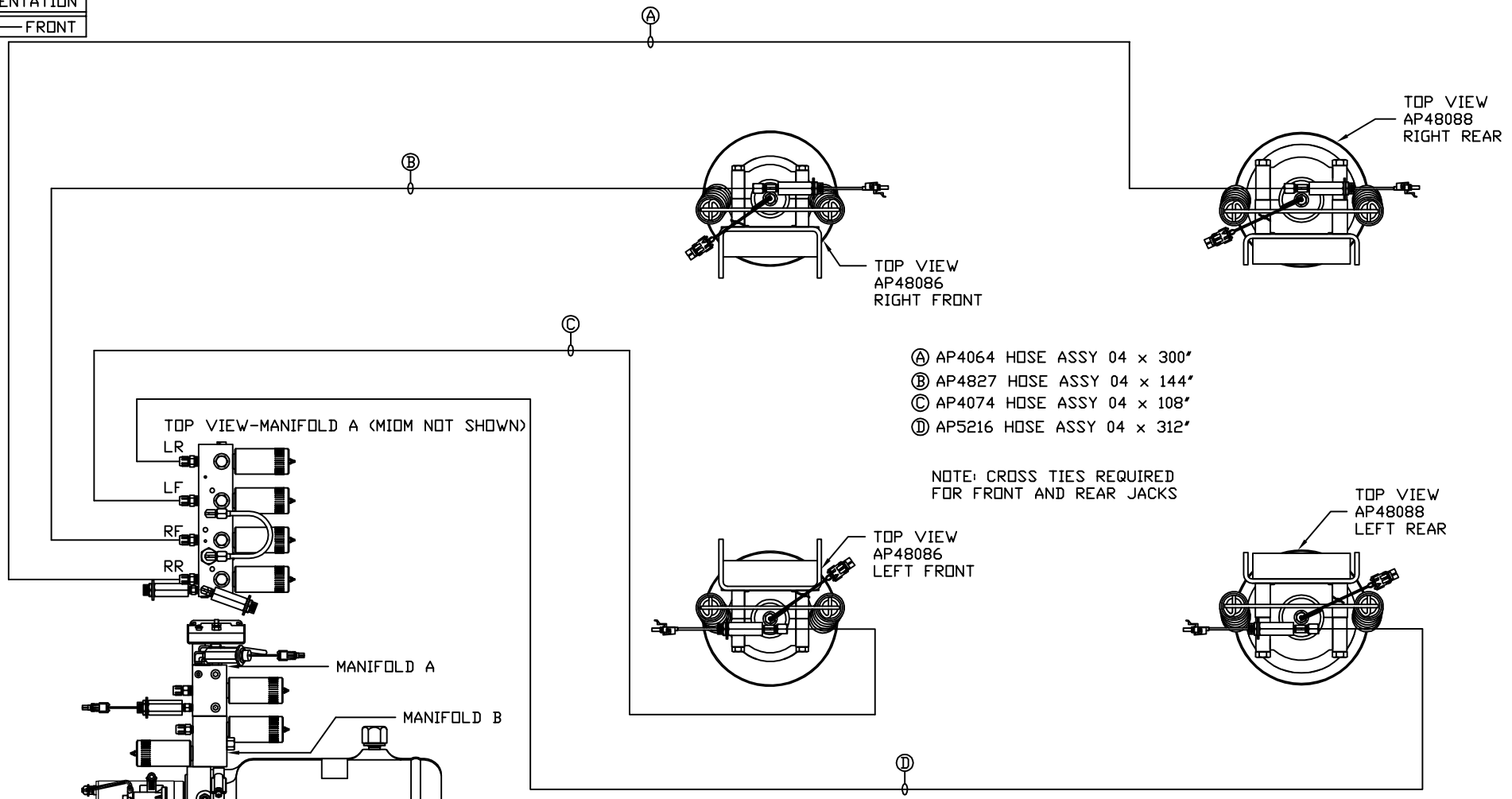
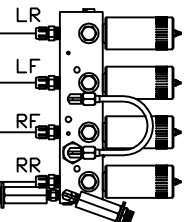


ORIENTATION  
← FRONT

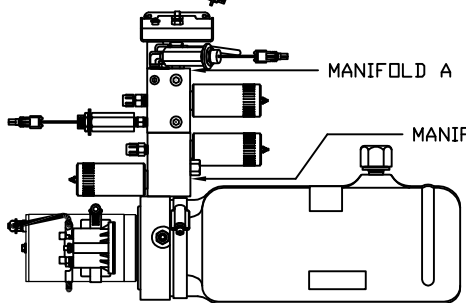


TOP VIEW-MANIFOLD A (MIDM NOT SHOWN)



MANIFOLD A

MANIFOLD B



SIDE VIEW PUMP/MANIFOLD-AP58582

LOCATION AND ORIENTATION OF PUMP/MANIFOLD ASSEMBLY WILL DIFFER DEPENDING UPON O.E.M.

- Ⓐ AP4064 HOSE ASSY 04 x 300"
- Ⓑ AP4827 HOSE ASSY 04 x 144"
- Ⓒ AP4074 HOSE ASSY 04 x 108"
- Ⓓ AP5216 HOSE ASSY 04 x 312"

NOTE: CROSS TIES REQUIRED FOR FRONT AND REAR JACKS

NO.	DATE	REVISION
1		
2		
3		
4		
5		
6		
7		
8		
9		
10		

<b>HWH</b>			I-80 EXIT 267 SOUTH RT 1 MOSCOW, IOWA 52760		
SCALE 1:6	DATE 14FEB18	DRAWN BY .			
<b>HYD CONN DIAGRAM</b>					
<b>TIFFIN</b>				DRAWING NUMBER MP71164 A/B	

NOTE: INSTALLATION MUST CONFORM TO GOOD SHOP PRACTICES, SAE STANDARDS, RVIA STANDARDS, AND OTHER APPLICABLE STANDARDS.

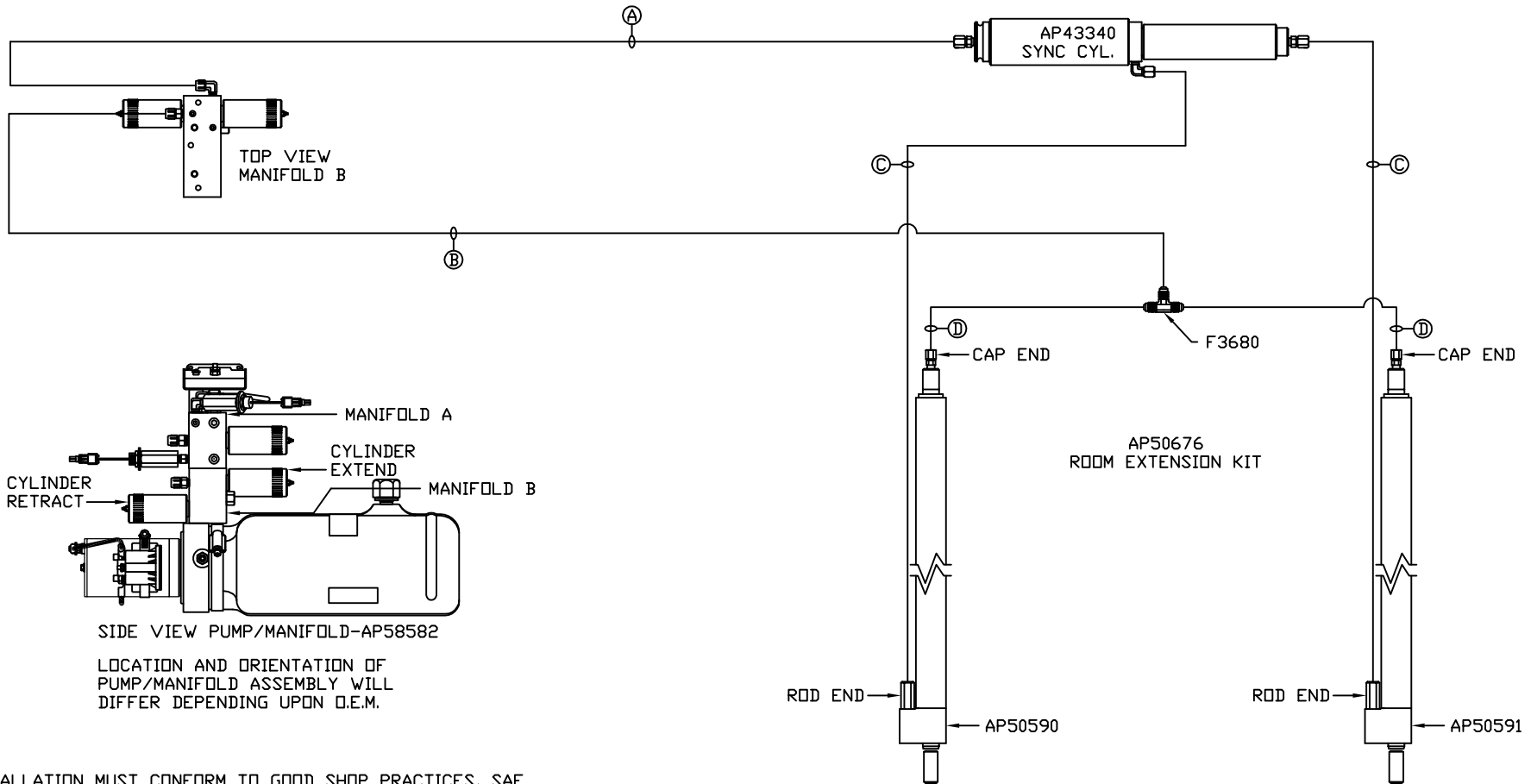
SYNC KIT: AP53871  
PUMP KIT: AP58590  
JACK KIT: AP58588

THE INFORMATION DISCLOSED ON THIS DRAWING IS CONFIDENTIAL AND MUST NOT BE DISCLOSED OR USED IN ANY MANNER WHICH WILL BE DETRIMENTAL TO THE HWH CORPORATION

ORIENTATION

← FRONT

- Ⓐ AP4159 HOSE ASSY 04 x 72"  
ROD END - ALWAYS PRESSURIZED
- Ⓑ AP5352 HOSE ASSY 04 x 96"  
CAP END
- Ⓒ AP49517 HOSE ASSY 03 x 180"  
ROD END - ALWAYS PRESSURIZED  
HOSES MUST MAINTAIN EQUAL  
LENGTH AND DIAMETER
- Ⓓ AP10913 HOSE ASSY 04 x 162"  
CAP END - HOSES MUST MAINTAIN  
EQUAL LENGTH AND DIAMETER



SIDE VIEW PUMP/MANIFOLD-AP58582

LOCATION AND ORIENTATION OF  
PUMP/MANIFOLD ASSEMBLY WILL  
DIFFER DEPENDING UPON O.E.M.

NOTE: INSTALLATION MUST CONFORM TO GOOD SHOP PRACTICES, SAE  
STANDARDS, RVIA STANDARDS, AND OTHER APPLICABLE STANDARDS.