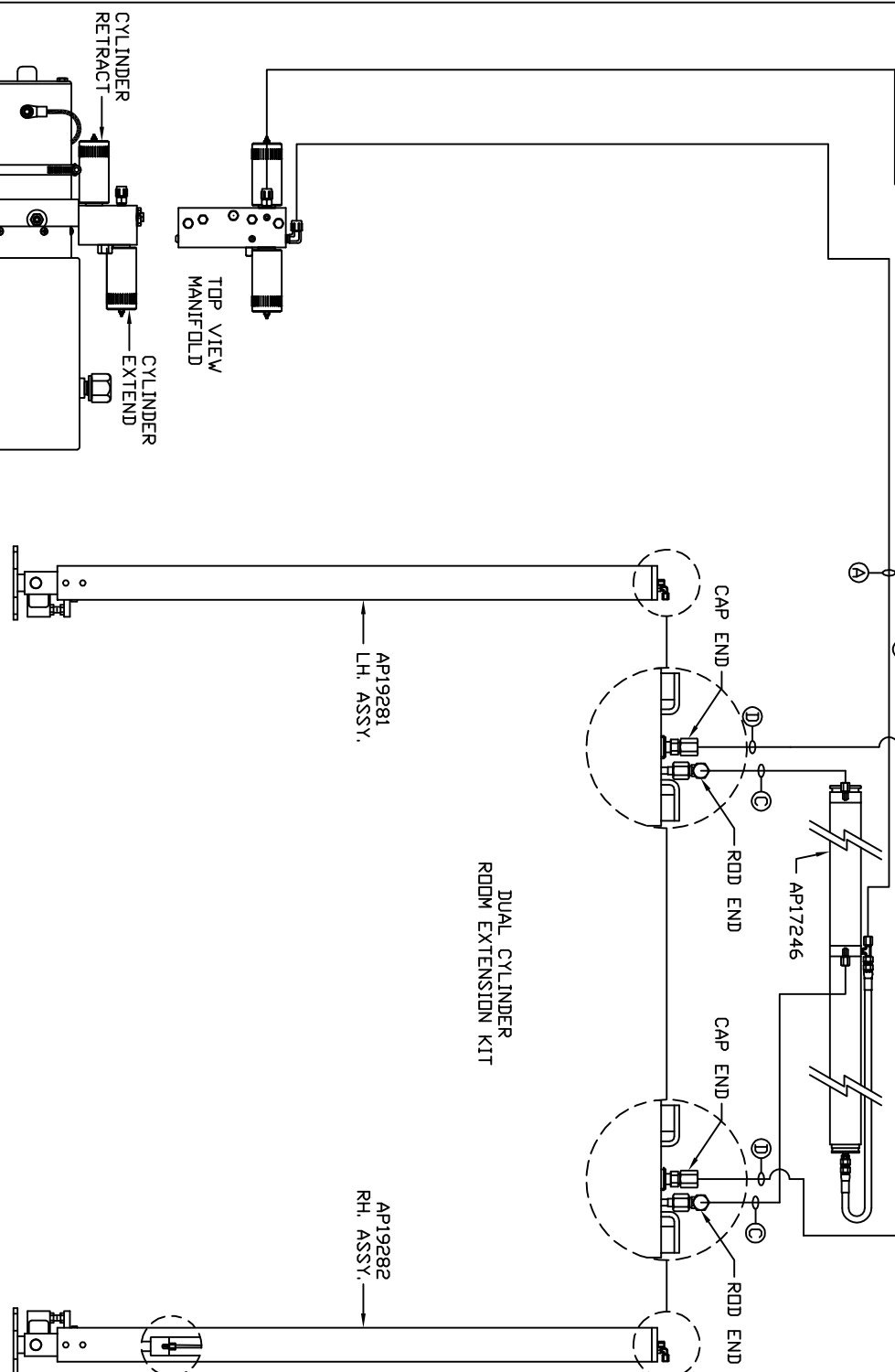


ORIENTATION
FRONT



- Ⓐ 04 HOSE
ROD END - ALWAYS PRESSURIZED
- Ⓑ 04 HOSE
CAP END
- Ⓒ 03 HOSE
ROD END - ALWAYS PRESSURIZED
HOSES MUST BE HIGH PRESSURE
HOSES OF EQUAL LENGTH AND DIAMETER
- Ⓓ 04 HOSE
CAP END - HOSES MUST MAINTAIN
EQUAL LENGTH AND DIAMETER

SIDE VIEW PUMP/MANIFOLD-AP31728
LOCATION AND ORIENTATION OF
PUMP/MANIFOLD ASSEMBLY WILL
DIFFER DEPENDING UPON O.E.M.

NOTE: INSTALLATION MUST CONFORM TO GOOD SHOP PRACTICES, SAE
STANDARDS, RVIA STANDARDS, AND OTHER APPLICABLE STANDARDS.

CONTROL PACKAGE: AP56589

NO.	DATE	REVISION

HWH 1-80 EXIT 267 SOUTH
 RT 1 MOSCOW, IDWA 52760
 SCALE 1:6 DATE 29MAY18 DRAWN BY .
 HYD CONN DIAGRAM
 TURN KEY DRAWING NUMBER
 MP71181

THE INFORMATION DISCLOSED ON THIS DRAWING IS CON-
FIDENTIAL AND MUST NOT BE DISCLOSED OR USED IN ANY
MANNER WHICH WILL BE DETRIMENTAL TO THE HWH CORPORATION