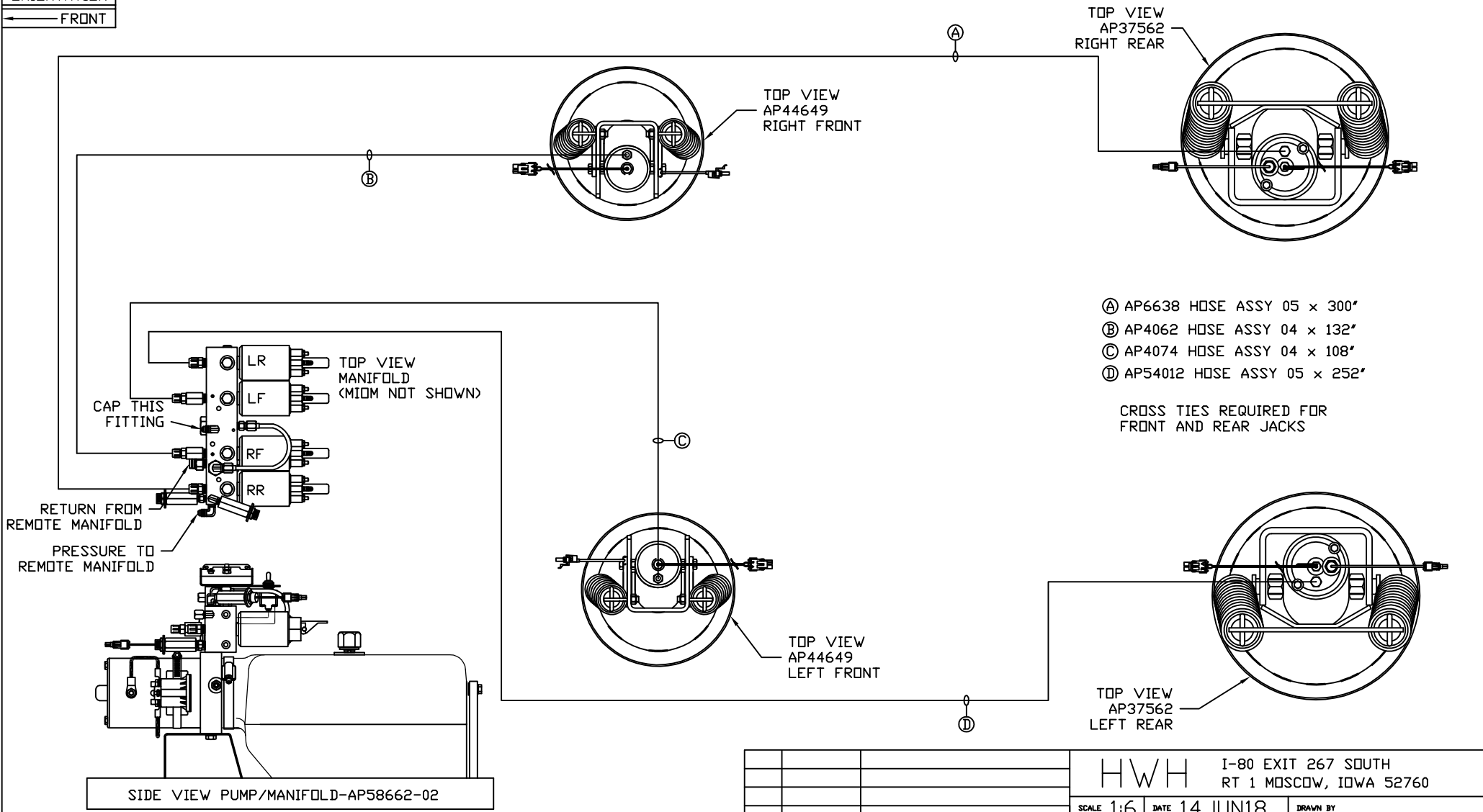


ORIENTATION
← FRONT



- Ⓐ AP6638 HOSE ASSY 05 x 300'
- Ⓑ AP4062 HOSE ASSY 04 x 132'
- Ⓒ AP4074 HOSE ASSY 04 x 108'
- Ⓓ AP54012 HOSE ASSY 05 x 252'

CROSS TIES REQUIRED FOR FRONT AND REAR JACKS

SIDE VIEW PUMP/MANIFOLD-AP58662-02

LOCATION AND ORIENTATION OF PUMP/MANIFOLD ASSEMBLY WILL DIFFER DEPENDING UPON O.E.M.

NOTE: INSTALLATION MUST CONFORM TO GOOD SHOP PRACTICES, SAE STANDARDS, RVIA STANDARDS, AND OTHER APPLICABLE STANDARDS.

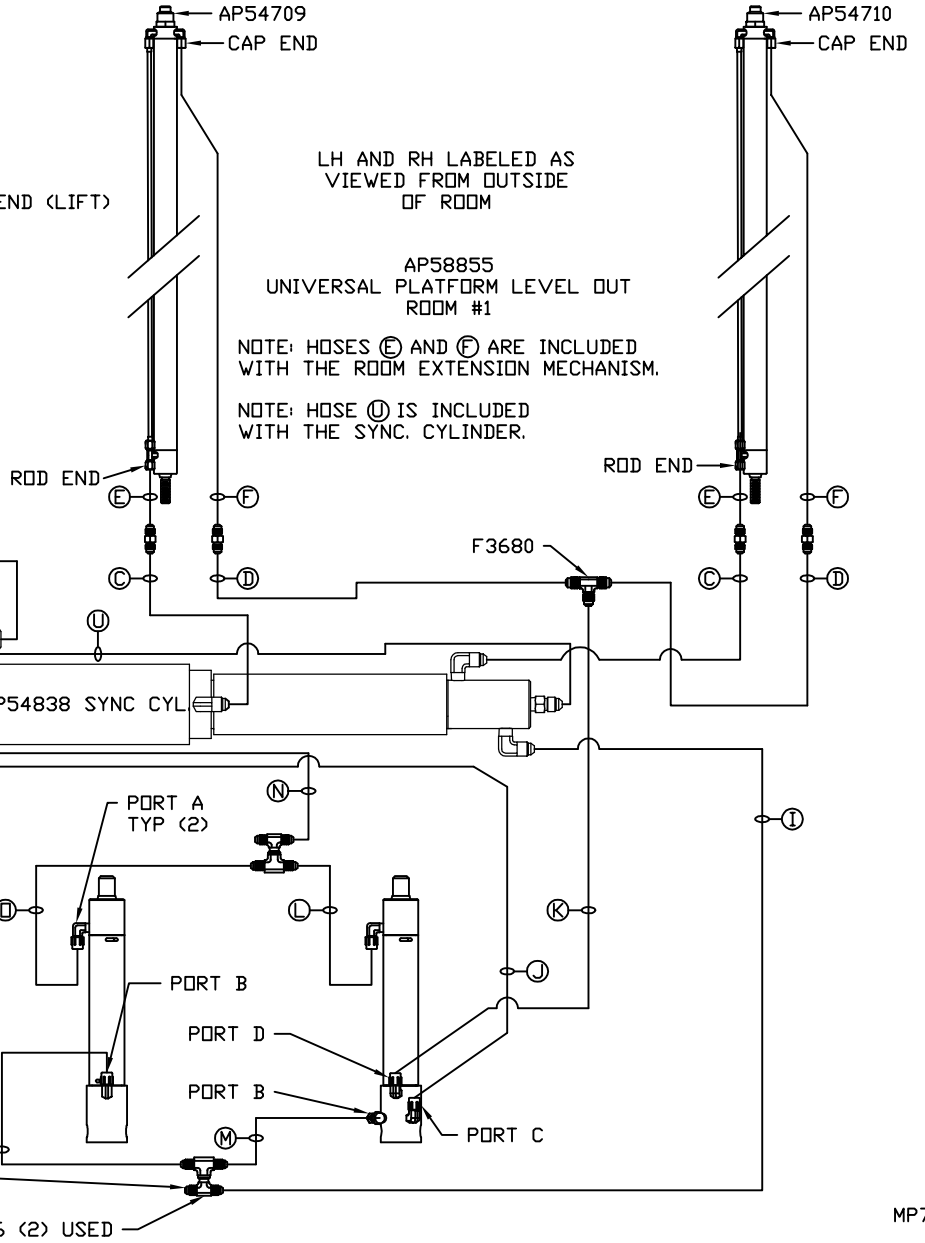
LEVELING SYSTEM: AP58900

		HWH		I-80 EXIT 267 SOUTH RT 1 MOSCOW, IOWA 52760	
		SCALE 1:6	DATE 14JUN18	DRAWN BY .	
		HYD CONN DIAGRAM			
NO.	DATE	REVISION			
		THE INFORMATION DISCLOSED ON THIS DRAWING IS CONFIDENTIAL AND MUST NOT BE DISCLOSED OR USED IN ANY MANNER WHICH WILL BE DETRIMENTAL TO THE HWH CORPORATION			
		MATTHEWS		DRAWING NUMBER MP71182 A/C	

- Ⓐ AP5352 HOSE ASSY 04 x 96" PRESSURE
- Ⓑ P53886 3/8" OD NYLON TUBING RETURN
- Ⓒ AP49245 HOSE ASSY 03 x 120" ROD END - ALWAYS PRESSURIZED - MUST MAINTAIN EQUAL LENGTH AND DIAMETER
- Ⓓ AP4161 HOSE ASSY 04 x 120" CAP END - MUST MAINTAIN EQUAL LENGTH AND DIAMETER
- Ⓔ AP24632 HOSE ASSY HWH02HP x 48" ROD END - ALWAYS PRESSURIZED - MUST MAINTAIN EQUAL LENGTH AND DIAMETER
- Ⓕ AP24636 HOSE ASSY HWH02HP x 84" CAP END - MUST MAINTAIN EQUAL LENGTH AND DIAMETER
- Ⓖ AP4161 HOSE ASSY 04 x 120" CAP END (LIFT)
- Ⓙ AP4161 HOSE ASSY 04 x 120" CAP END (ROOM)
- Ⓚ AP49245 HOSE ASSY 03 x 120" CAP END (ROOM)

- Ⓛ AP49245 HOSE ASSY 03 x 120" - ROD END (LIFT) ALWAYS PRESSURIZED
- Ⓜ AP4059 HOSE ASSY 04 x 36" CAP END (LIFT)
- Ⓝ AP49245 HOSE ASSY 03 x 120" ROD END - ALWAYS PRESSURIZED (LIFT)
- Ⓟ AP49245 HOSE ASSY 03 x 120" - ROD END (LIFT) ALWAYS PRESSURIZED
- Ⓠ AP4059 HOSE ASSY 04 x 36" CAP END LIFT

AP58880 HOSE KIT 2RM/UPLD/USD



LH AND RH LABELED AS VIEWED FROM OUTSIDE OF ROOM

AP58855 UNIVERSAL PLATFORM LEVEL OUT ROOM #1

NOTE: HOSES Ⓔ AND Ⓕ ARE INCLUDED WITH THE ROOM EXTENSION MECHANISM.

NOTE: HOSE Ⓛ IS INCLUDED WITH THE SYNC. CYLINDER.

NOTE: RETURN LINE MUST POINT UPWARDS.

CAP UNUSED PORTS WITH STEEL CAP (2 PLACES)

AP31956 (2) USED

NOTE: INSTALLATION MUST CONFORM TO GOOD SHOP PRACTICES, SAE STANDARDS, RVIA STANDARDS, AND OTHER APPLICABLE STANDARDS.

MP71182 B/C
14JUN18

