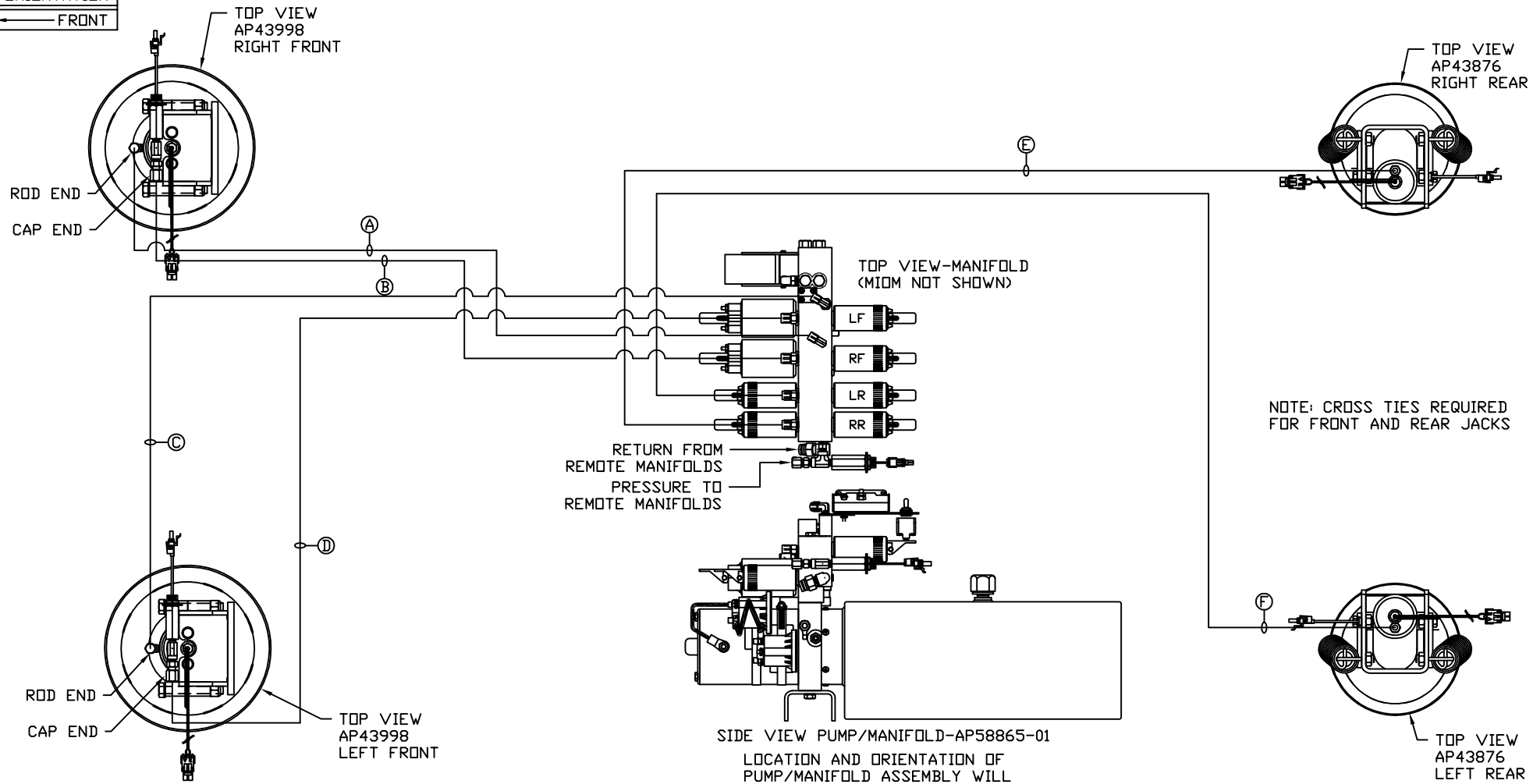


ORIENTATION  
← FRONT



- Ⓐ AP4310 HOSE ASSY 04 X 204' - RF ROD END
- Ⓑ AP22078 HOSE ASSY 05 X 204' - RF CAP END
- Ⓒ AP4063 HOSE ASSY 04 X 288' - LF ROD END
- Ⓓ AP54013 HOSE ASSY 05 X 288' - RF CAP END
- Ⓔ AP4065 HOSE ASSY 04 X 156' - RR CAP END
- Ⓕ AP5562 HOSE ASSY 04 X 276' - LR CAP END

SIDE VIEW PUMP/MANIFOLD-AP58865-01  
LOCATION AND ORIENTATION OF PUMP/MANIFOLD ASSEMBLY WILL DIFFER DEPENDING UPON O.E.M.

NOTE: INSTALLATION MUST CONFORM TO GOOD SHOP PRACTICES, SAE STANDARDS, RVIA STANDARDS, AND OTHER APPLICABLE STANDARDS.

LEVELING SYSTEM: AP58966

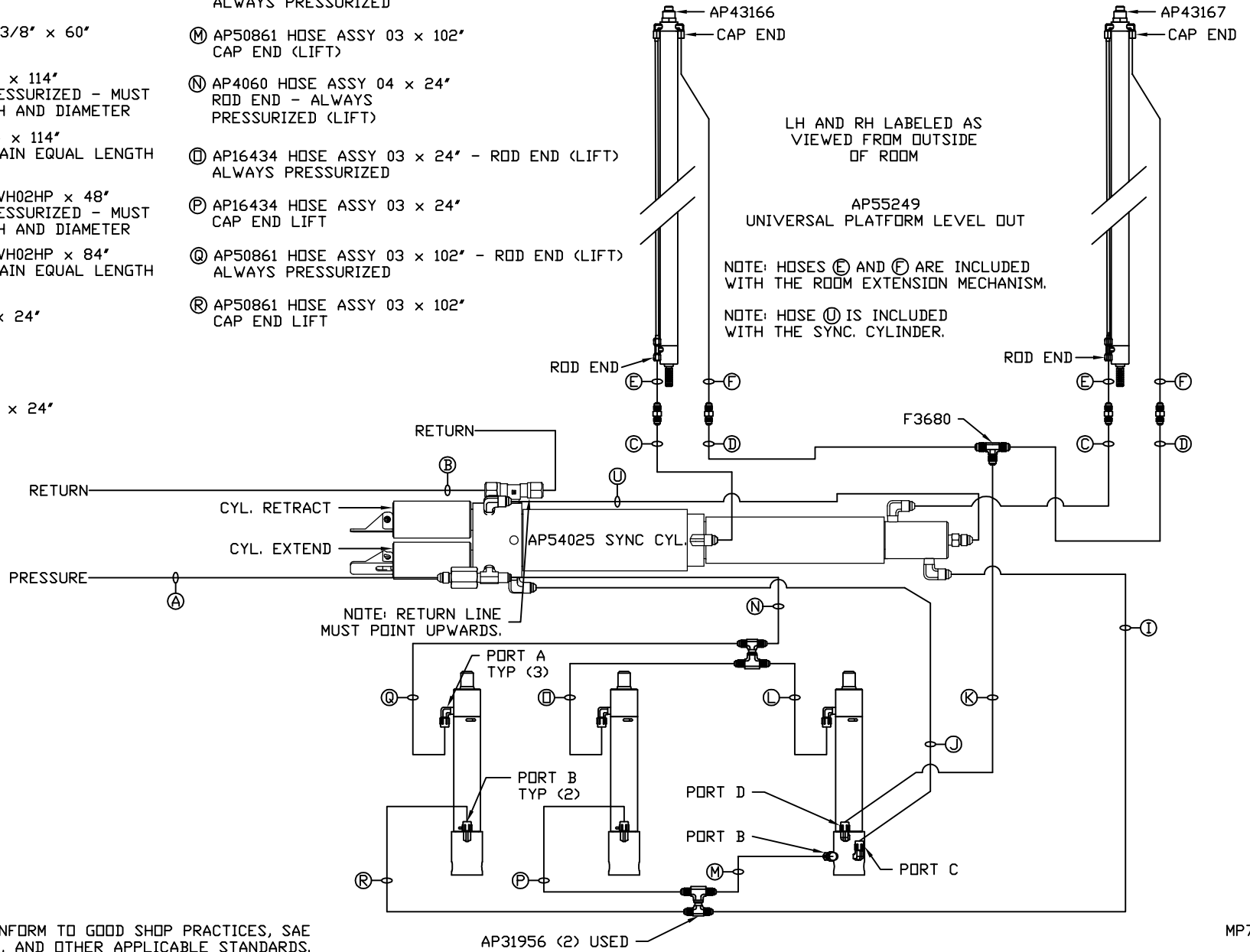
NO.	DATE	REVISION

<p><b>HWH</b> I-80 EXIT 267 SOUTH RT 1 MOSCOW, IOWA 52760</p>		
SCALE 1:6	DATE 18DEC18	DRAWN BY .
<p><b>HYD CONN DIAGRAM</b></p>		
<p><b>ROLLINGSTAR</b></p>		<p>DRAWING NUMBER MP71200 A/B</p>

THE INFORMATION DISCLOSED ON THIS DRAWING IS CONFIDENTIAL AND MUST NOT BE DISCLOSED OR USED IN ANY MANNER WHICH WILL BE DETRIMENTAL TO THE HWH CORPORATION

- (A) AP3314 HOSE ASSY 04 x 48" PRESSURE
- (B) P53884 TUBING NYLON 3/8" x 60" RETURN
- (C) AP50556 HOSE ASSY 03 x 114" ROD END - ALWAYS PRESSURIZED - MUST MAINTAIN EQUAL LENGTH AND DIAMETER
- (D) AP53964 HOSE ASSY 04 x 114" CAP END - MUST MAINTAIN EQUAL LENGTH AND DIAMETER
- (E) AP24632 HOSE ASSY HWH02HP x 48" ROD END - ALWAYS PRESSURIZED - MUST MAINTAIN EQUAL LENGTH AND DIAMETER
- (F) AP24636 HOSE ASSY HWH02HP x 84" CAP END - MUST MAINTAIN EQUAL LENGTH AND DIAMETER
- (I) AP4060 HOSE ASSY 04 x 24" CAP END (LIFT)
- (J) HOSE ASSY 04 CAP END (ROOM)
- (K) AP16434 HOSE ASSY 03 x 24" CAP END (ROOM)

- (L) AP50861 HOSE ASSY 03 x 102" - ROD END (LIFT) ALWAYS PRESSURIZED
- (M) AP50861 HOSE ASSY 03 x 102" CAP END (LIFT)
- (N) AP4060 HOSE ASSY 04 x 24" ROD END - ALWAYS PRESSURIZED (LIFT)
- (O) AP16434 HOSE ASSY 03 x 24" - ROD END (LIFT) ALWAYS PRESSURIZED
- (P) AP16434 HOSE ASSY 03 x 24" CAP END LIFT
- (Q) AP50861 HOSE ASSY 03 x 102" - ROD END (LIFT) ALWAYS PRESSURIZED
- (R) AP50861 HOSE ASSY 03 x 102" CAP END LIFT



NOTE: INSTALLATION MUST CONFORM TO GOOD SHOP PRACTICES, SAE STANDARDS, RVIA STANDARDS, AND OTHER APPLICABLE STANDARDS.

MP71200 B/B  
18DEC18