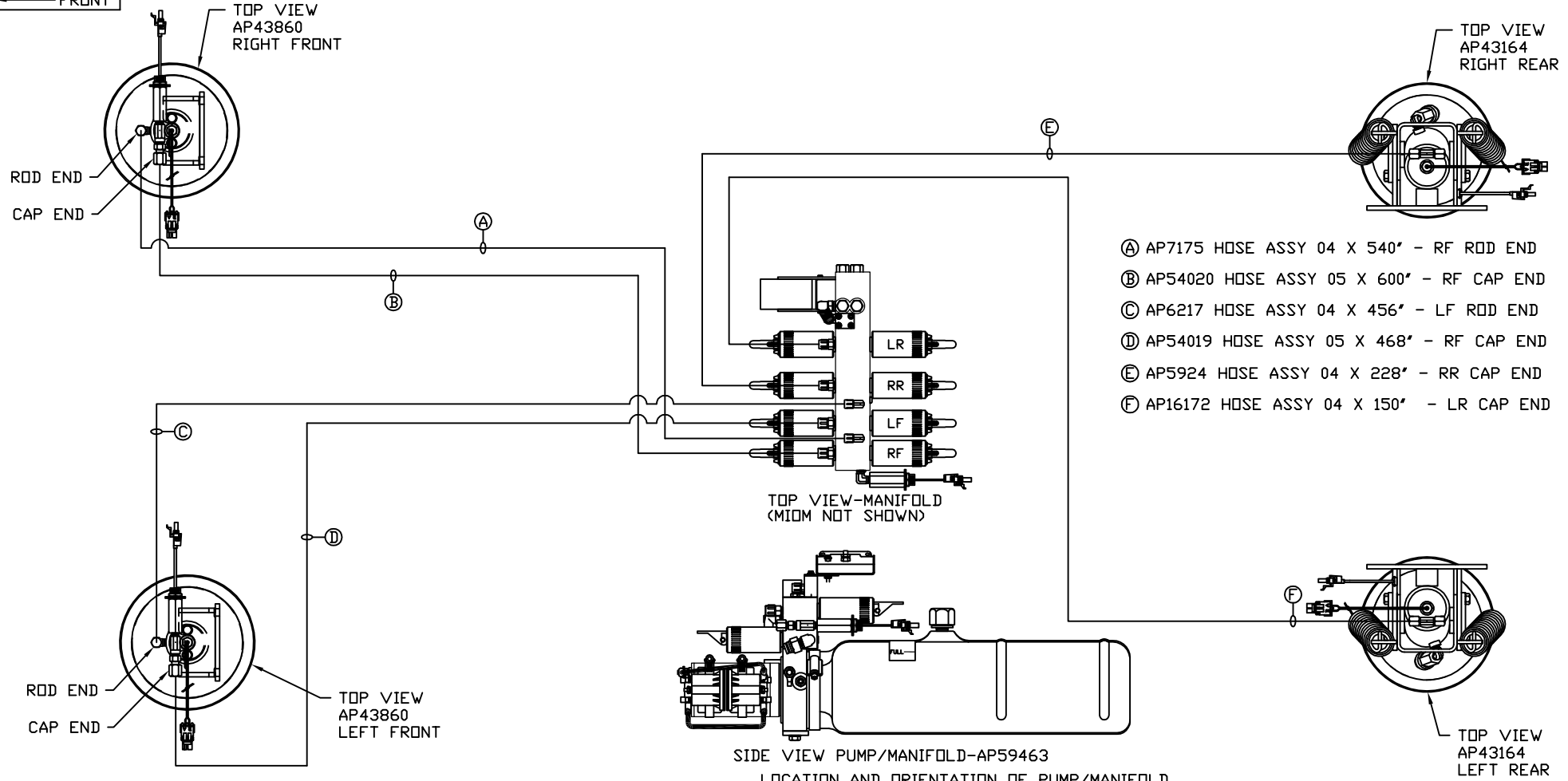


ORIENTATION
← FRONT



- Ⓐ AP7175 HOSE ASSY 04 X 540" - RF ROD END
- Ⓑ AP54020 HOSE ASSY 05 X 600" - RF CAP END
- Ⓒ AP6217 HOSE ASSY 04 X 456" - LF ROD END
- Ⓓ AP54019 HOSE ASSY 05 X 468" - RF CAP END
- Ⓔ AP5924 HOSE ASSY 04 X 228" - RR CAP END
- Ⓕ AP16172 HOSE ASSY 04 X 150" - LR CAP END

LOCATION AND ORIENTATION OF PUMP/MANIFOLD ASSEMBLY WILL DIFFER DEPENDING UPON D.E.M.

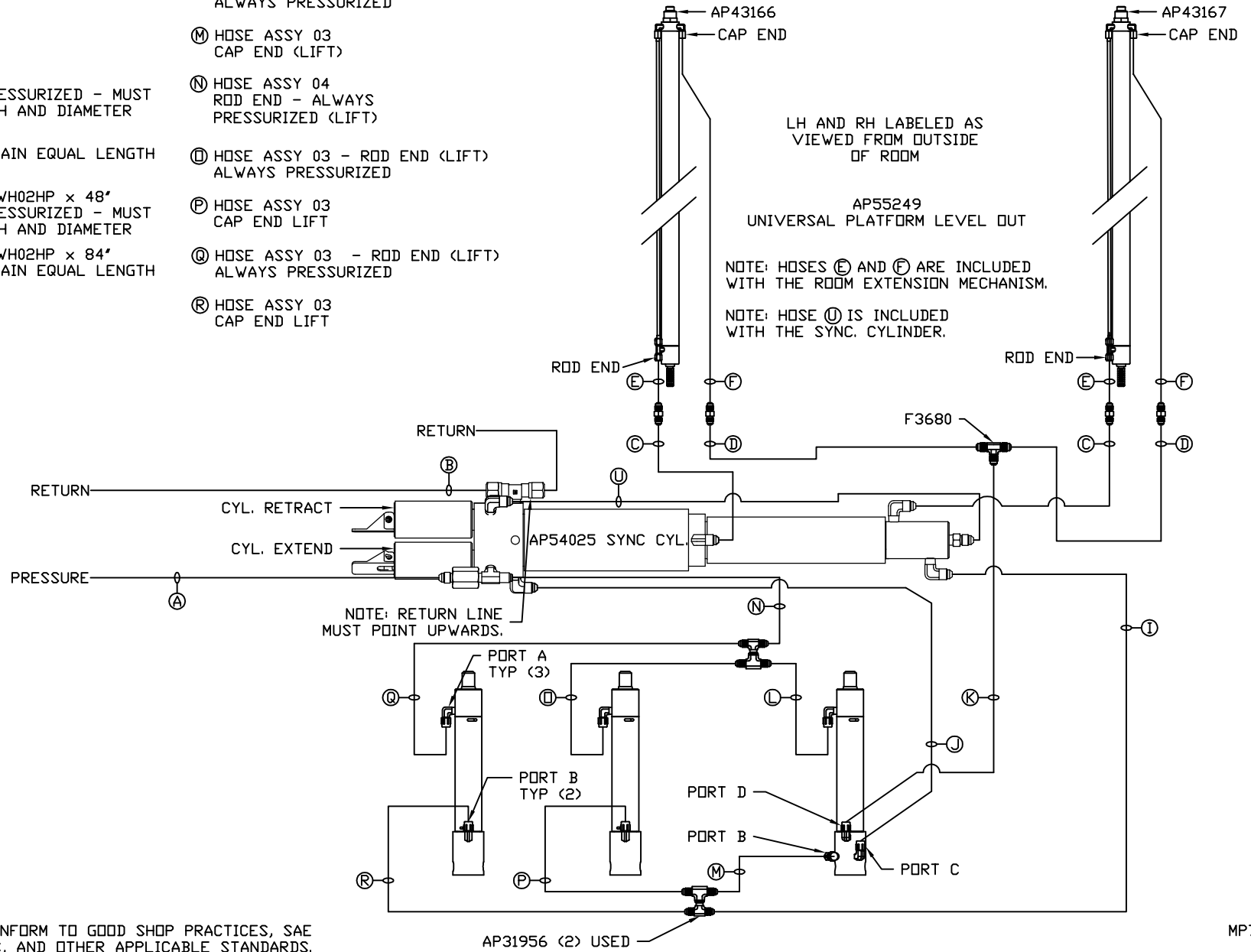
NOTE: INSTALLATION MUST CONFORM TO GOOD SHOP PRACTICES, SAE STANDARDS, RVIA STANDARDS, AND OTHER APPLICABLE STANDARDS.

LEVELING SYSTEM: AP59459

		HWH		I-80 EXIT 267 SOUTH RT 1 MOSCOW, IOWA 52760	
		SCALE 1:6	DATE 18DEC18	DRAWN BY .	
		HYD CONN DIAGRAM			
NO.	DATE	REVISION			
		ROLLINGSTAR		DRAWING NUMBER MP71201 A/B	
<p>THE INFORMATION DISCLOSED ON THIS DRAWING IS CONFIDENTIAL AND MUST NOT BE DISCLOSED OR USED IN ANY MANNER WHICH WILL BE DETRIMENTAL TO THE HWH CORPORATION</p>					

- (A) HOSE ASSY 04
PRESSURE
- (B) TUBING NYLON 3/8"
RETURN
- (C) HOSE ASSY 03
ROD END - ALWAYS PRESSURIZED - MUST
MAINTAIN EQUAL LENGTH AND DIAMETER
- (D) HOSE ASSY 04
CAP END - MUST MAINTAIN EQUAL LENGTH
AND DIAMETER
- (E) AP24632 HOSE ASSY HWH02HP x 48"
ROD END - ALWAYS PRESSURIZED - MUST
MAINTAIN EQUAL LENGTH AND DIAMETER
- (F) AP24636 HOSE ASSY HWH02HP x 84"
CAP END - MUST MAINTAIN EQUAL LENGTH
AND DIAMETER
- (I) HOSE ASSY 04
CAP END (LIFT)
- (J) HOSE ASSY 04
CAP END (ROOM)
- (K) HOSE ASSY 03
CAP END (ROOM)

- (L) HOSE ASSY 03 - ROD END (LIFT)
ALWAYS PRESSURIZED
- (M) HOSE ASSY 03
CAP END (LIFT)
- (N) HOSE ASSY 04
ROD END - ALWAYS
PRESSURIZED (LIFT)
- (O) HOSE ASSY 03 - ROD END (LIFT)
ALWAYS PRESSURIZED
- (P) HOSE ASSY 03
CAP END LIFT
- (Q) HOSE ASSY 03 - ROD END (LIFT)
ALWAYS PRESSURIZED
- (R) HOSE ASSY 03
CAP END LIFT



NOTE: INSTALLATION MUST CONFORM TO GOOD SHOP PRACTICES, SAE STANDARDS, RVIA STANDARDS, AND OTHER APPLICABLE STANDARDS.

MP71201 B/B
18DEC18