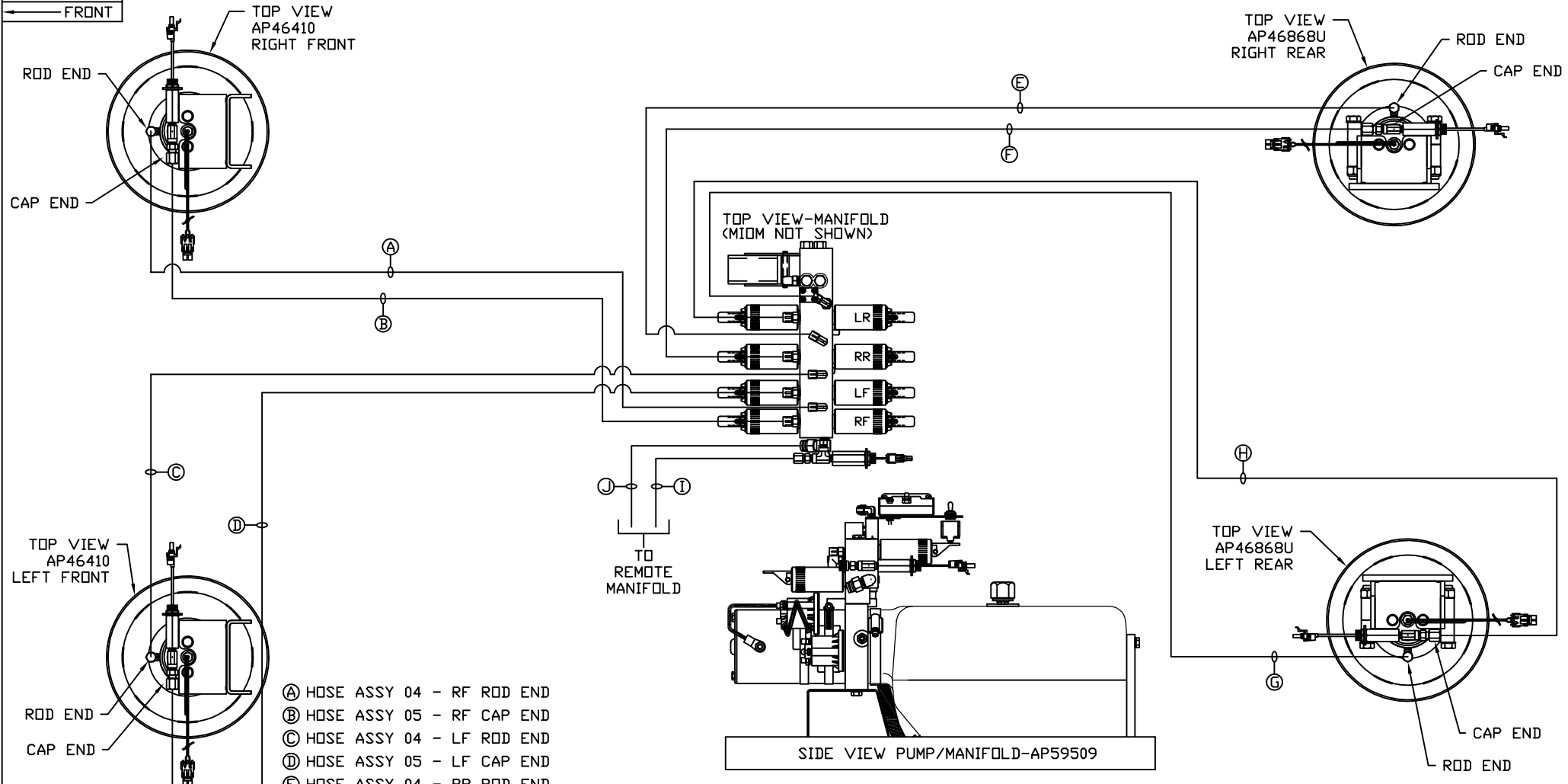


ORIENTATION
← FRONT



- Ⓐ HOSE ASSY 04 - RF ROD END
- Ⓑ HOSE ASSY 05 - RF CAP END
- Ⓒ HOSE ASSY 04 - LF ROD END
- Ⓓ HOSE ASSY 05 - LF CAP END
- Ⓔ HOSE ASSY 04 - RR ROD END
- Ⓕ HOSE ASSY 05 - RR CAP END
- Ⓖ HOSE ASSY 04 - LR ROD END
- Ⓗ HOSE ASSY 05 - LR CAP END
- Ⓢ HOSE ASSY 04 - PRESSURE TO REMOTE
- Ⓣ NYLON TUBING 3/8" - RETURN FROM REMOTE

NOTE: INSTALLATION MUST CONFORM TO GOOD SHOP PRACTICES, SAE STANDARDS, RVIA STANDARDS, AND OTHER APPLICABLE STANDARDS.

LEVELING SYSTEM: AP59852

NO.	DATE	REVISION

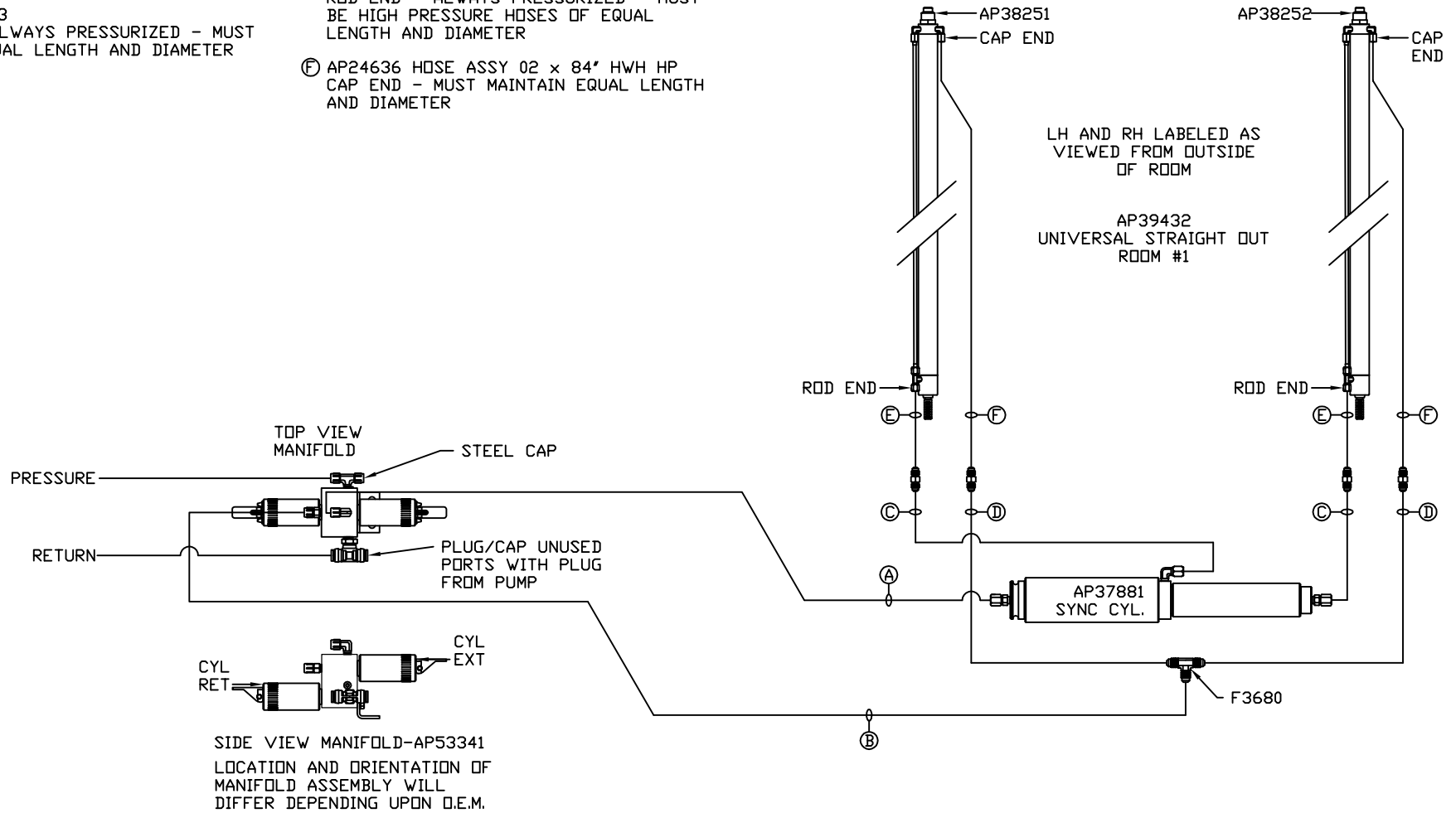
<p>HWH I-80 EXIT 267 SOUTH RT 1 MOSCOW, IDWA 52760</p>		
SCALE 1:6	DATE 14JAN19	DRAWN BY .
<p>HYD CONN DIAGRAM</p>		
<p>4-STAR TRAILER</p>		<p>DRAWING NUMBER MP71205 A/B</p>

THE INFORMATION DISCLOSED ON THIS DRAWING IS CONFIDENTIAL AND MUST NOT BE DISCLOSED OR USED IN ANY MANNER WHICH WILL BE DETRIMENTAL TO THE HWH CORPORATION

NOTE: HOSES (E) AND (F) ARE INCLUDED WITH THE ROOM EXTENSION MECHANISM

- (A) HOSE ASSY 04
ROD END - ALWAYS PRESSURIZED
- (B) HOSE ASSY 04
CAP END
- (C) HOSE ASSY 03
ROD END - ALWAYS PRESSURIZED - MUST MAINTAIN EQUAL LENGTH AND DIAMETER

- (D) HOSE ASSY 04
CAP END - MUST MAINTAIN EQUAL LENGTH AND DIAMETER
- (E) AP24632 HOSE ASSY 02 x 48' HWH HP
ROD END - ALWAYS PRESSURIZED - MUST BE HIGH PRESSURE HOSES OF EQUAL LENGTH AND DIAMETER
- (F) AP24636 HOSE ASSY 02 x 84' HWH HP
CAP END - MUST MAINTAIN EQUAL LENGTH AND DIAMETER



NOTE: INSTALLATION MUST CONFORM TO GOOD SHOP PRACTICES, SAE STANDARDS, RVIA STANDARDS, AND OTHER APPLICABLE STANDARDS.

MP71205 B/B
14 JAN 19