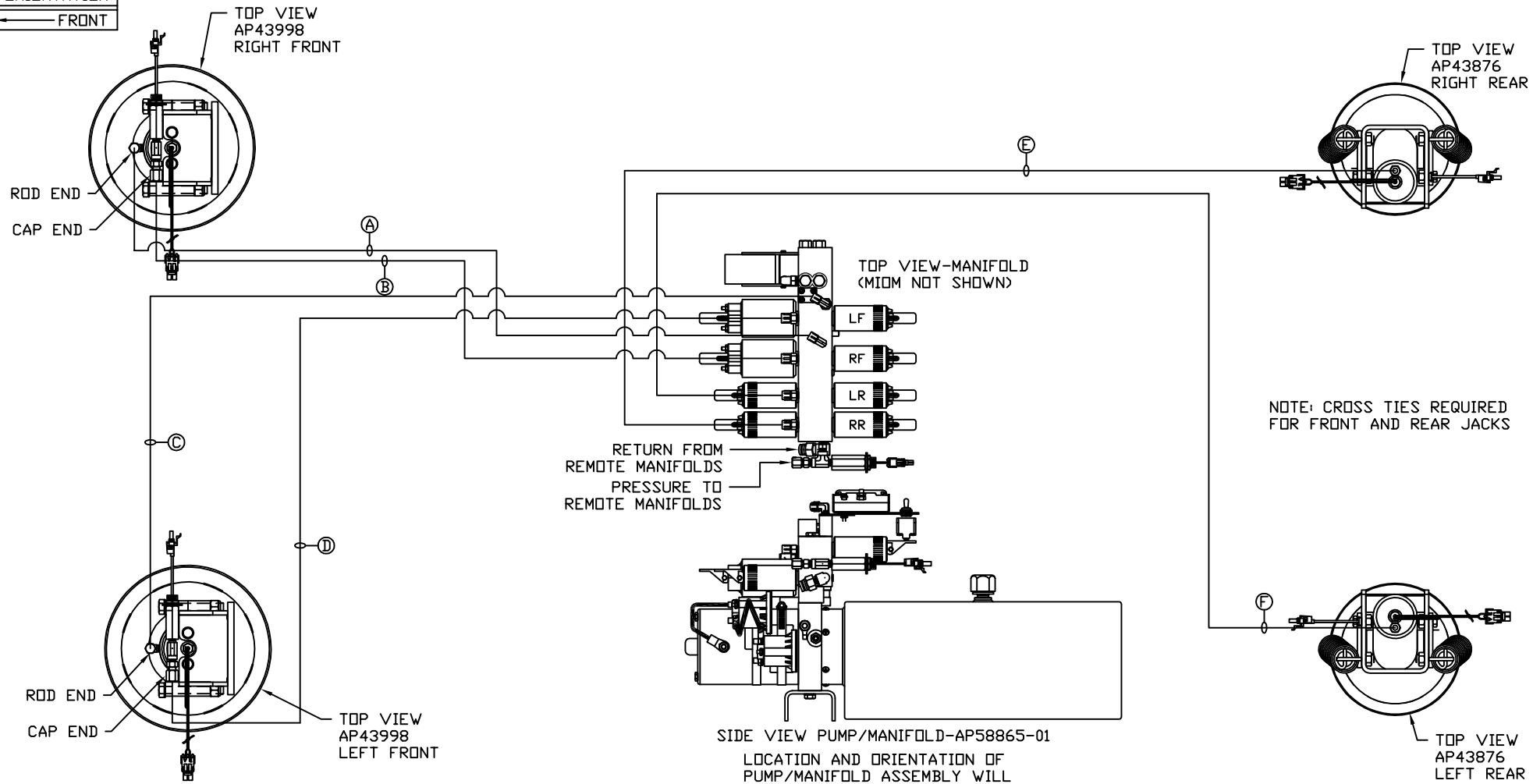


ORIENTATION
← FRONT



- Ⓐ AP4162 HOSE ASSY 04 X 192' - RF ROD END
- Ⓑ AP15833 HOSE ASSY 05 X 174' - RF CAP END
- Ⓒ AP4827 HOSE ASSY 04 X 144' - LF ROD END
- Ⓓ AP54007 HOSE ASSY 05 X 126' - LF CAP END
- Ⓔ AP29767 HOSE ASSY 04 X 600' - RR CAP END
- Ⓕ AP5925 HOSE ASSY 04 X 444' - LR CAP END

NOTE: INSTALLATION MUST CONFORM TO GOOD SHOP PRACTICES, SAE STANDARDS, RVIA STANDARDS, AND OTHER APPLICABLE STANDARDS.

LEVELING SYSTEM: AP59884

NO.	DATE	REVISION

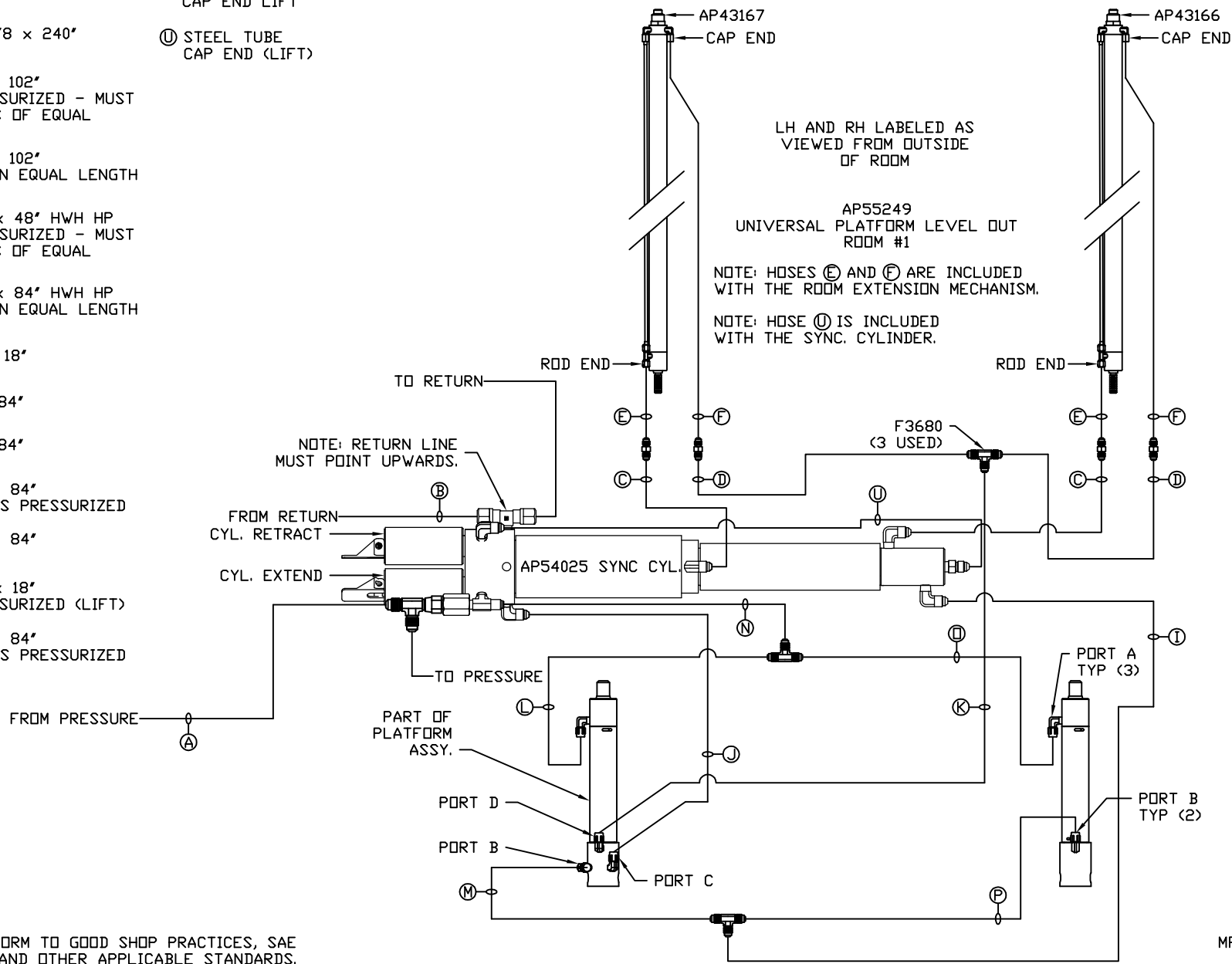
HWH			I-80 EXIT 267 SOUTH RT 1 MOSCOW, IOWA 52760		
SCALE 1:6	DATE 17JAN19	DRAWN BY .			
HYD CONN DIAGRAM					
ROLLINGSTAR				DRAWING NUMBER MP71206 A/C	

THE INFORMATION DISCLOSED ON THIS DRAWING IS CONFIDENTIAL AND MUST NOT BE DISCLOSED OR USED IN ANY MANNER WHICH WILL BE DETRIMENTAL TO THE HWH CORPORATION

- Ⓐ AP51635 HOSE ASSY 03 x 216" PRESSURE
- Ⓑ P53886 TUBING NYLON 3/8 x 240" RETURN
- Ⓒ AP50861 HOSE ASSY 03 x 102" ROD END - ALWAYS PRESSURIZED - MUST BE HIGH PRESSURE HOSES OF EQUAL LENGTH AND DIAMETER
- Ⓓ AP50861 HOSE ASSY 03 x 102" CAP END - MUST MAINTAIN EQUAL LENGTH AND DIAMETER
- Ⓔ AP24632 HOSE ASSY 02 x 48" HWH HP ROD END - ALWAYS PRESSURIZED - MUST BE HIGH PRESSURE HOSES OF EQUAL LENGTH AND DIAMETER
- Ⓕ AP24636 HOSE ASSY 02 x 84" HWH HP CAP END - MUST MAINTAIN EQUAL LENGTH AND DIAMETER
- Ⓖ AP2446 HOSE ASSY 04 x 18" CAP END (LIFT)
- Ⓙ AP1412 HOSE ASSY 04 x 84" CAP END (ROOM)
- Ⓚ AP1412 HOSE ASSY 04 x 84" CAP END (ROOM)
- Ⓛ AP50671 HOSE ASSY 03 x 84" ROD END (LIFT) - ALWAYS PRESSURIZED
- Ⓜ AP50671 HOSE ASSY 03 x 84" CAP END (LIFT)
- Ⓝ AP52043 HOSE ASSY 03 x 18" ROD END - ALWAYS PRESSURIZED (LIFT)
- Ⓟ AP50671 HOSE ASSY 03 x 84" ROD END (LIFT) - ALWAYS PRESSURIZED

- Ⓠ AP1412 HOSE ASSY 04 x 84" CAP END LIFT
- Ⓡ STEEL TUBE CAP END (LIFT)

AP59886 HOSE KIT 2RM/UPLD

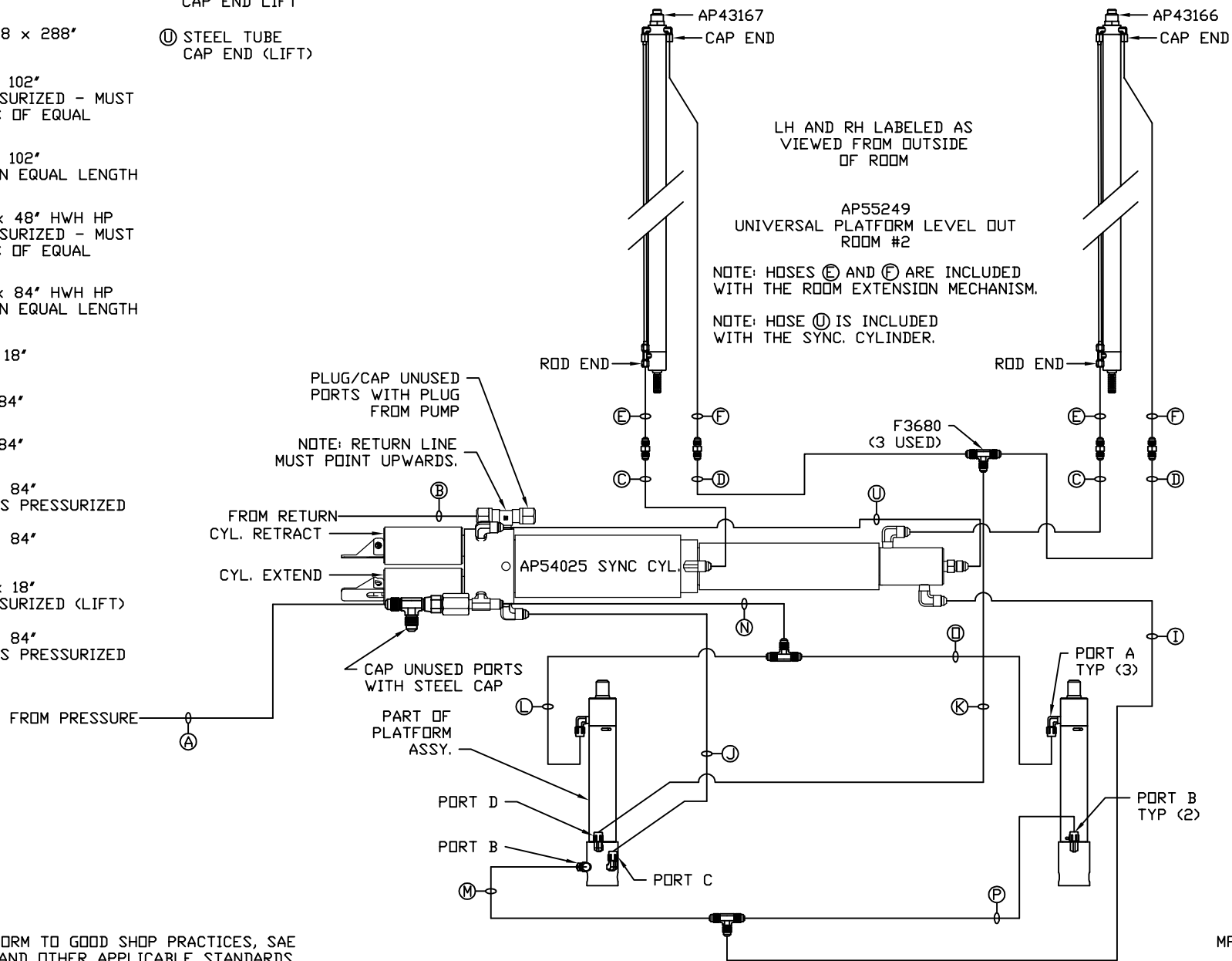


NOTE: INSTALLATION MUST CONFORM TO GOOD SHOP PRACTICES, SAE STANDARDS, RVIA STANDARDS, AND OTHER APPLICABLE STANDARDS.

MP71206 B/C
17JAN19

- Ⓐ AP49248 HOSE ASSY 03 x 288" PRESSURE
- Ⓑ P57027 TUBING NYLON 3/8 x 288" RETURN
- Ⓒ AP50861 HOSE ASSY 03 x 102" ROD END - ALWAYS PRESSURIZED - MUST BE HIGH PRESSURE HOSES OF EQUAL LENGTH AND DIAMETER
- Ⓓ AP50861 HOSE ASSY 03 x 102" CAP END - MUST MAINTAIN EQUAL LENGTH AND DIAMETER
- Ⓔ AP24632 HOSE ASSY 02 x 48" HWH HP ROD END - ALWAYS PRESSURIZED - MUST BE HIGH PRESSURE HOSES OF EQUAL LENGTH AND DIAMETER
- Ⓕ AP24636 HOSE ASSY 02 x 84" HWH HP CAP END - MUST MAINTAIN EQUAL LENGTH AND DIAMETER
- Ⓖ AP2446 HOSE ASSY 04 x 18" CAP END (LIFT)
- Ⓙ AP1412 HOSE ASSY 04 x 84" CAP END (ROOM)
- Ⓚ AP1412 HOSE ASSY 04 x 84" CAP END (ROOM)
- Ⓛ AP50671 HOSE ASSY 03 x 84" ROD END (LIFT) - ALWAYS PRESSURIZED
- Ⓜ AP50671 HOSE ASSY 03 x 84" CAP END (LIFT)
- Ⓝ AP52043 HOSE ASSY 03 x 18" ROD END - ALWAYS PRESSURIZED (LIFT)
- Ⓟ AP50671 HOSE ASSY 03 x 84" ROD END (LIFT) - ALWAYS PRESSURIZED

- Ⓟ AP1412 HOSE ASSY 04 x 84" CAP END LIFT
- Ⓡ STEEL TUBE CAP END (LIFT)



NOTE: INSTALLATION MUST CONFORM TO GOOD SHOP PRACTICES, SAE STANDARDS, RVIA STANDARDS, AND OTHER APPLICABLE STANDARDS.

MP71206 C/C
17JAN19