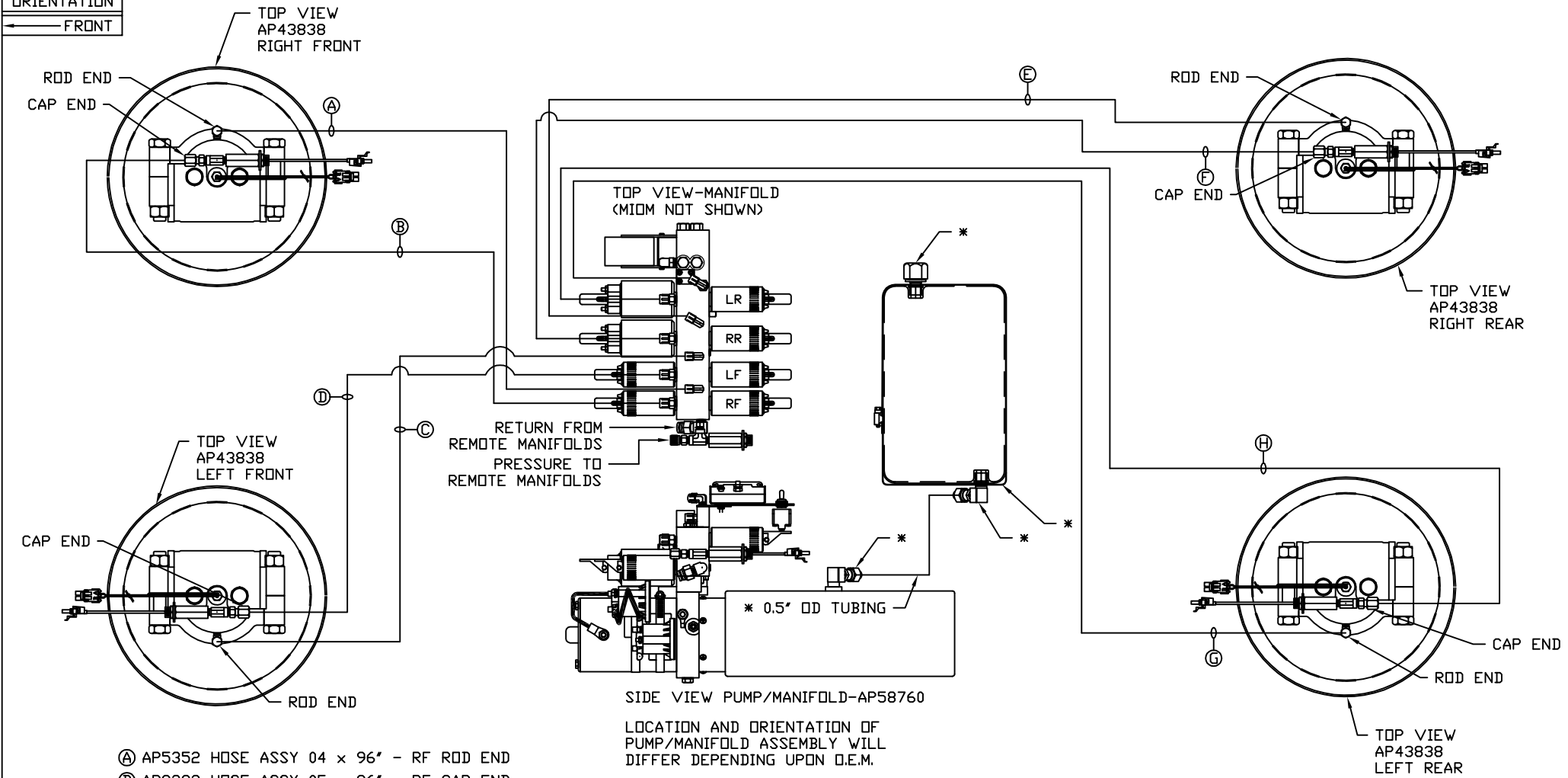


ORIENTATION  
← FRONT



- Ⓐ AP5352 HOSE ASSY 04 x 96' - RF ROD END
- Ⓑ AP8383 HOSE ASSY 05 x 96' - RF CAP END
- Ⓒ AP5352 HOSE ASSY 04 x 96' - LF ROD END
- Ⓓ AP8383 HOSE ASSY 05 x 96' - LF CAP END
- Ⓔ AP7175 HOSE ASSY 04 x 540' - RR ROD END
- Ⓕ AP7817 HOSE ASSY 05 x 540' - RR CAP END
- Ⓖ AP6388 HOSE ASSY 04 x 468' - LR ROD END
- Ⓗ AP25653 HOSE ASSY 05 x 456' - LR CAP END

\*AP45236 TANK KIT

SIDE VIEW PUMP/MANIFOLD-AP58760

LOCATION AND ORIENTATION OF PUMP/MANIFOLD ASSEMBLY WILL DIFFER DEPENDING UPON O.E.M.

NOTE: INSTALLATION MUST CONFORM TO GOOD SHOP PRACTICES, SAE STANDARDS, RVIA STANDARDS, AND OTHER APPLICABLE STANDARDS.

LEVELING SYSTEM: AP59967

NO.	DATE	REVISION

THE INFORMATION DISCLOSED ON THIS DRAWING IS CONFIDENTIAL AND MUST NOT BE DISCLOSED OR USED IN ANY MANNER WHICH WILL BE DETRIMENTAL TO THE HWH CORPORATION

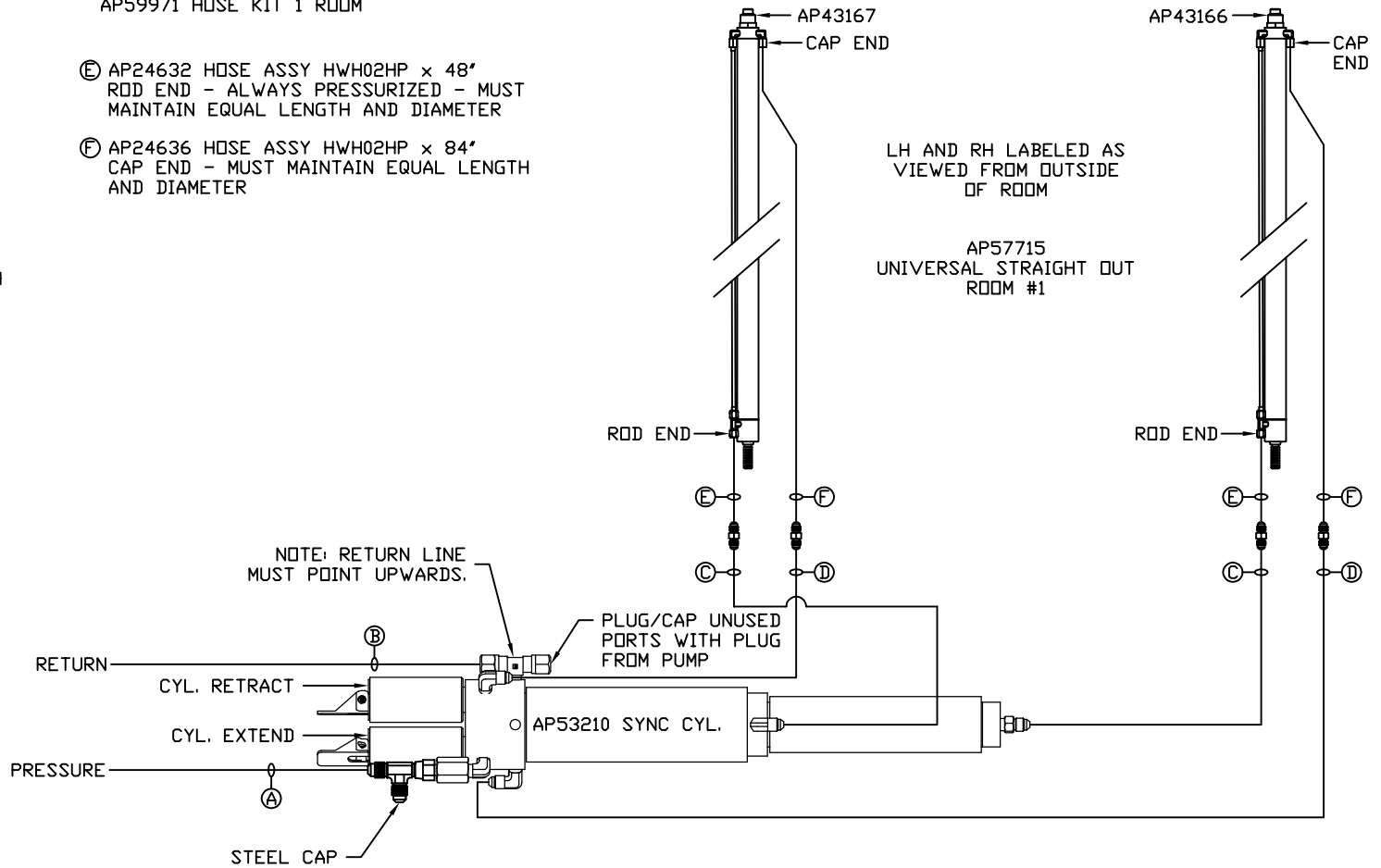
HWH			I-80 EXIT 267 SOUTH RT 1 MOSCOW, IOWA 52760		
SCALE 1:6	DATE 26FEB19	DRAWN BY .			
HYD CONN DIAGRAM					
TURNKEY				DRAWING NUMBER MP71210 A/B	

NOTE: HOSES (E) AND (F) ARE INCLUDED WITH THE ROOM EXTENSION MECHANISM

AP59971 HOSE KIT 1 ROOM

- (A) AP3314 HOSE ASSY 04 x 48' PRESSURE
- (B) P53884 TUBING NYLON 3/8 x 60' RETURN
- (C) AP51404 HOSE ASSY 03 x 150' ROD END - ALWAYS PRESSURIZED - MUST MAINTAIN EQUAL LENGTH AND DIAMETER
- (D) AP16172 HOSE ASSY 04 x 150' CAP END - MUST MAINTAIN EQUAL LENGTH AND DIAMETER

- (E) AP24632 HOSE ASSY HWH02HP x 48' ROD END - ALWAYS PRESSURIZED - MUST MAINTAIN EQUAL LENGTH AND DIAMETER
- (F) AP24636 HOSE ASSY HWH02HP x 84' CAP END - MUST MAINTAIN EQUAL LENGTH AND DIAMETER



NOTE: INSTALLATION MUST CONFORM TO GOOD SHOP PRACTICES, SAE STANDARDS, RVIA STANDARDS, AND OTHER APPLICABLE STANDARDS.

MP71210 B/B  
26FEB19