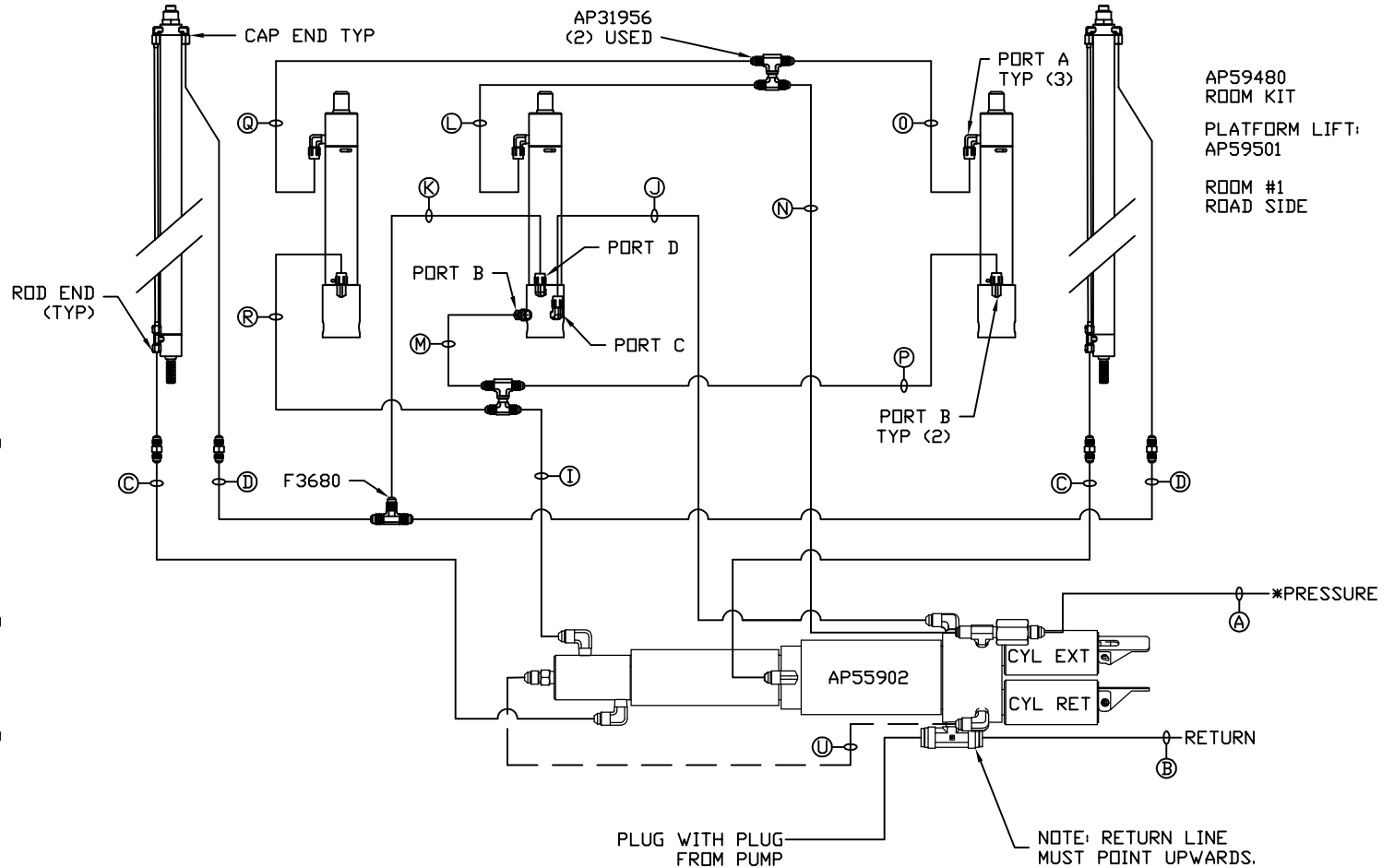


- Ⓐ AP5352 HOSE ASSY 04 x 96' PRESSURE
- Ⓑ .375" OD NYLON TUBING RETURN
- Ⓒ AP51638 HOSE ASSY 03 x 300' ROD END - ALWAYS PRESSURIZED HOSES MUST BE HIGH PRESSURE AND OF EQUAL LENGTH AND DIAMETER
- Ⓓ AP6116 HOSE ASSY 04 x 240' CAP END - HOSES MUST MAINTAIN EQUAL LENGTH AND DIAMETER
- Ⓔ AP4073 HOSE ASSY 04 x 6 0' CAP END (LIFT)
- Ⓝ AP13844 HOSE ASSY 03 x 78' CAP END (ROOM)
- Ⓚ AP50907 HOSE ASSY 03 x 48' CAP END (ROOM)
- Ⓛ AP52163 HOSE ASSY 03 x 42' ROD END (LIFT) ALWAYS PRESSURIZED
- Ⓜ AP52163 HOSE ASSY 03 x 42' CAP END (LIFT)
- Ⓝ AP3314 HOSE ASSY 04 x 48' ROD END (LIFT) ALWAYS PRESSURIZED
- Ⓟ AP49439 HOSE ASSY 03 x 132' ROD END (LIFT) ALWAYS PRESSURIZED
- Ⓟ AP53975 HOSE ASSY 03 x 126' CAP END (LIFT)
- Ⓠ AP49246 HOSE ASSY 03 x 156' ROD END (LIFT) ALWAYS PRESSURIZED
- Ⓡ AP50779 HOSE ASSY 03 x 144' CAP END (LIFT)



AP59480  
ROOM KIT  
PLATFORM LIFT:  
AP59501  
ROOM #1  
ROAD SIDE

NOTES:

FOR CONNECTION CLARITY ONLY THE CYLINDERS ARE SHOWN.

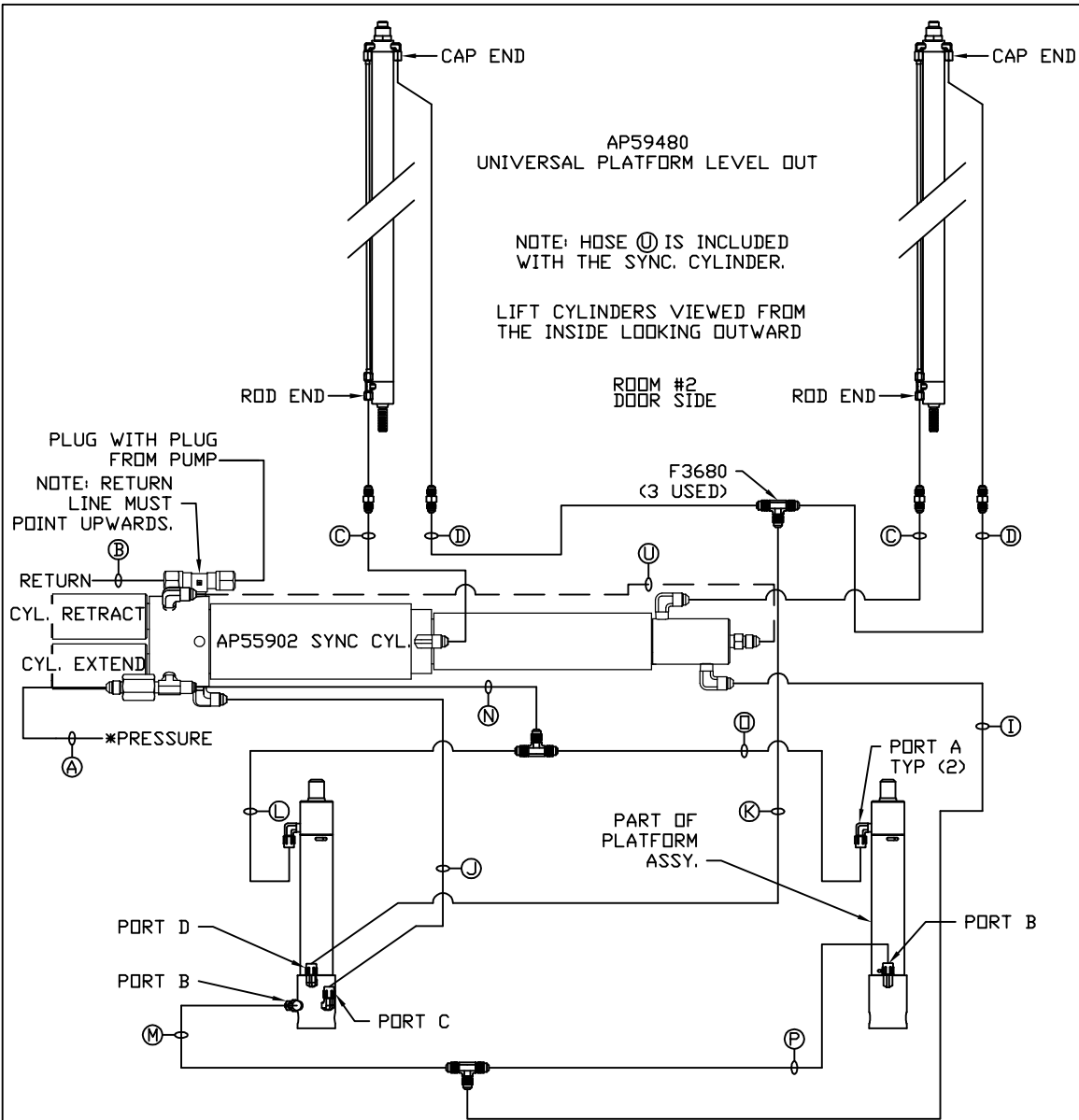
HOSE Ⓧ IS INCLUDED WITH THE SYNC. CYLINDER.

LIFT CYLINDERS VIEWED FROM THE INSIDE  
LOOKING OUTWARD

\*NOTE: ISOLATED PRESSURE IF AVAILABLE, SEE LEVELING SYSTEM DIAGRAM

		HWH I-80 EXIT 267 SOUTH RT 1 MOSCOW, IOWA 52760	
		SCALE 1:6	DATE 14NOV19
		DRAWN BY .	
		HYD CONN DIAGRAM	
NO.	DATE	REVISION	
		THE INFORMATION DISCLOSED ON THIS DRAWING IS CONFIDENTIAL AND MUST NOT BE DISCLOSED OR USED IN ANY MANNER WHICH WILL BE DETRIMENTAL TO THE HWH CORPORATION	
		REV GROUP	DRAWING NUMBER MP71221 A/B

NOTE: INSTALLATION MUST CONFORM TO GOOD SHOP PRACTICES, SAE STANDARDS, RVIA STANDARDS, AND OTHER APPLICABLE STANDARDS.



AP59480  
UNIVERSAL PLATFORM LEVEL OUT

NOTE: HOSE (U) IS INCLUDED  
WITH THE SYNC. CYLINDER.

LIFT CYLINDERS VIEWED FROM  
THE INSIDE LOOKING OUTWARD

ROOM #2  
DOOR SIDE

F3680  
(3 USED)

PLUG WITH PLUG  
FROM PUMP  
NOTE: RETURN  
LINE MUST  
POINT UPWARDS.

RETURN  
CYL. RETRACT  
CYL. EXTEND

\*PRESSURE

PART OF  
PLATFORM  
ASSY.

PORT A  
TYP (2)

PORT D  
PORT B

PORT C

PORT B

- (A) AP53964 HOSE ASSY 04 x 114" PRESSURE
- (B) .375" OD NYLON TUBING RETURN
- (C) AP49438 HOSE ASSY 03 x 192" ROD END - ALWAYS PRESSURIZED - MUST BE HIGH PRESSURE HOSES OF EQUAL LENGTH AND DIAMETER
- (D) AP4906 HOSE ASSY 04 x 126" CAP END - MUST MAINTAIN EQUAL LENGTH AND DIAMETER
- (E) AP3314 HOSE ASSY 04 x 48" CAP END (LIFT)
- (J) AP49244 HOSE ASSY 03 x 108" CAP END (ROOM)
- (K) AP52163 HOSE ASSY 03 x 42" CAP END (ROOM)
- (L) AP50909 HOSE ASSY 03 x 72" ROD END (LIFT) - ALWAYS PRESSURIZED
- (M) AP50909 HOSE ASSY 03 x 72" CAP END (LIFT)
- (N) AP3314 HOSE ASSY 04 x 48" ROD END - ALWAYS PRESSURIZED (LIFT)
- (O) AP13844 HOSE ASSY 03 x 78" ROD END (LIFT) - ALWAYS PRESSURIZED
- (P) AP50909 HOSE ASSY 03 x 72" CAP END LIFT
- (U) STEEL TUBE CAP END (LIFT)

PLATFORM LIFT:  
AP59504

\*NOTE: ISOLATED PRESSURE IF AVAILABLE, SEE LEVELING SYSTEM DIAGRAM

NOTE: INSTALLATION MUST CONFORM TO GOOD SHOP PRACTICES, SAE STANDARDS, RVIA STANDARDS, AND OTHER APPLICABLE STANDARDS.

MP71221 B/B  
14NOV19