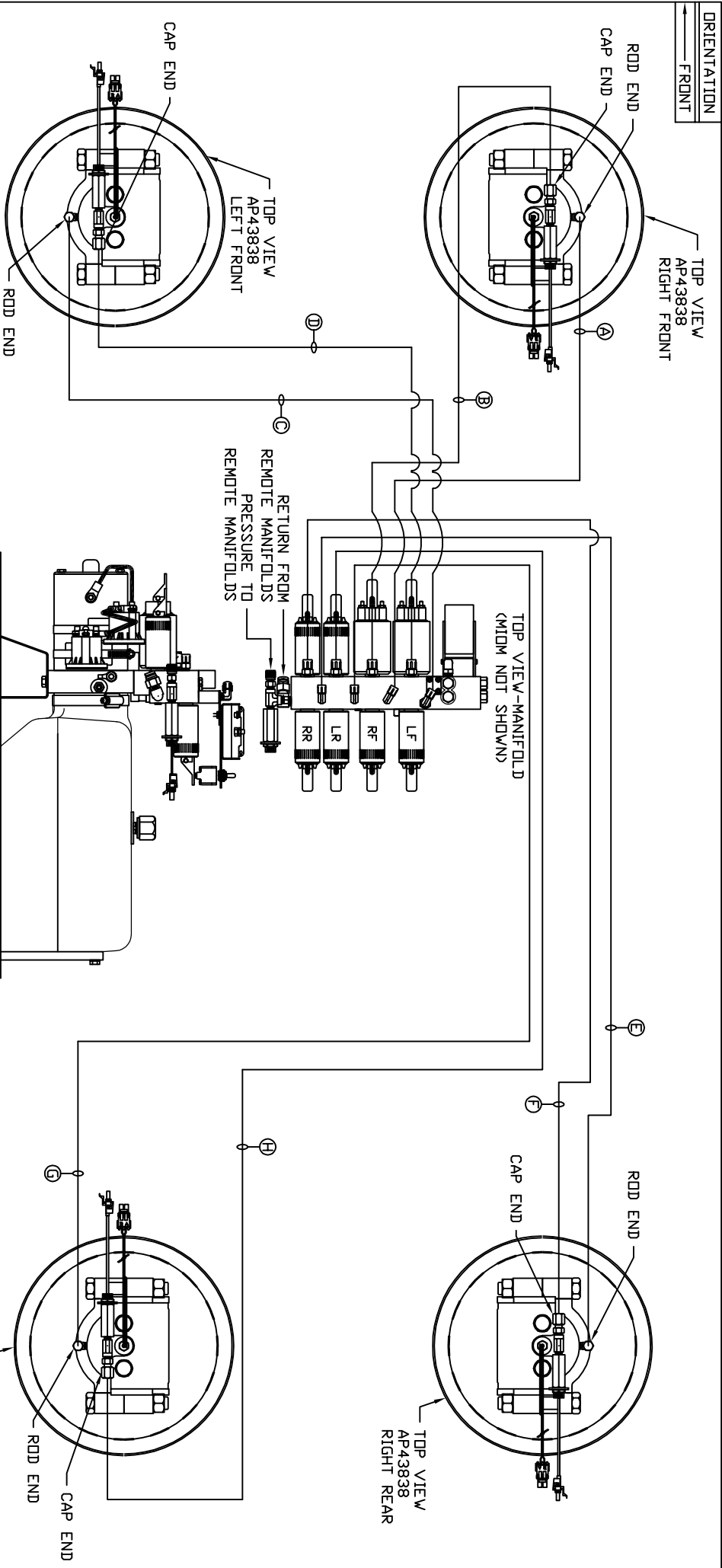


ORIENTATION
FRONT



- Ⓐ AP7385 HOSE ASSY 04 x 252' - RF RDD END
- Ⓑ AP42093 HOSE ASSY 05 x 276' - RF CAP END
- Ⓒ AP5561 HOSE ASSY 04 x 336' - LF RDD END
- Ⓓ AP8381 HOSE ASSY 05 x 360' - LF CAP END
- Ⓔ AP5352 HOSE ASSY 04 x 96' - RR RDD END
- Ⓕ AP42054 HOSE ASSY 05 x 108' - RR CAP END
- Ⓖ AP4159 HOSE ASSY 04 x 72' - LR RDD END
- Ⓗ AP42051 HOSE ASSY 05 x 84' - LR CAP END

SIDE VIEW PUMP/MANIFOLD-AP59086
LOCATION AND ORIENTATION OF PUMP/MANIFOLD ASSEMBLY WILL DIFFER DEPENDING UPON D.E.M.

NOTE: INSTALLATION MUST CONFORM TO GOOD SHOP PRACTICES, SAE STANDARDS, RVIA STANDARDS, AND OTHER APPLICABLE STANDARDS.

LEVELING SYSTEM: AP60312

THE INFORMATION DISCLOSED ON THIS DRAWING IS CONFIDENTIAL AND MUST NOT BE DISCLOSED OR USED IN ANY MANNER WHICH WILL BE DETRIMENTAL TO THE HWH CORPORATION

NO.	DATE	REVISION

SCALE 1:6 DATE 16MAY16 DRAWN BY .

HWH 1-80 EXIT 267 SOUTH
RT 1 MOSCOW, IOWA 52760

HYD CONN DIAGRAM

LDS SYSTEMS DRAWING NUMBER MP71235