

THIS PAGE INTENTIONALLY LEFT BLANK

			HWH I-80 EXIT 267 SOUTH RT 1 MOSCOW, IOWA 52760		
			SCALE 1:6	DATE 20AUG19	DRAWN BY .
			HYD CONN DIAGRAM		
			THE INFORMATION DISCLOSED ON THIS DRAWING IS CONFIDENTIAL AND MUST NOT BE DISCLOSED OR USED IN ANY MANNER WHICH WILL BE DETRIMENTAL TO THE HWH CORPORATION		DRAWING NUMBER MP71237 A/C

NOTE: INSTALLATION MUST CONFORM TO GOOD SHOP PRACTICES, SAE STANDARDS, RVIA STANDARDS, AND OTHER APPLICABLE STANDARDS.

- (A) AP4073 HOSE ASSY 04 x 60' PRESSURE
- (B) P5145 .375" OD NYLON TUBING RETURN
- (C) AP50779 HOSE ASSY 03 x 144' ROD END - ALWAYS PRESSURIZED - MUST MAINTAIN EQUAL LENGTH AND DIAMETER
- (D) AP1412 HOSE ASSY 04 x 84' CAP END - MUST MAINTAIN EQUAL LENGTH AND DIAMETER
- (E) AP50907 HOSE ASSY 03 x 48' ROD END - ALWAYS PRESSURIZED - MUST MAINTAIN EQUAL LENGTH AND DIAMETER
- (F) AP50671 HOSE ASSY 03 x 84' CAP END - MUST MAINTAIN EQUAL LENGTH AND DIAMETER
- (I) AP5352 HOSE ASSY 04 x 96' CAP END (LIFT)
- (J) AP50766 HOSE ASSY 03 x 96' CAP END (ROOM)

- (K) AP49243 HOSE ASSY 03 x 60' CAP END (ROOM)
- (L) AP50779 HOSE ASSY 03 x 144' ROD END (LIFT) ALWAYS PRESSURIZED
- (M) AP50779 HOSE ASSY 03 x 144' CAP END (LIFT)
- (N) AP5352 HOSE ASSY 04 x 96' ROD END - ALWAYS PRESSURIZED (LIFT)
- (O) AP50779 HOSE ASSY 03 x 144' ROD END (LIFT) ALWAYS PRESSURIZED
- (P) AP50779 HOSE ASSY 03 x 144' CAP END LIFT
- (Q) AP50779 HOSE ASSY 03 x 144' ROD END (LIFT) ALWAYS PRESSURIZED
- (R) AP50779 HOSE ASSY 03 x 144' CAP END LIFT

AP60274 HOSE KIT 2RM/UPLD

AP43167
CAP END

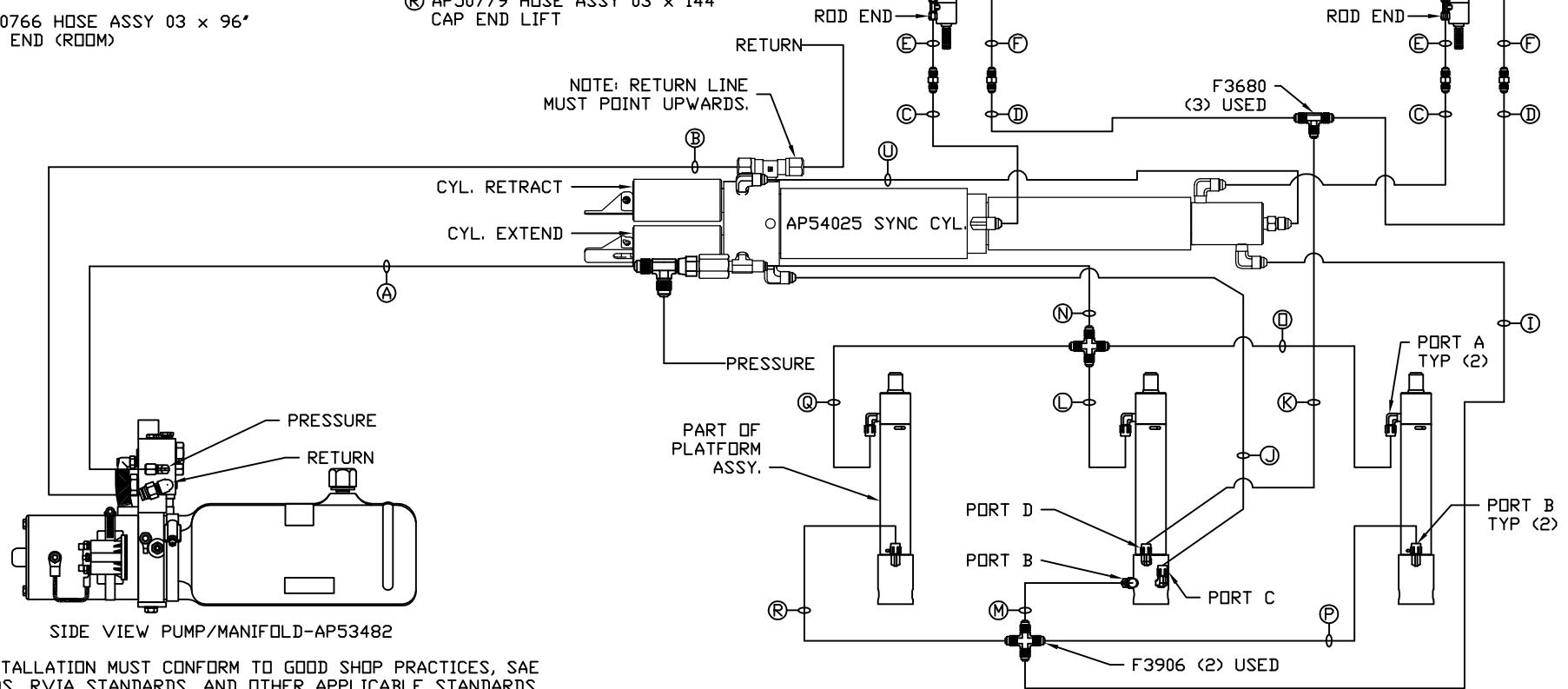
AP43166
CAP END

LH AND RH LABELED AS VIEWED FROM OUTSIDE OF ROOM

AP55249
UNIVERSAL PLATFORM LEVEL OUT ROOM #1

NOTE: HOSES (E) AND (F) ARE INCLUDED WITH THE ROOM EXTENSION MECHANISM.

NOTE: HOSE (I) IS INCLUDED WITH THE SYNC. CYLINDER.



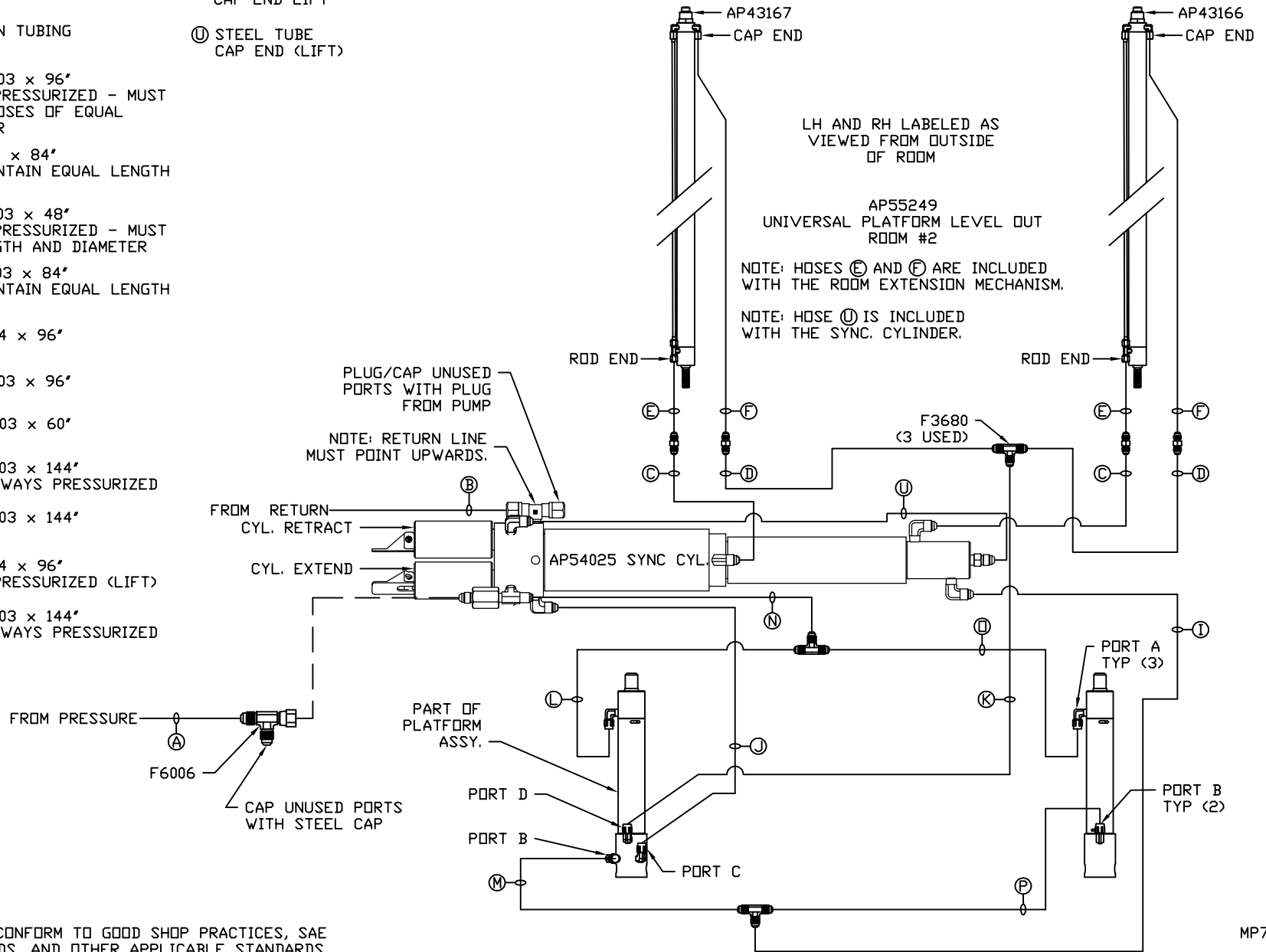
SIDE VIEW PUMP/MANIFOLD-AP53482

NOTE: INSTALLATION MUST CONFORM TO GOOD SHOP PRACTICES, SAE STANDARDS, RVIA STANDARDS, AND OTHER APPLICABLE STANDARDS.

MP71237 B/C
20AUG19

- Ⓐ AP4161 HOSE ASSY 04 x 120" PRESSURE
- Ⓑ P5145 .375" OD NYLON TUBING RETURN
- Ⓒ AP50766 HOSE ASSY 03 x 96" ROD END - ALWAYS PRESSURIZED - MUST BE HIGH PRESSURE HOSES OF EQUAL LENGTH AND DIAMETER
- Ⓓ AP1412 HOSE ASSY 04 x 84" CAP END - MUST MAINTAIN EQUAL LENGTH AND DIAMETER
- Ⓔ AP50907 HOSE ASSY 03 x 48" ROD END - ALWAYS PRESSURIZED - MUST MAINTAIN EQUAL LENGTH AND DIAMETER
- Ⓕ AP50671 HOSE ASSY 03 x 84" CAP END - MUST MAINTAIN EQUAL LENGTH AND DIAMETER
- Ⓖ AP5392 HOSE ASSY 04 x 96" CAP END (LIFT)
- Ⓙ AP50766 HOSE ASSY 03 x 96" CAP END (ROOM)
- Ⓚ AP49243 HOSE ASSY 03 x 60" CAP END (ROOM)
- Ⓛ AP50779 HOSE ASSY 03 x 144" ROD END (LIFT) - ALWAYS PRESSURIZED
- Ⓜ AP50779 HOSE ASSY 03 x 144" CAP END (LIFT)
- Ⓝ AP5392 HOSE ASSY 04 x 96" ROD END - ALWAYS PRESSURIZED (LIFT)
- Ⓟ AP50779 HOSE ASSY 03 x 144" ROD END (LIFT) - ALWAYS PRESSURIZED

- Ⓟ AP50779 HOSE ASSY 03 x 144" CAP END LIFT
- Ⓡ STEEL TUBE CAP END (LIFT)



NOTE: INSTALLATION MUST CONFORM TO GOOD SHOP PRACTICES, SAE STANDARDS, RVIA STANDARDS, AND OTHER APPLICABLE STANDARDS.

MP71237 C/C
20AUG19