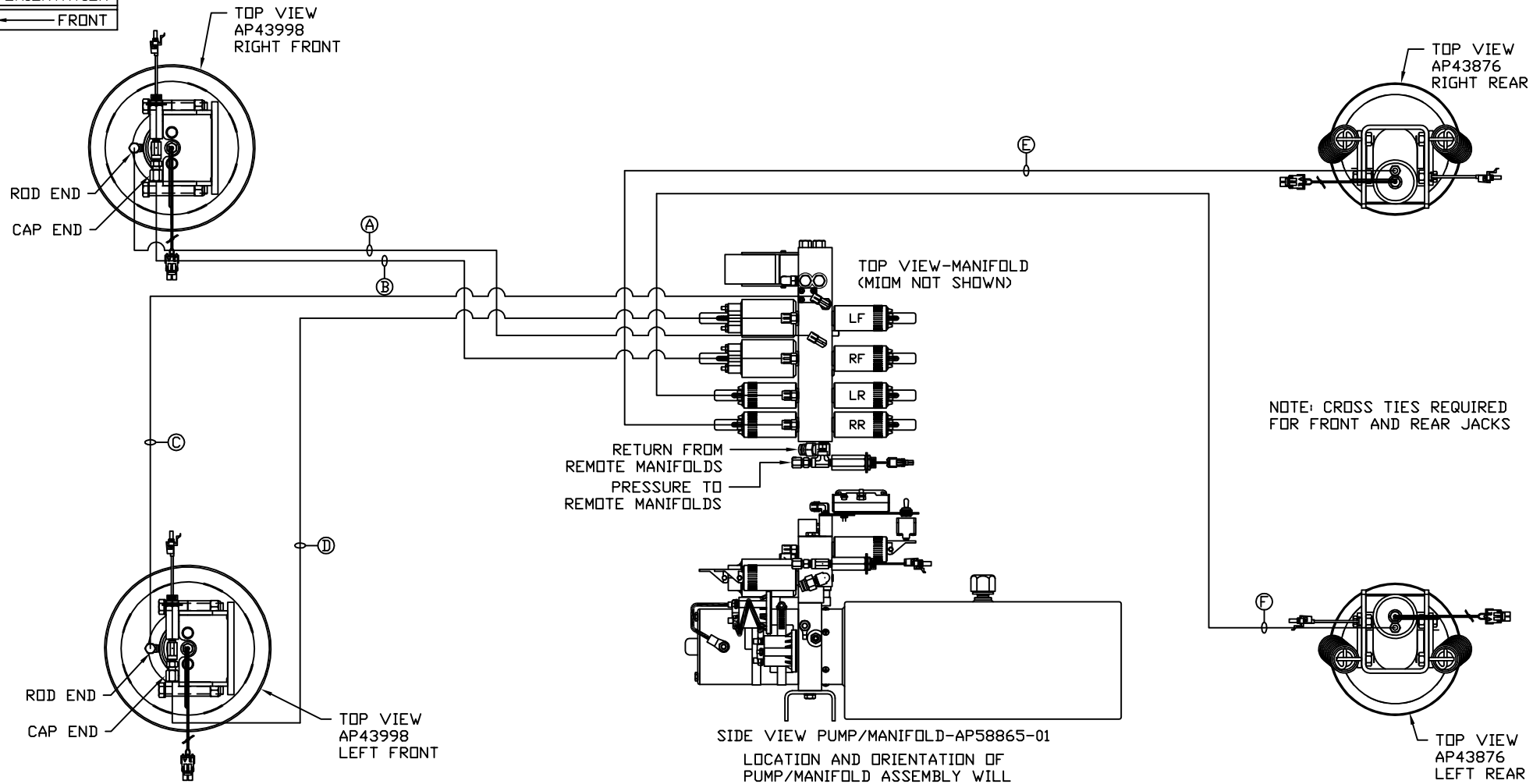


ORIENTATION
← FRONT



- Ⓐ AP4162 HOSE ASSY 04 X 192' - RF ROD END
- Ⓑ AP15833 HOSE ASSY 05 X 174' - RF CAP END
- Ⓒ AP4827 HOSE ASSY 04 X 144' - LF ROD END
- Ⓓ AP54007 HOSE ASSY 05 X 126' - LF CAP END
- Ⓔ AP6217 HOSE ASSY 04 X 456' - RR CAP END
- Ⓕ AP4163 HOSE ASSY 04 X 360' - LR CAP END

SIDE VIEW PUMP/MANIFOLD-AP58865-01
LOCATION AND ORIENTATION OF PUMP/MANIFOLD ASSEMBLY WILL DIFFER DEPENDING UPON O.E.M.

NOTE: INSTALLATION MUST CONFORM TO GOOD SHOP PRACTICES, SAE STANDARDS, RVIA STANDARDS, AND OTHER APPLICABLE STANDARDS.

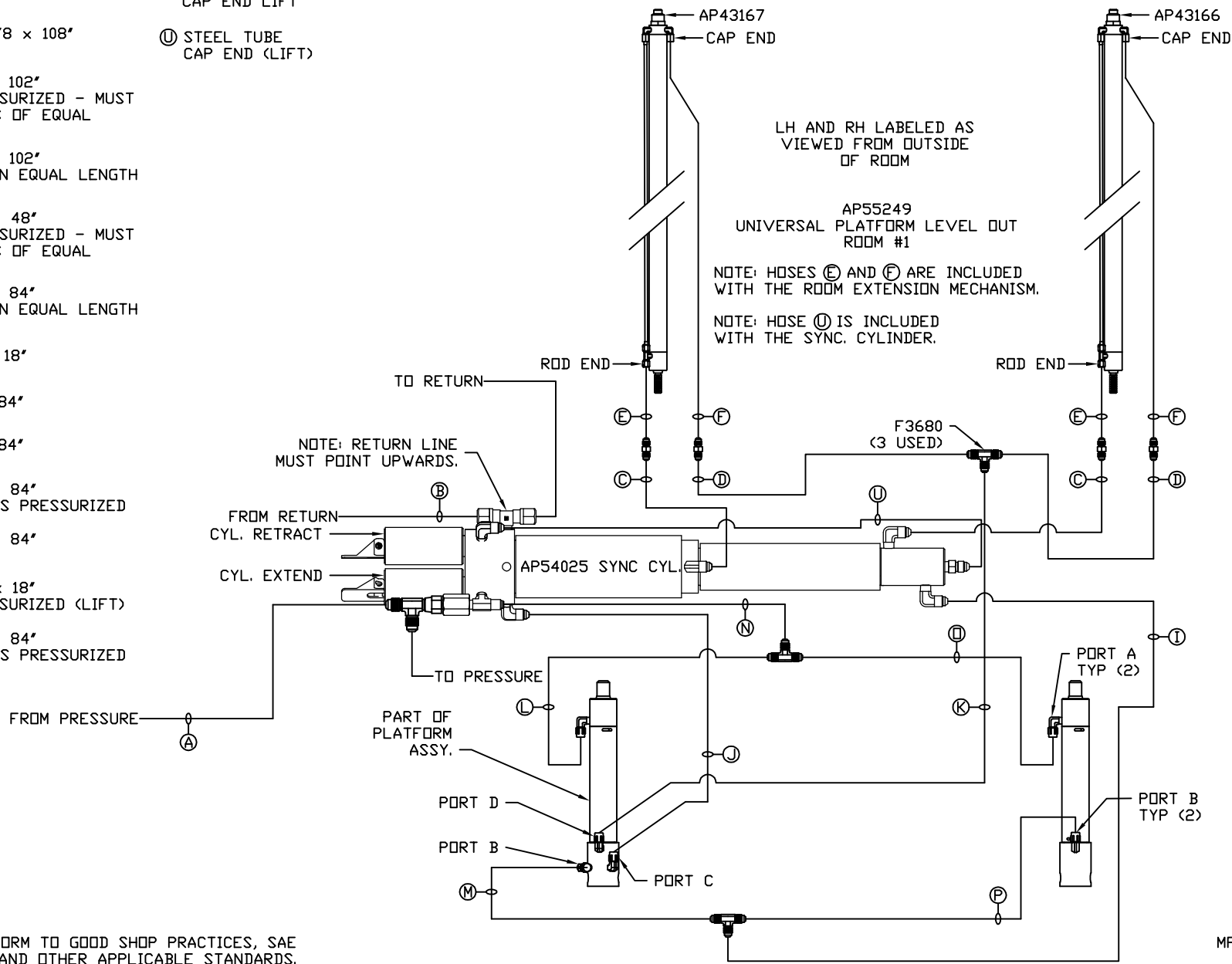
LEVELING SYSTEM: AP60593

		HWH I-80 EXIT 267 SOUTH RT 1 MOSCOW, IOWA 52760	
		SCALE 1:6	DATE 09OCT19
		DRAWN BY .	
HYD CONN DIAGRAM			
NO.	DATE	REVISION	
THE INFORMATION DISCLOSED ON THIS DRAWING IS CONFIDENTIAL AND MUST NOT BE DISCLOSED OR USED IN ANY MANNER WHICH WILL BE DETRIMENTAL TO THE HWH CORPORATION			
ROLLINGSTAR			DRAWING NUMBER MP71243 A/C

- (A) AP50861 HOSE ASSY 03 x 102" PRESSURE
- (B) P53885 TUBING NYLON 3/8 x 108" RETURN
- (C) AP50861 HOSE ASSY 03 x 102" ROD END - ALWAYS PRESSURIZED - MUST BE HIGH PRESSURE HOSES OF EQUAL LENGTH AND DIAMETER
- (D) AP50861 HOSE ASSY 03 x 102" CAP END - MUST MAINTAIN EQUAL LENGTH AND DIAMETER
- (E) AP50907 HOSE ASSY 03 x 48" ROD END - ALWAYS PRESSURIZED - MUST BE HIGH PRESSURE HOSES OF EQUAL LENGTH AND DIAMETER
- (F) AP50671 HOSE ASSY 03 x 84" CAP END - MUST MAINTAIN EQUAL LENGTH AND DIAMETER
- (I) AP2446 HOSE ASSY 04 x 18" CAP END (LIFT)
- (J) AP1412 HOSE ASSY 04 x 84" CAP END (ROOM)
- (K) AP1412 HOSE ASSY 04 x 84" CAP END (ROOM)
- (L) AP50671 HOSE ASSY 03 x 84" ROD END (LIFT) - ALWAYS PRESSURIZED
- (M) AP50671 HOSE ASSY 03 x 84" CAP END (LIFT)
- (N) AP52043 HOSE ASSY 03 x 18" ROD END - ALWAYS PRESSURIZED (LIFT)
- (O) AP50671 HOSE ASSY 03 x 84" ROD END (LIFT) - ALWAYS PRESSURIZED

- (P) AP1412 HOSE ASSY 04 x 84" CAP END LIFT
- (U) STEEL TUBE CAP END (LIFT)

AP60596 HOSE KIT 2RM/UPLD

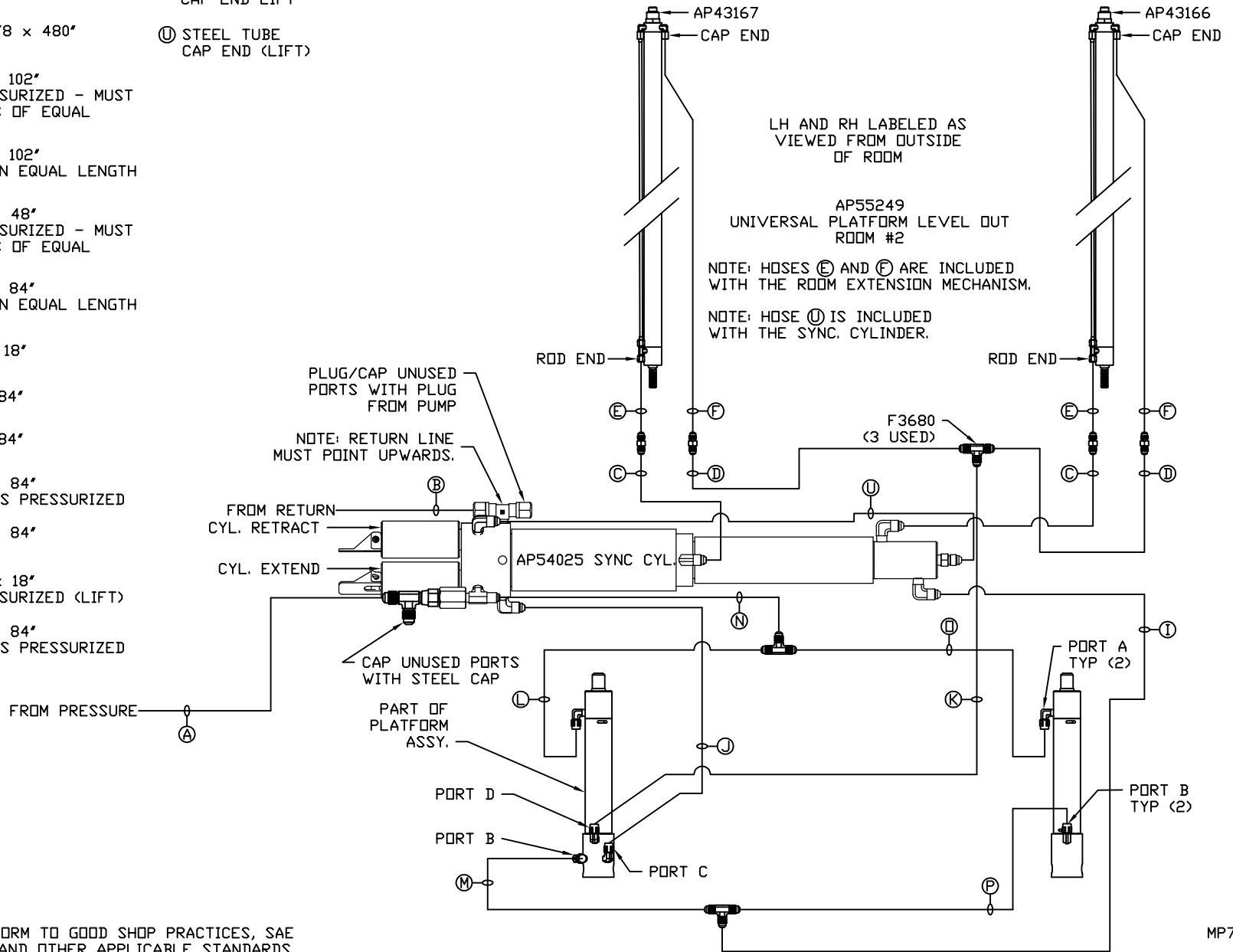


NOTE: INSTALLATION MUST CONFORM TO GOOD SHOP PRACTICES, SAE STANDARDS, RVIA STANDARDS, AND OTHER APPLICABLE STANDARDS.

MP71243 B/C
09QCT19

- (A) AP53032 HOSE ASSY 03 x 420" PRESSURE
- (B) P29287 TUBING NYLON 3/8 x 480" RETURN
- (C) AP50861 HOSE ASSY 03 x 102" ROD END - ALWAYS PRESSURIZED - MUST BE HIGH PRESSURE HOSES OF EQUAL LENGTH AND DIAMETER
- (D) AP50861 HOSE ASSY 03 x 102" CAP END - MUST MAINTAIN EQUAL LENGTH AND DIAMETER
- (E) AP50907 HOSE ASSY 03 x 48" ROD END - ALWAYS PRESSURIZED - MUST BE HIGH PRESSURE HOSES OF EQUAL LENGTH AND DIAMETER
- (F) AP50671 HOSE ASSY 03 x 84" CAP END - MUST MAINTAIN EQUAL LENGTH AND DIAMETER
- (I) AP2446 HOSE ASSY 04 x 18" CAP END (LIFT)
- (J) AP1412 HOSE ASSY 04 x 84" CAP END (ROOM)
- (K) AP1412 HOSE ASSY 04 x 84" CAP END (ROOM)
- (L) AP50671 HOSE ASSY 03 x 84" ROD END (LIFT) - ALWAYS PRESSURIZED
- (M) AP50671 HOSE ASSY 03 x 84" CAP END (LIFT)
- (N) AP52043 HOSE ASSY 03 x 18" ROD END - ALWAYS PRESSURIZED (LIFT)
- (O) AP50671 HOSE ASSY 03 x 84" ROD END (LIFT) - ALWAYS PRESSURIZED

- (P) AP1412 HOSE ASSY 04 x 84" CAP END LIFT
- (U) STEEL TUBE CAP END (LIFT)



NOTE: INSTALLATION MUST CONFORM TO GOOD SHOP PRACTICES, SAE STANDARDS, RVIA STANDARDS, AND OTHER APPLICABLE STANDARDS.

MP71243 C/C
09QCT19