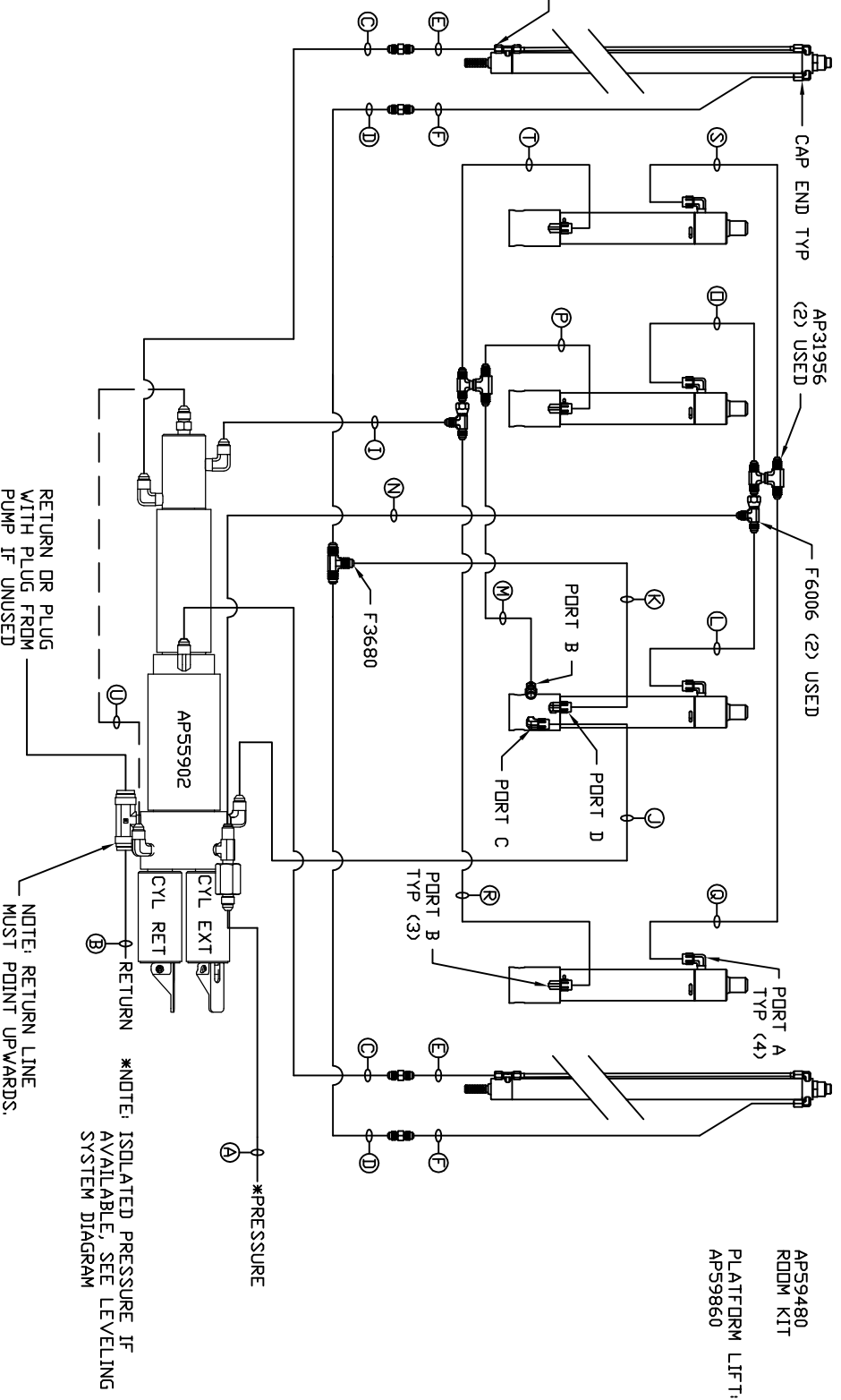


- Ⓐ AP4310 HOSE ASSY 04 x 204' PRESSURE
- Ⓑ .375" OD NYLON TUBING RETURN
- Ⓒ AP51638 HOSE ASSY 03 x 300' RDD END - ALWAYS PRESSURIZED HOSES MUST BE HIGH PRESSURE AND OF EQUAL LENGTH AND DIAMETER
- Ⓓ AP4162 HOSE ASSY 04 x 192' CAP END - HOSES MUST MAINTAIN EQUAL LENGTH AND DIAMETER
- Ⓣ AP2445 HOSE ASSY 04 x 90' CAP END (LIFT)
- Ⓛ AP50766 HOSE ASSY 03 x 96' CAP END (ROOM)
- Ⓚ AP51480 HOSE ASSY 03 x 66' CAP END (ROOM)
- Ⓛ AP50908 HOSE ASSY 03 x 54' RDD END (LIFT) ALWAYS PRESSURIZED
- Ⓜ AP50908 HOSE ASSY 03 x 54' CAP END (LIFT)
- Ⓝ AP53964 HOSE ASSY 04 x 114' RDD END (LIFT) ALWAYS PRESSURIZED
- Ⓓ AP50908 HOSE ASSY 03 x 54' RDD END (LIFT) ALWAYS PRESSURIZED
- Ⓟ AP50908 HOSE ASSY 03 x 54' CAP END (LIFT)
- Ⓠ AP50779 HOSE ASSY 03 x 144' RDD END (LIFT) ALWAYS PRESSURIZED
- Ⓡ AP50779 HOSE ASSY 03 x 144' CAP END (LIFT)
- Ⓣ AP50779 HOSE ASSY 03 x 144' CAP END (LIFT)

NOTES:

FOR CONNECTION CLARITY ONLY THE CYLINDERS ARE SHOWN.

HOSE Ⓣ IS INCLUDED WITH THE SYNC. CYLINDER.
LIFT CYLINDERS VIEWED FROM THE INSIDE
LOOKING OUTWARD



NOTE: INSTALLATION MUST CONFORM TO GOOD SHOP PRACTICES, SAE STANDARDS, RYIA STANDARDS, AND OTHER APPLICABLE STANDARDS.

NO.		DATE		REVISION	
HWH		16DEC19		HYD CONN DIAGRAM	
1-80 EXIT 267 SOUTH		RT 1 MOSCOW, IDWA 52760		DRAWING NUMBER	
REV		GROUP		MP71246	